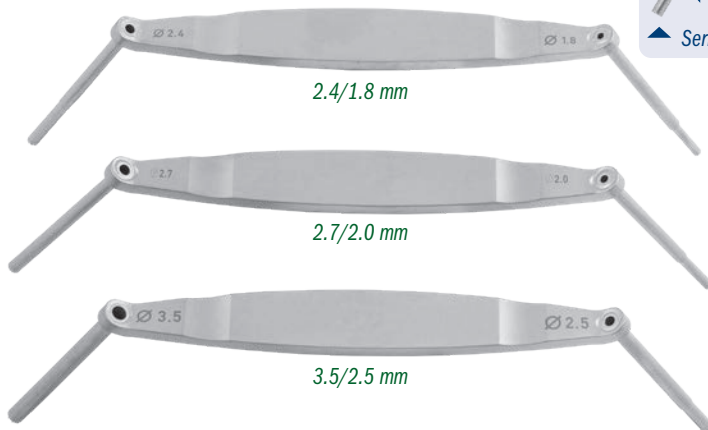
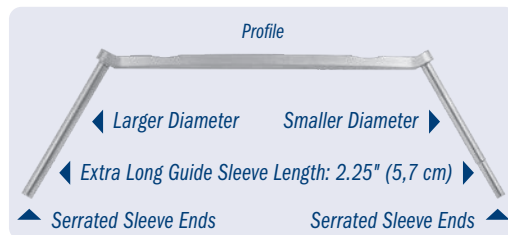





## Modified Extended Drill Sleeves

Designed by Reza Firoozabadi, MD

Designed to help reduce fractures when k-wires are passed through, the extra long long drill sleeve helps to protect soft tissues and prevent the need for stacking two drill sleeves



- ▶ Serrated tips allow for better grip when drilling at an angle or when pushing a fracture fragment to assist with fracture reduction
- ▶ Sleeve can be used as a reduction aid with placement of a kirschner wire through sleeve
- ▶ Collaborated tips which allow placement of appropriate size drills for lagging by technique – as an example a 2.5 end will fit into a 3.5 drill hole

| PRODUCT NO'S:  |  |   |
|--|--|--|
| 3014-00 [Set of Three]   |  |  |
| <b>Set Includes/ Available Separately:</b>   |  |  |
| 3014-01 [2.4/1.8 mm]<br>Overall Length: 6.875" (17,6 cm)<br>Handle Length: 4.875" (12,4 cm)<br>Guide Tube Length: 2.25" (5,7 cm)<br>Guide Angle from Handle: 30° | 3014-02 [2.7/2.0 mm]<br>Overall Length: 6.875" (17,6 cm)<br>Handle Length: 4.875" (12,4 cm)<br>Guide Tube Length: 2.25" (5,7 cm)<br>Guide Angle from Handle: 30° | 3014-03 [3.5/2.5 mm]<br>Overall Length: 6.875" (17,6 cm)<br>Handle Length: 4.875" (12,4 cm)<br>Guide Tube Length: 2.25" (5,7 cm)<br>Guide Angle from Handle: 30° |

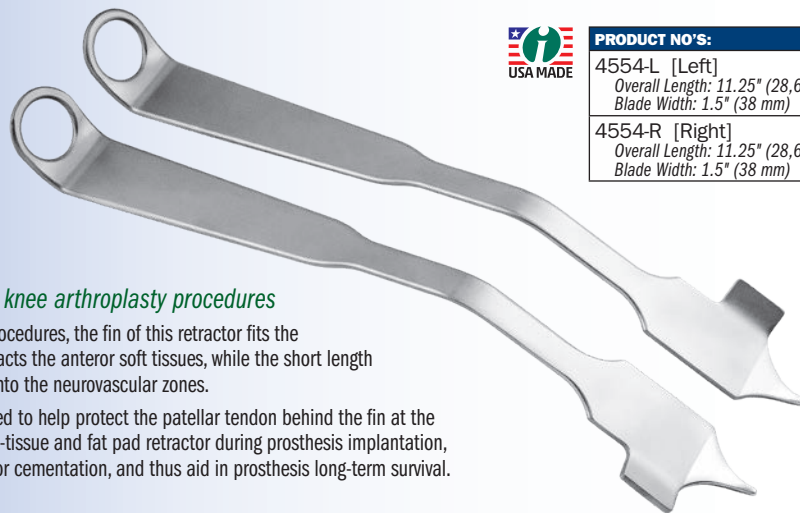
## Multi-Purpose Hip & Knee Retractors

Designed by Vasilios Mathews, MD

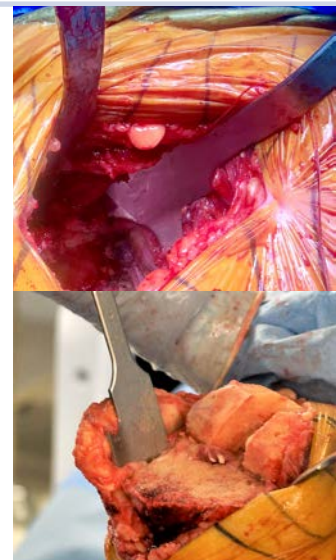
Designed for use in both hip and knee arthroplasty procedures

During direct anterior hip arthroplasty procedures, the fin of this retractor fits the contours of the acetabular rim and retracts the anterior soft tissues, while the short length of the spike helps limit the penetration into the neurovascular zones.

In knee surgery, the retractors can be used to help protect the patellar tendon behind the fin at the lateral tibial border. Also useful as a soft-tissue and fat pad retractor during prosthesis implantation, helping to ensure a dry cancellous bed for cementation, and thus aid in prosthesis long-term survival.



| PRODUCT NO'S:  |   |
|----------------|---|
| 4554-L [Left]  | Overall Length: 11.25" (28,6 cm)<br>Blade Width: 1.5" (38 mm) |
| 4554-R [Right] | Overall Length: 11.25" (28,6 cm)<br>Blade Width: 1.5" (38 mm) |

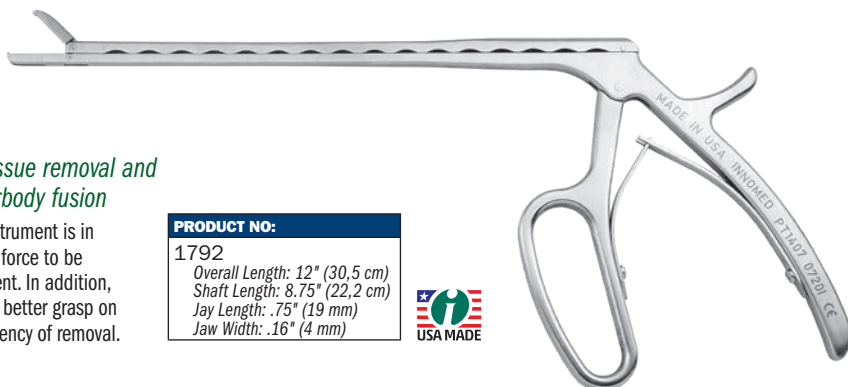


## Pituitary Rongeur with Teeth

Designed by Michael Murray, MD

Designed to optimize the efficiency of soft tissue removal and disc space preparation prior to a spinal interbody fusion

Unique design ensures that only the distal tip of the instrument is in contact upon closure of the jaws, allowing the grasping force to be optimized, and directed at the distal tip of the instrument. In addition, the teeth at the distal end of the instrument allow for a better grasp on tissues or disc material, for enhanced control and efficiency of removal.



| PRODUCT NO: |  |
|-------------|--|
| 1792        | Overall Length: 12" (30,5 cm)<br>Shaft Length: 8.75" (22,2 cm)<br>Jaw Length: .75" (19 mm)<br>Jaw Width: .16" (4 mm) |

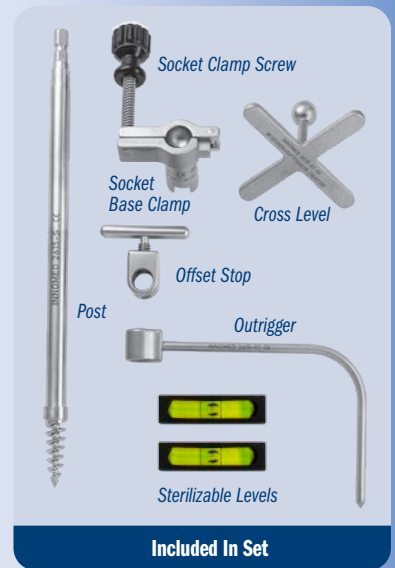
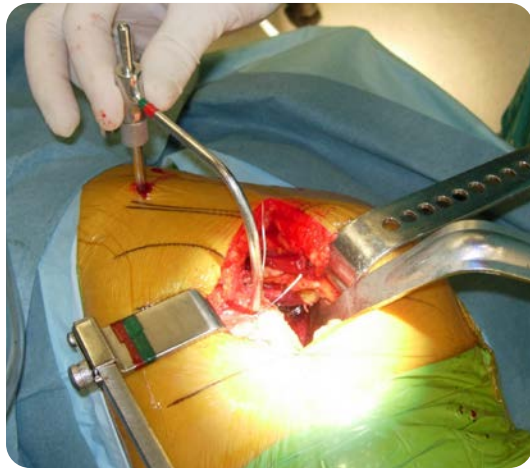


# Parsley Intraoperative Leg Length Device

Designed by Brian S. Parsley, MD

For use with lateral femoral positioned patients in both the direct lateral and posterior hip approaches, the device is designed to help with intraoperative leg length and femoral offset assessment, and can be placed prior to dislocation of the hip and replaced following trial implantation and reduction, and again at the time of final implantation and reduction

Technique Available On Innomed Website



Included In Set

### PRODUCT NO'S:

2615-00 [Set with Case]

Set Includes:

2615-10 [Leg Length Device Assembly]

1180 [Sterilizable Level]

Two included in set; one with this product number

1015 [Sterilization Case]



# Stainless Steel Ratchet Frame with Arms and Blades Sets

Designed for self-retaining wound exposure, the arms and blades of the OrthoLucent™ version are radiolucent and can be kept in place while using image intensification or taking an x-ray

- ▶ Arms rotate 180°
- ▶ Mobile Arm unit can be detached from ratchet body for cleaning

## Set with OrthoLucent™ Arms and Blades

The OrthoLucent arms and blades are made of a strong, lightweight carbon fiber PEEK composite material, which is radiolucent, helps to prevent from marring component surfaces, and can be steam sterilized.



OrthoLucent Parts  
MADE EXCLUSIVELY FOR INNOMED IN SWITZERLAND

Stainless Steel Parts  
USA MADE



(1) 50 mm & (1) 75 mm blade included in each set. Optional 100 mm blade available separately.

| PRODUCT NO'S:                                |   |
|--|---|
| 7428-00                                      | [Stainless Steel Ratchet Frame with OrthoLucent Arms & Blades Set]  |
| <b>Set Includes:</b>                         |   |
| 7428-01A                                     | [Mobile OrthoLucent Arm]  |
| 7428-01B                                     | [Stationary OrthoLucent Arm]  |
| 7427-02                                      | [50 mm OrthoLucent Blade]<br>Dimensions: 50 mm Deep X 25 mm Wide  |
| 7427-03                                      | [75 mm OrthoLucent Blade]<br>Dimensions: 75 mm Deep X 25 mm Wide  |
| <b>Optional Blade – Not Included In Set:</b> |   |
| 7427-04                                      | [100 mm OrthoLucent Blade]<br>Dimensions: 100 mm Deep X 25 mm Wide  |
| <b>Other Options Available Are:</b>          |   |
| 7428-01                                      | [Stainless Steel Ratchet Frame with OrthoLucent Arms Assembly]<br>Dimensions (Flat): 10" x 6.625" (25,4 cm x 14,3 cm)<br>Arms Extend: 4.25" (10,8 cm) |

## Set with Stainless Steel Arms and Blades



### PRODUCT NO'S:

7429-00 [Stainless Steel Ratchet Frame with Stainless Steel Arms & Blades Set]

Set Includes:

7429-01A [Mobile Stainless Steel Arm]

7429-01B [Stationary Stainless Steel Arm]

7429-02 [50 mm Stainless Steel Blade]  
Dimensions: 50 mm Deep X 25 mm Wide

7429-03 [75 mm Stainless Steel Blade]  
Dimensions: 75 mm Deep X 25 mm Wide

**Optional Blade – Not Included In Set:**

7429-04 [100 mm Stainless Steel Blade]  
Dimensions: 100 mm Deep X 25 mm Wide

**Other Options Available Are:**

7429-01 [Stainless Steel Ratchet Frame with Stainless Steel Arms Assembly]  
Dimensions (Flat): 10" x 6" (25,4 cm x 15,3 cm)  
Arms Extend: 4.875" (12,4cm)



**Innomed, Inc**  
103 Estus Drive  
Savannah, GA 31404  
USA

Tel 912.236.0000  
Fax 912.236.7766

[www.innomed.net](http://www.innomed.net)  
info@innomed.net

**Innomed-Europe LLC**  
Alte Steinhauserstrasse 19  
CH-6330 Cham, Switzerland  
Tel 0041 (0) 41 740 67 74  
Fax 0041 (0) 41 740 67 71

[www.innomed-europe.com](http://www.innomed-europe.com)  
info@innomed-europe.com  
contact.france@innomed-europe.com

innomed-europe.com

**Innomed-Europe GmbH**  
c/o Emons Logistik GmbH  
In Rammelswiesen 9 D-78056  
Villingen-Schwenningen  
Deutschland

Tel 0049 (0) 7720 46110 60  
Fax 0049 (0) 7720 46110 61

[www.innomed-europe.com](http://www.innomed-europe.com)  
info@innomed-europe.com