

# Powers Modified Kocher Clamp

Designed by Mark Powers, MD

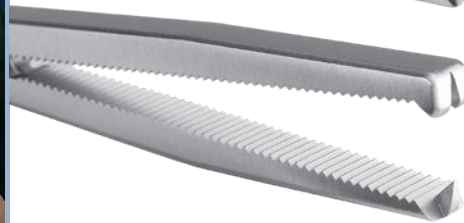
*Heavier design allows for a firmer grasping of bone and soft tissues*



*Tapered Jaw*



*Tapered Narrow Jaw*



*Square Jaw*



#### PRODUCT NO'S:

1813 [Tapered Jaw]  
 Overall Length: 8.25" (21 cm)  
 Jaw Length: 2.5" (6,4 cm)  
 Jaw at End: 5.2 mm x 4.1 mm

1813-01 [Tapered Narrow Jaw]  
 Overall Length: 8.25" (21 cm)  
 Jaw Length: 2.5" (6,4 cm)  
 Jaw at End: 5.2 mm x 3 mm

1814 [Square Jaw]  
 Overall Length: 8.25" (21 cm)  
 Jaw Length: 2.5" (6,4 cm)  
 Jaw at End: 6.5 mm x 5 mm

[www.innomed.net](http://www.innomed.net)

FREE TRIAL ON MOST INSTRUMENTS

**INNOMED** 

ISO 13485:2016



103 Estus Drive, Savannah, GA 31404  
 info@innomed.net

912.236.0000 Phone  
 912.236.7766 Fax

Innomed-Europe Tel. +41 41 740 67 74  
 info@innomed-europe.com

1.800.548.2362