

Levy Wide Deltoid Retractor

Designed by Jonathan Levy, MD

Designed for management of proximal humerus fractures—facilitates appropriate deltoid retraction without interference during active fluoroscopy

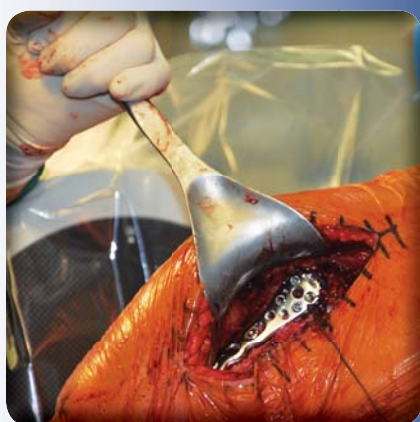
Contoured to match the curve of the deltoid, the retractor helps to retract the entire deltoid laterally during the deltopectoral approach. The width approximates 2/3 the length of the deltoid, while the blade is deep enough to help control the entire deltoid without displacement of the tuberosity reduction. Sized to fit deltoids in small and large patients.

PRODUCT NO:

1672
Overall Length: 11.75"
Blade at Widest: 2.5"
Blade Depth: 1.375"

Patent Pending

**PROUDLY
MADE
IN THE USA**



ISO 9001:2008 • ISO 13485:2003

FREE TRIAL ON MOST INSTRUMENTS



103 Estus Drive, Savannah, GA 31404
www.innomed.net info@innomed.net

912.236.0000 Phone
912.236.7766 Fax

Scan to
Launch Our
Website



INNOMED

Innomed-Europe Tel. +41 41 740 67 74
Fax +41 41 740 67 71

1.800.548.2362