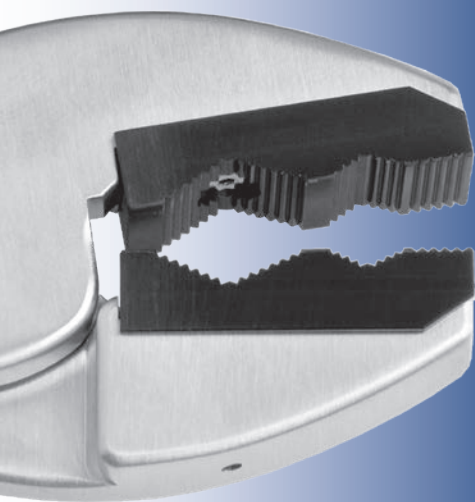


Delrin Insert Pliers

Designed to grasp an implant for adjustment without marring the implant surface



PRODUCT NO'S:
2025 <i>Overall Length: 8" (20,3 cm)</i>
Replacement Part:
2025-03 [Replacement Insert] <i>Includes top and bottom delrin jaws, two screws and a hex wrench</i>



www.innomed.net

ISO 13485:2016

FREE TRIAL ON MOST INSTRUMENTS

INNOMED



103 Estus Drive, Savannah, GA 31404
info@innomed.net

912.236.0000 Phone
912.236.7766 Fax

Innomed-Europe Tel. +41 41 740 67 74
info@innomed-europe.com

1.800.548.2362