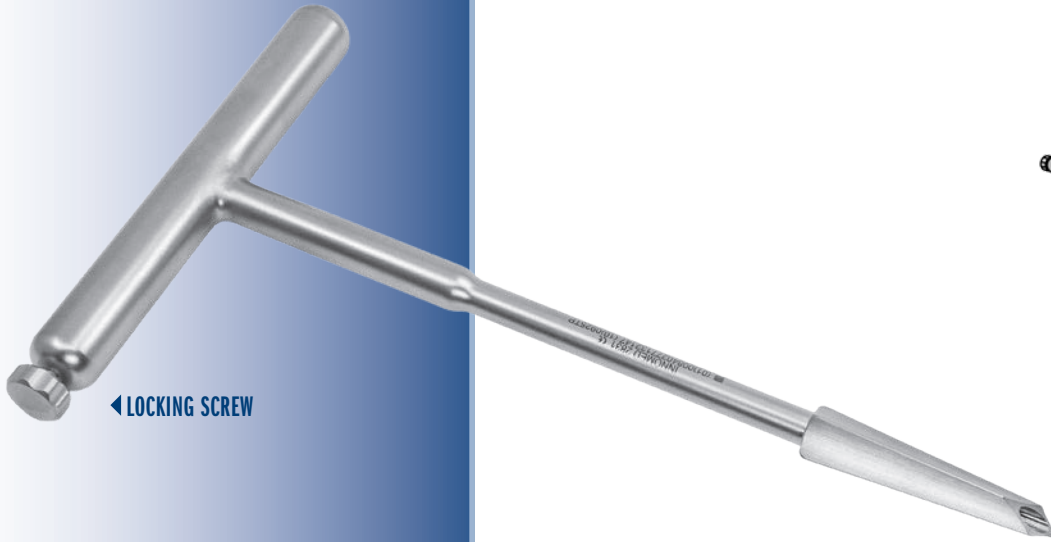


Chaudhari Universal Nail Entry Guide

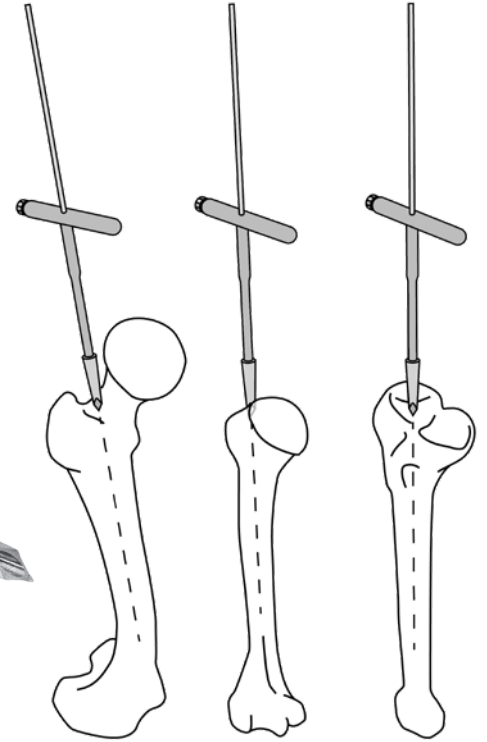
Designed by Ashutosh S. Chaudhari, MD

Universal entry point cannulated awl can be used for PFN nailing in hip fractures, femur antegrade and retrograde nailing, tibia nailing, and proximal humerus nailing

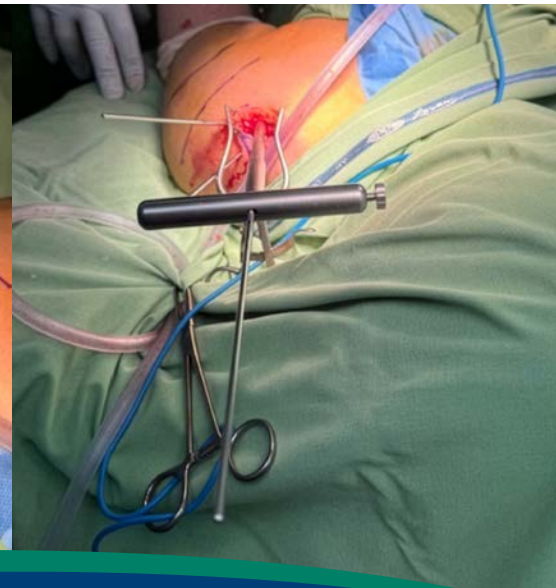
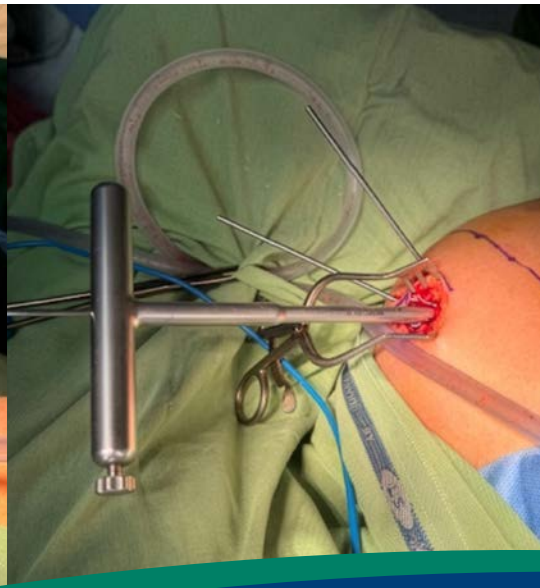
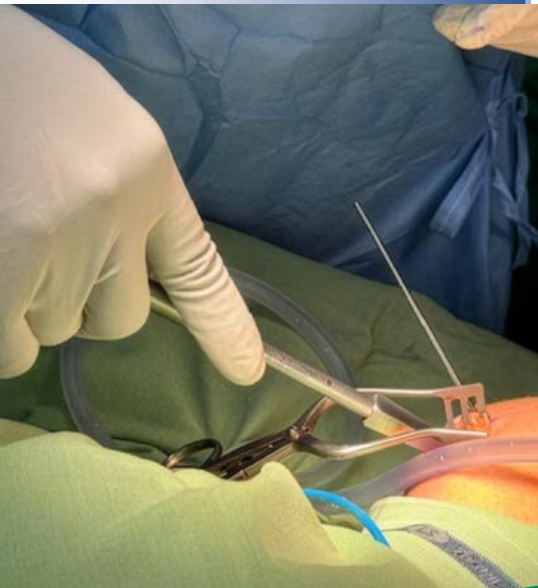
- ▶ Used to manipulate the guide wire in two planes to help get perfect entry trajectory.
- ▶ The locking screw on the end of the handle can be used to lock the guide wire in the cannulated channel.



◀ LOCKING SCREW



PRODUCT NO:
2831
 Overall Length: 7.7" (19,6 cm)
 Handle Length: 4.7" (12 cm)
 Trocar End Length: 2" (5,1 cm)



www.innomed.net



FREE TRIAL ON MOST INSTRUMENTS

INNOMED

ISO 13485:2016


103 Estus Drive, Savannah, GA 31404
 info@innomed.net

912.236.0000 Phone
 912.236.7766 Fax

Innomed-Europe Tel. +41 41 740 67 74
 info@innomed-europe.com

1.800.548.2362