

Charnley Type Tissue Needle Forceps

Designed by Amal Das Jr., MD

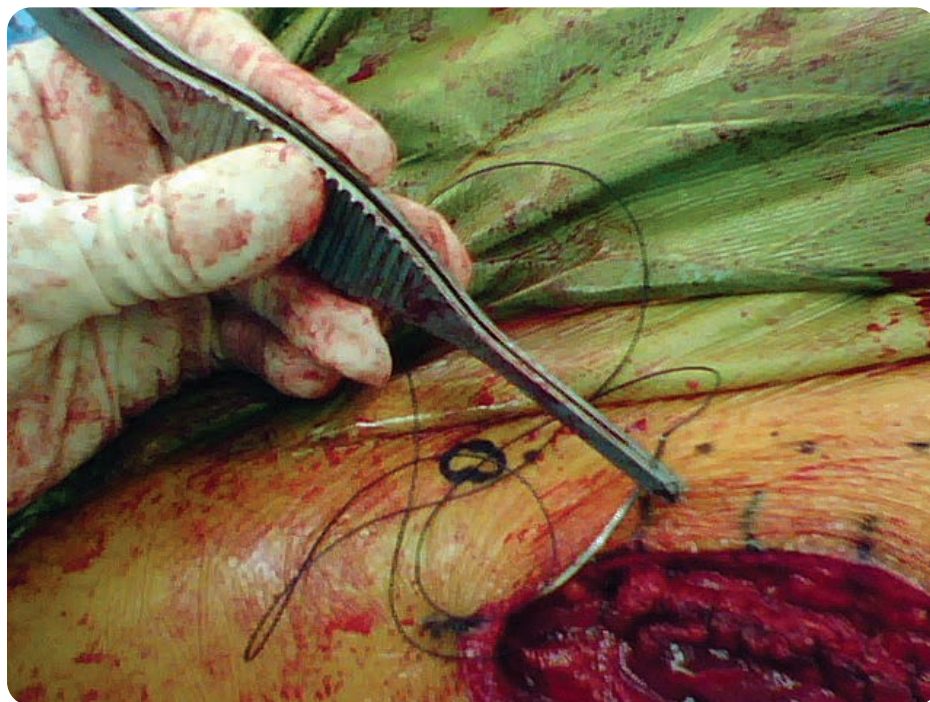
Helpful for wound closure in deep areas with fascia under tension, the forceps can help retrieve a needle in a tight spot

PRODUCT NO:

1165

Overall Length: 6.875" 17,5 cm

MADE FOR INNOMED IN
GERMANY



www.innomed.net

ISO 13485:2016

FREE TRIAL ON MOST INSTRUMENTS

INNOMED



103 Estus Drive, Savannah, GA 31404
info@innomed.net

912.236.0000 Phone
912.236.7766 Fax

Innomed-Europe Tel. +41 41 740 67 74
info@innomed-europe.com

1.800.548.2362

© 2023 Innomed, Inc.