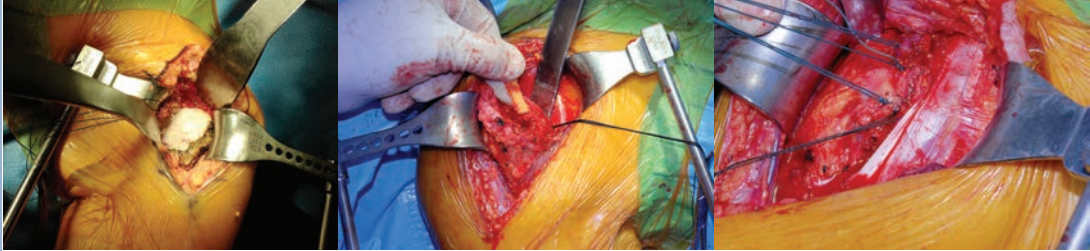


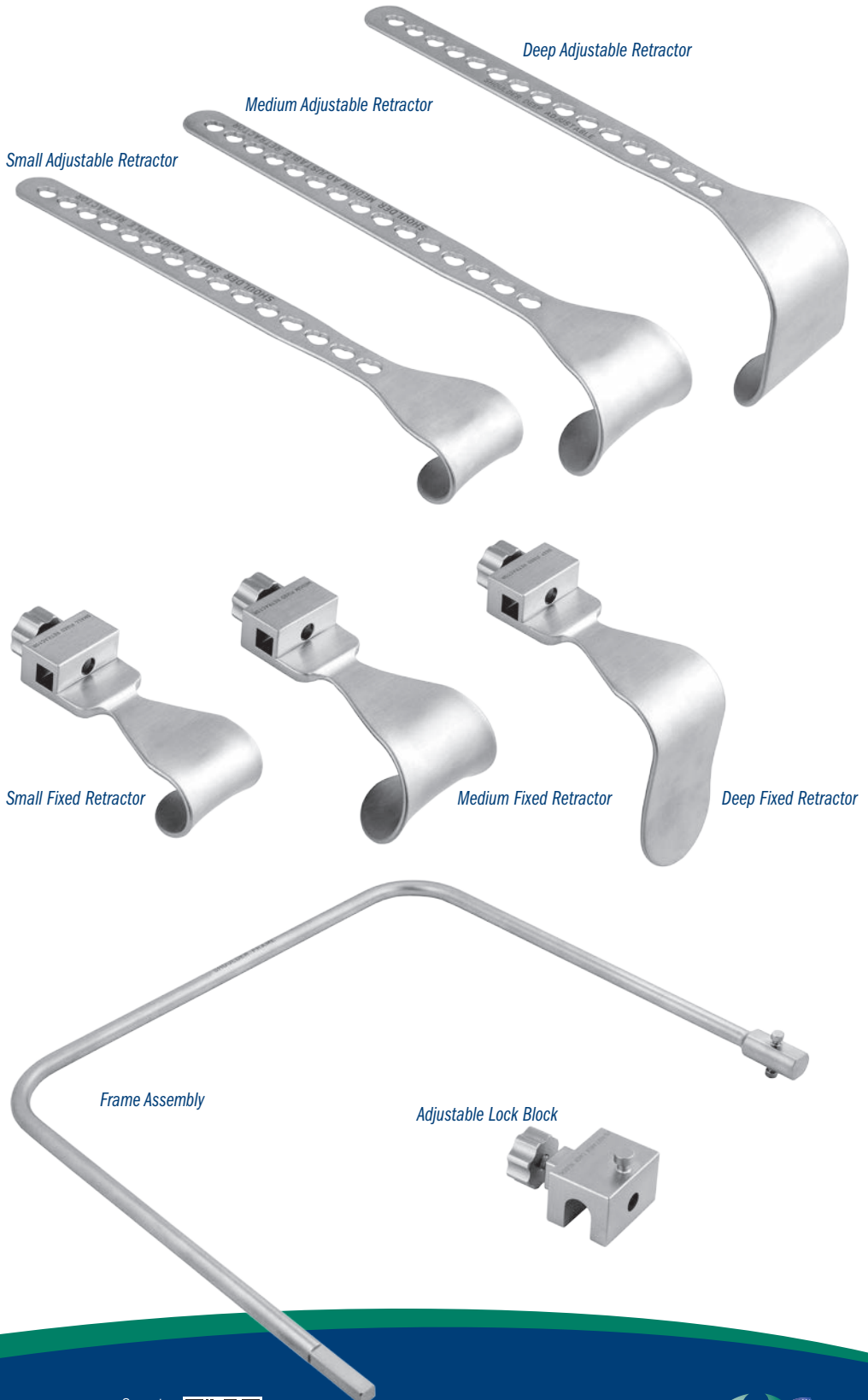
Bell-Hawkins Shoulder Frame and Blade Set

Designed by Robert H. Bell, MD and Richard Hawkins, MD

Retractor and Frame System for Total Shoulder Arthroplasty



PRODUCT NO'S:	
4696-00	[Bell-Hawkins – Complete Set]
Included in Set/Available Individually:	
4696-01	[Small Adjustable Retractor] Overall Length: 7.375" (18,7 cm) Handle Length: 6" (15,2 cm) Blade Width: 1.25" (32 mm) Blade Depth: .8" (20 mm)
4696-02	[Medium Adjustable Retractor] Overall Length: 7.375" (18,7 cm) Handle Length: 6" (15,2 cm) Blade Width: 1.7" (43 mm) Blade Depth: 1.25" (32 mm)
4696-03	[Deep Adjustable Retractor] Overall Length: 7.375" (18,7 cm) Handle Length: 6" (15,2 cm) Blade Width: 1.6" (41 mm) Blade Depth: 2" (51 mm)
4696-04	[Small Fixed Retractor] Overall Length: 3" (7,6 cm) Handle Length: 1.5" (3,8 cm) Blade Width: 1.25" (32 mm) Blade Depth: .8" (20 mm)
4696-05	[Medium Fixed Retractor] Overall Length: 3" (7,6 cm) Handle Length: 1.5" (3,8 cm) Blade Width: 1.7" (43 mm) Blade Depth: 1.25" (32 mm)
4696-06	[Deep Fixed Retractor] Overall Length: 3" (7,6 cm) Handle Length: 1.5" (3,8 cm) Blade Width: 1.25" (32 mm) Blade Depth: 2.375" (60 mm)
4696-07	[Adjustable Lock Block] Dimensions: 1.375" x 1" x .85" (35 mm x 25 mm x 20 mm)
4696-Frame	[Frame Assembly] Dimensions: 10" x 9" (25,4 cm x 22,9 cm)



ISO 9001:2008 • ISO 13485:2003

FREE TRIAL ON MOST INSTRUMENTS

Scan to
Launch Our
Website



INNOMED



103 Estus Drive, Savannah, GA 31404
www.innomed.net info@innomed.net

912.236.0000 Phone
912.236.7766 Fax

Innomed-Europe Tel. +41 41 740 67 74
Fax +41 41 740 67 71

1.800.548.2362