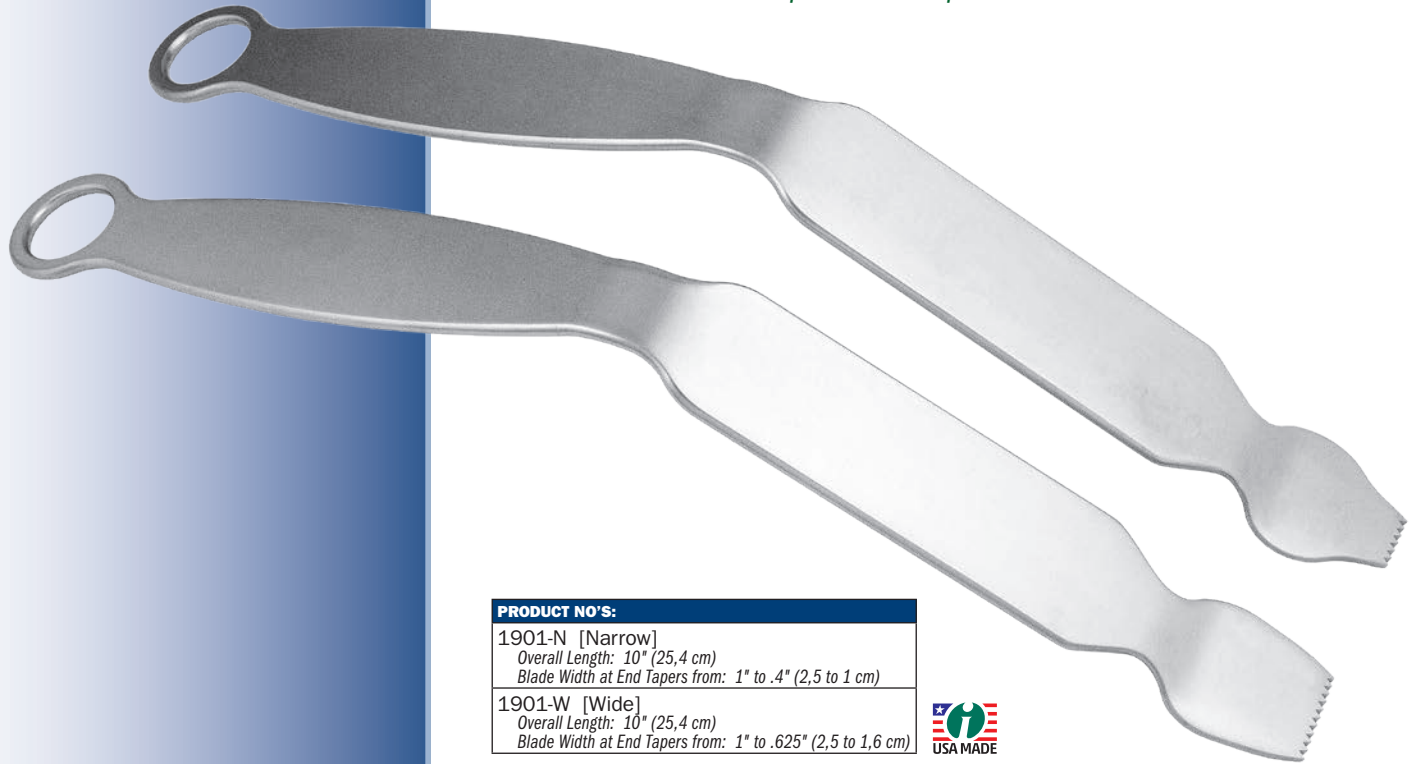


Angled Glenoid Retractor

Designed by R.L. Stowell, MD

Flared design allows for atraumatic placement circumferentially about the glenoid – superior, anterior and inferior – during open shoulder procedures for retraction of the subscapularis and capsule and to facilitate labral work



PRODUCT NO'S:

1901-N [Narrow]

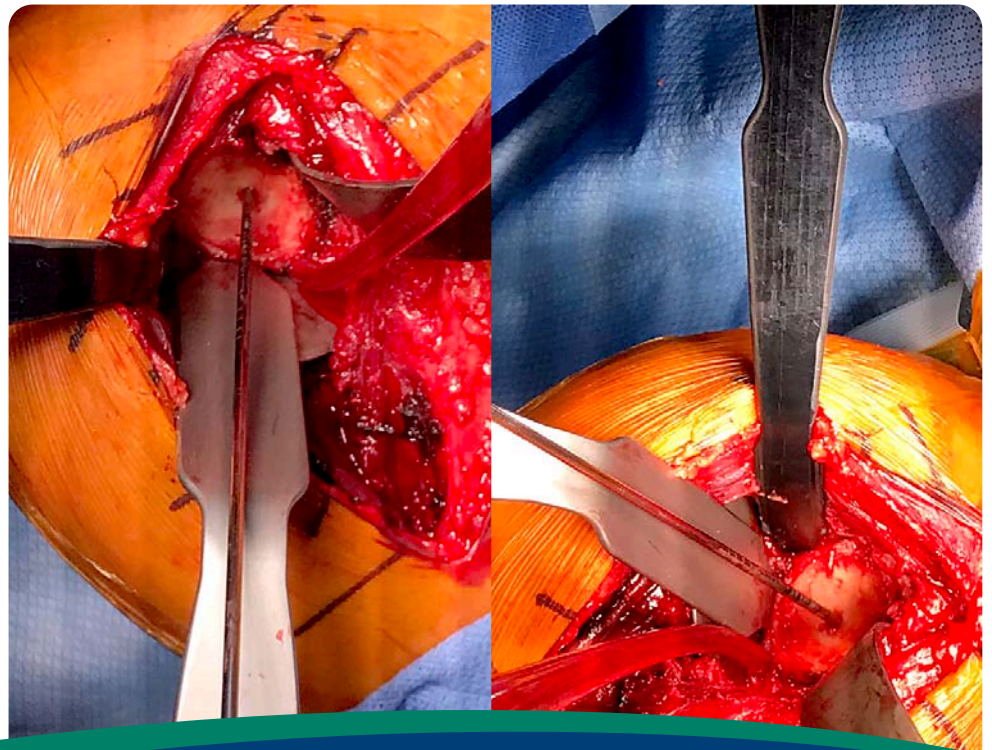
Overall Length: 10" (25,4 cm)

Blade Width at End Tapers from: 1" to .4" (2,5 to 1 cm)

1901-W [Wide]

Overall Length: 10" (25,4 cm)

Blade Width at End Tapers from: 1" to .625" (2,5 to 1,6 cm)



ISO 13485:2016

FREE TRIAL ON MOST INSTRUMENTS

Scan to
Launch Our
Website



INNOMED 



103 Estus Drive, Savannah, GA 31404
www.innomed.net info@innomed.net

912.236.0000 Phone
912.236.7766 Fax

Innomed-Europe Tel. +41 41 740 67 74
Fax +41 41 740 67 71

1.800.548.2362