

# INNOMED

ORTHOPEDIC INSTRUMENTS



OCTOBER  
2023



**Modified Winged  
Fukuda Retractor**  
Page 7



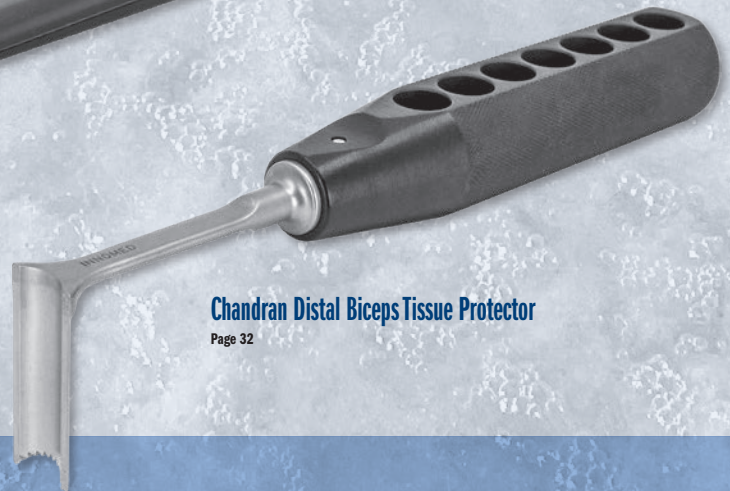
**Stoll Bone Plate Clamp**  
Page 27

Featuring many **New!** instruments inside



**Kolbel Self-Retaining  
Glenoid Retractor with  
Center Blade & Ergonomic  
Handle**  
Page 18

**Wiater Shoulder Slide**  
Page 2



**Chandran Distal Biceps Tissue Protector**  
Page 32

## Shoulder & Elbow Instruments

1.800.548.2362 • [INNOMED.NET](http://INNOMED.NET)

# What's New In This Catalog?

a snapshot of all the *New!* instruments within



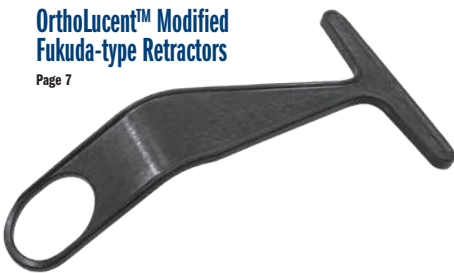
**Bacastow Arthroscopic Deltoid Lift Retractor**  
Page 21



**Beicker Hammerhead Rongeur**  
Page 33



**Chandran Distal Biceps Tissue Protector**  
Page 32



**OrthoLucent™ Modified Fukuda-type Retractors**  
Page 7



**Rogozinski Glenoid Retractor**  
Page 9



**Superior Coracoid Retractor**  
Page 8



**Wiater Shoulder Slide**  
Page 2



## Wiater Shoulder Slide

Designed by J. Michael Wiater, MD, FAAOS, FAOA

*Designed to help avoid damage to the prosthetic bearing surfaces during dislocation and reduction of a shoulder arthroplasty*

**New!**



Also useful for total hip arthroplasty or hip preservation procedures in smaller patients. Manufactured of delrin to help eliminate damage to the implant. Can be steam or gas sterilized and is radiolucent.

**PRODUCT NO:**  
6879  
Overall Length: 11" (27,9 cm)  
Width: 1.375" (3,5 cm)



# Shoulder Surgery Retractor System

Developed in collaboration with Mayo Clinic.

PRODUCT NO'S:
1251-00 [Complete System]
<b>Included in Set/Available individually:</b>
1252-N [Modified Thin Glenoid Retractor–Narrow] Two included in set; one with this product number Overall Length: 11.875" (30,2 cm) Blade Width: 15 mm
1252-W [Modified Thin Glenoid Retractor–Wide] Two included in set; one with this product number Overall Length: 11.875" (30,2 cm) Blade Width: 23 mm
1253 [Right Angle Hohmann Retractor] Overall Length: 8.125" (20,6 cm) Depth from Bend: 4.25" (10,8 cm) Blade Width: 16 mm
1254 [Modified Fukuda Retractor] Overall Length: 8.625" (21,9 cm) Depth: 2.75" (7 cm) Blade Width: 39 mm
1255-L [Brown Deltoid/Richardson Retractor–Large] Overall Length: 10.5" (26,7 cm) Depth: 2.5" (6,4 cm) Blade Width: 60 mm
1255-S [Brown Deltoid/Richardson Retractor–Small] Overall Length: 10.5" (26,7 cm) Depth: 2.5" (6,4 cm) Blade Width: 44 mm
1256 [Modified Darrach Retractor, Straight–Narrow] Overall Length: 10.25" (26 cm) Blade Width: 12,7 mm
1257 [Modified Darrach Retractor, Straight–Wide] Overall Length: 10.25" (26 cm) Blade Width: 19 mm
1258 [Modified Darrach Retractor, Bent–Narrow] Overall Length: 10.75" (27,3 cm) Blade Width: 12,7 mm
1259 [Modified Darrach Retractor, Bent–Wide] Overall Length: 10.75" (27,3 cm) Blade Width: 19 mm
1260 [Soft Tissue Shoulder Retractor] Overall Length: 10" (25,4 cm) Depth from Bend: 3" (7,6 cm) Blade Width: 19 mm
1261 [Glenoid Access Retractor] Overall Length: 13.5" (34,3 cm) Access Hole Internal Diameter: 36 mm X 30 mm Depth of Prongs: 8.5 mm



System includes two of each size of the Modified Thin Glenoid Retractors, and one of each of the other retractors.

Modified Thin Glenoid Retractor–Narrow & Wide

Right Angle Hohmann Retractor

Modified Fukuda Retractor

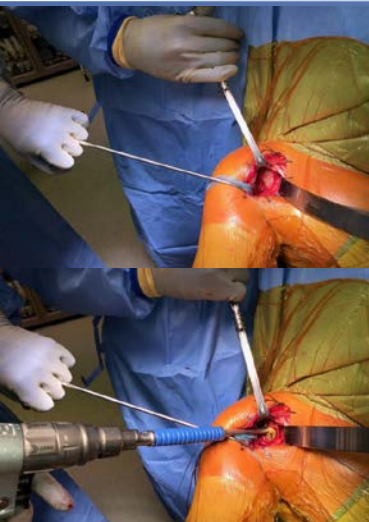
Brown Deltoid/Richardson Retractor–Large & Small

Modified Darrach Retractor, Straight–Narrow & Wide

Modified Darrach Retractor, Bent–Narrow & Wide

Soft Tissue Shoulder Retractor

Glenoid Access Retractor



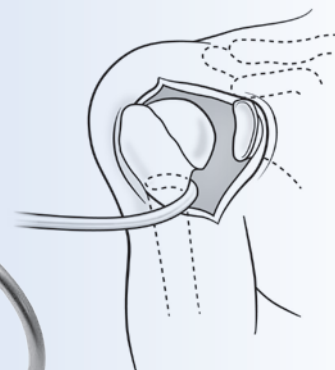
## Wiater Shoulder Bone Hook

Designed by J. Michael Wiater, MD, FAAOS, FAOA

Large bone hook designed to retract the proximal humerus posteriorly to help provide exposure for glenoid reaming during open shoulder procedures

<b>PRODUCT NO:</b>
5079
Curve Diameter: 2.68" (68 mm)
Overall Length: 11.25" (28,6 cm)
Handle Width: 4" (10,2 cm)

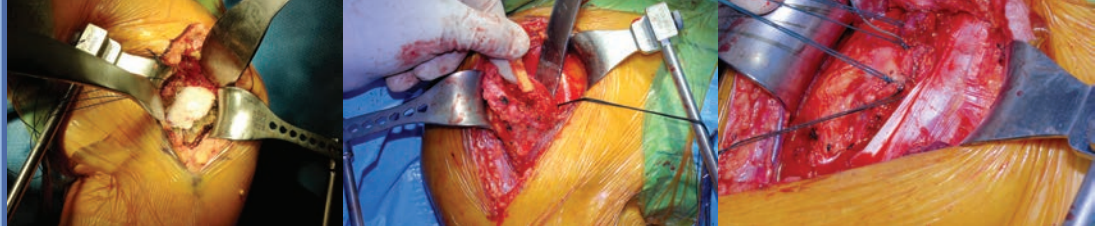
Also useful for other large joint procedures.



# Bell-Hawkins Shoulder Frame and Blade Set

Designed by Robert H. Bell, MD and Richard Hawkins, MD

*Retractor and Frame System for Total Shoulder Arthroplasty*



PRODUCT NO'S:
4696-00 [Bell-Hawkins - Complete Set]
<b>Included in Set/Available individually:</b>
4696-01 [Small Adjustable Retractor] Overall Length: 7.375" (18,7 cm) Handle Length: 6" (15,2 cm) Blade Width: 1.25" (32 mm) Blade Depth: .8" (20 mm)
4696-02 [Medium Adjustable Retractor] Overall Length: 7.375" (18,7 cm) Handle Length: 6" (15,2 cm) Blade Width: 1.7" (43 mm) Blade Depth: 1.25" (32 mm)
4696-03 [Deep Adjustable Retractor] Overall Length: 7.375" (18,7 cm) Handle Length: 6" (15,2 cm) Blade Width: 1.6" (41 mm) Blade Depth: 2" (51 mm)
4696-04 [Small Fixed Retractor] Overall Length: 3" (7,6 cm) Handle Length: 1.5" (3,8 cm) Blade Width: 1.25" (32 mm) Blade Depth: .8" (20 mm)
4696-05 [Medium Fixed Retractor] Overall Length: 3" (7,6 cm) Handle Length: 1.5" (3,8 cm) Blade Width: 1.7" (43 mm) Blade Depth: 1.25" (32 mm)
4696-06 [Deep Fixed Retractor] Overall Length: 3" (7,6 cm) Handle Length: 1.5" (3,8 cm) Blade Width: 1.25" (32 mm) Blade Depth: 2.375" (60 mm)
4696-07 [Adjustable Lock Block] Dimensions: 1.375" x 1" x .85" (35 mm x 25 mm x 20 mm)
4696-Frame [Frame Assembly] Dimensions: 10" x 9" (25,4 cm x 22,9 cm)

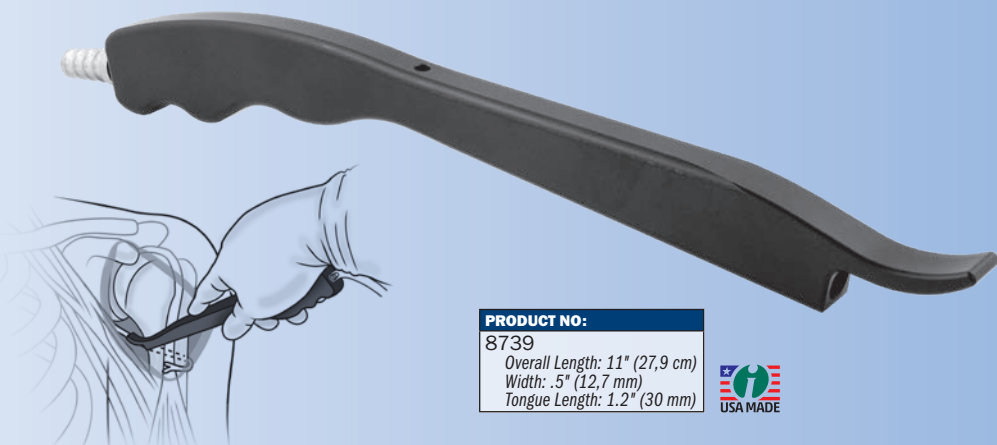


# Bacastow Axillary Nerve Retractor with Suction

Designed by David Bacastow, MD

*Designed with a curved tip to slip all the way under the capsule during shoulder surgery, helping to protect the axillary nerve, while also providing suction of smoke away from the surgical site*

Made of autoclavable Radel material, the unit is non-conductive of current and resists the high temperatures associated with the use of electrocautery.



PRODUCT NO:
8739
Overall Length: 11" (27,9 cm)
Width: .5" (12,7 mm)
Tongue Length: 1.2" (30 mm)



# Hawkins Shoulder Instruments

Designed by Richard J. Hawkins, MD

*Designed to enhance exposure during shoulder arthroplasty procedures*



Large Spreader w/Articular Arms

Small Spreader w/Articular Arms

Anterior Capsular Retractor

Small Pectoralis Retractor

Extra Small Pectoralis Retractor

Cobb Elevator

Humeral Head Retractor

Anterior Glenoid Retractor

Deltoid Retractor

Modified Darrach Retractor

PRODUCT NO'S:	
5090	[Small Spreader w/Articular Arms] Overall Length: 6.25" (15,9 cm) Arm Depth: 2.25" (5,7 cm) Prong Width: 21 mm Prong Length: 16 mm
5091	[Large Spreader w/Articular Arms] Overall Length: 10.5" (26,7 cm) Arm Depth: 2.375" (6 cm) Prong Width: 23 mm Prong Length: 23 mm
5092	[Anterior Capsular Retractor] Overall Length: 11.25" (28,6 cm) Handle Length: 5.25" (13,3 cm) Blade Depth: 3.25" (8,3 cm) Blade Width: 19 mm
5093	[Small Pectoralis Retractor] Overall Length: 10.25" (26 cm) Handle Length: 5.25" (13,3 cm) Blade Depth: 2.5" (6,4 cm) Blade Width: 25 mm
5094	[Extra Small Pectoralis Retractor] Overall Length: 11" (27,9 cm) Handle Length: 5.25" (13,3 cm) Blade Depth: 1.5" (3,8 cm) Blade Width: 25 mm
5095	[Cobb Elevator] Overall Length: 11" (27,9 cm) Handle Length: 5.5" (14 cm) Blade Width: 19 mm
5096	[Humeral Head Retractor] Overall Length: 9" (22,9 cm) Blade Depth: 2.75" (7 cm) Blade Width: 37 mm
5097	[Anterior Glenoid Retractor] Overall Length: 11" (27,9 cm) Blade Depth: 2.75" (7 cm) Blade Width @ Fat Pad: 34 mm Blade Width @ Neck: 18 mm
5098	[Deltoid Retractor] Overall Length: 9.5" (24,1 cm) Blade Depth: 3.75" (9,5 cm) Blade Width @ Fat Pad: 45 mm Blade Width @ Neck: 32 mm
5099	[Modified Darrach Retractor] Overall Length: 10.75" (27,3 cm) Blade Width: 19 mm



## Axillary Nerve Protector

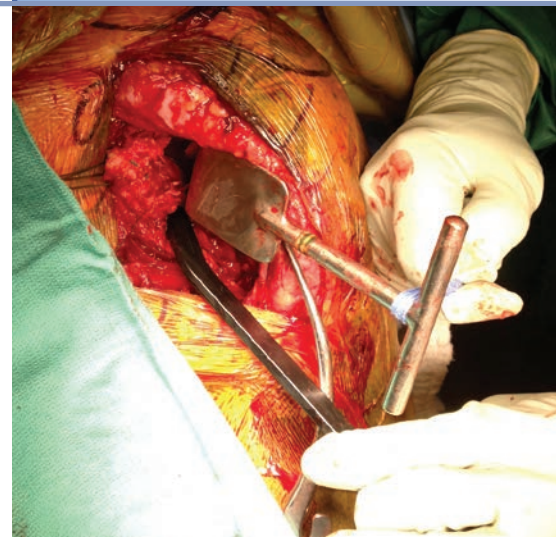
Designed by Brett Sanders, MD

*Designed for inferior capsular release during shoulder arthroplasty and glenoid exposure*

The tapered freer end helps separate the axillary nerve and inferior capsule, even in difficult exposures. Non-conductive material allows the use of a bovie knife directly in the small channel cutting guide (on both sides). Reversible for right and left use.



PRODUCT NO:	
8029	Overall Length: 7.125" (18,1 cm) Width: 12 mm Thickness: 4 mm





## Modified Darrach-type Elevators

Available in four widths. Used for soft tissue retraction and exposure. May also be used to lever the humeral head inferiorly or superiorly and medially to expose the humeral head from the glenoid while dislocating the humeral head after subcapularis removal. May also be used to retract the humeral shaft posteriorly to help expose the glenoid.



PRODUCT NO'S:	
1950 [3/8" (10 mm)]	Blade Width: 10 mm Overall Length: 10.75" (27,3 cm)
1955 [1/2" (13 mm)]	Blade Width: 12 mm Overall Length: 10.75" (27,3 cm)
1960 [3/4" (19 mm)]	Blade Width: 19 mm Overall Length: 10.75" (27,3 cm)
1965 [1.0" (25 mm)]	Blade Width: 25 mm Overall Length: 10.75" (27,3 cm)



## Thin Glenoid Retractors

Available in narrow and wide sizes. Used for retraction of the anterior and posterior aspects of the anterior and posterior glenoid rim.



PRODUCT NO'S:	
1910 Narrow	Blade Width: 14 mm Overall Length: 11" (27,9 cm)
1920 Wide	Blade Width: 22 mm Overall Length: 11" (27,9 cm)



## Posterior Glenoid Elevators

Available in three widths. Used to help expose the posterior aspect of the glenoid. The curved tip allows the elevator to fit on the posterior rim of the glenoid. The curve in the elevator contours to the humeral shaft for posterior retraction.

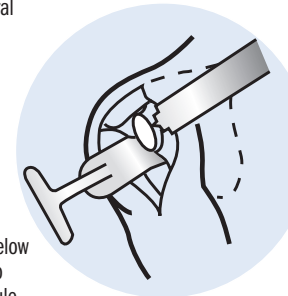


PRODUCT NO'S:	
1980 [3/8" (10 mm)]	Blade Width: 10 mm Overall Length: 11" (27,9 cm)
1985 [1/2" (13 mm)]	Blade Width: 12 mm Overall Length: 11" (27,9 cm)
1990 [3/4" (19 mm)]	Blade Width: 19 mm Overall Length: 11" (27,9 cm)



## Spiked Darrach-type Elevator

The spiked elevator is used slightly below the anterior rim of the glenoid to help retract the labrum and anterior capsule.

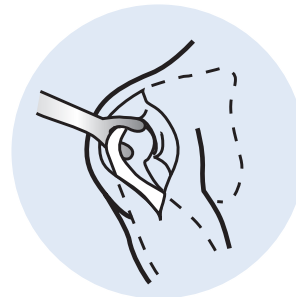


PRODUCT NO:	
1970 Narrow	Blade Width: 19 mm Overall Length: 10.75" (27,3 cm)



## Bicep Elevator

Used to help retract the biceps tendon superiorly. The two extensions allow the long head of the biceps to fit between them. The edges fit on the superior portion of the glenoid rim.



PRODUCT NO:	
1975	Blade Width: 25 mm Overall Length: 10.75" (27,3 cm)



## Modified Fukuda-type Retractors

Available in small and large sizes. Used to retract the humeral shaft posteriorly and helping to expose the entire glenoid surface.



PRODUCT NO'S:	
1930 Narrow	Blade Width: 32 mm Opening: 25 x 40 mm Overall Length: 7.25" (18,4 cm)
1940 Wide	Blade Width: 38 mm Opening: 32 x 40 mm Overall Length: 7.25" (18,4 cm)

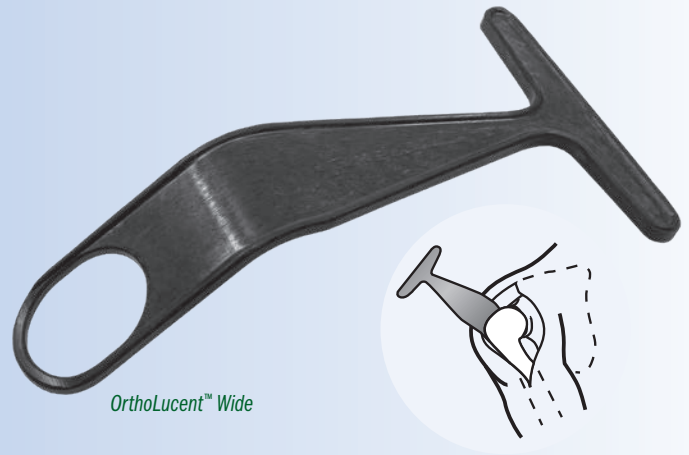
## OrthoLucent™ Modified Fukuda-type Retractors

Used to retract the humeral shaft posteriorly, helping to expose the entire glenoid surface, the carbon fiber PEEK composite material is strong, lightweight, completely radiolucent, helps to prevent from marring component surfaces, and can be steam sterilized

PRODUCT NO'S:
1930-R [OrthoLucent™ Narrow] Blade Width: 32 mm Opening: 25 x 40 mm Overall Length: 7.5" (19,1 cm)
1940-R [OrthoLucent™ Wide] Blade Width: 38 mm Opening: 32 x 40 mm Overall Length: 7.5" (19,1 cm)

MADE EXCLUSIVELY  
FOR WOMEN IN  
SWITZERLAND

**New!**



OrthoLucent™ Wide



Center cutout slot allows the shaft of a reamer to fit more posteriorly

## Modified Fukuda-type Retractor with Reamer Slot

Designed by Richard J. Miller, MD

PRODUCT NO'S:
1898 [Narrow] Overall Length: 7.25" (18,4 cm) Blade Width: 32 mm Opening: 25 x 40 mm
1899 [Wide] Overall Length: 7.25" (18,4 cm) Blade Width: 38 mm Opening: 32 x 40 mm



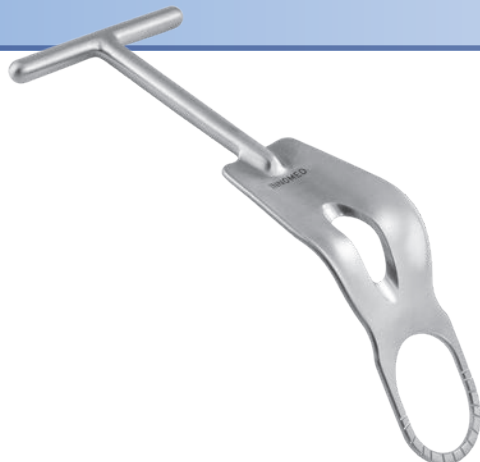
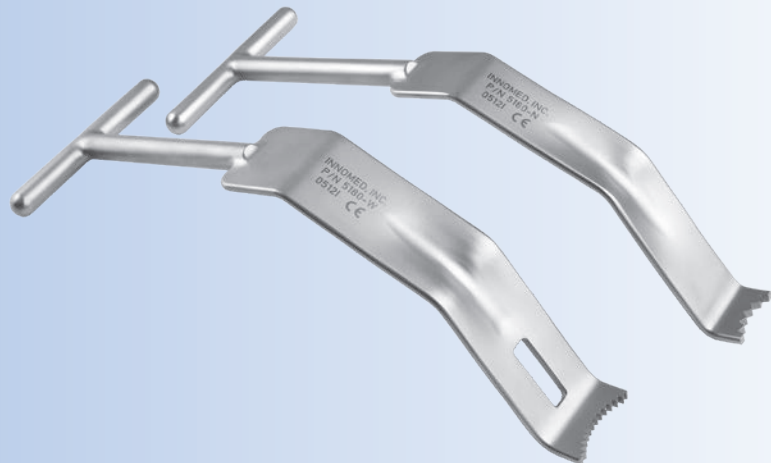
## Evans Modified Fukuda-type Retractors

Designed by Peter J. Evans, MD

Designed to retract the humeral shaft posteriorly, helping to expose the glenoid surface

Center groove allows a reamer shaft to fit more posteriorly.

PRODUCT NO'S:	
5180-N [Narrow] Overall Length: 8.625" (21,9 cm) Blade Width: 1" (25,4 mm) Blade Depth: 3.75" (9,5 cm)	5180-W [Wide] Overall Length: 8.625" (21,9 cm) Blade Width: 1.25" (31,7 mm) Blade Depth: 3.75" (9,5 cm)



## Modified Winged Fukuda Retractor

Designed by Scot Rheinecker, PA

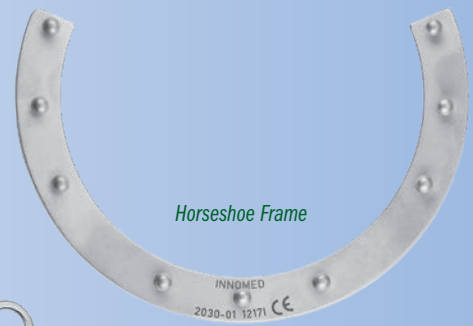
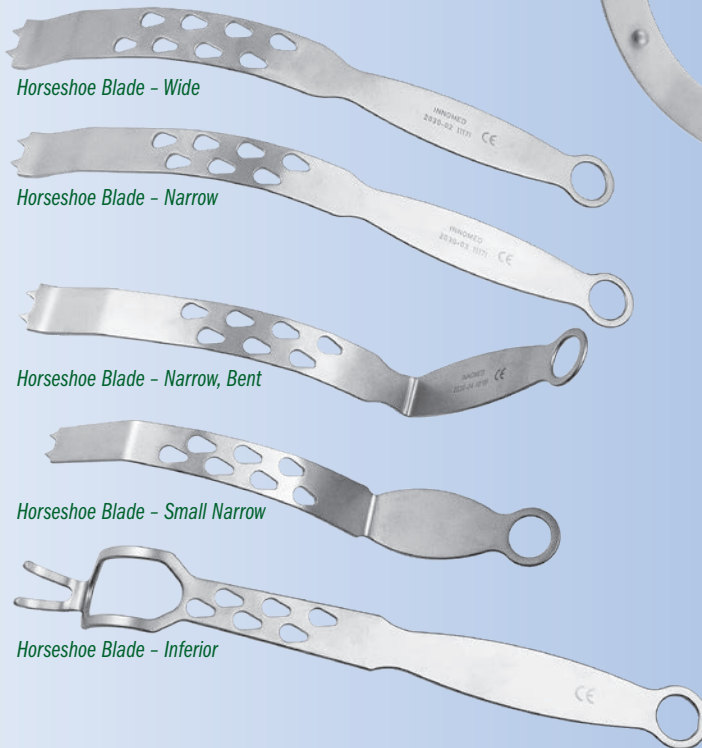
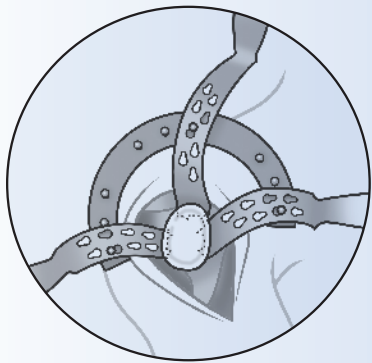
Designed with flared edges for less pressure on soft tissues

PRODUCT NO:
1896 Overall Length: 7.5 (19,1 cm) Blade Width: 36 mm Opening: 29 x 40 mm

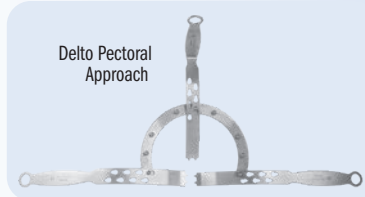


# Horseshoe Shoulder Frame and Blade Assembly

Designed to enhance exposure during shoulder arthroplasty procedures



Supero Lateral Approach



Delto Pectoral Approach

PRODUCT NO'S:	
2030-00 [Set]	Includes the frame and the five blades
<b>Also available individually:</b>	
2030-01 [Horseshoe Frame]	Overall Dimensions: 7" x 5" (17,8 cm x 12,7 cm) Frame Width: .7" (15 mm)
2030-02 [Blade - Wide]	Blade Width: 22 mm Overall Length: 11" (27,9 cm)
2030-03 [Blade - Narrow]	Blade Width: 14 mm Overall Length: 11" (27,9 cm)
2030-04 [Blade - Narrow, Bent]	Blade Width: 14 mm Overall Length: 10" (25,4 cm) Handle Length: 4.5" (11,4 cm)
2030-05 [Blade - Small Narrow]	Blade Width: 16 mm Blade Depth: 2" Overall Length: 8.5" (21,6 cm)
2030-06 [Blade - Inferior]	Blade Width: Outside 34 mm, Inside 24 mm Overall Length: 11.5" (29,2 cm) Prong Length: 28 mm



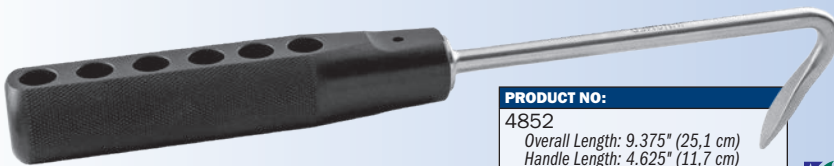
# Superior Coracoid Retractor

Can also be used as a modified mini hohmann retractor in small bone surgery.

PRODUCT NO:
1666-02
Overall Length: 6.25" (15,9 cm)



Superior Coracoid Modification



PRODUCT NO:
4852
Overall Length: 9.375" (25,1 cm)
Handle Length: 4.625" (11,7 cm)
Blade Depth: 1.5" (3,8 cm)
Blade Width at Widest: .325" (8,3 mm)



# Blount Retractor with Small Handle

Designed by Ronald Romanelli, MD

A blount retractor with a lightweight ergonomic handle designed for tissue retraction and closure assistance in knee, shoulder, and hip arthroplasty

# Evans Reverse Hohmann Retractor

Designed by Peter J. Evans, MD

Smaller size useful for retracting the deltoid superiorly or laterally, and also protecting the axillary nerve inferiorly while simultaneously exposing the glenoid



PRODUCT NO:
4547
Overall Length: 8.5" (21,6 cm)
Blade Width: Tapers from 30 mm to 18 mm
Blade Depth: 3" (7,6 cm)
Prong Width: 6 mm





## Rogozinski Glenoid Retractor

Designed by Chaim Rogozinski, MD

*Designed with a unique ergonomic profile to help reduce retraction fatigue and place the assistant's hand out of surgical view, while the undersurface helps stabilize the humeral head to allow excellent visualization of the glenoid*

**PRODUCT NO:**

4271

Overall Length: 11.25" (28,6 cm)

Blade Width: .7" (18 mm)

Prongs Width: 3,4 mm

Handle Width: 4.5" (11,4 cm)



**New!**

## Gunther Glenoid Retractor

Designed by Stephen B. Gunther, MD

*Ergonomic design helps to retract the humeral head posteriorly during glenoid exposure while avoiding reamer contact during shoulder replacement surgery*

**PRODUCT NO:**

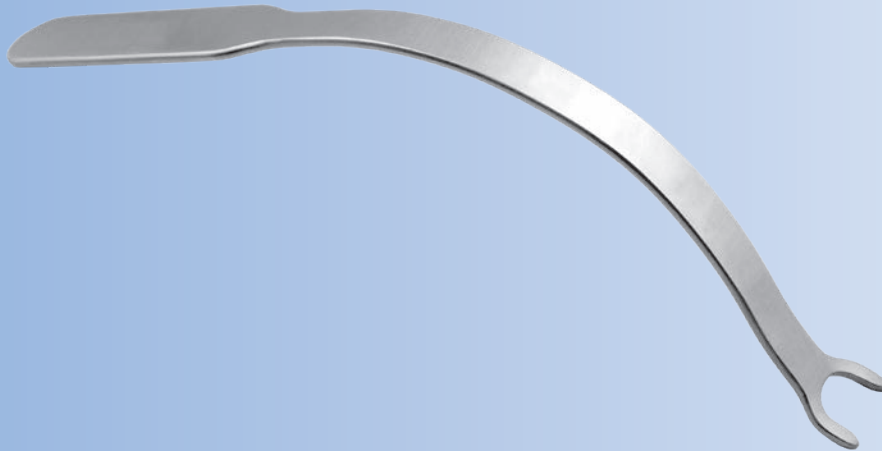
1999

Overall Length: 11" (27,9 cm)

Neck Width: .625" (15,9 mm)

Prong Outside Width: 1" (25,4 mm)

Prong Inside Width: .625" (15,9 mm)



## Levy Anterior Glenoid Retractor

Designed by Jonathan Levy, MD

*Designed to help alleviate tension on anterior glenoid structures and the handle is designed to optionally be clamped to the drape*

**PRODUCT NO:**

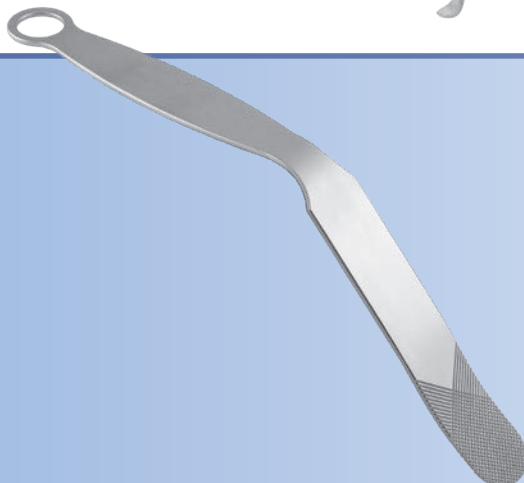
4536

Overall Length: 10.5" (26,7 cm)

Depth from Bend: 5.875" (14,9 cm)

Blade Width: .75" (1,9 cm)

Tooth Gap: .325" (8,2 mm)



## Modified Darrach-type Bent Elevator

Designed modification by R.L. Stowell, MD of original design by Evan Flatow, MD

*Designed for difficult glenoid exposure, the elevator is placed around the posterior glenoid rim, retracting the cut humeral surface*

**PRODUCT NO:**

1966

Overall Length: 10" (25,4 cm)

Blade Depth: 5" (12,7 cm)

Blade Width: 1" (2,54 cm)



## Capsule Retractors

### Retractors for use in Bankart surgery

The single prong retractor is commonly used when retracting on the inferior rim of the glenoid. The two and three-prong retractors are designed to be placed medially along the scapular neck to retract the anterior capsule and labrum.

#### PRODUCT NO'S:

T1008-01 [3 Prongs]  
Overall Length: 10" (25,4 cm)  
Prong Length: 30 mm

T1008 [2 Prongs]  
Overall Length: 10" (25,4 cm)  
Prong Length: 30 mm

T1009 [1 Prong]  
Overall Length: 10" (25,4 cm)  
Prong Length: 30 mm



## Deltoid Retractor

*Fits easily under the acromion, deltoid and over the humeral head*

► Used in most open procedures

#### PRODUCT NO:

T1001  
Width: 30 mm  
Overall Length: 8" (20,3 cm)



## Humeral Head Retractor

*Placed between the glenoid and the humeral head to obtain excellent exposure*

#### PRODUCT NO:

T1007  
Blade Width: 33 mm  
Prong Width: 6 mm | 21 mm Gap | 6 mm  
Overall Length: 7" (17,8 cm)

MADE FOR INNOMED IN GERMANY



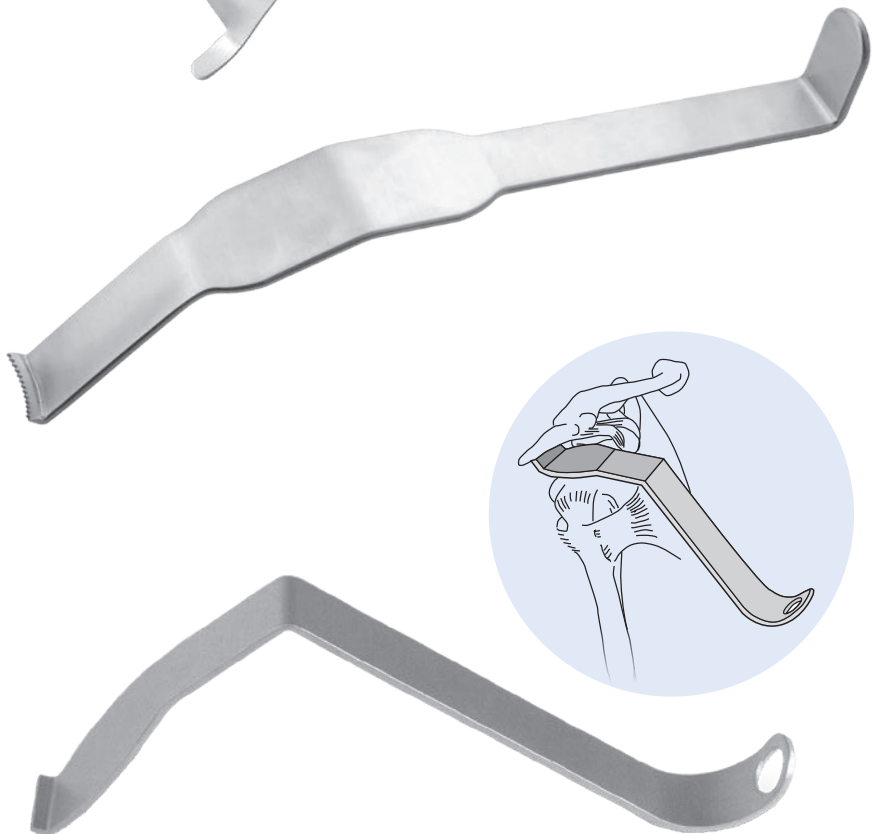
## Hope Retractor

Designed by Charles A. Hope, MD

*Useful in shoulder surgery*

#### PRODUCT NO:

5838  
Overall Length: 11" (27,9 cm)  
Blade Width: 1" (2,54 cm)



## Kirschenbaum Acromioplasty Retractor

Designed by Ira Kirschenbaum, MD

*Helps to protect both the posterior aspect of the shoulder and the articular surface of the humeral head during open acromioplasty and rotator cuff surgery*

Designed to fit under the posterior edge of the acromion and lever the humeral head down out of the way.

#### PRODUCT NO:

5840  
Overall Length: 9.25" (23,5 cm)  
Blade Width at Tip: 21 mm





## Posterior Glenoid Neck Retractor

*Used during osteotomy of the humeral head and approaches to the glenoid*

- ▶ Designed to allow one finger retraction
- ▶ Contours to allow teeth to fit behind the glenoid, retracting tissue for easy access to the glenoid

<b>PRODUCT NO:</b>
T1002
Width: 30 mm
Overall Length: 10" (25,4 cm)



## Anterior Glenoid Neck Retractor

*Teeth are specifically designed to retract the subscapularis and capsule medially during a Bankart procedure*

- ▶ The wide midsection retracts the soft tissue during anterior glenoid work
- ▶ The curved handle allows the assistant to use minimal pressure to achieve exposure

<b>PRODUCT NO:</b>
T1003
Width: 25 mm
Overall Length: 11" (27,9 cm)



## Goldstein Glenoid Neck Retractor

*Placed along the glenoid rim during open Bankart procedure to allow excellent exposure*

- ▶ The convex teeth sit easily into the glenoid rim while the strong end of the shaft allows the instrument to stay out of the surgeons view

<b>PRODUCT NO:</b>
T1004
Blade Width at Teeth: 18 mm
Blade Width at Widest: 36 mm
Overall Length: 8.5" (21,6 cm)



## Acromioplasty Retractor

*Designed to retract and protect the humeral head during resection of the inferior acromial surface*

The two prongs hook the posterior aspect of the acromion for retraction. The file is used to smooth rough edges of the acromion post-resection.

<b>PRODUCT NO:</b>
S3008
Overall Length: 9" (22,9 cm)
Blade Width: 18 mm



## Angled Glenoid Retractor

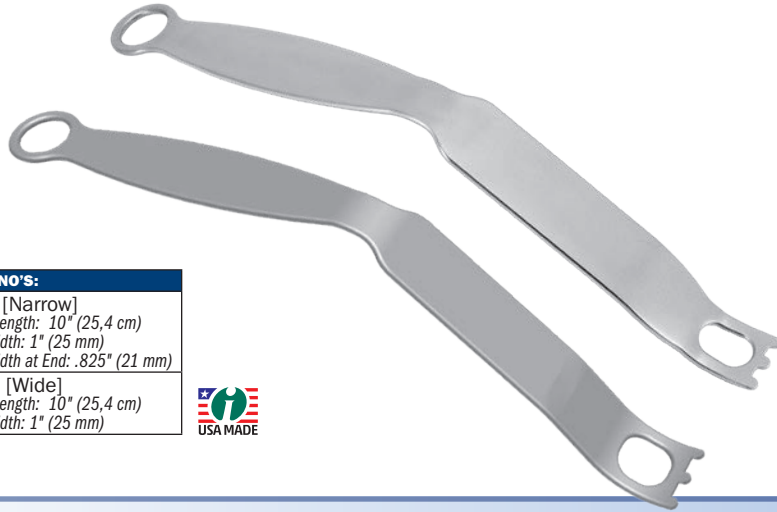
Designed by R.L. Stowell, MD

*Flared design allows for atraumatic placement circumferentially about the glenoid – superior, anterior and inferior – during open shoulder procedures for retraction of the subscapularis and capsule and to facilitate labral work*

### PRODUCT NO'S:

1901-N [Narrow]  
Overall Length: 10" (25,4 cm)  
Blade Width at End Tapers from: 1" to .4" (2,5 to 1 cm)

1901-W [Wide]  
Overall Length: 10" (25,4 cm)  
Blade Width at End Tapers from: 1" to .625" (2,5 to 1,6 cm)



### PRODUCT NO'S:

1902-N [Narrow]  
Overall Length: 10" (25,4 cm)  
Blade Width: 1" (25 mm)  
Blade Width at End: .825" (21 mm)

1902-W [Wide]  
Overall Length: 10" (25,4 cm)  
Blade Width: 1" (25 mm)



## Angled Glenoid Retractor – Forked

Designed by R.L. Stowell, MD

*Designed to help with exposure of the difficult glenoid and facilitation of glenosphere placement for reverse arthroplasty, with wide and narrow versions to accommodate most glenoid variations*

Specifically designed bend allows the retractor to sit along the posterior aspect and deliver the glenoid vault into the surgical field while retracting the humeral head posterior and lateral without excessive force on the glenoid neck, while the working end of the design allows reaming and peripheral bone removal without binding on the reamer.

## Burkhead Glenoid Retractor

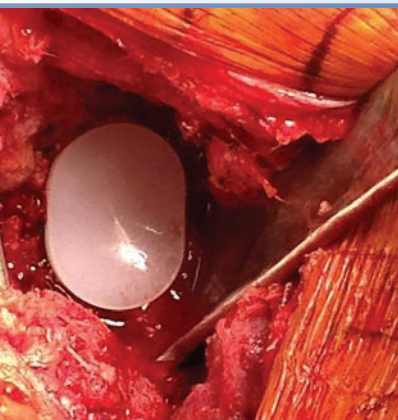
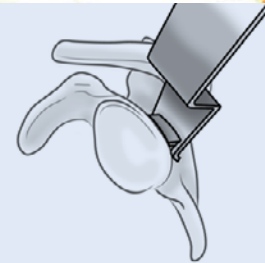
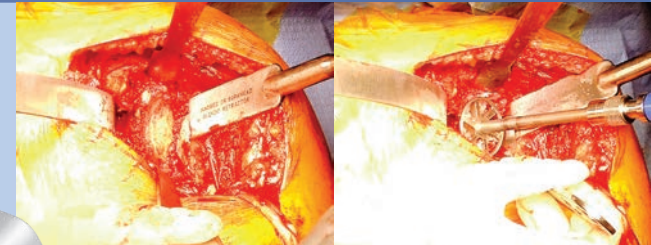
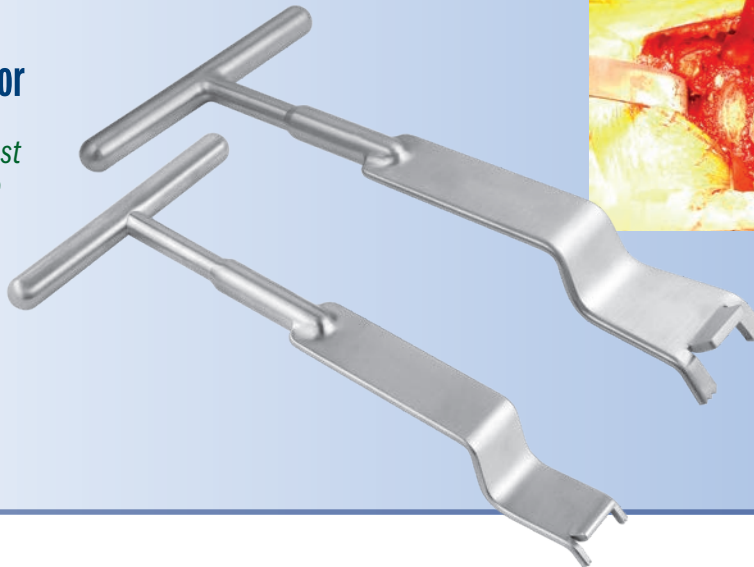
Designed by Wayne Burkhead, MD

*The retractor bar presses against the glenoid while the end of the retractor puts pressure on the posterior capsule*

### PRODUCT NO'S:

5839 [Large]  
Overall Length: 9.125" (23,2 cm)  
Blade Width at End: 1.5" (3,8 cm)

5839-SM [Small]  
Overall Length: 8.75" (22,2 cm)  
Blade Width at End: 1" (2,54 cm)



## George Semi-Circumferential Glenoid Retractor

Designed by Michael S. George, MD

*Designed to depress the humeral head and retract tissue away from the posterior half of the glenoid, helping to improve exposure for the preparation and placement of the glenoid component in total shoulder arthroplasty*



### PRODUCT NO:

2435  
Overall Length: 8" (20,3 cm)  
Blade Width: 2.125" (5,4 cm)

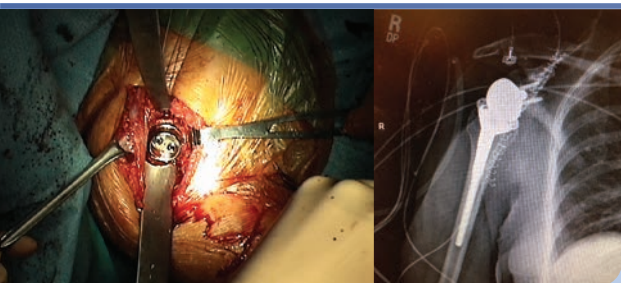
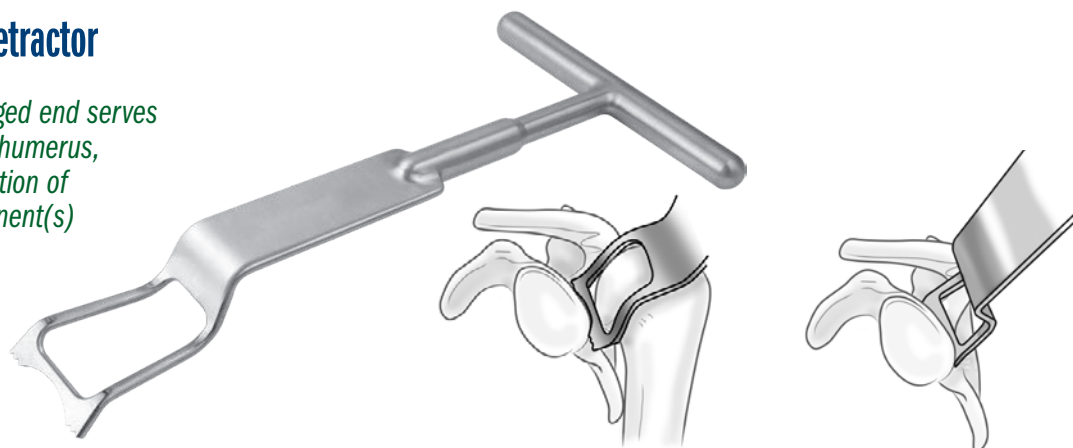


## Burkhead Reversible TSA/RSA Retractor

Designed by Wayne Burkhead, Jr, MD

*Unique shape, angles and double pronged end serves to push the posterior capsule, and the humerus, away from the glenoid to allow preparation of the glenoid and implantation of component(s) without having to remove the retractor*

**PRODUCT NO:**  
5839-01  
Overall Length: 9.125" (23,2 cm)  
Blade Width at End: 1.5" (3,8 cm)



*Designed for glenoid exposure, particularly for reverse shoulder replacement applications, where it is important to get inferiorly*

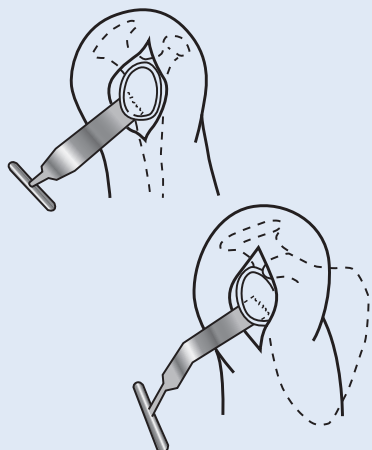
Allows visualization and direct access to the glenosphere base plate through a deltopectoral incision with intact pectoralis major insertion.

## Bacastow Glenoid Retractors

Designed by David Bacastow, MD



**PRODUCT NO'S:**  
1897-L [Left]  
Overall Length: 11.75" (29,8 cm)  
1897-R [Right]  
Overall Length: 11.75" (29,8 cm)



## Agrawal Talon Retractor

Designed by Vivek Agrawal, MD

*Designed to help facilitate glenoid exposure in total shoulder arthroplasty*

**PRODUCT NO:**  
4695  
Overall Length: 7.875" (20 cm)  
Blade Width: 40.7 mm



## Glenosphere Component Retractor

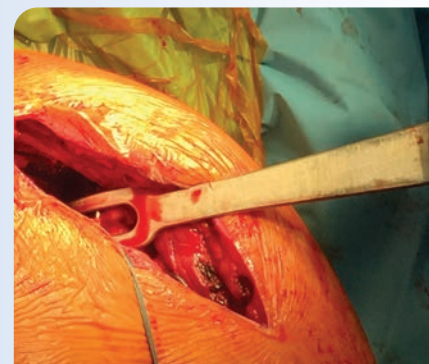
Designed by Tim Seachris

*Designed for use in total and reverse shoulder arthroplasty*

Coated version helps to protect component surfaces.



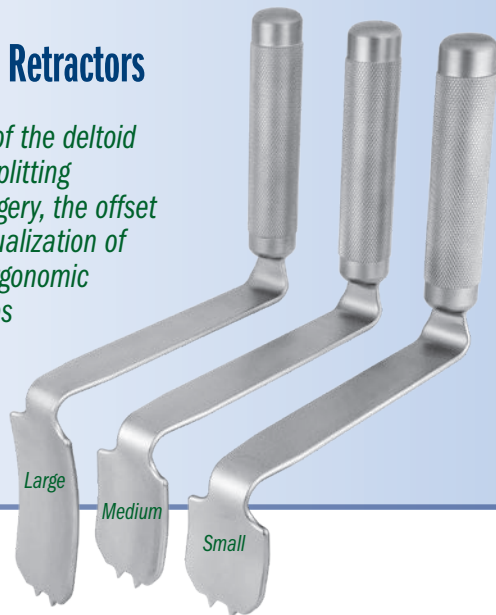
**PRODUCT NO:**  
5841 [Coated End]  
Overall Length: 10.25" (26,7 cm)  
Blade Width: .9375" (2,4 cm)  
5841-01 [Uncoated End]  
Overall Length: 10.25" (26,7 cm)  
Blade Width: .9375" (2,4 cm)



## Weatherly Mini-Deltoid Retractors

Designed by Wallace Weatherly, MD

Designed for the retraction of the deltoid in a mini-open mid-deltoid splitting approach to rotator cuff surgery, the offset handle helps allow clear visualization of the surgical field, and the ergonomic non-slip handle surface helps prevent fatigue in the operative team



Large

Medium

Small

### PRODUCT NO'S:

5110-L [Large]  
Overall Length: 12.75" (32,4 cm)  
Depth from Bend: 4.5" (11,4 cm)  
Blade Dimensions: 40 mm x 90 mm

5110-M [Medium]  
Overall Length: 11" (27,9 cm)  
Depth from Bend: 3" (7,6 cm)  
Blade Dimensions: 40 mm x 55 mm

5110-S [Small]  
Overall Length: 10.5" (26,7 cm)  
Depth from Bend: 2.5" (6,4 cm)  
Blade Dimensions: 40 mm x 40 mm



## Rake Retractors with Ergonomic Handle

Designed for general use soft tissue retraction



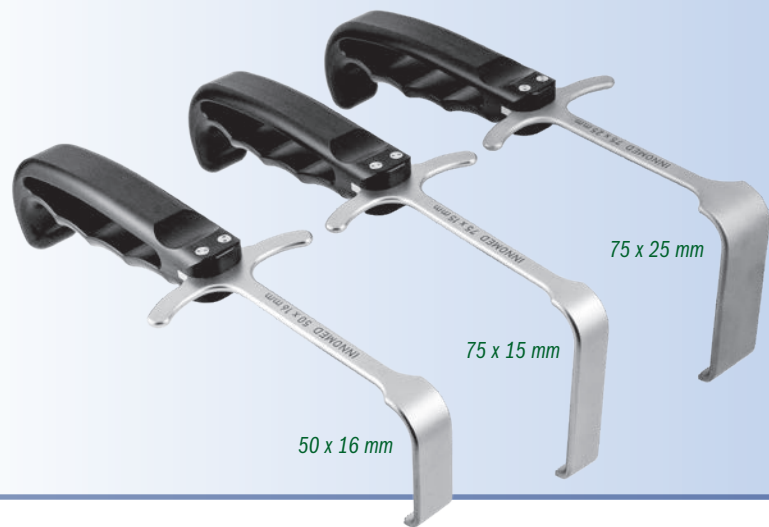
3-Prong

4-Prong

### PRODUCT NO'S:

4839 [3-Prong]  
Overall Length: 9.5" (24,1 cm)  
Rake Width: 13 mm  
Rake Depth: 14 mm

4840 [4-Prong]  
Overall Length: 9.5" (24,1 cm)  
Rake Width: 19 mm  
Rake Depth: 14 mm



75 x 25 mm

75 x 15 mm

50 x 16 mm

## Meyerding Type Retractors with Ergonomic Handle

Designed for general use soft tissue retraction, the ergonomic handle allows for a better grip and less fatigue

Non-glare finish featured on the metal retractor parts.



### PRODUCT NO'S:

6241 [50 x 16 mm]  
Overall Length: 8.875" (22,5 cm)  
Blade Width: 16 mm  
Blade Depth: 50 mm

6242 [75 x 15 mm]  
Overall Length: 9" (22,9 cm)  
Blade Width: 15 mm  
Blade Depth: 75 mm

6243 [75 x 25 mm]  
Overall Length: 9" (22,9 cm)  
Blade Width: 25 mm  
Blade Depth: 75 mm

## Chandler Retractor

Used for retracting tissue away from the bone

The handle is contoured away from the field of view and working area.

Available in three blade sizes: 5/8", 3/4", and 1".

Carbon fiber material is strong, lightweight, completely radiolucent, helps prevent from scratching component surfaces, and can be steam sterilized.



### PRODUCT NO'S:

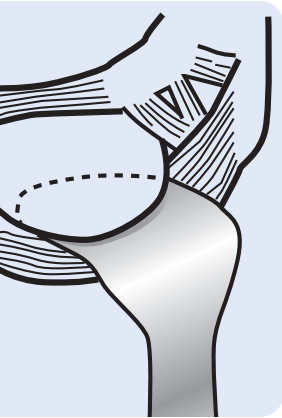
3220-01 [5/8"] (15,9 mm)  
Overall Length: 9.125" (23,5 cm)  
Blade Width: 16 mm

3220-02 [3/4"] (19 mm)  
Overall Length: 9.125" (23,5 cm)  
Blade Width: 19 mm

3220-04 [1"] (25,4 mm)  
Overall Length: 9.125" (23,5 cm)  
Blade Width: 25,4 mm

3220-02R\* [Radiolucent 3/4"] (19 mm)  
Overall Length: 9.125" (23,5 cm)  
Blade Width: 19 mm





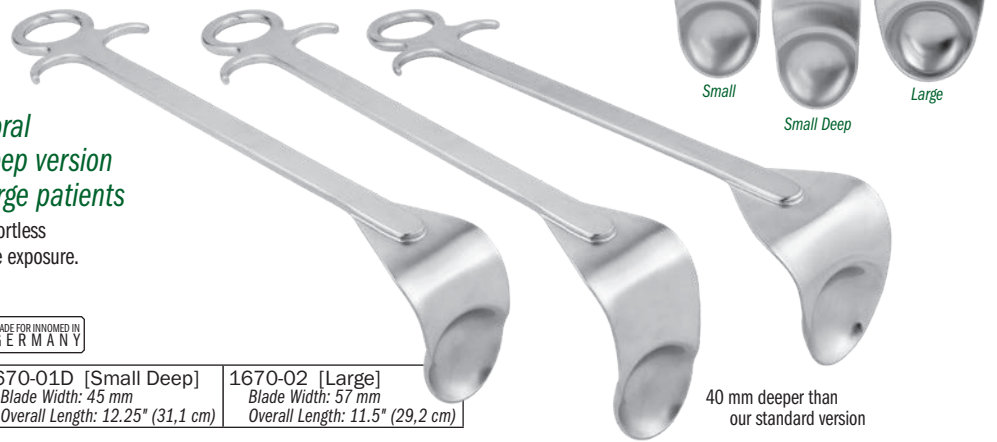
## Browne Deltoid Retractor

Used for the Delto-Pectoral Approach – the small deep version is designed for use in large patients

Contours the humeral head with effortless deltoid retraction allowing extensive exposure.

MADE FOR INNOVED IN GERMANY

PRODUCT NO'S:	1670-01 [Small]	1670-01D [Small Deep]	1670-02 [Large]
Blade Width:	45 mm	45 mm	57 mm
Overall Length:	11.5" (29,2 cm)	12.25" (31,1 cm)	11.5" (29,2 cm)



40 mm deeper than our standard version

## Kaminsky OrthoLucent™ Browne-type Deltoid Retractors

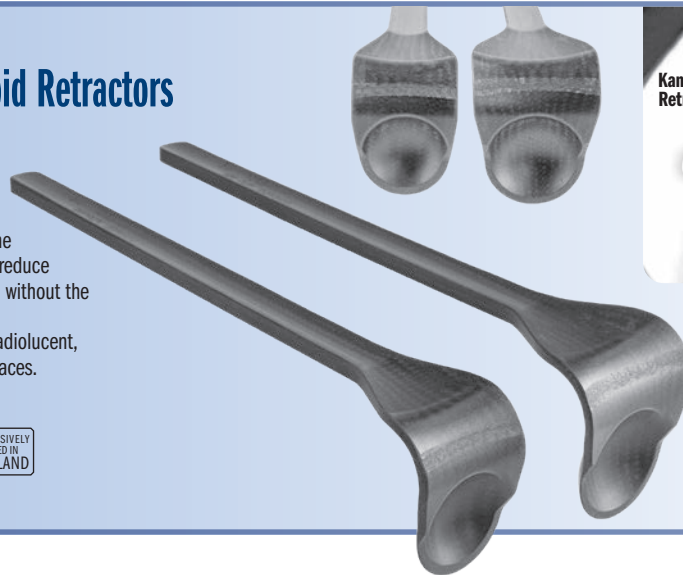
Used for the Delto-Pectoral Approach—can remain in place for fracture reduction, plate positioning, and screw/wire/drill location confirmation

Used for acromioplasty, rotator cuff repair, and fracture fixation. Contours the humeral head with deltoid retraction allowing extensive exposure. Helps to reduce operative time, assist in fracture reduction, and maintain hardware position without the frequent need for retractor removal and reintroduction.

Carbon fiber PEI composite material is strong, lightweight, completely radiolucent, can be steam sterilized, and helps to prevent from marring component surfaces.

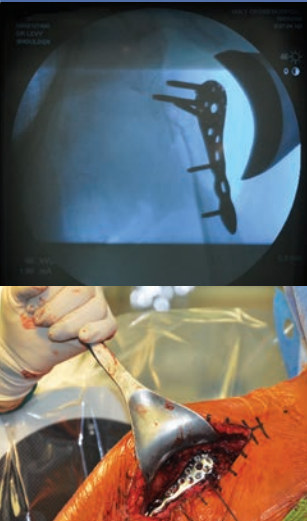
PRODUCT NO'S:	Designed by Sean B. Kaminsky, MD	
1670-01R [Small]	1670-02R [Large]	
Blade Width: 4,5 cm	Blade Width: 5,4 cm	
Overall Length: 10,5" (26,7 cm)	Overall Length: 10,5" (26,7 cm)	

MADE EXCLUSIVELY FOR INNOVED IN SWITZERLAND



Kaminsky Retractor

Completely radiolucent



## Levy Wide Deltoid Retractor

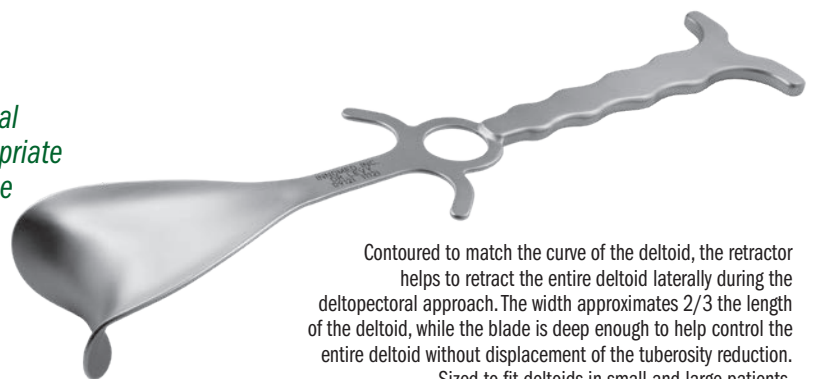
Designed by Jonathan Levy, MD

Designed for management of proximal humerus fractures—facilitates appropriate deltoid retraction without interference during active fluoroscopy

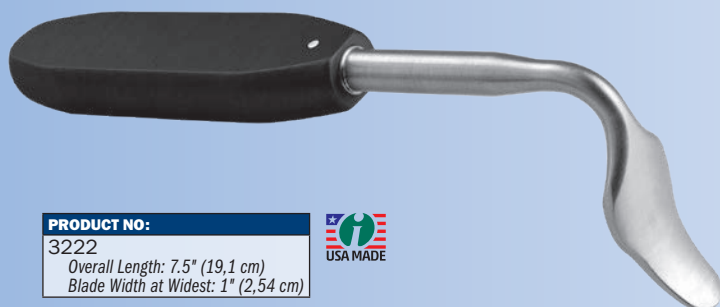
Patent Pending

PRODUCT NO:
1672
Overall Length: 11.75" (29,8 cm)
Blade at Widest: 2.5" (6,4 cm)
Blade Depth: 1.375" (3,5 cm)

MADE IN USA



Contoured to match the curve of the deltoid, the retractor helps to retract the entire deltoid laterally during the deltopectoral approach. The width approximates 2/3 the length of the deltoid, while the blade is deep enough to help control the entire deltoid without displacement of the tuberosity reduction. Sized to fit deltooids in small and large patients.



PRODUCT NO:
3222
Overall Length: 7.5" (19,1 cm)
Blade Width at Widest: 1" (2,54 cm)

MADE IN USA

## Bolanos Shoulder Retractor

Designed by Alberto Bolanos, MD

Designed for mini-open rotator cuff repairs and shoulder arthroplasty, the contour matches the humeral head and the rounded edge helps avoid trauma to surrounding musculature

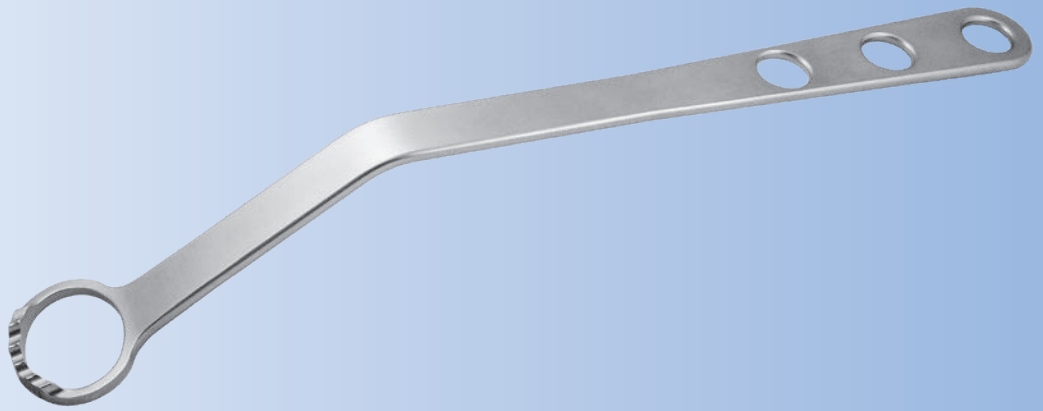
Depth matches girth of most patients, while the comfortable handle makes it easier for assistants to hold.

# Mehalik Posterior Glenoid Retractor with Long Handle

Designed in collaboration with Mayo Clinic, modified by John Mehalik, MD.

*Designed to help expose the posterior aspect of the glenoid*

<b>PRODUCT NO:</b>
1909
Overall Length: 13.2" (33,5 cm)
Access Hole Internal Diameter: 36 X 30 mm



# McFarland Shoulder V Retractor

Designed by Edward McFarland, MD

*Designed to provide deep access to the glenoid rim when performing a subscapularis splitting approach to the shoulder*

Fluted to enhance visualization and room when placing sutures in the capsular flaps prior to placing three prong retractors.

<b>PRODUCT NO:</b>
4851
Overall Length: 9" (22,9 cm)
Length To Bend: 8.5" (21,6 cm)
Handle Length: 4" (10,2 cm)
Blade Depth: 2.75" (7 cm)
Blade Width: .625" (1 cm)

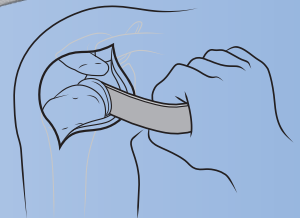
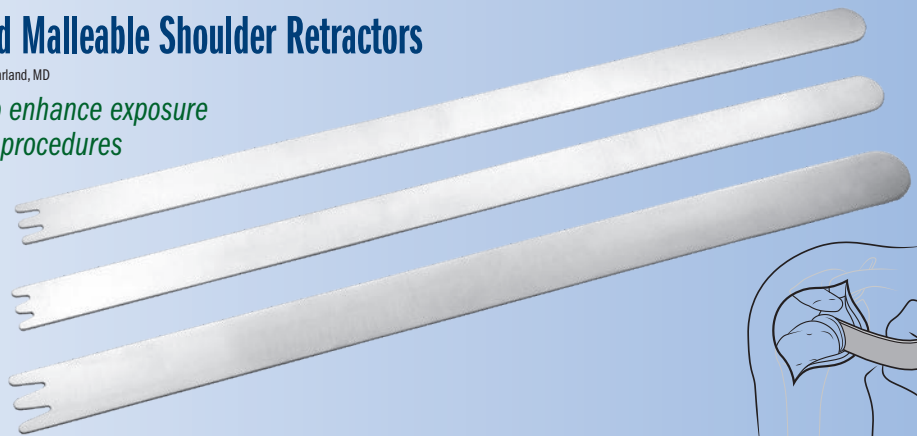


# McFarland Malleable Shoulder Retractors

Designed by Edward McFarland, MD

*Designed to enhance exposure in shoulder procedures*

<b>PRODUCT NO'S:</b>
4537-00 [Set of Three Sizes]
<b>Also available individually:</b>
4537-01 [Narrow Deep]
Overall Length: 15.5" (39,4 cm)
Prong Depth: 10 mm
4537-02 [Narrow Shallow]
Overall Length: 15.5" (39,4 cm)
Prong Depth: 6.8 mm
4537-03 [Wide]
Overall Length: 15.5" (39,4 cm)
Prong Depth: 13.5 mm



# McFarland Bent Cobb Elevator

Designed by Edward McFarland, MD

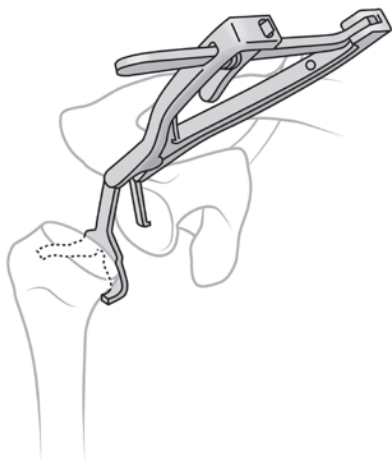
*Designed for retraction while helping to protect the axillary nerve in shoulder surgery*

Ultra hard titanium nitride coating helps to prolong sharpness.

<b>PRODUCT NO:</b>
3431
Overall Length: 9.5" (24,1 cm)
Length from Bend: 3.5" (8,9 cm)
Cobb End Width: .8" (20 mm)
Angle of Bend: 30°





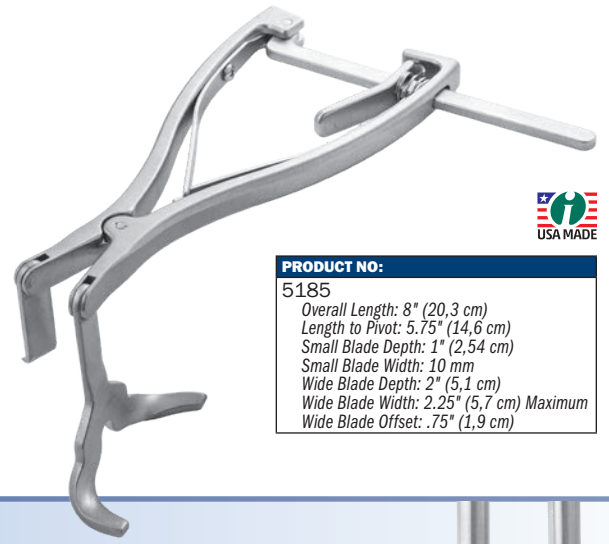


## Bacastow Shoulder Capsular Retractor

Designed by David Bacastow, MD

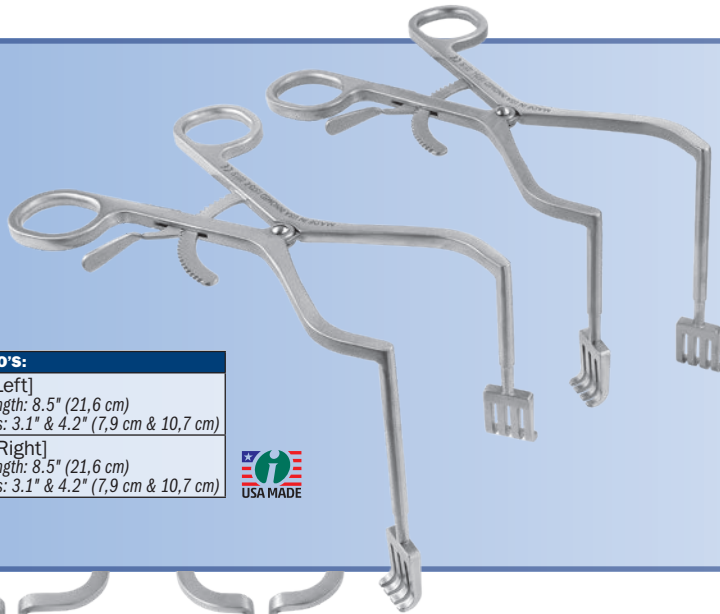
*Designed to help place tension on the inferior capsule for improved visualization and dissection when performing anatomic or reverse shoulder replacement*

Rotating arms allow left or right use. Can be used in conjunction with Axillary Nerve Retractor with Suction (#8739 - Page 4) for additional safety.



### PRODUCT NO'S:

5185  
 Overall Length: 8" (20,3 cm)  
 Length to Pivot: 5.75" (14,6 cm)  
 Small Blade Depth: 1" (2,54 cm)  
 Small Blade Width: 10 mm  
 Wide Blade Depth: 2" (5,1 cm)  
 Wide Blade Width: 2.25" (5,7 cm) Maximum  
 Wide Blade Offset: .75" (1,9 cm)



## Durham Offset Zelpi Retractor

Designed by Alfred Durham, MD

*Staggered depth retractor designed for exposure during total hip and total shoulder surgery*

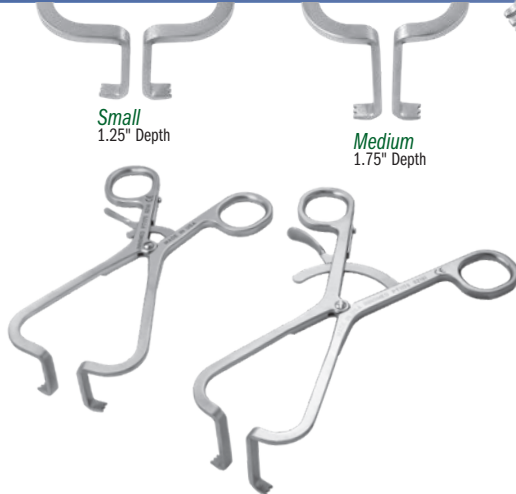
- ▶ In hip surgery, with the handle towards the surgeon, the longer leg is on the inside
- ▶ In shoulder surgery, with the handle downward, the longer leg is on the outside
- ▶ The longer leg extends 1.1" (2,8 cm) deeper



### PRODUCT NO'S:

1573-L [Left]  
 Overall Length: 8.5" (21,6 cm)  
 Leg Depths: 3.1" & 4.2" (7,9 cm & 10,7 cm)

1573-R [Right]  
 Overall Length: 8.5" (21,6 cm)  
 Leg Depths: 3.1" & 4.2" (7,9 cm & 10,7 cm)



Small  
1.25" Depth

Medium  
1.75" Depth

## Flat Gelpi Retractors

*Designed to help retract a broader area of soft tissue or muscle*

### PRODUCT NO'S:

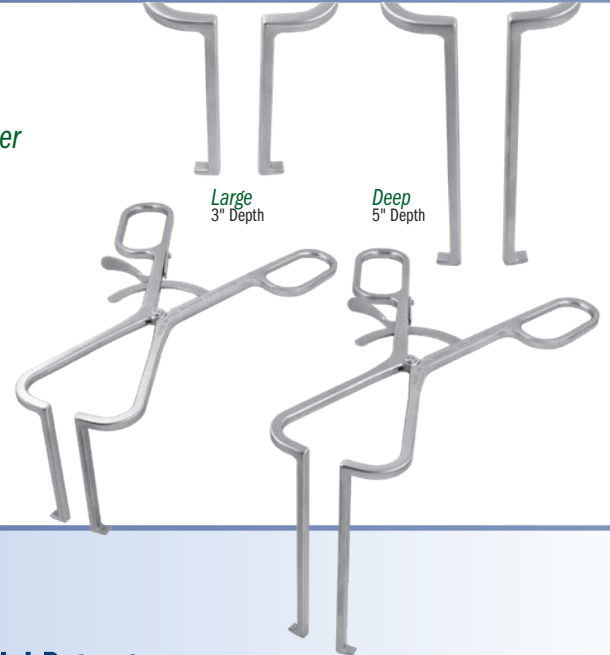
4191 [Small]  
 Overall Length: 6.5" (16,5 cm)  
 Prong Depth: 1.25" (3,2 cm)

4192 [Medium]  
 Overall Length: 7.25" (18,4 cm)  
 Prong Depth: 1.75" (4,4 cm)

4193 [Large]  
 Overall Length: 9" (22,9 cm)  
 Prong Depth: 3" (7,6 cm)

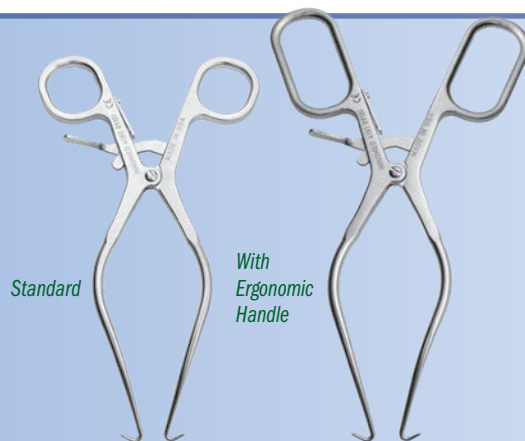
4194 [Deep]  
 Overall Length: 10" (24,4 cm)  
 Prong Depth: 5" (12,7 cm)

The two largest sizes feature an ergonomic handle for increased comfort and control.



Large  
3" Depth

Deep  
5" Depth



Standard

With Ergonomic Handle

## Gelpi Retractors

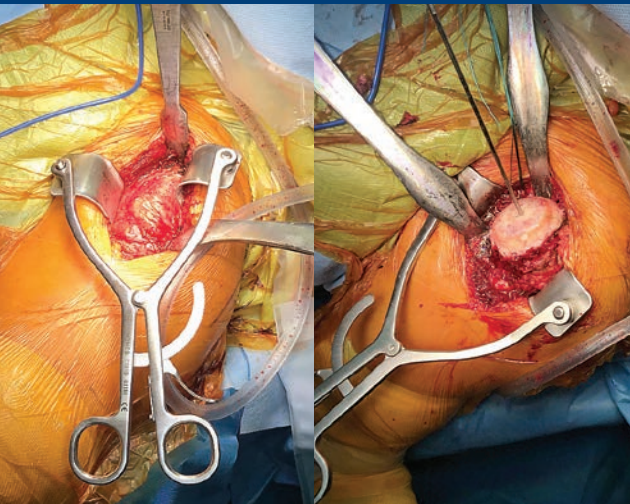
### PRODUCT NO'S:

4180 [Standard]  
 Overall Length: 7.75" (19,7 cm)

4181 [With Ergonomic Handle]  
 Overall Length: 8.75" (22,2 cm)



# Kolbel Self-Retaining Glenoid Retractors



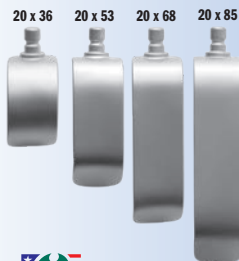
## Kolbel Self-Retaining Retractor Blades



### Radiolucent Blades

The OrthoLucent™ carbon fiber PEEK blade is strong, lightweight, completely radiolucent, helps to prevent from marring component surfaces, and can be steam sterilized.

PRODUCT NO'S:	
<b>Wide Blades</b>	
T1018	[36 x 36 mm]
T1019	[36 x 53 mm]
T1020	[36 x 68 mm]
T1021	[36 x 85 mm]
<b>Radiolucent Blade</b>	
T1019-R	[36 x 53 mm]

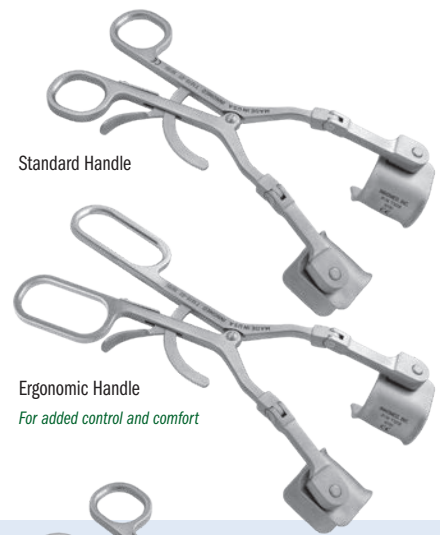


Narrow Blades	
T1022	[20 x 36 mm]
T1023	[20 x 53 mm]
T1024	[20 x 68 mm]
T1025	[20 x 85 mm]

## Modified Kolbel Self-Retaining Glenoid Retractor with Hinge

Two pairs of snap-in, freely pivoting blades included.

PRODUCT NO'S:	
T1014-01	[Set - Standard Handle]
T1014-01-2F	[Set - Ergonomic Handle]
<b>Set Includes:</b>	
T1015-01	[Retractor - Standard Handle] Overall Length: 8.25" (21 cm) Length-to-hinge: 6" (15,2 cm) Arm Length: 2.25 (5,7 cm)
- OR -	
T1015-01-2F	[Retractor - Ergonomic Handle] Overall Length: 9.25" (23,5 cm) Length-to-hinge: 7" (17,8 cm) Arm Length: 2.25 (5,7 cm)
T1018-P	[Blades-Pair] 36 mm X 36 mm
T1019-P	[Blades-Pair] 36 mm X 53 mm



Standard Handle

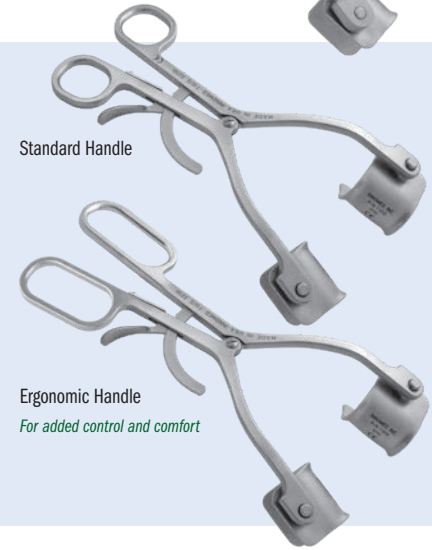
Ergonomic Handle

For added control and comfort

## Kolbel Self-Retaining Glenoid Retractor

Two pairs of snap-in, freely pivoting blades included.

PRODUCT NO'S:	
T1014	[Set - Standard Handle]
T1014-2F	[Set - Ergonomic Handle]
<b>Set Includes:</b>	
T1015	[Retractor - Standard Handle] Overall Length: 8.25" (21 cm)
- OR -	
T1015-2F	[Retractor - Ergonomic Handle] Overall Length: 9.25" (23,5 cm)
T1018-P	[Blades-Pair] 36 mm X 36 mm
T1019-P	[Blades-Pair] 36 mm X 53 mm



Standard Handle

Ergonomic Handle

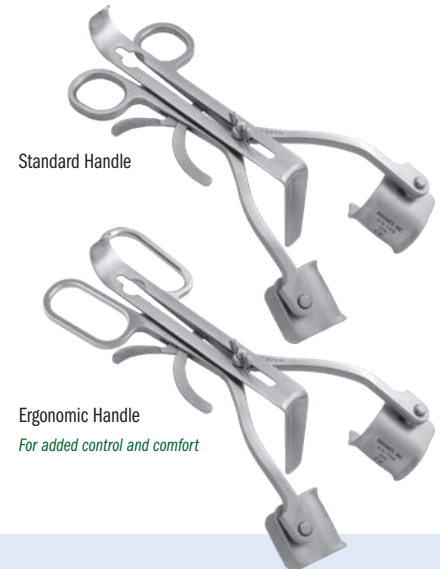
For added control and comfort

## Kolbel Self-Retaining Glenoid Retractor with Center Blade

Center blade can be reversed for shallow or deep retraction

Two pairs of snap-in, freely pivoting blades included.

PRODUCT NO'S:	
T1050	[Set - Standard Handle]
T1050-2F	[Set - Ergonomic Handle]
<b>Set Includes:</b>	
T1050-01	[Retractor - Standard Handle] Overall Length: 8" (20,3 cm)
- OR -	
T1050-01-2F	[Retractor - Ergonomic Handle] Overall Length: 9" (22,9 cm)
T1050-02	[Center Blade] Length-to-bend: 6.25" (15,9 cm) Depth: 2.5" (6,4 cm)
T1018-P	[Blades-Pair] 36 mm X 36 mm
T1019-P	[Blades-Pair] 36 mm X 53 mm



Standard Handle

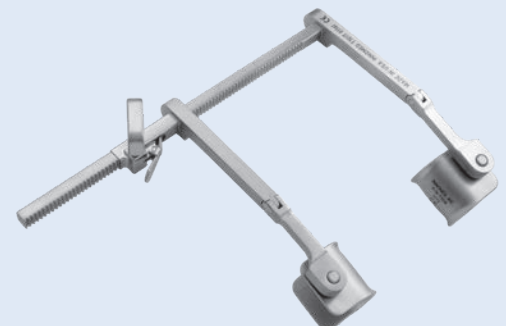
Ergonomic Handle

For added control and comfort

## Kolbel Self-Retaining Retractor

Two pairs of snap-in, freely pivoting blades included.

PRODUCT NO'S:	
T1016	[Set]
<b>Set Includes:</b>	
T1017	[Retractor] Overall Length: 8.25" (21 cm) Arm Length: 6.125" (15,6 cm) Arm Length-to-hinge: 3" (7,6 cm)
T1018-P	[Blades-Pair] 36 mm X 36 mm
T1019-P	[Blades-Pair] 36 mm X 53 mm



MADE EXCLUSIVELY FOR INNOMED IN SWITZERLAND

Two pairs of snap-in, freely pivoting blades included.

PRODUCT NO'S:	
T1016-01	[Set]
Set Includes:	
T1016-01-2F	[Retractor]
Overall Length: 9.25" (23,5 cm)	
Length-to-hinge: 7" (17,8 cm)	
Arm Length: 2.25 (5,7 cm)	
T1018-P	[Blades-Pair] 36 mm X 36 mm
T1019-P	[Blades-Pair] 36 mm X 53 mm

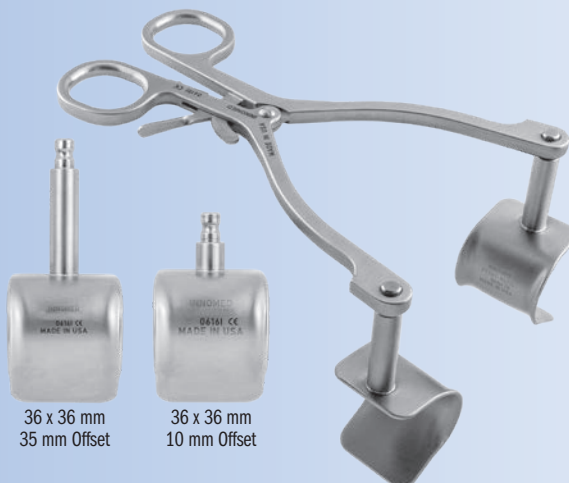


## Kolbel Self-Retaining Glenoid Retractor with Hinge and Double Ergonomic Handle

## Durham Offset Kolbel Shoulder Retractor Set

Designed for retraction of the deltoid and under the short head of the biceps muscle to expose the shoulder, the longer offset blades are useful in patients with large muscles, and the shorter offset blades are useful in smaller elderly patients

Snap-in, freely pivoting smooth curved blades help to concentrate the forces on the center of the muscle bellies, allowing the retractor to remain centered and not get in the way of exposure.

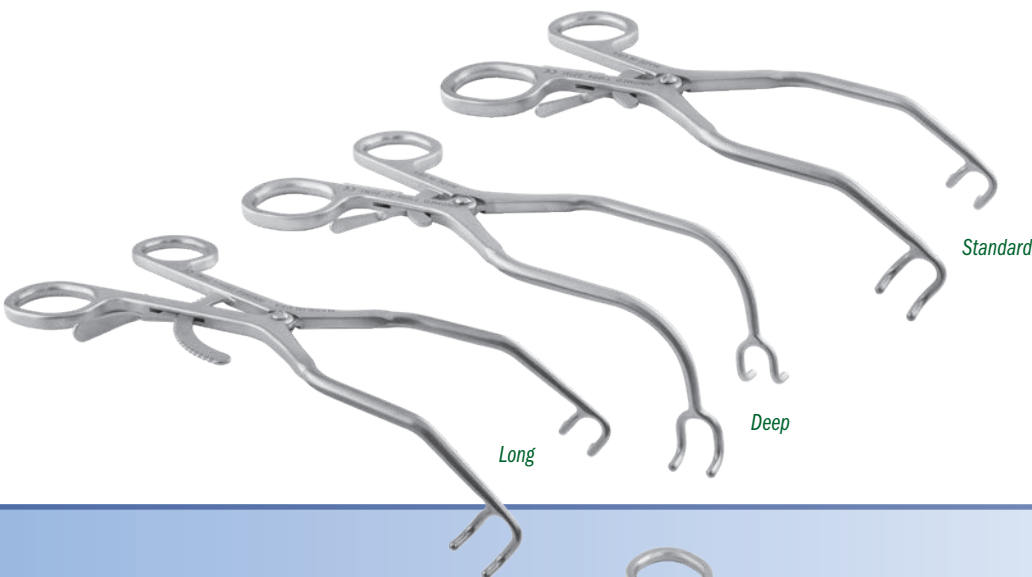


36 x 36 mm  
35 mm Offset

36 x 36 mm  
10 mm Offset

PRODUCT NO'S:	
T1030	[Set]
Set includes: (1) T1030-01, (2) T1030-L, (2) T1030-S	
Also available individually:	
T1030-01	[Retractor Handle]
Overall Length: 7" (17,8 cm)	
T1030-L	[Long Offset Blade]
(2) included in set, (1) only with this product number	
Offset Length: 35 mm	
Blade Dimensions: 36 x 36 mm	
T1030-S	[Short Offset Blade]
(2) included in set, (1) only with this product number	
Offset Length: 10 mm	
Blade Dimensions: 36 x 36 mm	

Designed by Alfred A. Durham, MD



Long

Deep

Standard

## Kolbel Soft Tissue Retractors

Helps in the early phase to retract soft tissue comprising of the gleno-humeral joint

Use facilitates the introduction of deeper retractors which are required for sufficient visibility of the glenoid, acromion and rotator cuff.

PRODUCT NO'S:	
T1006	[Standard]
Overall Length: 8" (20,3 cm)	
T1006-01	[Deep]
Overall Length: 7.5" (19,1 cm)	
T1006-L	[Long]
Overall Length: 8.5" (21,6 cm)	

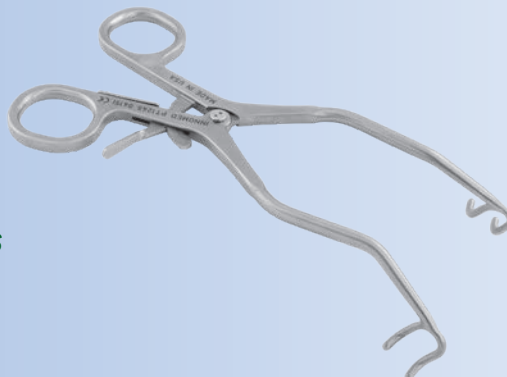


## Havens Modified Kolbel Soft Tissue Retractor

Designed by Philip Havens, MD

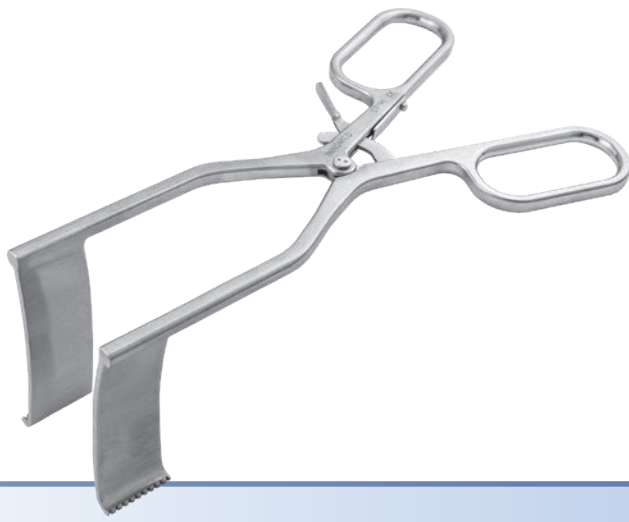
Designed for retraction on deltoid split incisions on mini-open rotator cuff repairs

Jaws and arms are parallel with no gap when closed to allow easier insertion in tight spaces.



PRODUCT NO:	
T1006-02	
Overall Length: 7.5" (19,1 cm)	
Opens To: 4.5" (11,4 cm)	
Prong Depth: 18 mm	





## Deep Meyerding Retractor with Ergonomic Handle

A self-retaining soft tissue retractor for use in hip, knee, and shoulder surgery

**PRODUCT NO:**  
6244  
Overall Length: 8.5" (21,6 cm)  
Blade Depth: 3.5" (8,9 cm)  
Blade Width: 1" (2,54 cm)

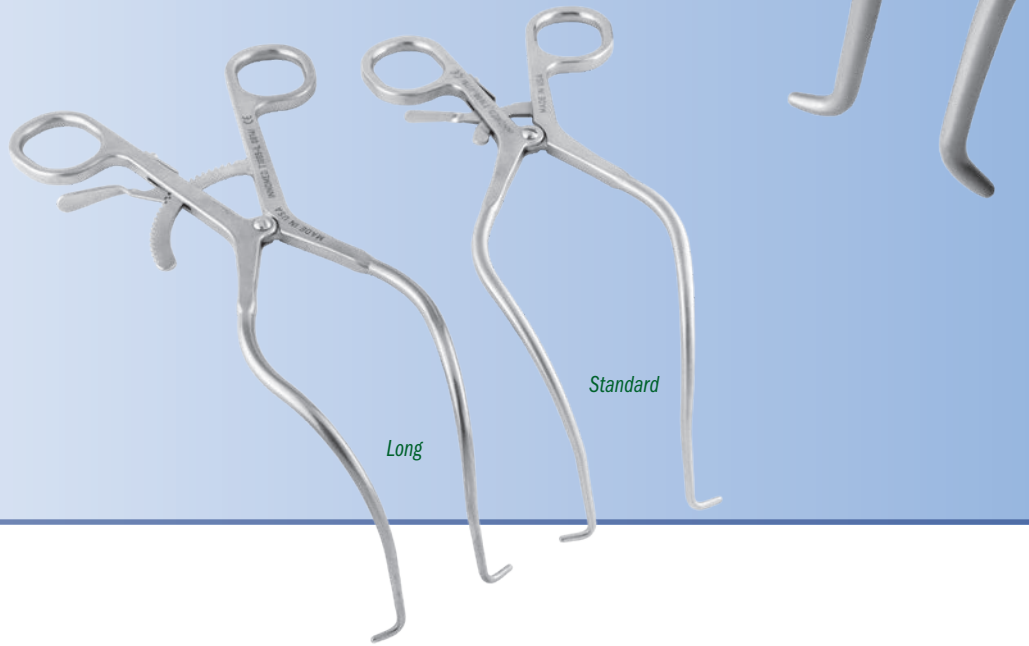
MADE EXCLUSIVELY  
FOR INNOMED IN  
GERMANY

## Subscapularis Spreader

Reaches deep to help split the subscapularis in a Jobe approach

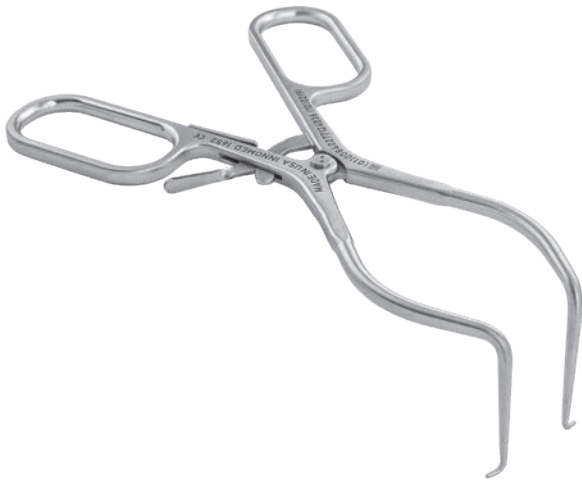
Also used for retracting a split deltoid in mini rotator cuff repairs.

**PRODUCT NO'S:**  
T1005 [Standard]  
Overall Length: 8.375" (21,3 cm)  
T1005-L [Long]  
Overall Length: 9.25" (23,5 cm)



Long

Standard



## Right Angled Subscapular Spreader - Blunt Tips

Designed by Edward McFarland, MD

Designed to hold the subscapularis muscle open when performing a subscapularis split approach to the glenoid

**PRODUCT NO:**  
1652  
Overall Length: 7.5" (19,1 cm)  
Blade Depth: 2" (5,1 cm)



## Humeral Protection Plates

Designed by Ronald E. Delanois, MD

Helps protect the proximal humerus from fracture after humeral head osteotomy

Plate is placed on the proximal humerus after the initial osteotomy of the humeral head for total shoulder replacement. Helps protect the proximal humerus from fracture as the humerus is retracted to gain visualization of the glenoid to prepare it for a glenoid implant.

50 mm  
Spiked Bottom



50MM  
INNOMED: 5259-02  
L#1213MT C€

50 mm  
Flat Top



46 mm  
Spiked Bottom



46MM  
INNOMED: 5259-01  
L#1213MT C€

46 mm  
Flat Top



**PRODUCT NO'S:**  
5259-01 [46 mm]  
5259-02 [50 mm]



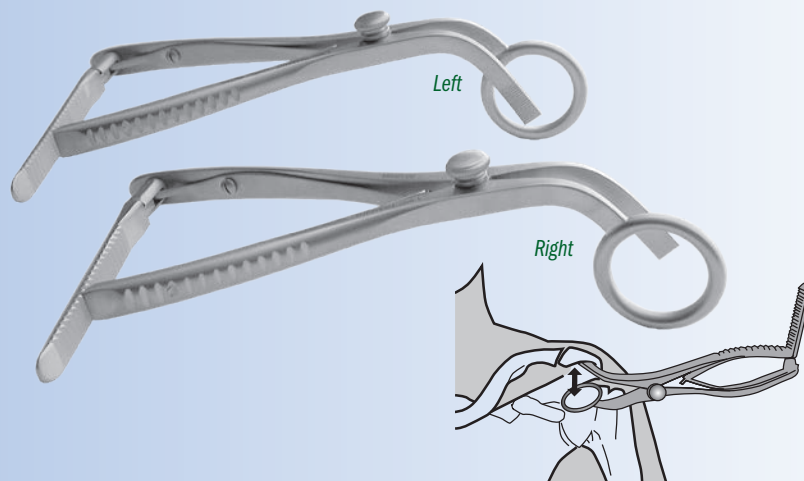
## Gerber Sub-Acromion Spreaders

Designed to gain optimal access to the subacromion space

Designed to gain optimal access to the subacromion space by distracting inferiorly the humeral head from the acromion.

PRODUCT NO'S:	
Standard	Modified
1640-01 [Right] Blade Length: 19 mm Inside Ring Dia.: 32 mm Overall Length: 7" (17,8 cm)	1641-01 [Right] Blade Length: 34 mm Inside Ring Dia.: 25 mm Overall Length: 7" (17,8 cm)
1640-02 [Left] Blade Length: 19 mm Inside Ring Dia.: 32 mm Overall Length: 7" (17,8 cm)	1641-02 [Left] Blade Length: 34 mm Inside Ring Dia.: 25 mm Overall Length: 7" (17,8 cm)

MADE EXCLUSIVELY FOR INNOVED IN GERMANY



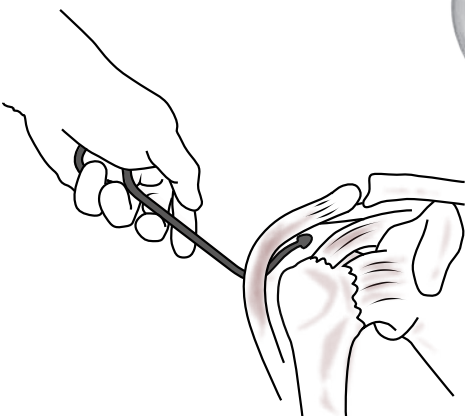
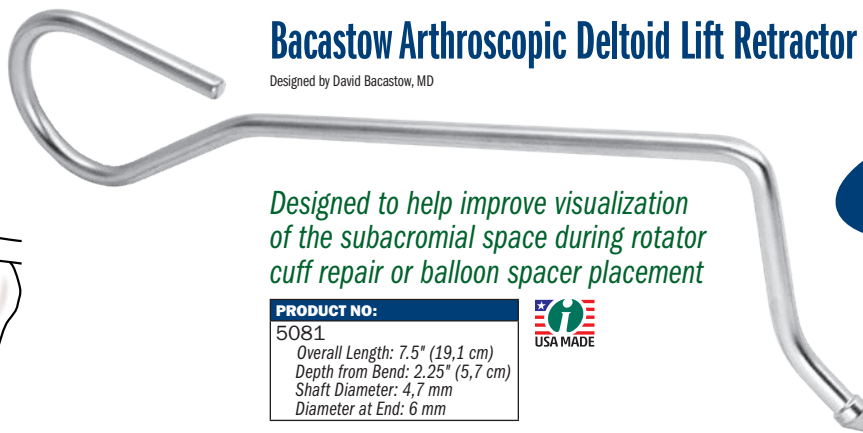
## Bacastow Arthroscopic Deltoid Lift Retractor

Designed by David Bacastow, MD

Designed to help improve visualization of the subacromial space during rotator cuff repair or balloon spacer placement

**New!**

PRODUCT NO:
5081
Overall Length: 7.5" (19,1 cm)
Depth from Bend: 2.25" (5,7 cm)
Shaft Diameter: 4,7 mm
Diameter at End: 6 mm

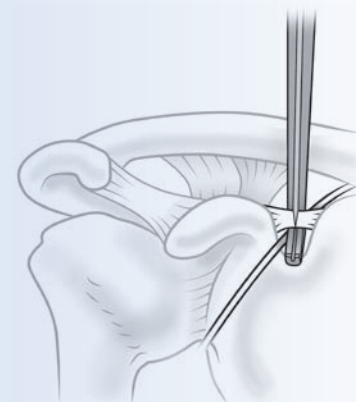
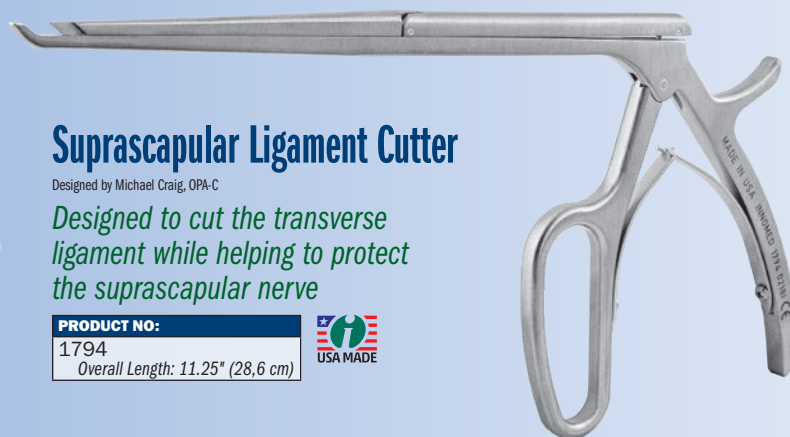


## Suprascapular Ligament Cutter

Designed by Michael Craig, OPA-C

Designed to cut the transverse ligament while helping to protect the suprascapular nerve

PRODUCT NO:
1794
Overall Length: 11.25" (28,6 cm)



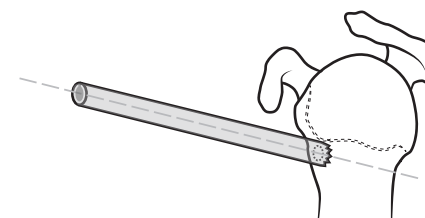
## Argintar Biceps Tenodesis Sleeve

Designed by Evan Argintar, MD

Designed to help facilitate mini-open sub-pectoral biceps tenodesis—by maintaining the trajectory of the drill with the serrated end of the sleeve, the drilled humeral holes are easily found with standard percutaneous placement of the bicortical button

Once flipped, the slotted cut out in the sleeve makes detachment of the button applicator possible, helping with efficient and reproducible mini-open biceps tenodesis using button technique.

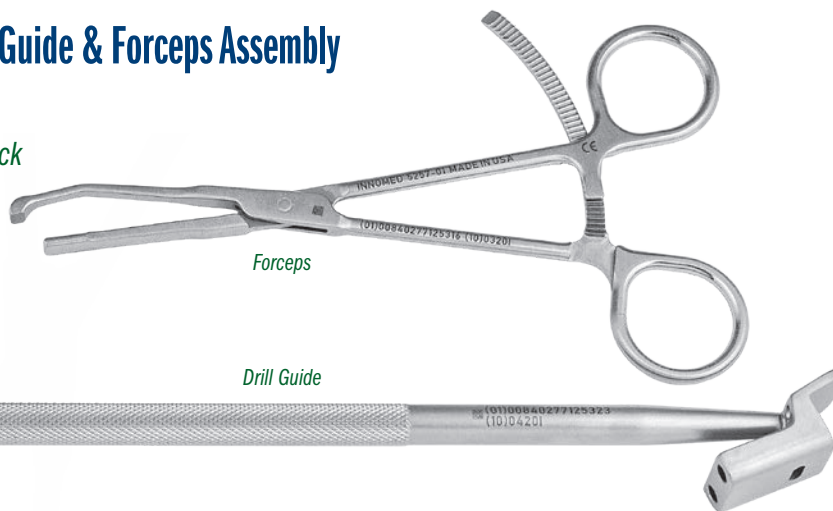
PRODUCT NO:
5835
Overall Length: 4" (10,2 cm)
External Diameter: 6,35 mm
Internal Diameter: 5 mm
Slot: 2,75 mm



# Meyer Latarjet Drill Guide & Forceps Assembly

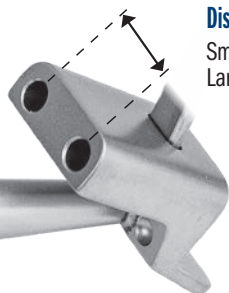
Designed by Professor Dominik Meyer

*Aiming device for flush positioning of a bone block with a joint surface*



Forceps

Drill Guide



**Distance between Drill Holes:**

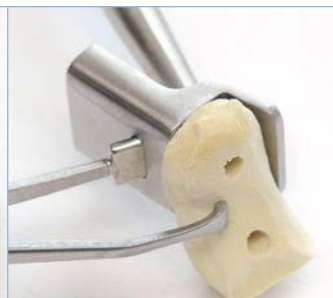
Small = .390" (9,9 mm)

Large = .492" (12,5 mm)

PRODUCT NO'S:	
SMALL SET	LARGE SET
5257-00 [Small Set]	5258-00 [Large Set]
Set Includes:	Set Includes:
5257-01 [Latarjet Forceps, Small] Overall Length: 5.875" (14,9 cm) Tongue and Clamp Arm Width: .22" (5.6 mm)	5258-01 [Latarjet Forceps, Large] Overall Length: 5.875" (14,9 cm) Tongue and Clamp Arm Width: .32" (8.15 mm)
5257-02 [Latarjet Drill Guide, Small] Overall Length: 8.5" (21,6 cm) Drill Hole Diameter: 3.5 mm Distance between Drill Holes: .390" (9,9 mm)	5258-02 [Latarjet Drill Guide, Large] Overall Length: 8.5" (21,6 cm) Drill Hole Diameter: 3.5 mm Distance between Drill Holes: .492" (12,5 mm)
1025 [Case]	1025 [Case]



Set in Case



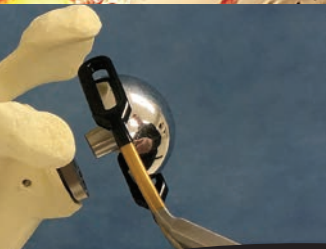
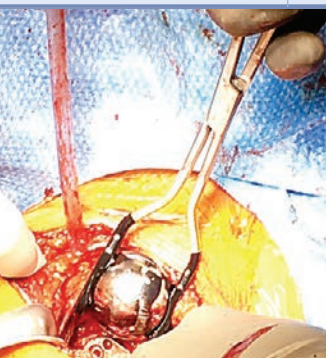
The osteotomized coracoid is fixed with the lateral, joint-facing side of the coracoid (where the ligament is) facing the flange of the drill-guide.

Two 3.5 mm guiding holes are drilled.

The drill guide is held against the antero-inferior glenoid, the flange sitting on the cartilage, and the first 2.5 mm thread hole for screw fixation is drilled.

The second 2.5 mm thread hole is drilled parallel to a 2.5 mm pin that has been inserted in the first hole to ensure correct distance and orientation.

The coracoid is now fixated using two 3.5 mm or 4.5 mm screws flush with the cartilage, due to the identical distance between flange and screw holes on coracoid and glenoid.

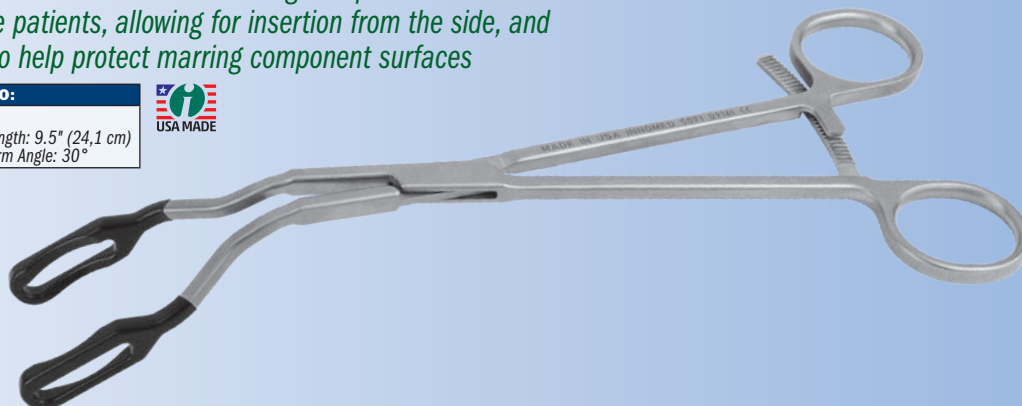


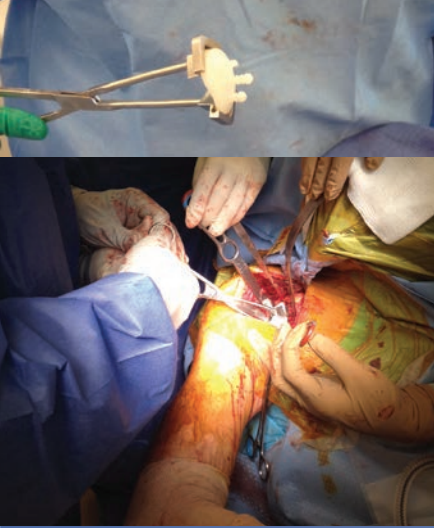
# Coated Inserter for Reverse Shoulder Glenosphere Components

Designed by Michael Radon, Ilya Voloshin, MD, and Nathan Mineo

*Designed to aid in the insertion of glenospheres in limited exposure patients, allowing for insertion from the side, and coated to help protect marring component surfaces*

PRODUCT NO:
5071
Overall Length: 9.5" (24,1 cm)
Inserter Arm Angle: 30°





## Burkhead Glenoid Inserter

Designed by Wayne Burkhead, Jr, MD, Michael Radon, and Aaron Merges

*Designed to help insert a glenoid component*

**PRODUCT NO:**  
4689  
Overall Length: 9.875" (25,1 cm)

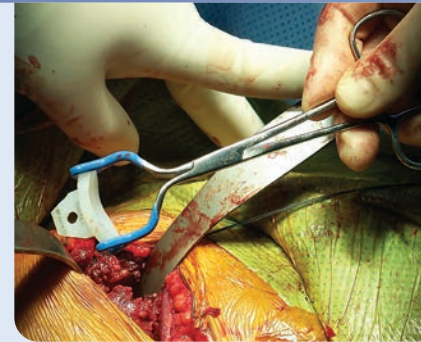


## Glenoid Inserter

Designed by Chase Kuhn & J. Kevin Rudder, MD

*Designed for final implantation of the glenoid prosthesis into the body*

Grasping ends are coated to help protect from scratching the component surfaces.



**PRODUCT NO:**  
5076  
Overall Length: 8.5" (21,6 cm)

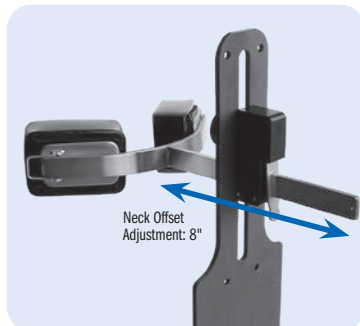


## Nicholson Headrest

Designed by Gregory Nicholson, MD

*Helps position the patient for all types of shoulder surgery in the beachchair position*

Designed to provide excellent exposure to the shoulder, the headrest can be used with standard OR tables (with no modifications to the table). The headrest provides patient support and helps position the patient for all types of shoulder surgery—arthroscopic and open—in the beachchair position. It can be quickly placed and adjusted.



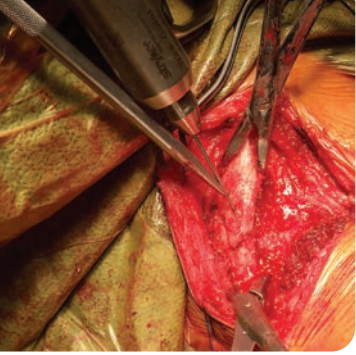
A gel pad forehead strap with velcro is included for optional use.

**PRODUCT NO'S:**  
2450 [Headrest]  
Main Plate Dimensions: 6" x 18" (15,2 x 45,7 cm)  
Neck Offset Adjustment: 8" (20,3 cm)  
Includes/Replacement Parts:  
2450-S [Strap with Gel Pad]  
4150-PD2 [Set of 2 Pads]



*Provides excellent exposure to the shoulder, and patient support*

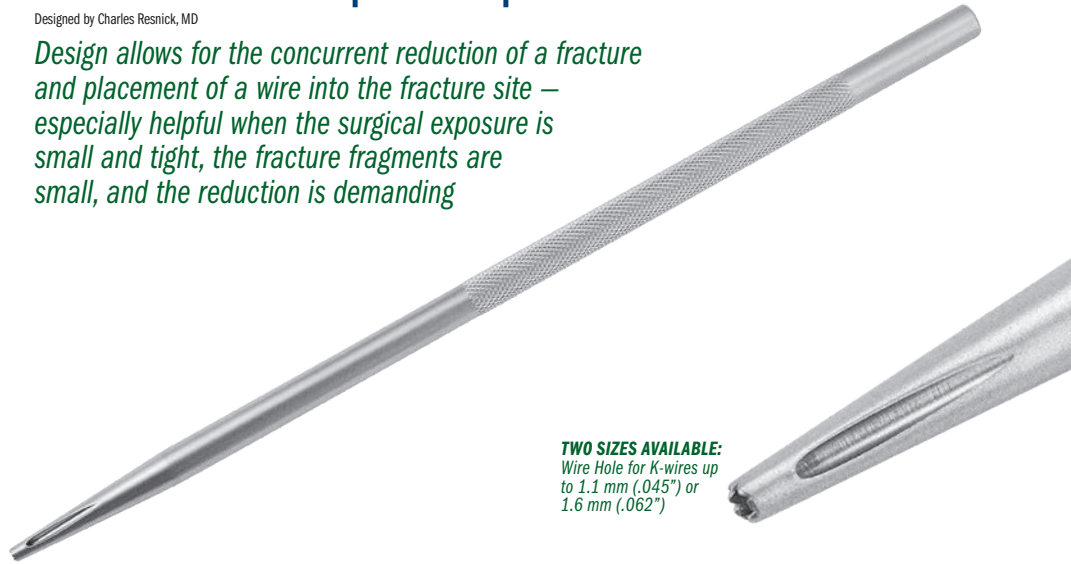
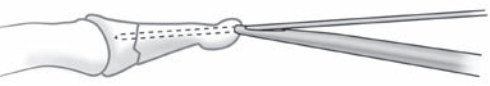




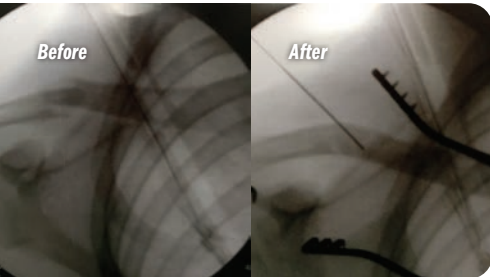
## Resnick Small Bone Tamp with Oblique K-Wire Hole

Designed by Charles Resnick, MD

*Design allows for the concurrent reduction of a fracture and placement of a wire into the fracture site – especially helpful when the surgical exposure is small and tight, the fracture fragments are small, and the reduction is demanding*



**TWO SIZES AVAILABLE:**  
Wire Hole for K-wires up to 1.1 mm (.045") or 1.6 mm (.062")



- ▶ The serrated distal end minimizes slippage on the cortical surface, does not interfere with the placement of the guidewire and allows for subsequent surgeon-decided, intraoperative angulation of the wiring once the first cortex is drilled
- ▶ Especially useful in fractures where there is involvement of an articular surface, for example, mallet fractures of the distal phalanx, articular fractures that involve ligamentous attachments or tendon attachments of the phalanges, scaphoid pole small fracture fragments or other small carpal fractures, and radial styloid fractures



PRODUCT NO'S:	
5294 [1.1 mm Hole]	Wire Hole for: 1.1 mm (.045") K-wire Overall Length: 7.5" (19.1 cm) Shaft Diameter: 6.3 mm End Diameter: 2.5 mm
5294-01 [1.6 mm Hole]	Wire Hole for: 1.6 mm (.062") K-wire Overall Length: 7.5" (19.1 cm) Shaft Diameter: 6.3 mm End Diameter: 2.5 mm

## Stanton Nail/Screw Drill Guide Assembly FOR DISTAL HUMERAL, FEMORAL, OR TIBIAL SCREWS

Designed by John L. Stanton, MD

*Designed to help hold and stabilize a drill guide, allowing the surgeon to obtain 'perfect circles' and drill distal locking screw holes without exposure of the hand to the x-ray beam*

The drill guide is placed over the side of the bone through an incision. The holder is attached to the guide and rested against the skin for stability. With the x-ray on, the guide tube is adjusted by moving the holder until the guide lines up with the hole in the rod. A drill bit is then inserted into the guide.



Locking Drill Guide Holder

Trocar Alignment Tool

Sleeve

PRODUCT NO'S:	
8986-00 [Assembly Set]	Set includes: (1) Holder, (1) Sleeve, and (1) Trocar
<b>Also available individually:</b>	
8986-01 [Drill Guide Sleeve]	Overall Length: 3.85" (9.8 cm) Outside Diameter: 7 mm
8986-02 [Drill Guide Trocar Alignment Tool]	Overall Length: 4.375" (11.1 cm) Trocar Diameter: 5 mm
8987 [Locking Drill Guide Holder]	Overall Length: 10.5 (26.7 cm) Guide Height: 21 mm





# Pointed Fracture Reduction Clamps

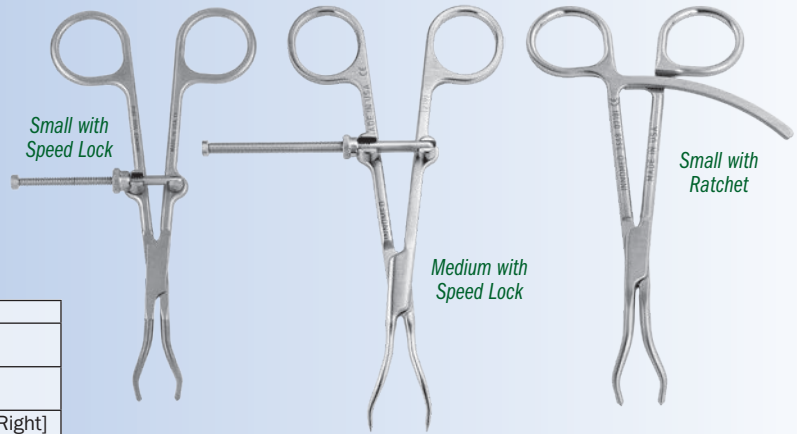
Designed by Reza Firoozabadi, MD MA

Versatile set of fracture reduction clamps, each with a specific tine design that allows for appropriate vector placement so that anatomic reduction can be obtained in a number of different types of fractures

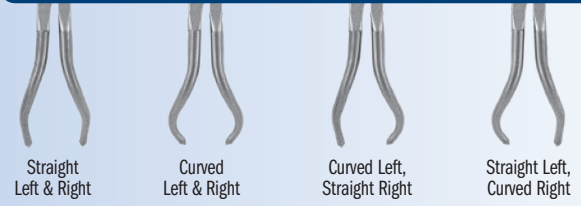
- ▶ 1.9 mm tines allow for a snug fit in 2 mm drill holes
- ▶ Tines angled to prevent clamp "slippage" with compression
- ▶ Straight tines can be placed deep within bone which allows for far cortex compression.
- ▶ Clamps incorporate a box joint design that prevents clamp joint loosening and the need for tightening.
- ▶ Example applications: any transverse fracture (straight-straight clamp), both bone forearm fractures, olecranon fractures, medial malleolus fractures, and many more.
- ▶ Speed Lock Style: Extra-long spin down allows for increased range of clamp use, and open-topped joint rotates to allow for increased range of opening, and also allows for quick release



PRODUCT NO'S:	
<b>SMALL WITH SPEED LOCK MECHANISM</b>	<b>MEDIUM WITH SPEED LOCK MECHANISM</b>
3666 [Straight Left & Right] Overall Length: 5.5" (14 cm)	3666-01 [Straight Left & Right] Overall Length: 7" (17,8 cm)
3667 [Curved Left & Right] Overall Length: 5.5" (14 cm)	3667-01 [Curved Left & Right] Overall Length: 7" (17,8 cm)
3666-L [Curved Left, Straight Right] Overall Length: 5.5" (14 cm)	3666-L-01 [Curved Left, Straight Right] Overall Length: 7" (17,8 cm)
3666-R [Straight Left, Curved Right] Overall Length: 5.5" (14 cm)	3666-R-01 [Straight Left, Curved Right] Overall Length: 7" (17,8 cm)
<b>SMALL WITH RATCHET MECHANISM</b>	
3668 [Straight Left & Right] Overall Length: 5.5" (14 cm)	
3669 [Curved Left & Right] Overall Length: 5.5" (14 cm)	
3668-L [Curved Left, Straight Right] Overall Length: 5.5" (14 cm)	
3668-R [Straight Left, Curved Right] Overall Length: 5.5" (14 cm)	



Two styles – Speed Lock and Ratchet – each available in four tine configurations



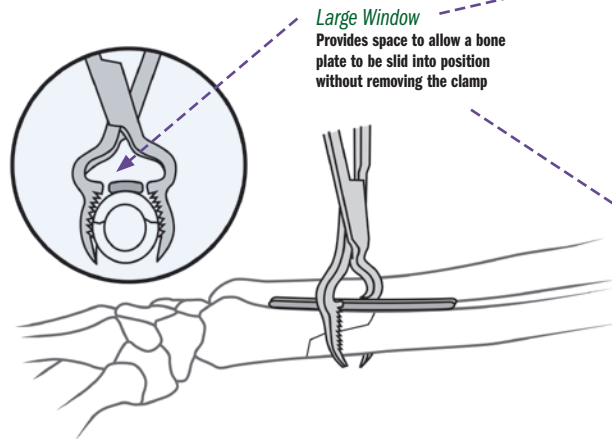
# Durham Bone Reduction Clamps

Designed by Alfred A. Durham, MD

Allows application of a bone plate without removing the reduction clamp

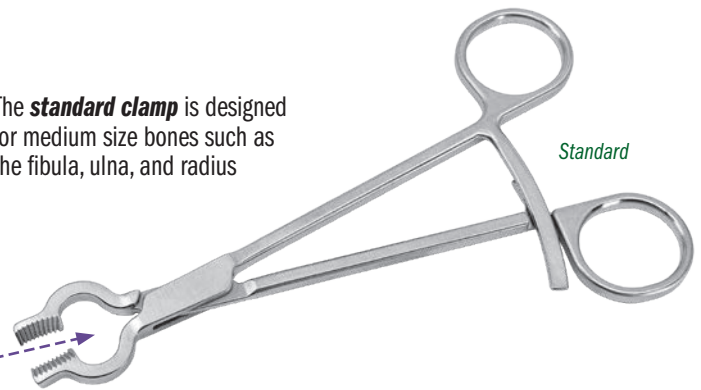
The large window directly above the jaws provide space to allow a bone plate to be slid into position without removing the clamp.

PRODUCT NO'S:
3652 [Standard] Overall Length: 7.375" (18,7 cm)
3652-01 [Large with Speedlock] Overall Length: 9.25" (32,5 cm)

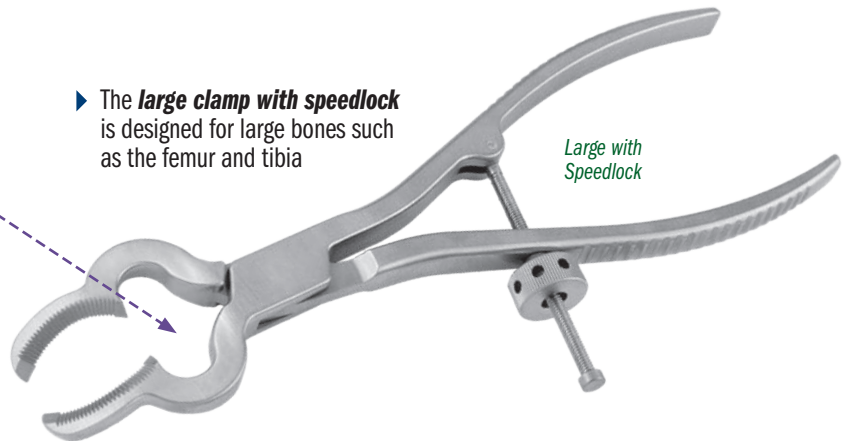


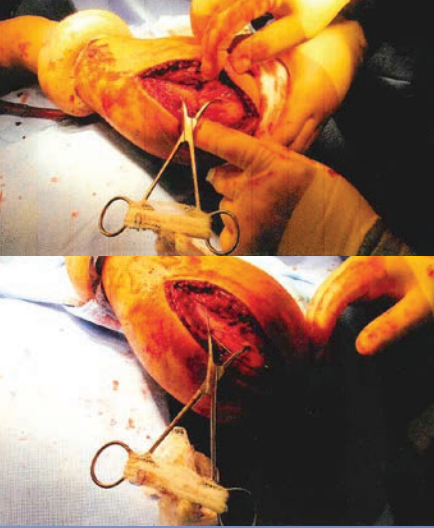
**Large Window**  
Provides space to allow a bone plate to be slid into position without removing the clamp

- ▶ The **standard clamp** is designed for medium size bones such as the fibula, ulna, and radius



- ▶ The **large clamp with speedlock** is designed for large bones such as the femur and tibia





## Calvo Olecranon Reducing Forceps

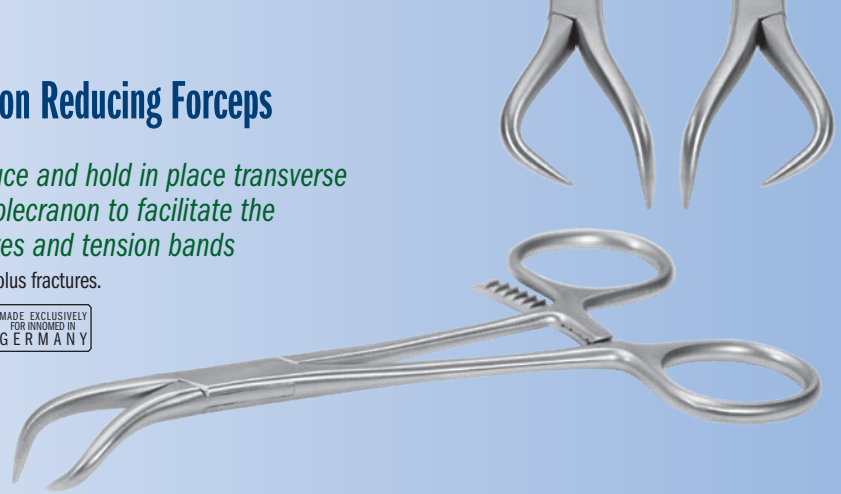
Designed by Ignacio J. Calvo, MD

*Designed to reduce and hold in place transverse fractures of the olecranon to facilitate the insertion of k-wires and tension bands*

Also very useful in malleolus fractures.

PRODUCT NO'S:	
1801-L	[Left]
1801-R	[Right]

MADE EXCLUSIVELY  
FOR INNOMED IN  
GERMANY



## Durkan Ratchet Bone Clamps

Designed by John Durkan, MD

*Design of ratcheting mechanism allows for quick tightening and release around the bone*

PRODUCT NO'S:	
1867	[Large]
Overall Length: 8.625" (21,9 cm)	
Jaw opens to: 3.5" (8,9 cm)	
1868	[Small]
Overall Length: 8.5" (21,6 cm)	
Jaw opens to: 3.75" (9,5 cm)	

MADE EXCLUSIVELY  
FOR INNOMED IN  
GERMANY



## Chen Low Profile Plate/Bone Clamp

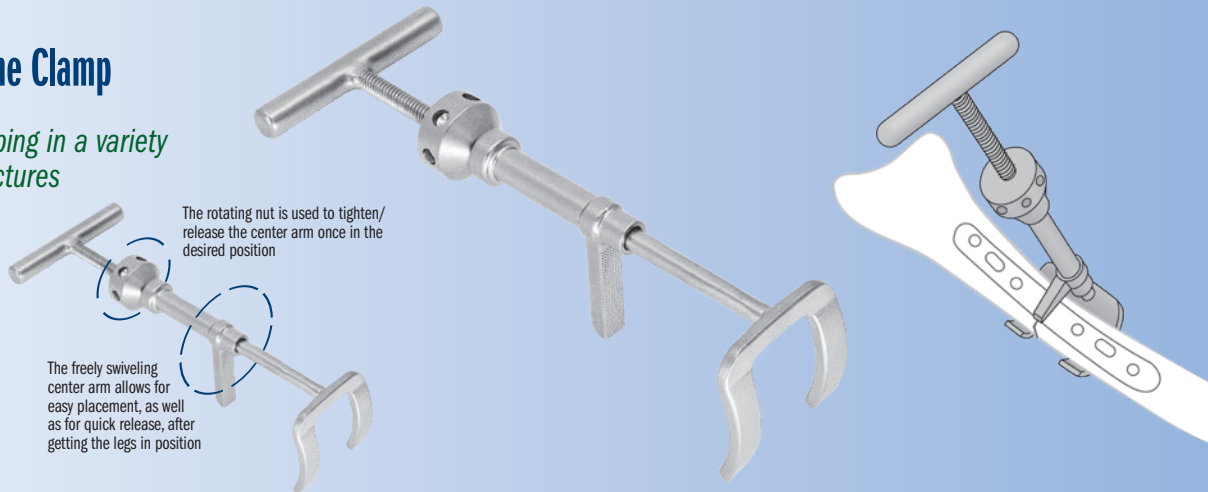
Designed by Franklin Chen, MD

*Designed for plate to bone clamping in a variety of lower and upper extremity fractures*

Useful for diaphyseal forearm fractures, humerus fractures, and distal radius fractures.

PRODUCT NO:	
1639	
Overall Length: 4.5" (11,4 cm)	
Prong Depth: 1" (2,5 cm)	
End Prong Width: 6 mm   16 mm Gap   6 mm	
Clamps from: .375" to 2.4" (1 to 6 cm)	

USA MADE



The rotating nut is used to tighten/release the center arm once in the desired position

The freely swiveling center arm allows for easy placement, as well as for quick release, after getting the legs in position

## Bargo Bone Holding Clamp

Designed by Lonnie Bargo, CST/CFA

*Designed to aid in the reduction of various fractures, and can help secure a plate in place during installation*



Designed to aid in the reduction of various fractures such as: spiral, transverse, compound, oblique, or butterfly. The clamp can also be used to secure a plate in place while the screw holes are being drilled and screws inserted, it has teeth in the jaws for a better grip, and a ratchet locking handle for use on various bone diameters. The fracture site can also be manipulated with the clamp being used as a lever.

PRODUCT NO:	
1895-02	
Overall Length: 8.5" (21,6 cm)	
Pads: 1.25" x 1" (32 mm x 25 mm)	

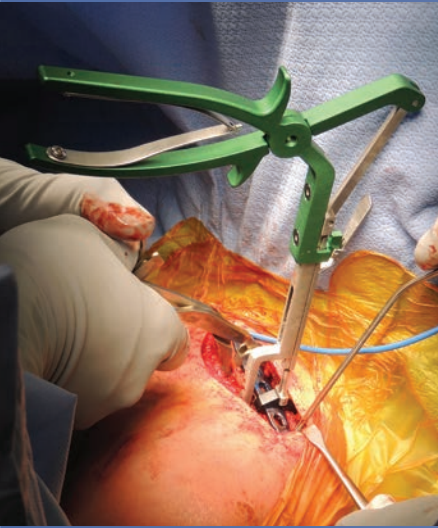
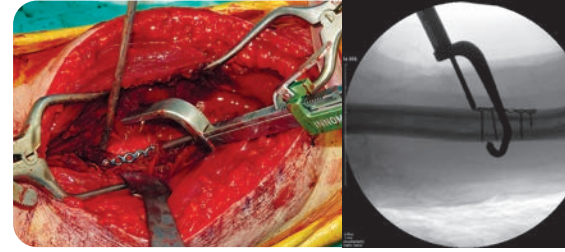
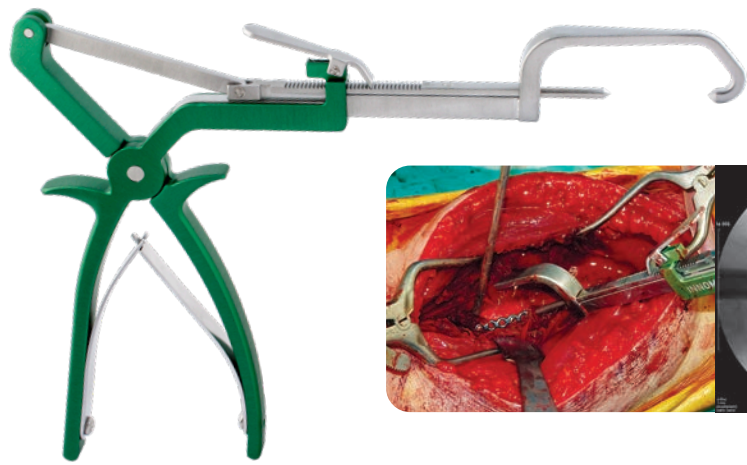
USA MADE

## Fracture Reduction Punch Clamp

Designed by Jong-Keon Oh, MD

Designed for use in select cases when vertical (or sagittal) plane clamping is necessary during forearm reduction, humeral fracture reduction, or diaphyseal reduction of the tibial shaft

**PRODUCT NO:**  
5072  
Overall Length: 10.5" (26,7 cm)  
Point to Point Opening:  
- Minimum .375" (10 mm)  
- Maximum 1.375" (35 mm)  
Pin Diameter: .125" (3,2 mm)

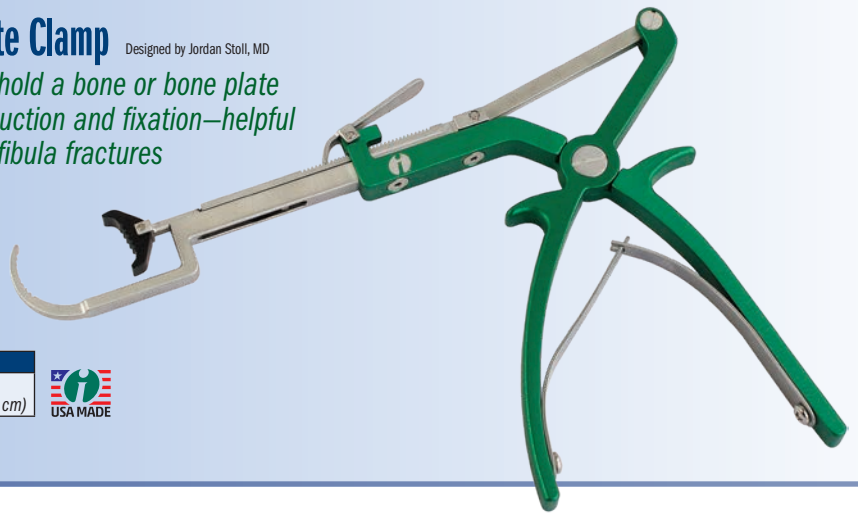


## Stoll Bone Plate Clamp

Designed by Jordan Stoll, MD

Designed to help hold a bone or bone plate in position for reduction and fixation—helpful with clavicle and fibula fractures

**PRODUCT NO:**  
1774  
Overall Length: 10" (25,4 cm)



## Browner MIS Bone Clamp

Designed by Bruce D. Browner, MD

Designed to help hold a bone or bone plate for fixation, the clamp is inserted anterior to the bone, rotated to wrap around the bone, then screwed into the desired position

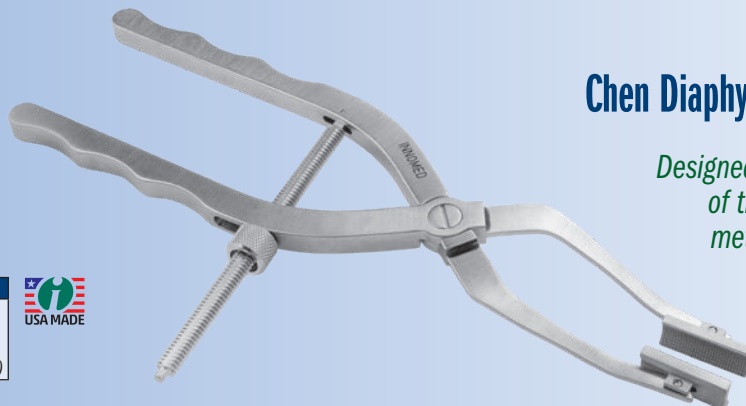
Sized to allow use on a femur, tibia or humerus.

**PRODUCT NO:**  
1379  
Overall Length: 9.25" to 11.5" (23,5 to 29,2 cm)  
Maximum Bone Diameter: ~ 35 mm



- ▶ Pivoting pads accommodate metaphyseal fractures
- ▶ The quick release enables adjustment without losing reduction
- ▶ Helps provide provisional reduction of diaphyseal fractures - humeral shaft fractures, tibial fractures

**PRODUCT NO:**  
1808  
Overall Length: 9.25" (23,5 cm)  
Arm Downward Offset: 15 mm  
Pad Dimensions: 1" x .375" (25,4 cm x 1 cm)



## Chen Diaphyseal Fracture Reduction Clamp

Designed by Franklin Chen, MD

Designed to facilitate and maintain reduction of the internal fixation of diaphyseal and meta-diaphyseal fractures of long bones

Works especially well with short oblique bones while providing room to implement the plate with this bone clamp still in place.

# Tissue Graspers with Shark Teeth

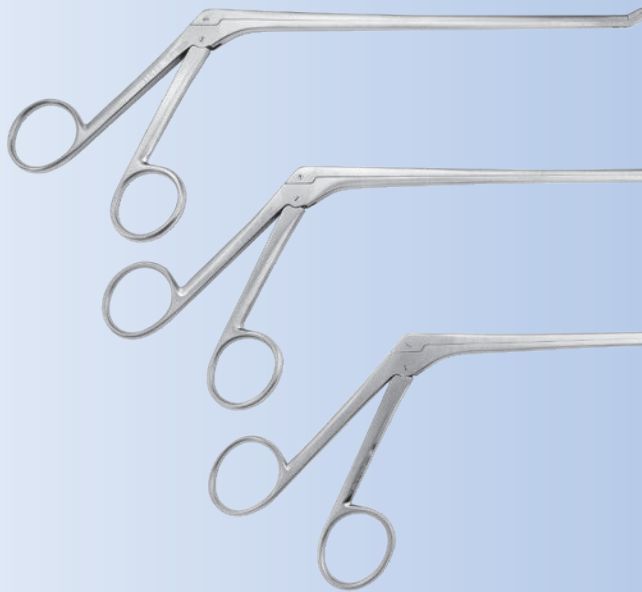
Designed by Luis Ulloa

*Shark teeth help to grasp on to tissue and bone*

Shaft allows for use in narrow spaces.

PRODUCT NO'S:	
1784-01 [Up Angled Jaw]	Shaft Length: 7" (17,8 cm) Overall Length: 10" (25,4 cm) Jaw: 9 mm Long x 5 mm High x 1.8 mm Wide
1784-02 [Straight Jaw]	Shaft Length: 7" (17,8 cm) Overall Length: 10" (25,4 cm) Jaw: 9 mm Long x 5 mm High x 1.8 mm Wide
1784-03 [Down Angled Jaw]	Shaft Length: 7" (17,8 cm) Overall Length: 10" (25,4 cm) Jaw: 9 mm Long x 5 mm High x 1.8 mm Wide

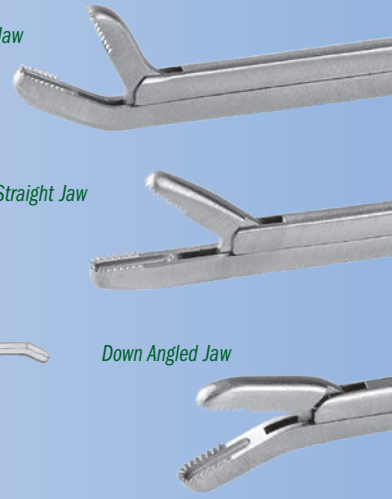
MADE EXCLUSIVELY FOR INNOMED IN GERMANY



Up Angled Jaw

Straight Jaw

Down Angled Jaw



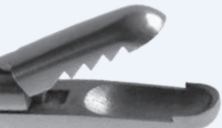
# Cartilage Graspers

*Helps to grasp and hold cartilage, tendons, soft tissues and loose bodies*

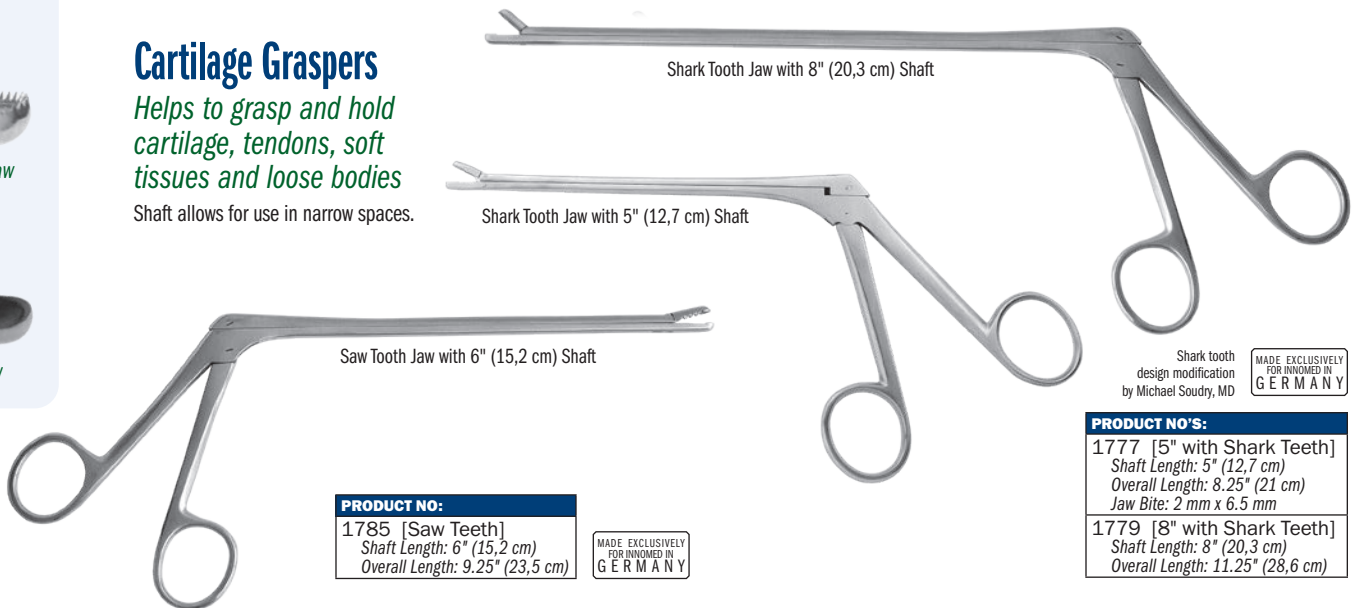
Shaft allows for use in narrow spaces.



Shark Tooth Jaw



Saw Tooth Jaw



Shark Tooth Jaw with 8" (20,3 cm) Shaft

Shark Tooth Jaw with 5" (12,7 cm) Shaft

Saw Tooth Jaw with 6" (15,2 cm) Shaft

PRODUCT NO:	
1785 [Saw Teeth]	Shaft Length: 6" (15,2 cm) Overall Length: 9.25" (23,5 cm)

MADE EXCLUSIVELY FOR INNOMED IN GERMANY

Shark tooth design modification by Michael Soudry, MD

MADE EXCLUSIVELY FOR INNOMED IN GERMANY

PRODUCT NO'S:	
1777 [5" with Shark Teeth]	Shaft Length: 5" (12,7 cm) Overall Length: 8.25" (21 cm) Jaw Bite: 2 mm x 6.5 mm
1779 [8" with Shark Teeth]	Shaft Length: 8" (20,3 cm) Overall Length: 11.25" (28,6 cm)

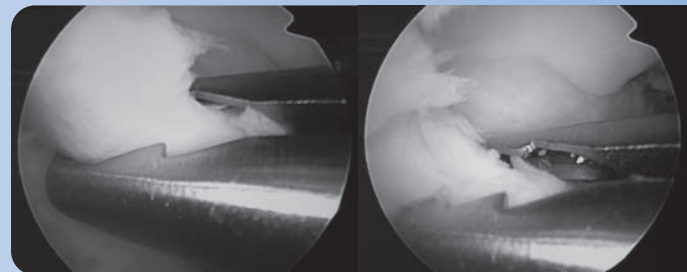
# Soudry Loose Body Grasper

Designed by Michael Soudry, MD

*Designed to help with the removal of soft tissue loose bodies in arthroscopy and open procedures*

PRODUCT NO:	
1769	Overall Length: 9" (22,9 cm) Shaft Length: 6" (15,2 cm)

MADE EXCLUSIVELY FOR INNOMED IN GERMANY





# Shark Tooth Graspers

Designed by Luis Ulloa

*Sharp teeth help grasp onto tissue and bone*

Helpful in removing the labrum, and osteophytes around the acetabulum and around the glenoid. Also helps to remove meniscus, osteophytes and loose bodies. Helps facilitate working through a small incision without disrupting vision.

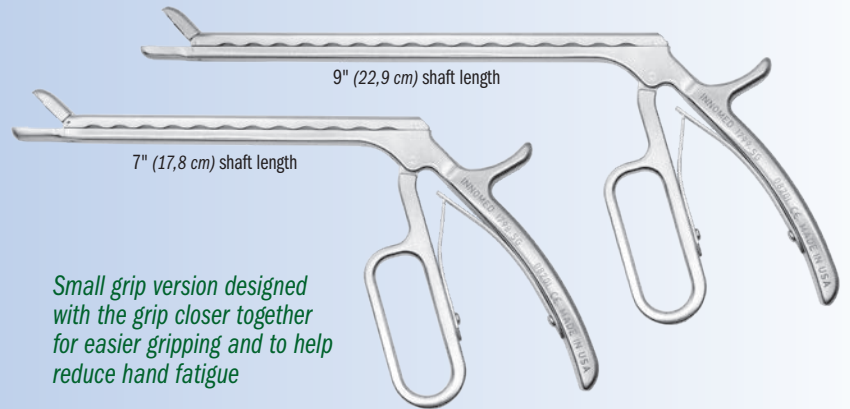
## Small Grip Handle



### PRODUCT NO'S:

1798-SG [7" Small Grip]  
 Jaw Size: 6 mm x 10 mm  
 Overall Length: 10" (25,4 cm)  
 Shaft Length: 7" (17,8 cm)

1799-SG [9" Small Grip]  
 Jaw Size: 6 mm x 10 mm  
 Overall Length: 12" (30,5 cm)  
 Shaft Length: 9" (22,9 cm)



*Small grip version designed with the grip closer together for easier gripping and to help reduce hand fatigue*

## Standard Handle

### PRODUCT NO'S:

1797 [5" Standard]  
 Jaw Size: 6 mm x 10 mm  
 Overall Length: 8" (20,3 cm)  
 Shaft Length: 5" (12,7 cm)

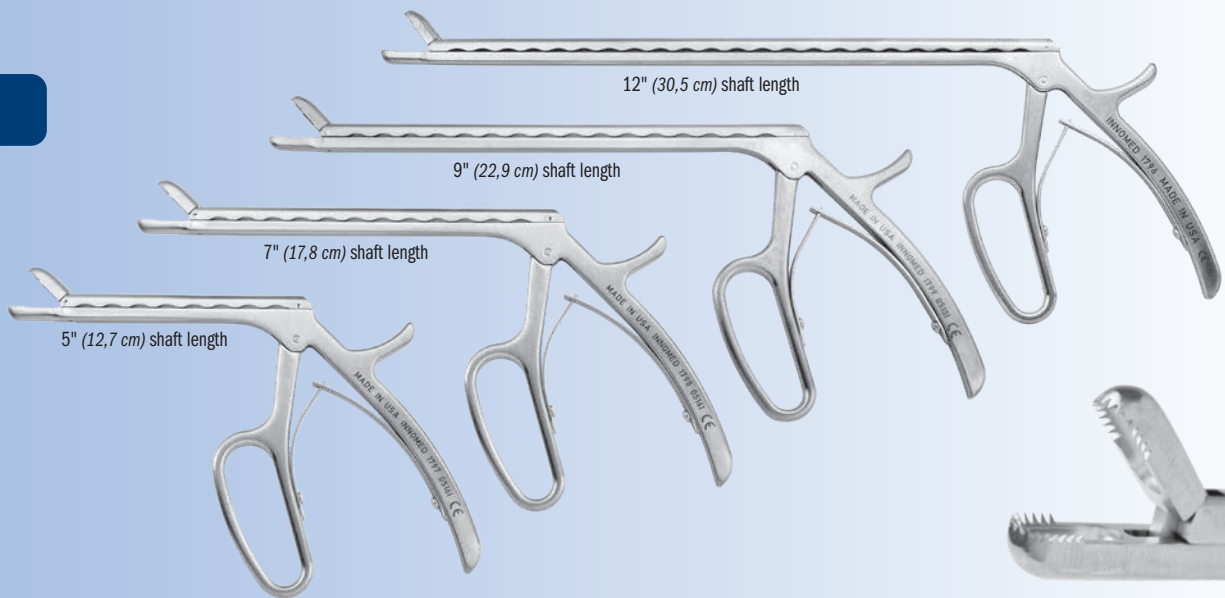
1798\* [7" Standard]  
 Jaw Size: 6 mm x 10 mm  
 Overall Length: 10" (25,4 cm)  
 Shaft Length: 7" (17,8 cm)

1799 [9" Standard]  
 Jaw Size: 6 mm x 10 mm  
 Overall Length: 12" (30,5 cm)  
 Shaft Length: 9" (22,9 cm)

1796 [12" Standard]  
 Jaw Size: 6 mm x 10 mm  
 Overall Length: 15" (38,1 cm)  
 Shaft Length: 12" (30,5 cm)



\* MADE EXCLUSIVELY FOR INNOMED IN GERMANY



# Powers Modified Kocher Clamps

Designed by Mark Powers, MD



*Heavier design allows for a firmer grasping of bone and soft tissues*

### PRODUCT NO'S:

1813 [Tapered Jaw]  
 Overall Length: 8.25" (21 cm)  
 Jaw Length: 2.5" (6,4 cm)  
 Jaw at End: 5.2 mm x 4.1 mm

1813-01 [Tapered Narrow Jaw]  
 Overall Length: 8.25" (21 cm)  
 Jaw Length: 2.5" (6,4 cm)  
 Jaw at End: 5.2 mm x 3 mm

1814 [Square Jaw]  
 Overall Length: 8.25" (21 cm)  
 Jaw Length: 2.5" (6,4 cm)  
 Jaw at End: 6.5 mm x 5 mm



## Hooked Bone Awls

Designed by Reza Firoozabadi, MD

*“Shoulder hook” awls designed to help with manipulation of bone fragments for fixation*

PRODUCT NO'S:
5078 [Standard] Overall Length: 10.5" (26,7 cm) Handle Length: 5" (12,7 cm)
5078-01 [Long] Overall Length: 13.375" (34 cm) Handle Length: 6" (15,2 cm)



Standard hooked bone awl being used to gain length to assist with reduction of a fibula fracture. A 2mm pilot hole is made to seat the tip of the bone awl.

## Lateral Condyle Fracture Set

Designed by Carl R. Weinert, MD

*Designed for adult and pediatric lateral condyle fractures*

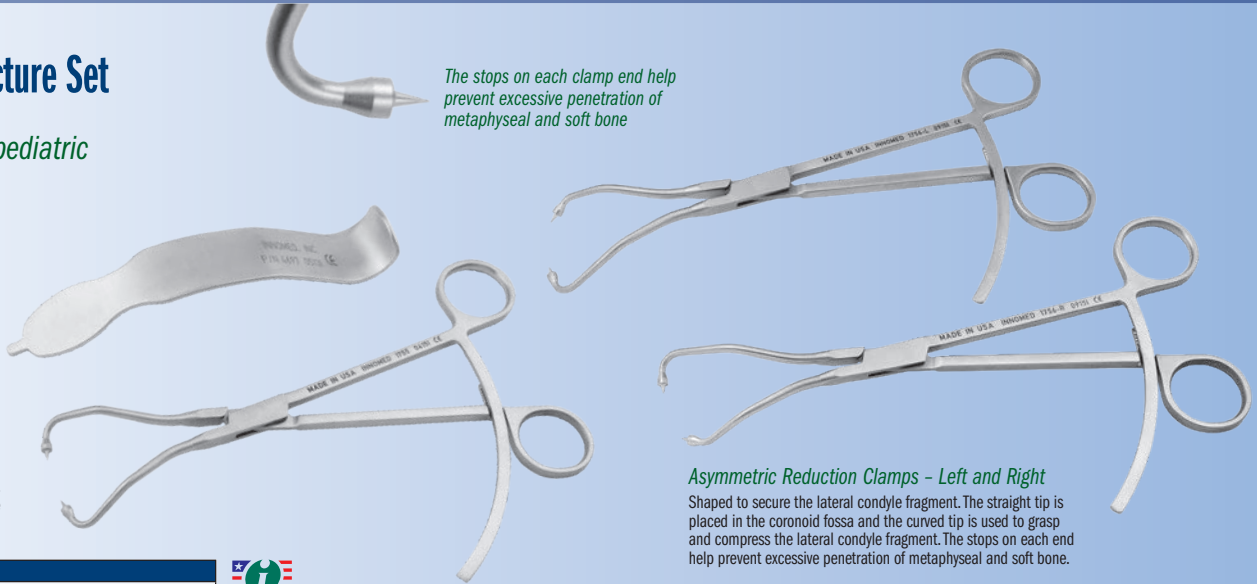
### Elbow Retractor

Designed for use within the elbow joint to retract the anterior capsule, and provide full exposure of the anterior articular surface for reduction and fixation of displaced lateral condyle fractures. The small blunt tip hooks over the intact medial condyle.

### Symmetric Reduction Clamp

Useful to compress T-condylar fractures, and in many other fracture reduction applications. The stops on each end help prevent excessive penetration of metaphyseal and soft bone.

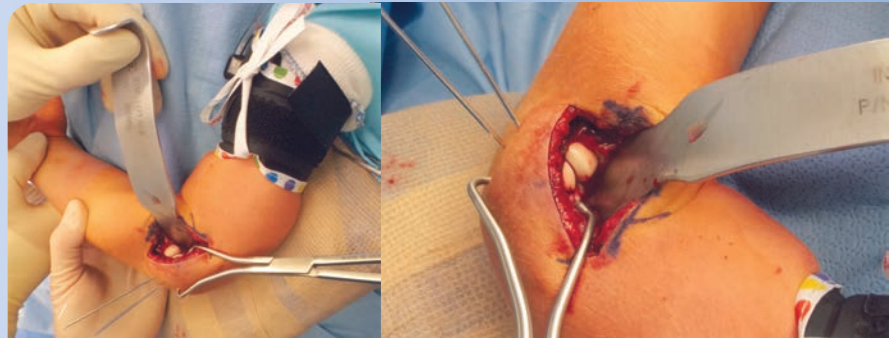
*The stops on each clamp end help prevent excessive penetration of metaphyseal and soft bone*



### Asymmetric Reduction Clamps - Left and Right

Shaped to secure the lateral condyle fragment. The straight tip is placed in the coronoid fossa and the curved tip is used to grasp and compress the lateral condyle fragment. The stops on each end help prevent excessive penetration of metaphyseal and soft bone.

PRODUCT NO'S:
4697-00 [Set with Case]
<b>Set Includes / Available Individually:</b>
1755 [Clamp - Symmetric] Overall Length: 8.5" (21,6 cm) Jaw opens to: 3" (7,6 cm)
1756-L [Clamp - Asymmetric Left] Overall Length: 8.75" (22,2 cm)
1756-R [Clamp - Asymmetric Right] Overall Length: 8.75" (22,2 cm)
4697 [Elbow Retractor] Overall Length: 6.5" (16,5 cm) Blade Width: 1" (2,54 cm)
1015 [Sterilization Case] Dimensions: 11.25" x 7.125" x 3.125" (28,6 cm x 18,1 cm x 7,9 cm)



## Beard Distal Biceps Retractor

Designed by David Beard, MD

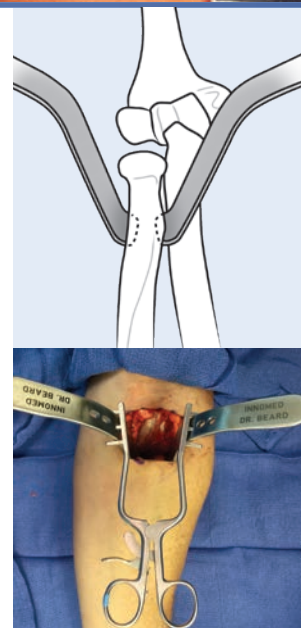
*Designed to help optimize surgical exposure during anterior single incision distal biceps tendon reinsertion*

The blade design features an anatomically contoured distal end to hug the radius cortex. The smooth distal end helps to avoid deep penetration, and the width matches the width of the distal biceps tendon insertion site. The narrow curved handle design helps to optimize workspace and visualization.

PRODUCT NO'S:
5834-00 [Set - Retractor & Two Blades]
<b>Available Individually:</b>
5834-01 [Blade] 1 blade with this product number Overall Length: 6.375" (16,2 cm) Width: .625" (16 mm)
5834-02 [Self-retaining Retractor] Overall Length: 7.5" (19,1 cm)



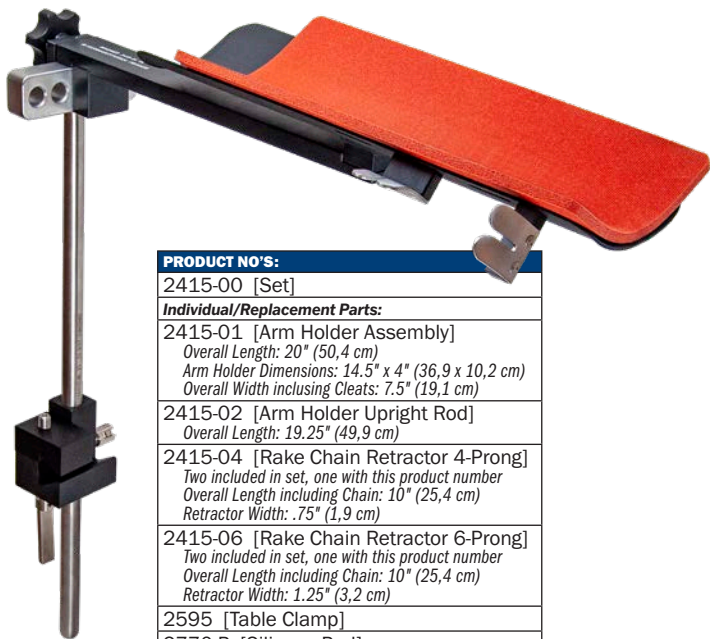
Sold as a set, or available individually for replacement



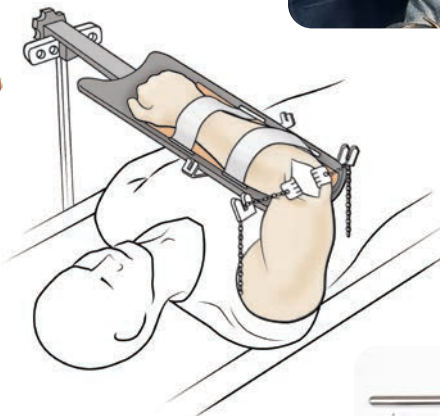
# Auerbach Arm Holder Rake Retractor Set

Designed by David M. Auerbach, MD

*Allows intraoperative positioning for procedures of the posterior arm, elbow, and forearm*



PRODUCT NO'S:	
2415-00	[Set]
<b>Individual/Replacement Parts:</b>	
2415-01	[Arm Holder Assembly] Overall Length: 20" (50,4 cm) Arm Holder Dimensions: 14.5" x 4" (36,9 x 10,2 cm) Overall Width including Cleats: 7.5" (19,1 cm)
2415-02	[Arm Holder Upright Rod] Overall Length: 19.25" (49,9 cm)
2415-04	[Rake Chain Retractor 4-Prong] Two included in set, one with this product number Overall Length including Chain: 10" (25,4 cm) Retractor Width: .75" (1,9 cm)
2415-06	[Rake Chain Retractor 6-Prong] Two included in set, one with this product number Overall Length including Chain: 10" (25,4 cm) Retractor Width: 1.25" (3,2 cm)
2595	[Table Clamp]
2770-P	[Silicone Pad] Dimensions: 12" x 5.5" (30,5 x 14 cm)
<b>Replacement Parts:</b>	
2590-S	[Black Straps] Pkg of 10



- ▶ Simple design for fast and easy positioning
- ▶ Connects over the drape in the sterile field using the supplied rail clamp and post
- ▶ Can be repositioned during surgery
- ▶ Sterilizable rubber pad protects the arm
- ▶ Retractors for the skin and soft tissues connect to the holder
- ▶ Compact for easy storage



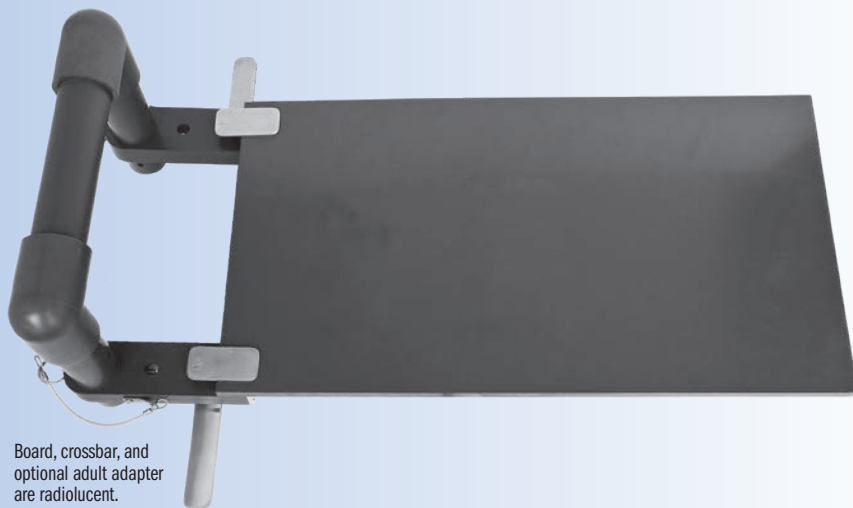
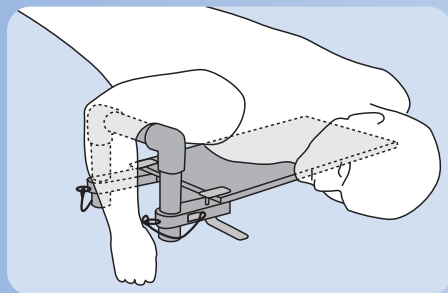
Set includes: Arm Holder Upright and Assembly, (2) 4-Prong Chain Retractors, (2) 6-Prong Chain Retractors, (2) Black Straps, Silicone Pad, and Table Clamp.

# Distal Humerus Fracture Board

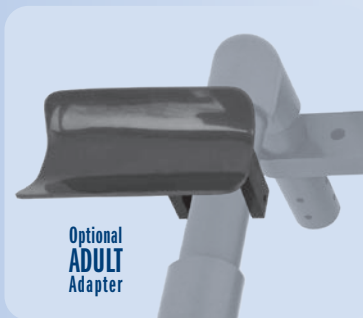
Designed by Burk Young, MD

*Designed for the pinning of pediatric supra-condylar and adult distal humerus fractures*

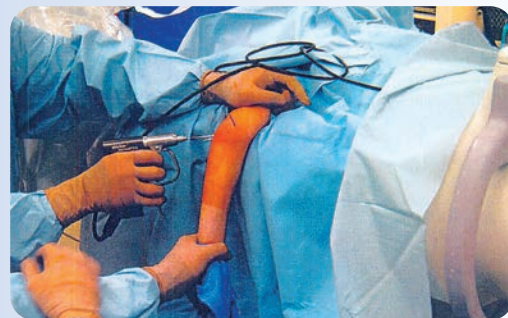
Allows the surgeon to pin these fractures without having to manually hold the fracture reduced, allowing the surgeon to focus on accurate pin placement and reduction. The height of the crossbar is fully adjustable to accommodate different size patients. Reduction is achieved by an assistant gently applying axial traction through the forearm, with the crossbar applying the counter traction. Pinning is done with the C-arm in the lateral position. An optional separate attachment to support the arm for distal humerus fractures in adults is available. Unit not sterilizable.



Board, crossbar, and optional adult adapter are radiolucent.



Optional  
ADULT  
Adapter



PRODUCT NO'S:	
2445	[Fracture Board – Pediatric] Main Board Dimensions: 22" x 12" (55,8 cm x 30,5 cm) Crossbar Height Adjusts From: 4.5" to 7.5" (11,4 cm x 19,1 cm)
2445-01	[Fracture Board – With Adult Adapter]
<b>Optional/Replacement Part:</b>	
2445-06	[Adult Adapter]





## Chandran Distal Biceps Tissue Protector

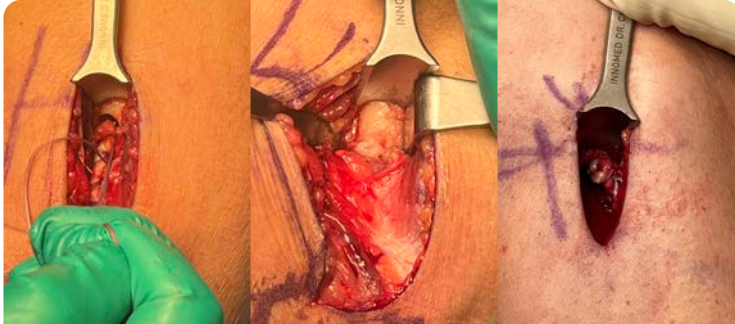
Designed by Rama E. Chandran, MD

*Designed to help protect tissue and expose the radial tuberosity during distal biceps tendon repair*

Using downward pressure, the teeth help to engage bone to keep the protector in place.

*Helps to protect tissue and expose the radial tuberosity during distal biceps tendon repair*

*Also useful to help expose the humerus during proximal subpectoral biceps repair*



**New!**



*Also useful to help expose the humerus during proximal subpectoral biceps repair.*

**PRODUCT NO:**  
3224  
Overall Length: 8" (20,3 cm)  
Handle Length: 5.5" (14 cm)  
Blade Depth: 1.7" (4,3 cm)  
Blade Width: .65" (1,7 cm)

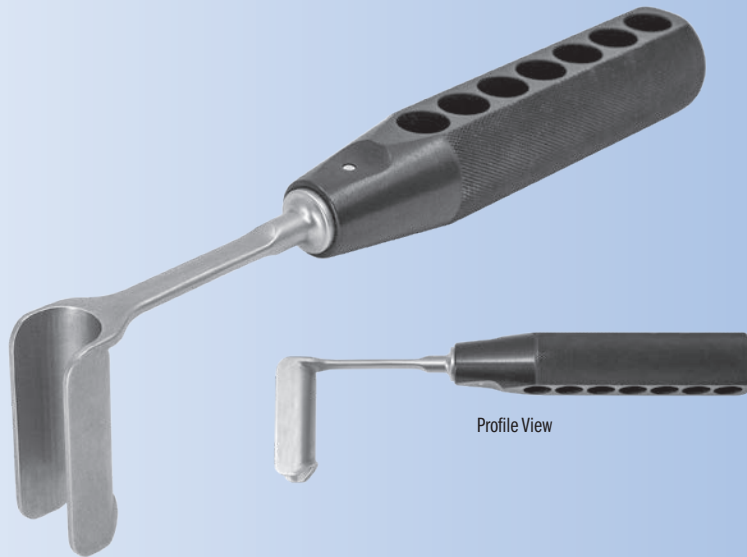


## Vaughan Distal Bicep Tendon Repair Retractor

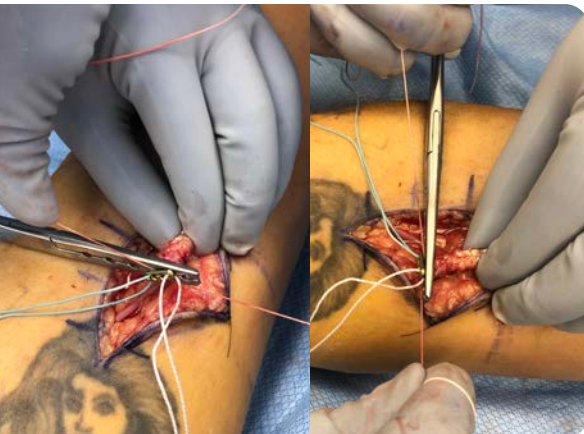
Designed by Roderick A. Vaughan, MD

*Designed to retract in a continuous way in three directions, helping to prevent the surrounding vital structures from entering the field while drilling or performing the repair work*

**PRODUCT NO:**  
3223  
Overall Length: 8.375" (21,3 cm)  
Handle Length: 5.25" (13,3 cm)  
Depth: 2" (5,1 cm)



Profile View

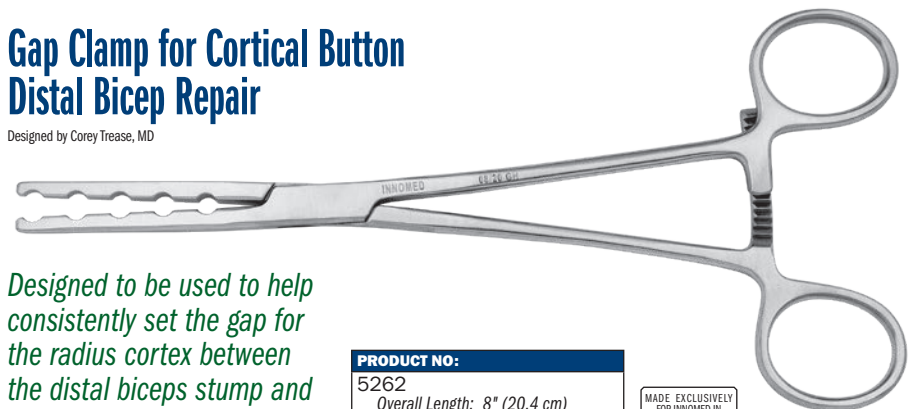


## Gap Clamp for Cortical Button Distal Bicep Repair

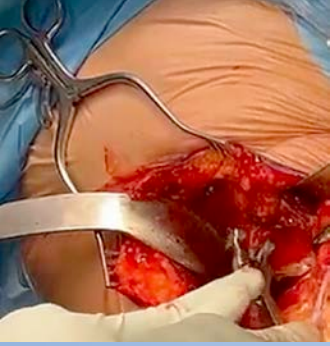
Designed by Corey Trease, MD

*Designed to be used to help consistently set the gap for the radius cortex between the distal biceps stump and the cortical button*

**PRODUCT NO:**  
5262  
Overall Length: 8" (20,4 cm)  
Jaw Width Tapers from: 6 to 2.5 mm







## Beicker Hammerhead Rongeur

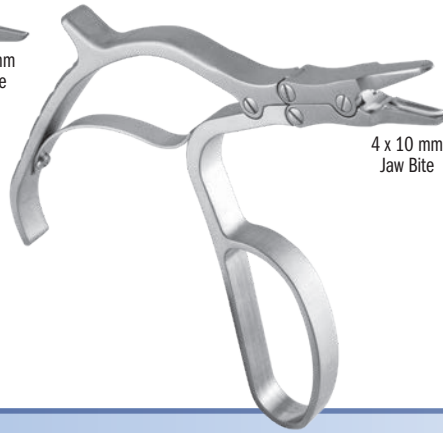
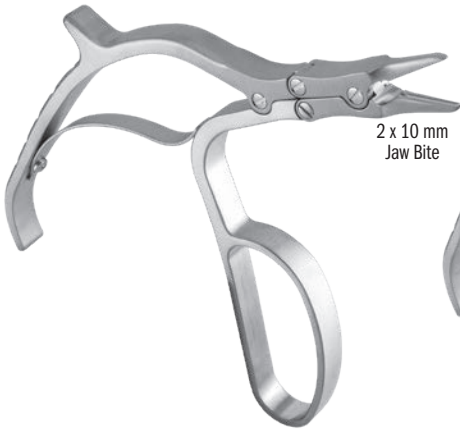
Designed by Clint Beicker, MD

*Designed to help remove osteophytes from around the acetabulum and glenoid*

**PRODUCT NO:**  
1775-05  
Overall Length: 8" (20,3 cm)  
Jaw Bite: 15 mm x 7 mm

MADE EXCLUSIVELY FOR INNOVED IN GERMANY

**New!**

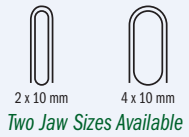


## Mazzara Rongeur for Small Bones

Designed by James T. Mazzara, MD

*Designed for bone and soft tissue removal in small joint surgery, the pistol grip handle lessens hand fatigue and slippage, and allows for better visualization*

**PRODUCT NO'S:**  
1765-04  
Jaw Bite: 2 x 10 mm  
Overall Length: 9" (22,9 cm)  
1765-05  
Jaw Bite: 4 x 10 mm  
Overall Length: 9" (22,9 cm)



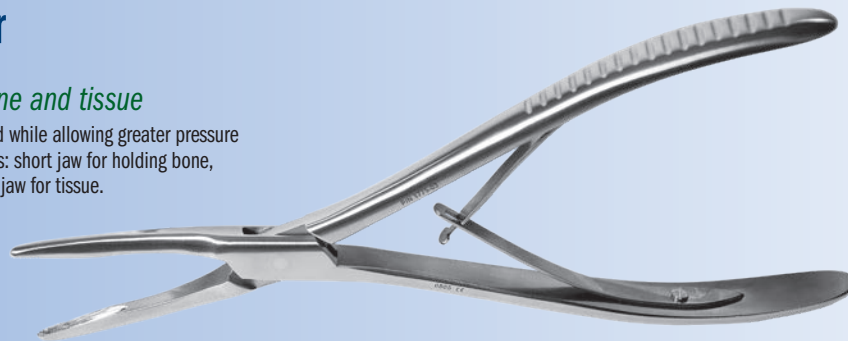
## Hannum Tissue Grasper

Designed by Scott Hannum, MD

*Teeth in jaw firmly holds bone and tissue*

Non-locking design can be easily gripped while allowing greater pressure to be applied. Available in three jaw sizes: short jaw for holding bone, medium jaw for smaller bones, and long jaw for tissue.

Jaw widths at actual size



**PRODUCT NO'S:**  
1775-01 [Short Jaw]  
Jaw Width: 8 mm  
Overall Length: 9.25" (23,5 cm)  
1775-02 [Medium Jaw]  
Jaw Width: 5 mm  
Overall Length: 9.25" (23,5 cm)  
1775-03 [Long Jaw]  
Jaw Width: 3 mm  
Overall Length: 9.25" (23,5 cm)

MADE EXCLUSIVELY FOR INNOVED IN GERMANY

## Long Jaw Needle Nose Pliers

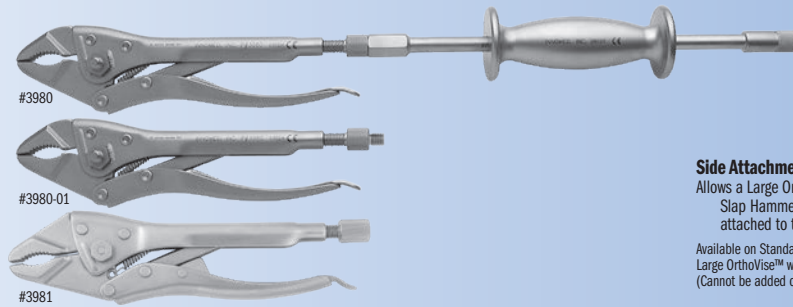
**PRODUCT NO:**  
1833  
Overall Length: 7" (17,8 cm)  
Jaw Length: 2.25" (5,7 cm)  
Jaw Width Tapered from: 8 mm to 1.5 mm  
Jaw Height Tapered from: 12 mm to 2.5 mm

MADE EXCLUSIVELY FOR INNOVED IN GERMANY



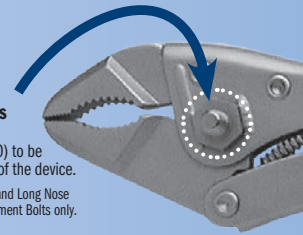
## STANDARD LARGE

PRODUCT NO'S:	
	OrthoVise™ Length: 10" (25,4 cm)
3980	with Attachment Bolts (two sides & end) with Large OrthoVise™ Slap Hammer (#3950)
3980-01	with Attachment Bolts (two sides & end) without Slap Hammer
3981	without Attachment Bolts without Slap Hammer with End Attachment Nut that accepts a Standard Slap Hammer (#3925 or 3926)



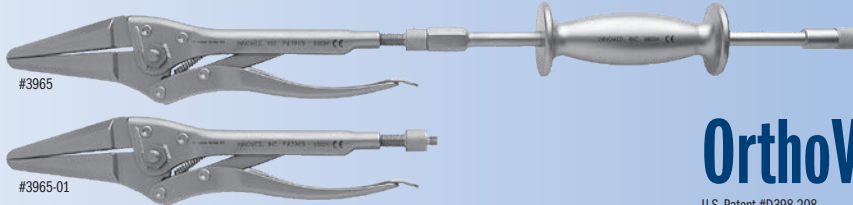
**Side Attachment Bolts**  
Allows a Large OrthoVise™  
Slap Hammer (#3950) to be  
attached to the side of the device.

Available on Standard Large and Long Nose  
Large OrthoVise™ with Attachment Bolts only.  
(Cannot be added on later.)



## LONG NOSE LARGE

PRODUCT NO'S:	
	OrthoVise™ Length: 12" (30,5 cm)
3965	with Attachment Bolts (two sides & end) with Large OrthoVise™ Slap Hammer (#3950)
3965-01	with Attachment Bolts (two sides & end) without Slap Hammer

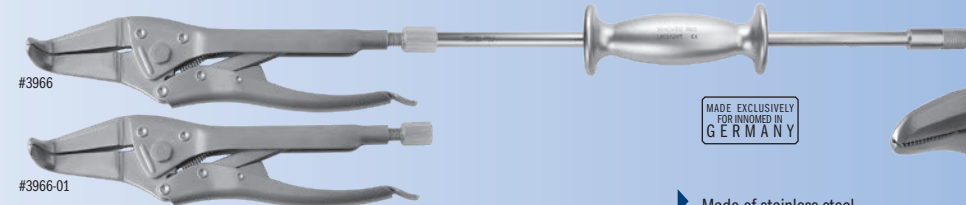


**OrthoVise™**

U.S. Patent #D398,208

## LONG NOSE LARGE BENT JAW

PRODUCT NO'S:	
	OrthoVise™ Length: 11.5" (29,2 cm)
3966	with Attachment Nut (end) with Standard Slap Hammer (#3925)
3966-01	without Slap Hammer with Attachment Nut (end) that accepts a Standard Slap Hammer (#3925 or 3926)



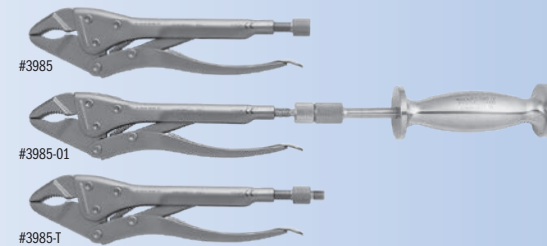
MADE EXCLUSIVELY  
FOR INNOMED IN  
GERMANY

- ▶ Made of stainless steel
- ▶ Models equipped with attachment bolts allow a slap hammer to be attached to the end, as well as to either side of the large OrthoVise™ (except Bent Jaw models), for greater adaptability
- ▶ Bent Jaw models are not available with side attachment bolts, but have an end attachment nut to accept a Standard Slap Hammer (#3925 or #3926)
- ▶ A different size slap hammer is used for the large and small sizes of OrthoVise™
- ▶ Slap Hammers are designed with a hammer plate for the additional use of a mallet if desired



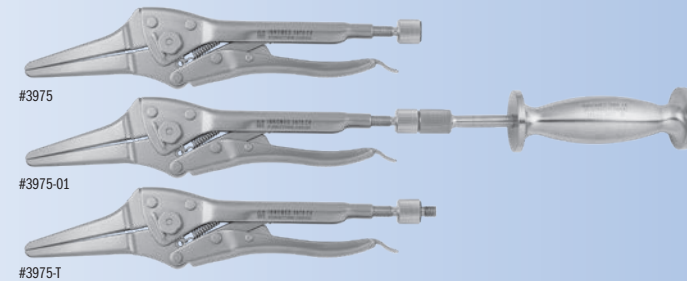
## STANDARD SMALL

PRODUCT NO'S:	
	OrthoVise™ Length: 8" (20,3 cm)
3985	without Attachment Bolt without Slap Hammer
3985-01	with Attachment Bolt (end) with Small OrthoVise™ Slap Hammer (#3955)
3985-T	with Attachment Bolt (end) without Slap Hammer



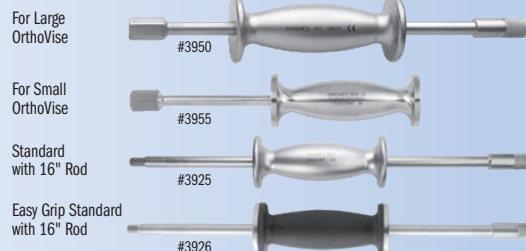
## LONG NOSE SMALL

PRODUCT NO'S:	
	OrthoVise™ Length: 9.5" (24,1 cm)
3975	without Attachment Bolt without Slap Hammer
3975-01	with Attachment Bolt (end) with Small OrthoVise™ Slap Hammer (#3955)
3975-T	with Attachment Bolt (end) without Slap Hammer



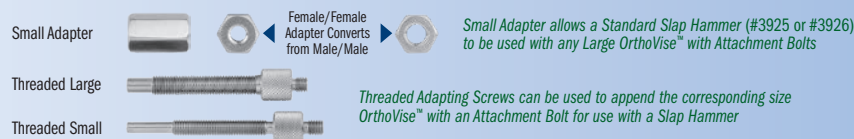
## SLAP HAMMERS

PRODUCT NO'S:	
3950	[Slap Hammer for Large OrthoVise] For use with 3965's, 3980's, 3981 Overall Length: 16.5" (41,9 cm)
3955	[Slap Hammer for Small OrthoVise] For use with: 3975's, 3985's Overall Length: 8.75" (22,2 cm)
3925	[Standard Slap Hammer w/16" Rod] For use with: 3966's Overall Length: 16" (40,7 cm)
3926	[Easy Grip Slap Hammer w/16" Rod] For use with: 3966's Overall Length: 16" (40,7 cm)



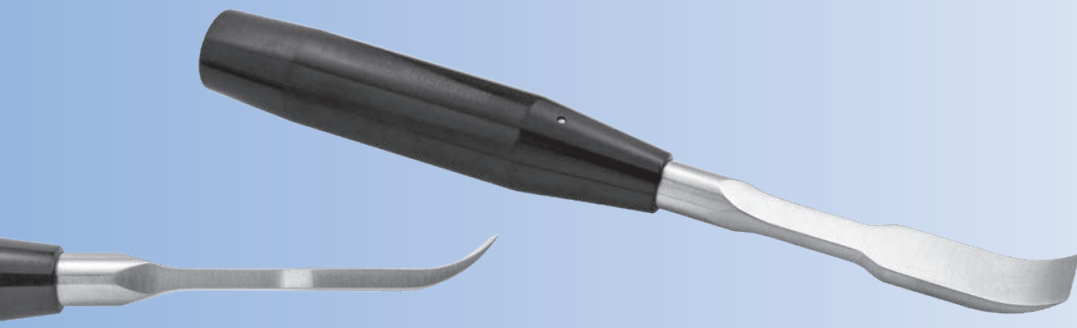
## THREADED ADAPTERS

PRODUCT NO'S:	
3980-02	[Small Adapter] Changes Male End of a Slap Hammer to Female
3980-03	[Threaded Adapting Screw - Large] For use with 3965's, 3966's, 3980's, 3981
3985-03	[Threaded Adapting Screw - Small] For use with: 3975's, 3985's



Small Adapter allows a Standard Slap Hammer (#3925 or #3926) to be used with any Large OrthoVise™ with Attachment Bolts

Threaded Adapting Screws can be used to append the corresponding size OrthoVise™ with an Attachment Bolt for use with a Slap Hammer



## Durham Curved Osteotome

Designed by Alfred A. Durham, MD

Increased angle useful for posterior osteophytes of the humeral head and the femoral condyle, as well as anterior acetabular osteophytes

PRODUCT NO:
4950
Overall Length: 9" (22,9 cm)
Handle Length: 5" (12,7 cm)
Osteotome Width: .625" (1,6 cm)



## Modified Lambotte Osteotomes

Designed with a striking platform, plus a cross-bar hole to help control rotational stability and assist with removal

PRODUCT NO'S:	
5350-00 [Set w/Case]	
<b>Also Available Individually:</b>	
5350-25* [1/4"] Overall Length: 9" (22,9 cm) Osteotome Width: .25" (6,4 mm)	5350-125 [1-1/4"] Overall Length: 9" (22,9 cm) Osteotome Width: 1.25" (31,8 mm)
5350-50* [1/2"] Overall Length: 9" (22,9 cm) Osteotome Width: .5" (12,7 mm)	5350-150 [1-1/2"] Overall Length: 9" (22,9 cm) Osteotome Width: 1.5" (38,1 mm)
5350-75 [3/4"] Overall Length: 9" (22,9 cm) Osteotome Width: .75" (19 mm)	5350-CASE [Case] Dimensions: 12.25" x 11.25" x 1" (31,1 x 28,6 x 2,5 cm)
5350-100 [1"] Overall Length: 9" (22,9 cm) Osteotome Width: 1" (25,4 mm)	5350-CB [Cross Bar] Overall Length: 4.375" (11,1 cm)



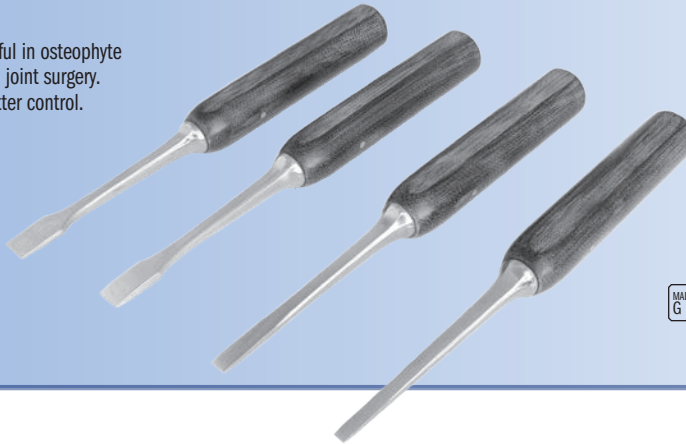
MADE EXCLUSIVELY FOR INNOMED IN GERMANY



Six (6) sizes available, from 1/4" to 1-1/2" in 1/4" increments. Cross-bar and case included in complete set. Two smallest sizes have an 1/8" hole in which an 1/8" pin can be used as a cross bar (not included).



Small, thin osteotomes helpful in osteophyte and cement removal in total joint surgery. Larger handle helps with better control.



MADE FOR INNOMED IN GERMANY

## Mini-lexer Osteotomes

Helpful in osteophyte and cement removal

PRODUCT NO'S:	
5270-01 Blade Width: 4 mm Overall Length: 7.25" (18,4 cm) Handle Length: 4" (10,2 cm)	5270-03 Blade Width: 10 mm Overall Length: 7.25" (18,4 cm) Handle Length: 4" (10,2 cm)
5270-02 Blade Width: 6 mm Overall Length: 7.25" (18,4 cm) Handle Length: 4" (10,2 cm)	5270-04 Blade Width: 12 mm Overall Length: 7.25" (18,4 cm) Handle Length: 4" (10,2 cm)

## Whelan Flexible Chisel Guide

Designed by E. J. Whelan, III, MD

Designed to help stabilize a thin chisel blade until it's within the bone prosthesis interface

Guide with sliding handle helps to stabilize a thin flexible chisel blade until it's within the bone prosthesis interface. Chisel tip lets it hug the prosthesis to help prevent perforation. Slap hammer threads into the handle and is designed to facilitate blade removal. Easily changeable disposable blades help assure sharpness.



PRODUCT NO'S:
5301-00 [Complete Set]
<b>Included In Set / Replacement Parts:</b>
5301-01 [Guide Only] Overall Length: 5.5" to 8.5" (14 cm to 21,6 cm) w/o blade
5301-02 [10 mm Chisel Blade Only] Overall Length: 4.625" (11,7 cm) Blade Thickness: .020" (0,51 mm)
3040 [Slap Hammer]
1015 [Sterilization Case]

Chisel blade features an ultra hard titanium nitride coating to help extend life by increasing surface hardness, prolonging sharpness, and resisting chemicals and corrosion.



Two blades included in Set

# Flexible Osteotome System

Provides an assortment of osteotome blades for various orthopedic surgery procedures

PRODUCT NO'S:	
S0011-00	[Set with Quick-Coupling Handle and Case]
S0012-00	[Set with Locking Nut Handle and Case]
Individual Instruments Included in Sets:	
S1002	[Thin Osteotome Blade] 2.5" (6,3 cm) x 8 mm
S1003	[Thin Osteotome Blade] 2.5" (6,3 cm) x 10 mm
S1004	[Thin Osteotome Blade] 2.5" (6,3 cm) x 12 mm
S1005	[Thin Osteotome Blade] 2.5" (6,3 cm) x 20 mm
S1006	[Curved Thin Osteotome Blade] 2.5" (6,3 cm) x 12 mm
S1007	[Curved Thin Osteotome Blade] 5" (12,7 cm) x 20 mm
S1008	[Thin Osteotome Blade] 5" (12,7 cm) x 10 mm
S1009	[Thin Osteotome Blade] 5" (12,7 cm) x 8 mm
S1020	[Handle with Quick-Coupling End] 5" (12,7 cm) or
S1021	[Handle with Locking Nut] 5" (12,7 cm)
S1133	[Radial Osteotome] 5" (12,7 cm) x 10 mm
S1120	[Radial Osteotome] 5" (12,7 cm) x 12 mm
S1134	[Radial Osteotome] 5" (12,7 cm) x 14 mm
S1121	[Radial Osteotome] 5" (12,7 cm) x 16 mm
S1122	[Radial Osteotome] 5" (12,7 cm) x 20 mm
S2007	[Slap Hammer] 12" (30,5 cm)
9018	[Case]

- ▶ Sharp, flexible blades are well suited for loosening implants from cement or bony ingrowth fixation
- ▶ Various blade widths and profiles allow great flexibility to follow the implant contours
- ▶ Modular handle is made of high impact surgical stainless steel and has a quick-coupling positive locking mechanism for ease of use and quick blade changes
- ▶ Slap hammer threads into the handle and is designed to facilitate blade removal



## Optional Parts and Blades

- ▶ Optional Strike Plate can be attached to the Handle for direct striking with a mallet
- ▶ Optional Curved Chisel Blades are designed to help loosen the cement/prosthesis interval in TKA tibial tray and femoral component revisions. The curved design is useful in working around pegs & fins to get posterior cement access. Also helpful with removal of other implants, i.e. shoulder, ankle, etc.

PRODUCT NO'S:	
S1020-SP	[Strike Plate for Handle] Diameter 1.625" (4,1 cm)
Optional Osteotome Blades (Not Included In Complete Set):	
S1123	[7.5" XL Osteotome Blade] 7.5" (19,1 cm) x 8 mm
S1135	[Radial Osteo. Medial Curve] 6.75" (17,1 cm) x 11 mm
S1136	[Radial Osteo. Lateral Curve] 6.75" (17,1 cm) x 11 mm
S1137	[Radial Osteo. Medial Curve] 5" (12,7 cm) x 11 mm
S1138	[Radial Osteo. Lateral Curve] 5" (12,7 cm) x 11 mm
Optional Chisel Blades (Not Included In Complete Set):	
S1233-L	[2" Left Curved Chisel Blade] 2" (5,1 cm) x 8 mm
S1233-R	[2" Right Curved Chisel Blade] 2" (5,1 cm) x 8 mm
S1222	[2.5" Chisel Blade - 8 mm] 2.5" (6,4 cm) x 8 mm
S1223	[2.5" Chisel Blade - 10 mm] 2.5" (6,4 cm) x 10 mm
S1224	[2.5" Chisel Blade - 12 mm] 2.5" (6,4 cm) x 12 mm
S1225	[2.5" Chisel Blade - 20 mm] 2.5" (6,4 cm) x 20 mm
S1229	[5" Chisel Blade - 8 mm] 5" (12,7 cm) x 8 mm
S1228	[5" Chisel Blade - 10 mm] 5" (12,7 cm) x 10 mm
S1231	[5" Chisel Blade - 12 mm] 5" (12,7 cm) x 12 mm
S1230	[5" Chisel Blade - 20 mm] 5" (12,7 cm) x 20 mm
S1227	[5.5" Long Chisel Blade] 5.5" (14 cm) x 8 mm
S1232	[7.5" XL Chisel Blade] 7.5" (19,1 cm) x 8 mm
S1234	[8.5" XL Chisel Blade] 8.5" (21,6 cm) x 8 mm
S1235	[9.5" XL Chisel Blade] 9.5" (23,1 cm) x 8 mm
S1236	[10.5" XL Chisel Blade] 10.5" (26,7 cm) x 8 mm
S1237	[11.5" XL Chisel Blade] 11.5" (29,2 cm) x 8 mm
S1238	[12.5" XL Chisel Blade] 12.5" (31,8 cm) x 8 mm

Blade lengths reflect the actual working portion of the blade only. For overall length, add 1.5" (3,8 cm) to blade length listed above.

Medial and Lateral Curve Radial Blades designed by Henry Boucher, MD  
Curved Chisel Blades designed by William McMaster, MD

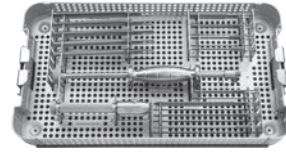


Handle with Quick-Coupling End

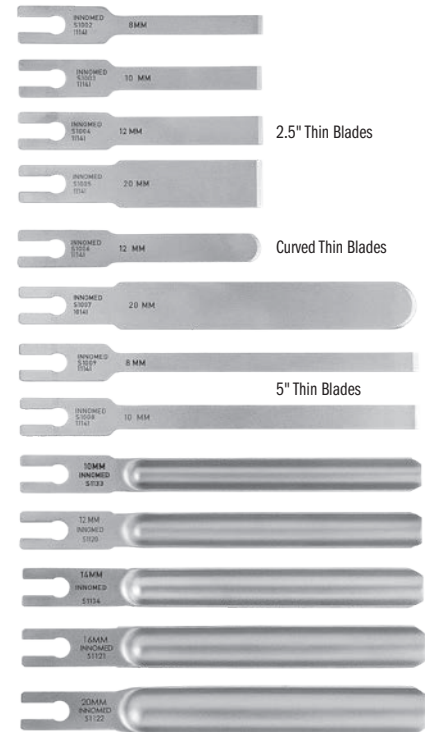
System Includes  
Choice of Handle Style



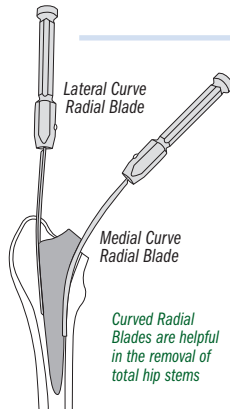
Handle with Locking Nut



Slap Hammer



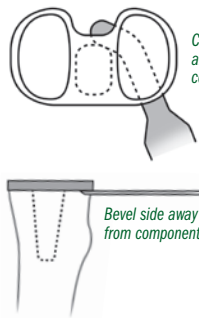
Radial Blades



Lateral Curve Radial Blade

Medial Curve Radial Blade

Curved Radial Blades are helpful in the removal of total hip stems



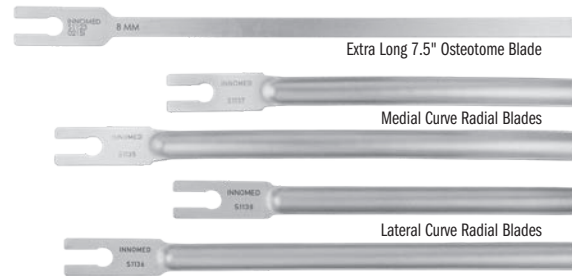
Curved chisel design allows working around component pegs, fins, etc.

Bevel side away from component

### Optional Parts and Blades



Strike Plate for Handle



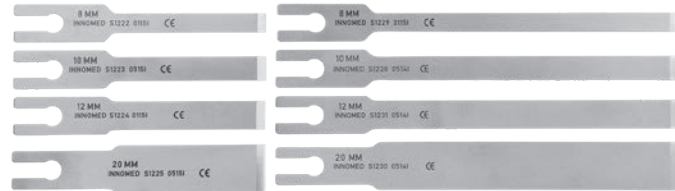
Extra Long 7.5" Osteotome Blade

Medial Curve Radial Blades

Lateral Curve Radial Blades



2" Curved Chisel Blades



2.5" Chisel Blades

5" Chisel Blades

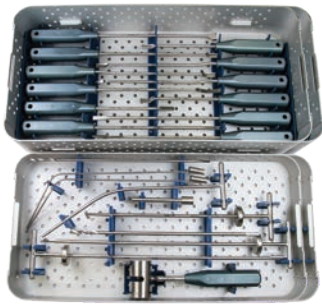


5.5" Long Chisel Blade

Extra long chisel blades designed for removal of well-fixed long bone intramedullary hardware



7.5", 8.5", 9.5", 10.5", 11.5", & 12.5" Extra Long Chisel Blades



Narrow Cement Removal Gouge, Short

Narrow Cement Removal Gouge, Long

Narrow Offset Cement Removal Gouge

Acetabular Chisel

Offset Chisel

Flared Angle Chisel

Wide Gouge

"V" Splitter

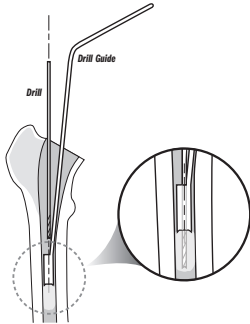
Saddle Punch

Cement Splitting Osteotome

Cement Removal Osteotome, Short

Cement Removal Osteotome, Long

**Drill & Drill Guide**



4.4 mm Drill & Drill Guide

6.4 mm Drill & Drill Guide

Straight Cement Removal Hook

Curved Cement Removal Hook

Cross Bar

7 mm T-Handle Conical Tap

9 mm T-Handle Conical Tap

Slotted Mallet

1

2

3

4

5

6

7

8

9

10

11

12

13

14

15

16

17

18

19

20

21

22

# Mueller-Type Cement Removal Instruments

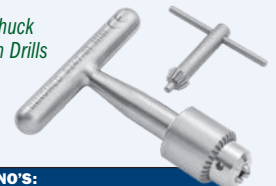
Used for cement removal in the hip, knee, and shoulder

PRODUCT NO.'S:	
S7500-00	[Complete Set with Case]
Individual Instruments:	
S7505	[Narrow Cement Removal Gouge, Short] Shaft Length: 15 cm Gouge: 9 mm, negative
S7507	[Narrow Cement Removal Gouge, Long] Shaft Length: 24 cm Gouge: 9 mm, negative
S7510	[Narrow Offset Cement Removal Gouge] Shaft Length: 24 cm Gouge: 9 mm, negative
S7515	[Acetabular Chisel] Shaft Length: 24 cm Chisel: 7.5 mm
S7520	[Offset Chisel] Shaft Length: 15 cm Chisel: 9 mm
S7525	[Flared Angle Gouge] Shaft Length: 24 cm Gouge: 9 mm, positive, angle 15° down
S7530	[Wide Gouge] Shaft Length: 24 cm Gouge: 11.5 mm, negative
S7535	["V" Splitter] V-Shaped Chisel: 7 mm
S7587	[Saddle Punch] Shaft Length: 24cm Punch: 16.5 mm x 6.5 mm
S7590	[Cement Splitting Osteotome] Shaft Length: 24 cm
S7595	[Cement Removal Osteotome, Short] Shaft Length: 15 cm Osteotome: 8 mm
S7597	[Cement Removal Osteotome, Long] Shaft Length: 24 cm Osteotome: 8 mm
S7540	[4.4 mm Drill]
S7545	[4.4 mm Drill Guide]
S7550	[6.4 mm Drill]
S7555	[6.4 mm Drill Guide]
S7560	[Straight Cement Removal Hook] Hook Curette: 10 mm
S7565	[Curved Cement Removal Hook] Hook Curette: 10 mm
S7570	[Cross Bar]
S7575	[7 mm T-Handle Conical Tap]
S7580	[9 mm T-Handle Conical Tap]
S7585	[Slotted Mallet]
9075	[Case Only]



**Optional Instruments:**

T-Handle Chuck  
for use with Drills

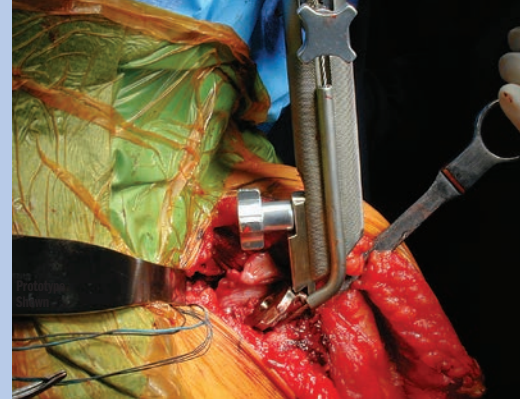
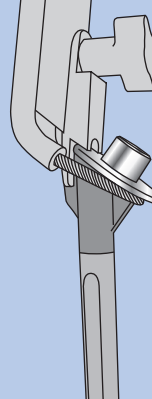
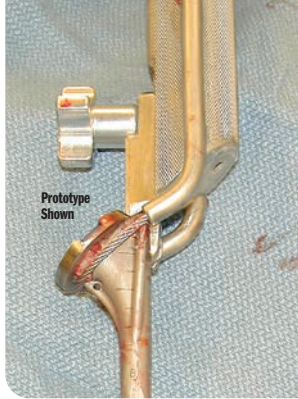


PRODUCT NO.'S:	
8247-00	[T-Handle Chuck & Key]
8247-01	[T-Handle Chuck Only]
8247-02	[Chuck Key Only]

# Nicholson Universal Humeral Prosthesis Extractor

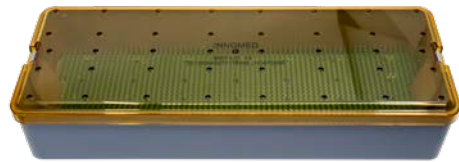
Designed by Gregory Nicholson, MD

Designed to fit most humeral prostheses

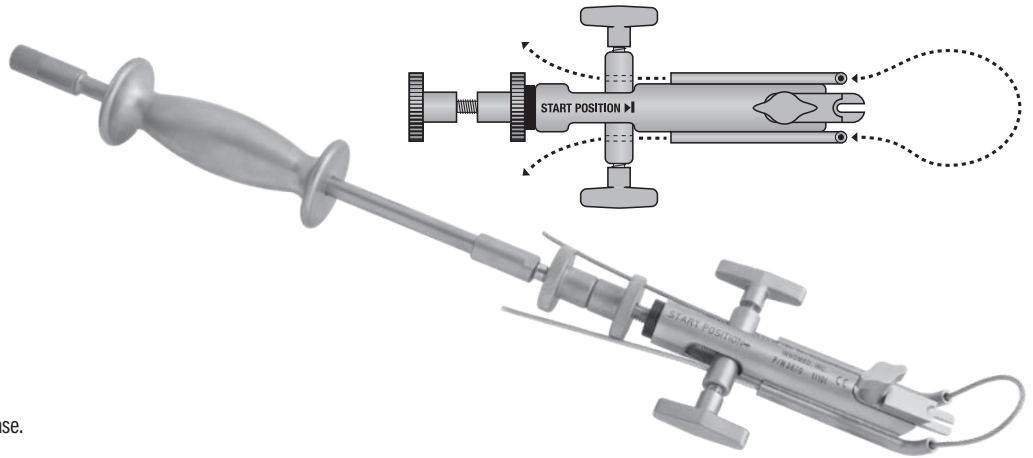


## PRODUCT NO'S:

3670 [Extractor Set with Case]
<b>Individual/Replacement Parts:</b>
3670-01 [Extractor Only]
3670-10 [Foot Adapter]
3670-CABLE [2.5 mm Cable] Package of 2
9007 [Case Only]
3925-A12 [12" (30,5 cm) Slaphammer Rod Only]
3925-H [Slaphammer Only (No Rod)]



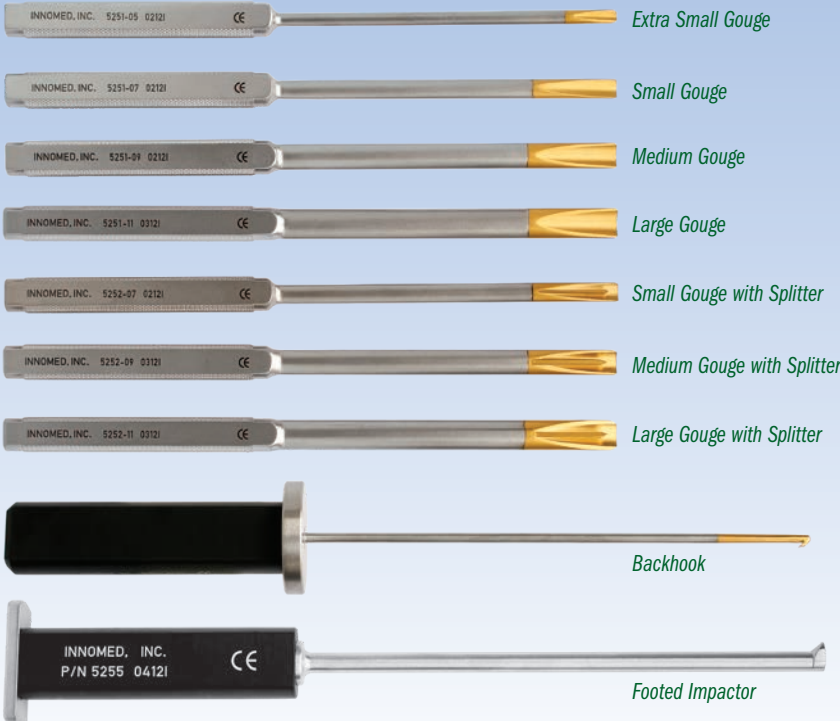
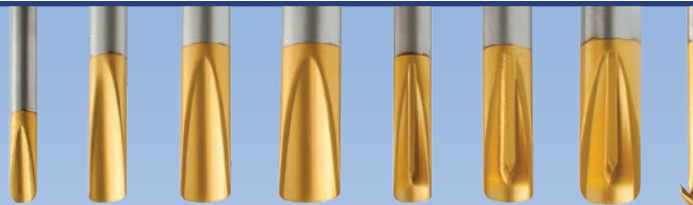
Set includes a slaphammer, two non-sterile 2.5 mm cables, and a sterilization case.



# Nicholson Shoulder and Small Bone Cement Removal Instruments

Designed by Gregory Nicholson, MD

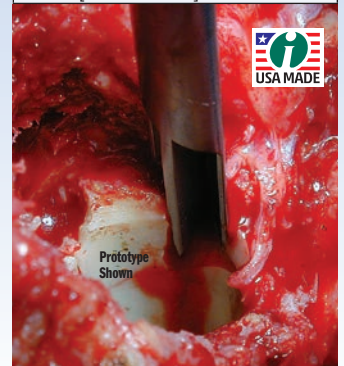
Designed to facilitate cement removal in smaller diameter bone of the humerus, ulna, and smaller implant geometries



- ▶ Reverse bevel tip helps the gouge to slide between the bone and cement
- ▶ T-shaped Gouge-Splitter allows the gouge to slide between the cement and bone and vertically split the cement mantle to facilitate removal
- ▶ Small diameter widths and curvatures more closely match shoulder and elbow implants and smaller bone diameters
- ▶ Shorter length allows for better control and access
- ▶ The footed impactor is used to help remove a humeral implant by impacting the medial collar of the prosthesis – helps provide a very direct parallel force to the implant for removal

## PRODUCT NO'S:

Gouges Overall Length: 9" (22,9 cm)
Gouges Handle Length: 4" (10,2 cm)
5251-00 [Complete Set w/Case]
5251-05 [Extra Small] Gouge Width: 5 mm
5251-07 [Small] Gouge Width: 7 mm
5251-09 [Medium] Gouge Width: 9 mm
5251-11 [Large] Gouge Width: 11 mm
5252-07 [Small w/Splitter] Gouge Width: 7 mm Splitter Height: 4 mm
5252-09 [Medium w/Splitter] Gouge Width: 9 mm Splitter Height: 5 mm
5252-11 [Large w/Splitter] Gouge Width: 11 mm Splitter Height: 6 mm
5254 [Backhook] Overall Length: 12.5" (31,8 cm) Handle Length: 4.5" (11,4 cm) Shaft Diameter: 4 mm
5255 [Footed Impactor] Foot Pad Size: 8.5 mm x 11.5 mm Shaft Diameter: 8.5 mm (21,6 cm) Overall Length: 12.75" (32,4 cm) Handle Length: 4.5" (11,4 cm)
5253 [Case for Set]



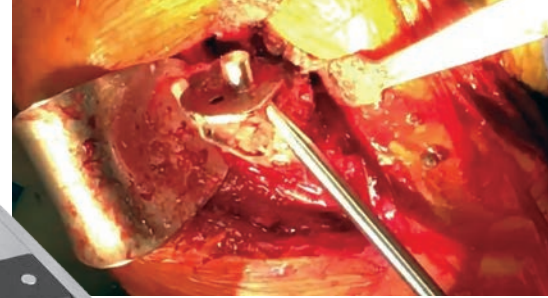
## Levy Humeral Stem Extraction Punch

Designed by Jonathan Levy, MD

Ultra hard cobalt chrome shaft and impactor tip designed to help remove a humeral stem during revision total shoulder arthroplasty

Can be used to open up distal cement mantle or pedestal during revisions.

PRODUCT NO:
8627
Overall Length: 12" (30,5 cm)
Handle/Platform Length: 4.75" (12,1 cm)
Punch Rod Length: 7.25" (18,4 cm)
Platform: 3" x .75" (7,6 cm x 1,9 cm)
Shaft Diameter: 8 mm, tapers to 4 mm at tip

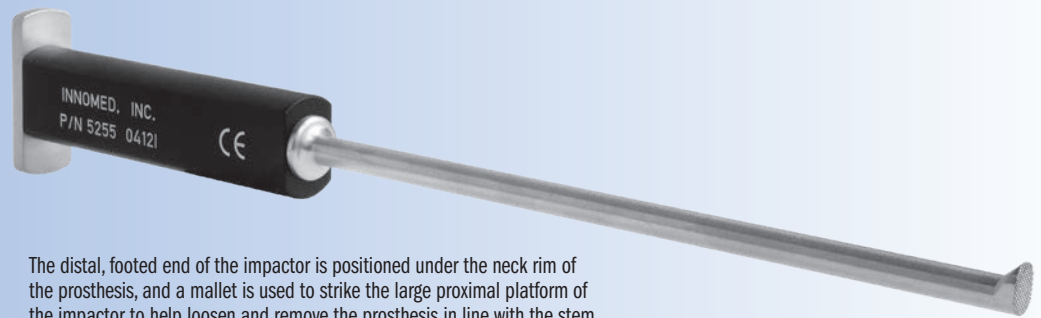


## Nicholson Footed Impactor

Designed by Gregory Nicholson, MD

Designed to help remove a humeral prosthesis by impacting the medial collar from underneath, after a gap has been exposed between the rim/bone interface

PRODUCT NO:
5255
Foot Pad Size: 8.5 mm x 11.5 mm
Shaft Diameter: 8.5 mm (21,6 cm)
Overall Length: 12.75" (32,4 cm)
Handle Length: 4.5" (11,4 cm)



The distal, footed end of the impactor is positioned under the neck rim of the prosthesis, and a mallet is used to strike the large proximal platform of the impactor to help loosen and remove the prosthesis in line with the stem.



## Wagner Osteotome Handle

Designed by Russell Wagner, MD

Handle is designed for easier gripping, rotational control, and use with a mallet with a standard 1/4" Lambotte osteotome

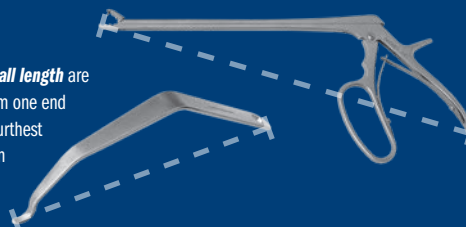
PRODUCT NO'S:
5348 [Handle Only]
Overall Length: 5.5" (14 cm)
5348-01 [1/4" Osteotome Only]
Overall Length: 8.875" (22,5 cm)



## Measurements in this Catalog

All effort has been made to ensure the accuracy of the measurements listed in this catalog, however, some small differences may exist between actual and listed measurements.

Measurements of **overall length** are the linear distance from one end of the product to the furthest opposite end, as shown in these examples:



Measurements of **blade width** are the linear distance from one side of the product to the opposite side, typically at the widest point, as shown in this example:



# FREE TRIAL

## on most instruments

Instruments are available for a no-charge two-week evaluation – includes FREE UPS Ground Shipping\*

\*When shipped to a hospital or medical center; additional charge applies for expedited shipping.  
Free trial offer excludes implant extraction instruments, which are available as rentals. There is a pad replacement charge with the hip positioners.

## Dodson Modular Retractor

Designed by Mark A. Dodson, MD

Allows the limb to be rotated (pronated or supinated) without loss of exposure. The hohmann retractors have three hole sizes which allow for a variety of positioning angle options using the teeth of the self-retaining retractor, or can also be positioned in-between the teeth. The hohmann is placed around the bone, and thus reduces the force on the soft tissues while increasing exposure. Can be used in the forearm to treat radius and ulna shaft fractures, humerus fractures, as well as in the leg for fibula fractures.

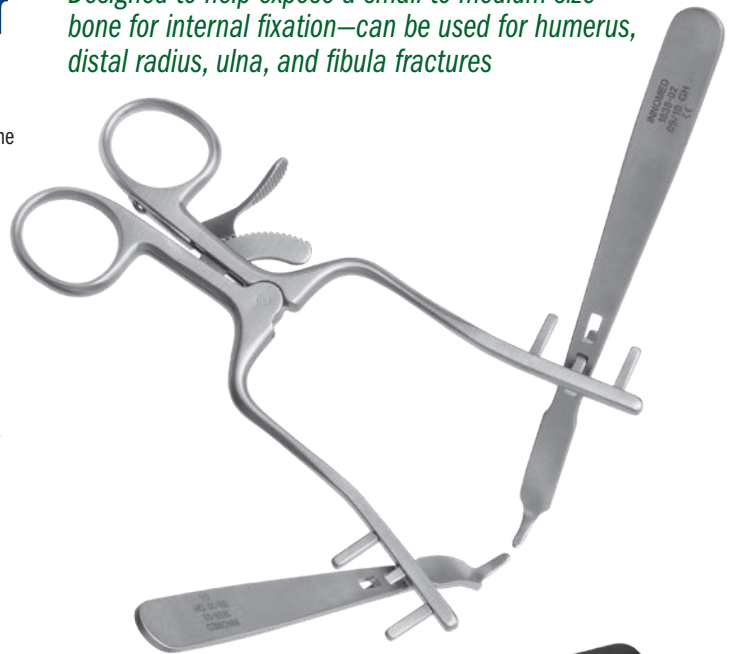
*Designed to help expose a small to medium size bone for internal fixation—can be used for humerus, distal radius, ulna, and fibula fractures*

<b>PRODUCT NO'S:</b>	Set consists of one ratcheting self-retaining retractor, two stainless steel mini-hohmann retractor blades, and a sterilization case.
1838-00 [Set]	
<b>Replacement Parts:</b>	
1838-01 [Retractor Only] Overall Length: 5.5" (14 cm)	
1838-02 [Blade Only – One] Overall Length: 5.25" (13.3 cm) Blade Width: 3/8" (9 mm)	
1025 [Sterilization Case Only]	
<b>Optional Parts – Not Included In Set:</b>	
1838-02R* [Radiolucent Blade Only – One] Overall Length: 5.25" (13.3 cm) Blade Width: 3/8" (9 mm)	

MADE EXCLUSIVELY FOR INNOMED IN GERMANY

MADE EXCLUSIVELY FOR INNOMED IN SWITZERLAND

US Patent No. 9,161,745 B2



### Optional radiolucent carbon fiber PEEK composite blade

The optional radiolucent blade is made of a strong, lightweight carbon fiber PEEK composite material, which is completely radiolucent, helps to prevent from marring component surfaces, and can be steam sterilized.



**INNOMED, INC**  
103 Estus Drive  
Savannah, GA 31404

Tel 912.236.0000  
Fax 912.236.7766

innomed.net  
info@innomed.net

**Innomed-Europe LLC**  
Alte Steinhäuserstr. 19  
CH-6330 Cham, Switzerland  
Tel 0041 (0) 41 740 67 74

**Innomed-Europe GmbH**  
Villingen-Schwenningen,  
Deutschland  
Tel 0049 (0) 7720 46110 60

www.innomed-europe.com  
orders@innomed-europe.com

# TOLL FREE 1.800.548.2362



ISO 13485:2016



# INNOMED.NET

info@innomed.net