

# INNOMED

ORTHOPEDIC INSTRUMENTS



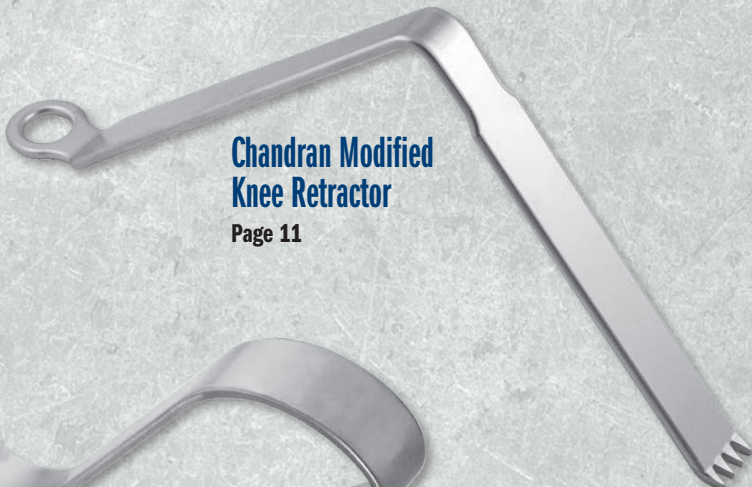
APRIL  
2024



**PCL Retractor - Straight**  
Page 3



**Ortho Self-Retaining  
Retractors**  
Page 19



**Chandran Modified  
Knee Retractor**  
Page 11

Featuring many **New!** instruments throughout



**"S" Total Knee  
Retractors**  
Page 8



**Chandran Thigh Lift Positioner**  
Page 26



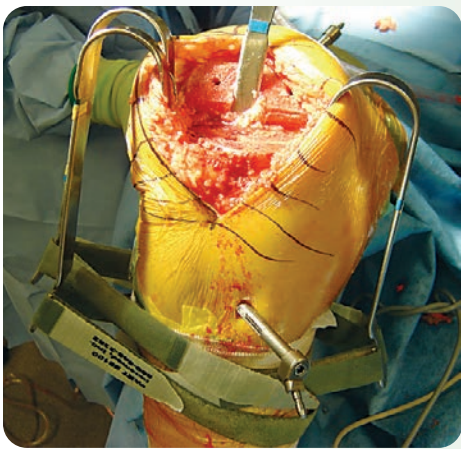
**Powers Flared  
Small Knee Retractor**  
Page 5

## Knee Exposure & Positioning

1.800.548.2362



INNOMED.NET



# Knee Retractor System

Designed by S. David Stulberg, MD

*Helps free assisting personnel while providing excellent exposure*



The Knee Retractor System holds retractors utilizing Velcro® straps. This helps eliminate obstruction of the surgeon's operative area and frees assisting personnel. Four retractor styles are available; straps are available in two lengths. Retractors and straps are autoclavable. The retractors can be used singularly or in combination.

Velcro® is a registered trademark of Velcro U.S.A.



Wide PCL Retractor with Strap

<b>PRODUCT NO:</b>
<b>3525</b>
Overall Length: 10" (25,4 cm)
Blade Width Above Prongs: 57 mm
Prong Width: 8,5 mm   17 mm Gap   8,5 mm



MIS Modified Wide PCL Retractor with Strap

<b>PRODUCT NO:</b>
<b>3515</b>
Overall Length: 10" (25,4 cm)
Blade Width Above Prongs: 34 mm
Prong Width: 8,5 mm   17 mm Gap   8,5 mm



Strap

<b>PRODUCT NO'S:</b>
<b>Packages of 10</b>
<b>8100-P</b> [Long Strap-Femur]
<b>8120-P</b> [Short Strap-Tibia]



Single Prong Collateral Ligament Retractor with Strap

<b>PRODUCT NO:</b>
<b>6650</b>
Overall Length: 8.25" (21 cm)
Blade Width: 14 mm



Long Prong Collateral Ligament Retractor with Strap

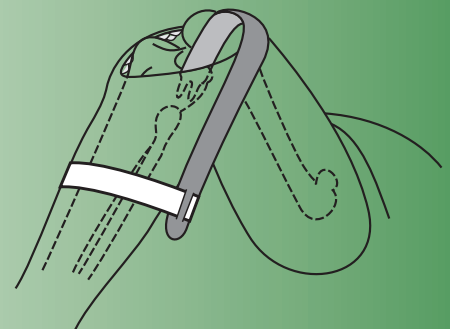
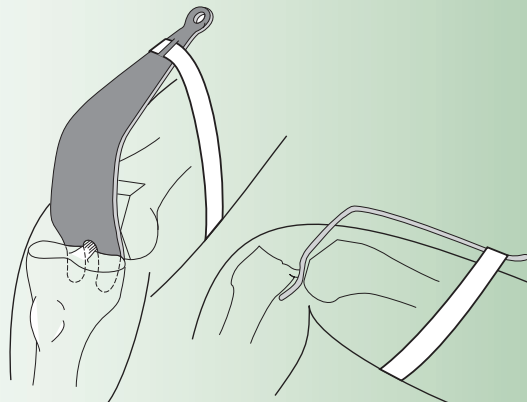
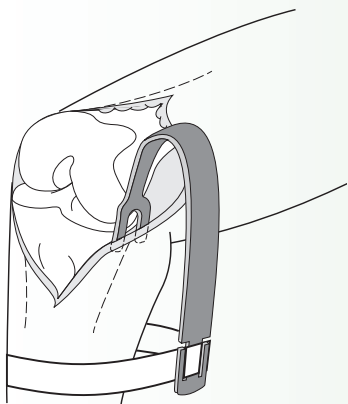
<b>PRODUCT NO:</b>
<b>6630</b>
Overall Length: 8" (20,3 cm)
Overall Blade Width: 21 mm
Prong Width: 4,5 mm   12 mm Gap   4,5 mm



Stubbs Short Prong Collateral Ligament Retractor with Strap

<b>PRODUCT NO:</b>
<b>6640</b>
Overall Length: 8" (20,3 cm)
Blade Width Above Prongs: 27 mm
Prong Width: 4,8 mm   3,4 mm Gap   4,8 mm

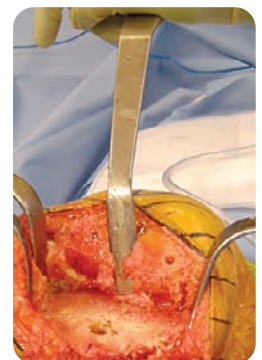
Designed by B. Stubbs, MD



## MIS PCL Retractor

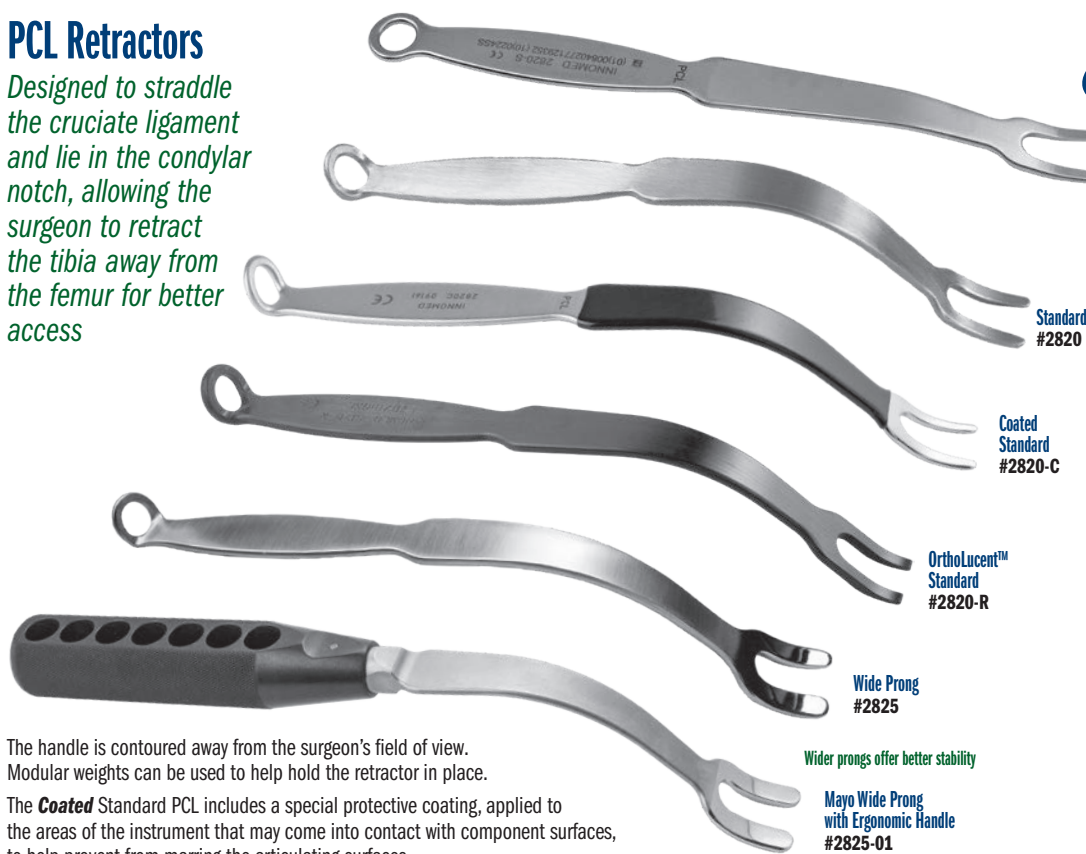
Designed by S. David Stulberg, MD

<b>PRODUCT NO:</b>
<b>6203</b> [Medium]
Overall Length: 12.5" (31,8 cm)
Handle Length: 6" (15,2 cm)
Blade Width: 15 mm



## PCL Retractors

Designed to straddle the cruciate ligament and lie in the condylar notch, allowing the surgeon to retract the tibia away from the femur for better access



**New!**

Straight  
#2820-S

Standard  
#2820

Coated  
Standard  
#2820-C

OrthoLucent™  
Standard  
#2820-R

Wide Prong  
#2825

Wider prongs offer better stability

Mayo Wide Prong  
with Ergonomic Handle  
#2825-01



PRODUCT NO'S:	
<b>2820-S</b> [Straight]	Overall Length: 10.375" (26.3 cm) Prong Width: 5 mm   10 mm Gap   5 mm
<b>2820</b> [Standard]	Overall Length: 9.875" (25.1 cm) Prong Width: 5 mm   10 mm Gap   5 mm
<b>2820-C</b> [Coated Standard]	Overall Length: 9.875" (25.1 cm) Prong Width: 5 mm   10 mm Gap   5 mm
<b>2820-R*</b> [OrthoLucent™ Standard]	Overall Length: 9.875" (25.1 cm) Prong Width: 5 mm   10 mm Gap   5 mm
<b>2825</b> [Wide Prong]	Overall Length: 9.875" (25.1 cm) Prong Width: 8.5 mm   11 mm Gap   8.5 mm
<b>2825-01</b> [Mayo Wide Prong with Ergonomic Handle]	Overall Length: 11" (27.9 cm) Prong Width: 8.5 mm   11 mm Gap   8.5 mm

The handle is contoured away from the surgeon's field of view. Modular weights can be used to help hold the retractor in place.

The **Coated** Standard PCL includes a special protective coating, applied to the areas of the instrument that may come into contact with component surfaces, to help prevent from marring the articulating surfaces.

The **OrthoLucent™** Standard PCL can be safely used to look behind the knee when the component(s) are in place without metal transfer or marring component surfaces when contact is made. It is made of a strong, lightweight carbon fiber PEEK composite material, which is completely radiolucent, and can be steam sterilized.

Designed by Joseph Mayo, MD  
Handle designed by Munish C. Gupta, MD



## MIS Modified Wide PCL Retractor

Designed by S. David Stulberg, MD



PRODUCT NO'S:	
<b>3510</b> [Standard]	Overall Length: 10" (25.4 cm) Blade Width Above Prongs: 34 mm Prong Width: 8.5 mm   17 mm Gap   8.5 mm
<b>3515</b> [With Velcro Strap]	Overall Length: 10" (25.4 cm) Blade Width Above Prongs: 34 mm Prong Width: 8.5 mm   17 mm Gap   8.5 mm



## Modular Weights

Weights can be used to help hold the retractors in place.

PRODUCT NO'S:	
<b>3430-01</b>	1.5 lbs. (.68 kg)
<b>3430-02</b>	2.0 lbs. (.91 kg)
<b>3430-03</b>	2.5 lbs. (1.13 kg) with attaching hook

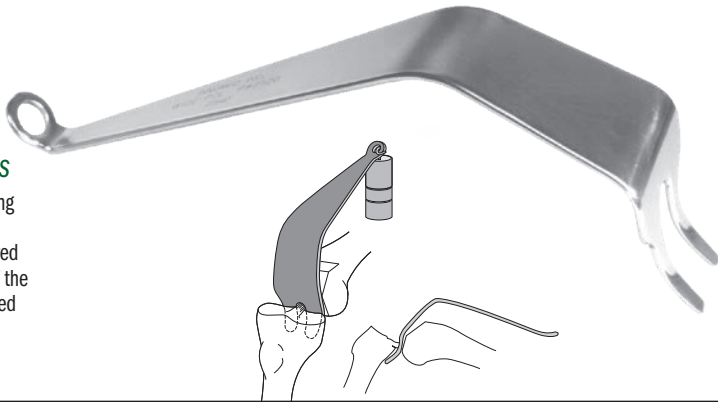


## Wide PCL Retractor

Designed by S. David Stulberg, MD

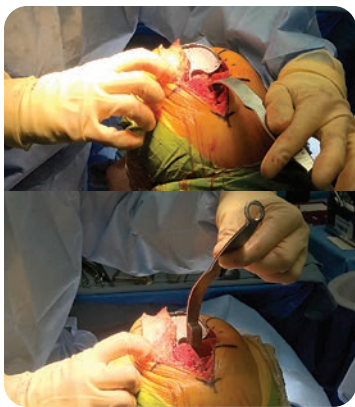
Helps expose the proximal tibia for better surface access

Designed to expose the proximal tibia during total knee surgery for better access to the articulating surfaces. The handle is contoured to allow the surgeon a clear field of view of the operating area. Modular weights can be used to help hold the retractor in place.



PRODUCT NO:	
<b>3520</b>	Overall Length: 10" (25.4 cm) Blade Width Above Prongs: 57 mm Prong Width: 8.5 mm   17 mm Gap   8.5 mm

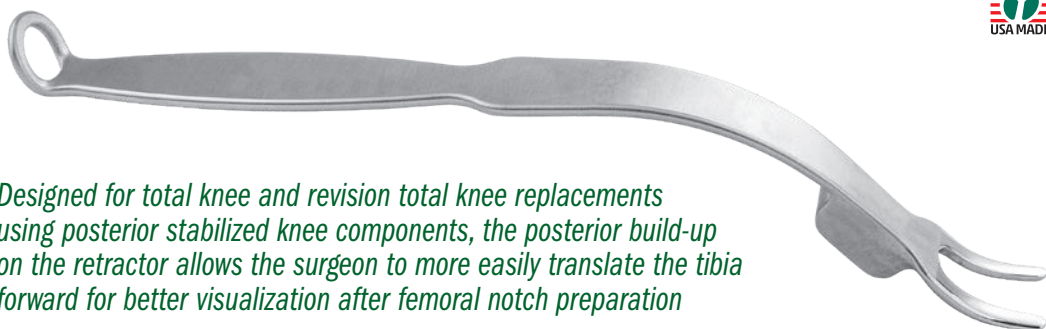




## Rosen Knee Tibial Retractor

Designed modification by Adam Rosen, DO of original design by Christopher M. Meckel, MD

**PRODUCT NO:**  
**2830**  
Overall Length: 12.5" (31,8 cm)



*Designed for total knee and revision total knee replacements using posterior stabilized knee components, the posterior build-up on the retractor allows the surgeon to more easily translate the tibia forward for better visualization after femoral notch preparation*

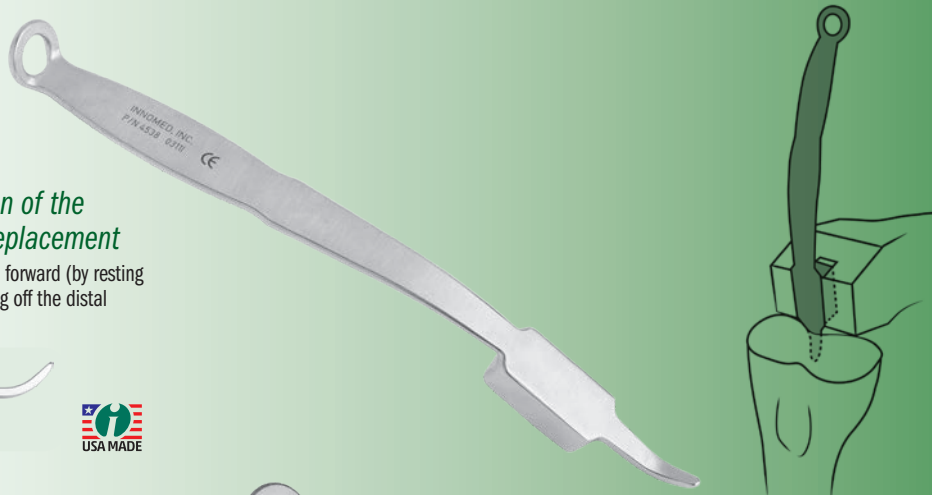
## Meckel Posterior Stabilizing Knee Retractor

Designed by Christopher M. Meckel, MD

*Designed to provide enhanced anterior translation of the tibia when doing posterior stabilized total knee replacement*

The 15 mm deep blade section of the retractor is used to lever the tibia forward (by resting the tip on the posterior tibia and the middle blade section block levering off the distal femur) after the box cut has been made in the distal femur.

**PRODUCT NO:**  
**4538**  
Blade Width: 20 mm  
Blade Depth: 15 mm  
Overall Length: 10" (24,5 cm)

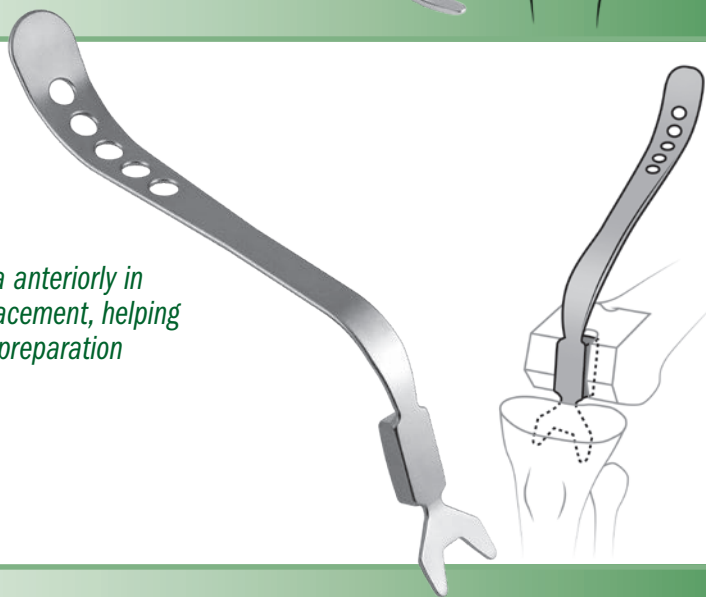


## Manzary Proximal Tibial Stabilizing Knee Retractor

Design modification by Mojib Manzary, MD, FRCS of original design by D. Kevin Lester, MD, and Christopher M. Meckel, MD

*Designed to help sublaxing the tibia anteriorly in posterior stabilizing total knee replacement, helping to expose the proximal surface for preparation*

**PRODUCT NO:**  
**4531**  
Overall Length: 12.75" (32,4 cm)  
Blade Width: 1.5" (3,8 cm)  
Block Dimensions: .8" x 1.5" x .5"  
(2 x 3.8 x 1.25 cm)



**PRODUCT NO:**  
**4699**  
Overall Length: 12" (30,5 cm)  
Depth from Bend: 5" (12,7 cm)  
Blade Width: 1.5" (3,8 cm)



*Helps expose the cut surface of the tibia to allow sizing, preparation and cleansing during TKA*

## Lester Proximal Tibial TKA Retractor

Designed by D. Kevin Lester, MD

Also helps protect the posterior knee soft tissue structures from injury.

## Minimally Invasive Knee Retractors

Helps provide excellent visibility and ligament protection during Total and Unicondylar Knee Replacement Surgery



1 Minimally Invasive Small Hohmann Retractor #S3035

3 Minimally Invasive Condylar Retractor #S3037



2 Minimally Invasive Large Hohmann Retractor #S3036

4 Minimally Invasive Superior Retractor #S3038

PRODUCT NO'S:	
1	<b>S3035</b> [Small Hohmann Retractor] Overall Length: 7.5" (19,1 cm) Blade Width: 25 mm
2	<b>S3036</b> [Large Hohmann Retractor] Overall Length: 8" (20,3 cm) Blade Width: 36 mm
3	<b>S3037</b> [Condylar Retractor] Overall Length: 7.5" (19,1 cm) Blade Width: 12 mm
4	<b>S3038</b> [Superior Retractor] Overall Length: 8.75" (22,2 cm) Blade Width: 31 mm
5	<b>S3039</b> [Patellar Retractor] Overall Length: 10.25" (26 cm) Blade Width: 45 mm

5 Minimally Invasive Patellar Retractor #S3039



**New!**

## Powers Flared Small Knee Retractor

Designed by Mark Powers, MD

A bent knee retractor with a cobra flare to help provide optimal exposure

PRODUCT NO:	
<b>6291</b>	
Overall Length: 8" (20,3 cm) Pad Flare Width: 17 mm Point Length Below Pad: 21 mm	



## 45° Knee Retractors

Designed for use around the knee

PRODUCT NO'S:	
<b>6290-00-075</b>	[Large] Overall Length: 9.125" (23,2 cm)
<b>6290-00-076</b>	[Small] Overall Length: 7.875" (20 cm)
<b>6290-00-077</b>	[Medium] Overall Length: 9.125" (23,2 cm)
<b>6290-00-078</b>	[Medium Straight] Overall Length: 9.125" (23,2 cm)



Large #6290-00-075

Medium Straight #6290-00-078

Medium #6290-00-077

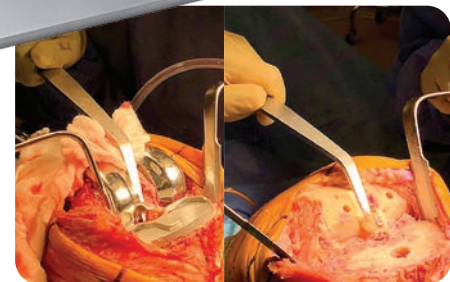
Small #6290-00-076

## Chandran Tibial Knee Retractor

Designed by Rama E. Chandran, MD

Designed for use in TKR, the hook on the front of the blade acts as a stop to help prevent the retractor from deep penetration behind the tibia

PRODUCT NO:	
<b>4533</b>	
Overall Length: 10.5" (26,7 cm) Depth from Bend: 3" (7,6 cm)	



# Harwin Modified Cobra Retractor

Designed by Steven F. Harwin, MD, FACS

*Designed for use during total knee and hip surgery*

The long handle and obtuse angle provide more ergonomic leverage—especially helpful for use with obese patients.

For total knee surgery, the wide blade of the large retractor spans the prepared box and helps bring the tibia forward. The small retractor helps with retraction of the medial and lateral structures, where the wide, concave blade provides added exposure over standard bent Hohmann retractors. The serrated tip helps improve stability.

In total hip surgery, the wide, concave blade design allows for enhanced exposure—especially useful in anterior hip surgery with the placement of reamers, and to elevate and expose the proximal femur.

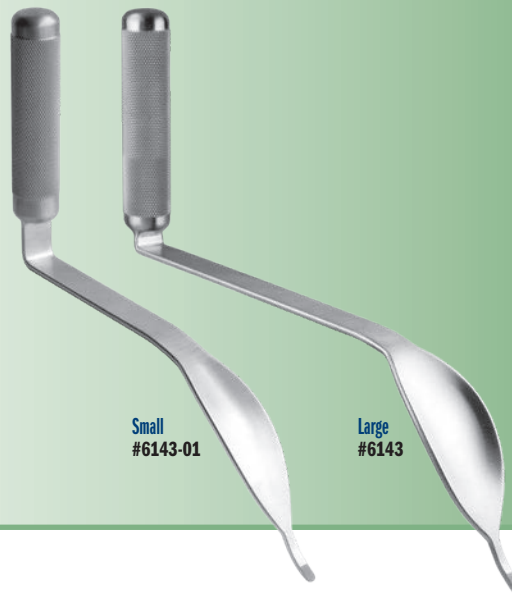
## PRODUCT NO'S:

**6143** [Large]

Overall Length: 14.75" (37.5 cm)  
Horizontal Handle: 8" (20.3 cm)  
Blade Width: 43 mm  
Tongue: 25 mm x 5 mm

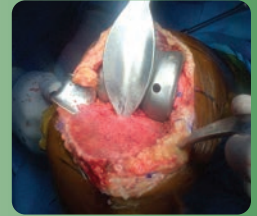
**6143-01** [Small]

Overall Length: 12.5" (31.8 cm)  
Horizontal Handle: 5" (12.7 cm)  
Blade Width: 30 mm  
Tongue: 25 mm x 5 mm



Small  
#6143-01

Large  
#6143



# Narrow Right Angle Retractor

*Designed for soft tissue retraction*

## PRODUCT NO:

**C1011**

Overall Length: 8.5" (21.6 cm)  
Handle Length: 6.75" (17.1 cm)  
Blade Depth: 4.5" (11.4 cm)  
Blade Width: .375" (1 cm)



# Taylor Retractors

## PRODUCT NO'S:

**6330-01** [Standard]

Overall Length: 8" (20.3 cm)  
Depth from Bend: 4" (10.2 cm)  
Blade Width: 32 mm

**6330-02** [Large]

Overall Length: 9" (23 cm)  
Depth from Bend: 5.5" (14 cm)  
Blade Width: 32 mm

**6330-03** [Deep with Pin Guides]

Overall Length: 9" (23 cm)  
Depth from Bend: 5.5" (14 cm)  
Blade Width: 32 mm  
Guide for Pins Up To: .125" (3.2 mm)



Standard  
#6330-01

Deep  
#6330-02

Deep with Pin Guides  
#6330-03

# Modular Weights

*Weights can be used to help hold the retractors in place.*

## PRODUCT NO'S:

**3430-01** 1.5 lbs. (.68 kg)

**3430-02** 2.0 lbs. (.91 kg)

**3430-03** 2.5 lbs. (1.13 kg)  
with attaching hook



# McPherson Retractor Extender

Designed by Ed McPherson, MD

*Designed to extend a standard retractor to help provide additional leverage*

Available in two sizes to accommodate most retractors – standard for retractors up to .125" (3.2 mm) thick, and large for retractors up to .16" (4 mm) thick.

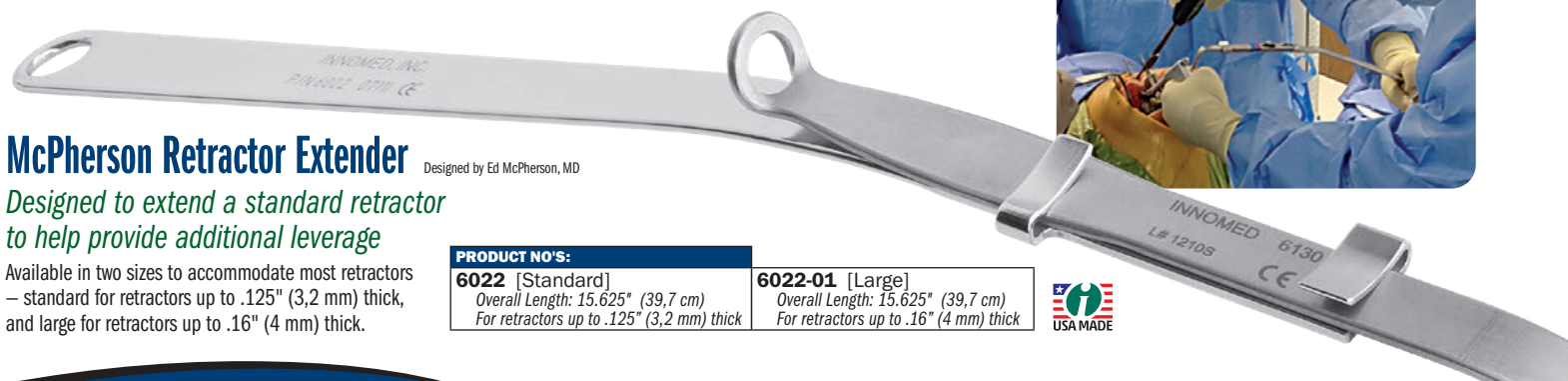
## PRODUCT NO'S:

**6022** [Standard]

Overall Length: 15.625" (39.7 cm)  
For retractors up to .125" (3.2 mm) thick

**6022-01** [Large]

Overall Length: 15.625" (39.7 cm)  
For retractors up to .16" (4 mm) thick



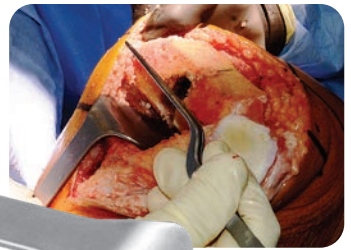
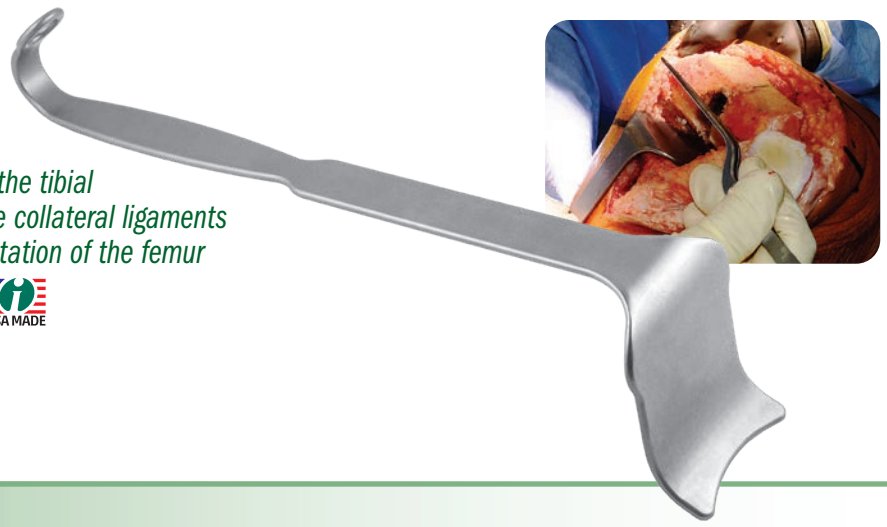


## Booth Knee Retractor

Designed by Robert E. Booth, Jr., MD

*Designed to help protect the tibial surface and to tighten the collateral ligaments and to help assess the rotation of the femur*

<b>PRODUCT NO:</b>
<b>6580</b>
Overall Length: 11.75" (29,8 cm)
Handle Length: 10.5" (26,7 cm)
Blade Depth: 2.75" (7 cm)
Blade Width: 2" (5,1 cm)

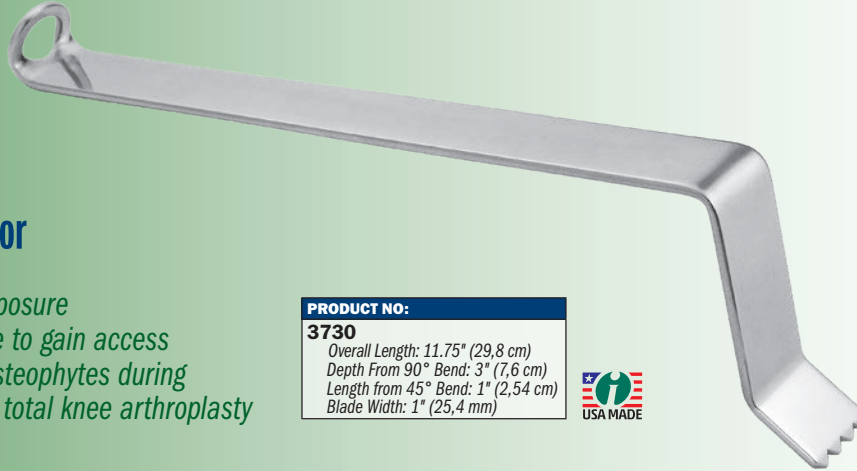


## Glassman Posterior Condylar Osteophyte Retractor

Designed by Andrew Glassman, MD

*Designed to provide exposure of the posterior condyle to gain access to posterior condylar osteophytes during unicompartmental and total knee arthroplasty*

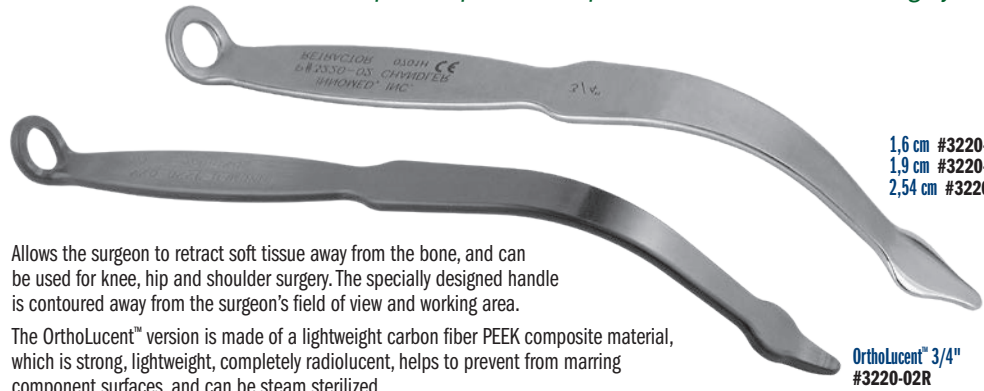
<b>PRODUCT NO:</b>
<b>3730</b>
Overall Length: 11.75" (29,8 cm)
Depth From 90° Bend: 3" (7,6 cm)
Length from 45° Bend: 1" (2,54 cm)
Blade Width: 1" (25,4 mm)



## Chandler Retractor

*Used for retracting tissue away from the bone, and helpful for posterior exposure of the tibia in MIS surgery*

<b>PRODUCT NO'S:</b>
<b>3220-01</b> [5/8"]
Overall Length: 9.875" (25,1 cm)
Blade Width: 5/8" (1,6 cm)
<b>3220-02</b> [3/4"]
Overall Length: 9.875" (25,1 cm)
Blade Width: 3/4" (1,9 cm)
<b>3220-04</b> [1"]
Overall Length: 9.875" (25,1 cm)
Blade Width: 1" (2,54 cm)
<b>3220-02R*</b> [OrthoLucent™ 3/4"]
Overall Length: 9.875" (25,1 cm)
Blade Width: 3/4" (1,9 cm)



Allows the surgeon to retract soft tissue away from the bone, and can be used for knee, hip and shoulder surgery. The specially designed handle is contoured away from the surgeon's field of view and working area.

The OrthoLucent™ version is made of a lightweight carbon fiber PEEK composite material, which is strong, lightweight, completely radiolucent, helps to prevent from marring component surfaces, and can be steam sterilized.

1,6 cm #3220-01  
1,9 cm #3220-02  
2,54 cm #3220-03



OrthoLucent™ 3/4"  
#3220-02R



*Used for retracting tissue away from the bone*

## Bolanos Modified Chandler Retractor

Designed by Alberto Bolanos, MD

<b>PRODUCT NO:</b>
<b>3222</b>
Overall Length: 7.5" (19,1 cm)
Blade Width at Widest: 1" (2,54 cm)





Excellent for minimally  
invasive knee procedures

Wide  
#3720-00

Narrow  
#3720-01

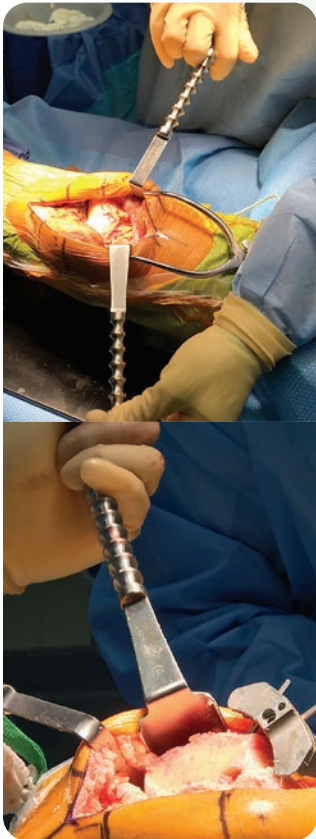
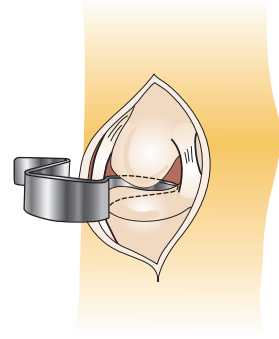
## "S" Total Knee Retractors

Designed by R. Barry Sorrells, MD

*Helps protect the collateral ligaments  
and popliteal structures while providing  
excellent visualization within the knee joint*

The design is self-retaining and can be used singularly and in pairs. For cruciate sparing or sacrificing prosthetic designs.

PRODUCT NO'S:
<b>3720-00</b> [Wide Blade] Overall Length: 6" (15,2 cm) Blade Width: 20 mm
<b>3720-01</b> [Narrow Blade] Overall Length: 6" (15,2 cm) Blade Width: 10 mm



## Rosen Double Ended Army-Navy/'Z' Retractor

Designed By Adam Rosen, DO

*Helps to reduce the number of  
instruments on the field and  
to limit the need for passing  
instruments during the case*

## Rosen Double Ended Richardson Retractor

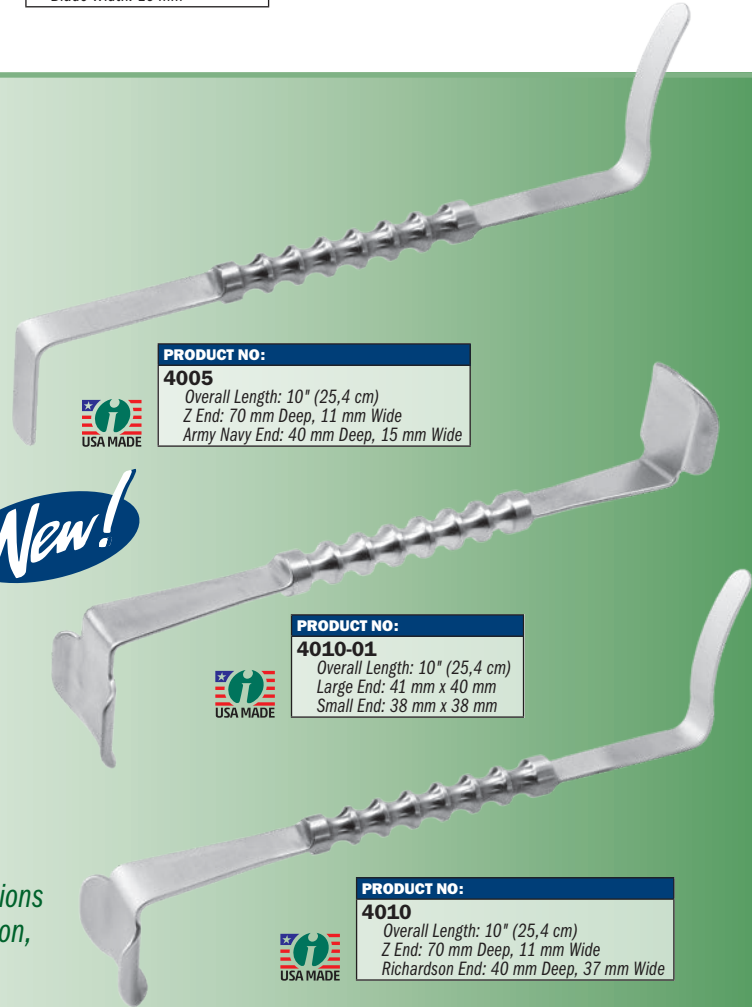
Designed by Adam Rosen, DO

*Designed to help with exposure  
and soft tissue protection*

## Rosen Double Ended Richardson/'Z' Retractor

Designed by Adam Rosen, DO

*Can be used in a variety of positions  
for exposure, soft tissue protection,  
and when making cuts*



PRODUCT NO:
<b>4005</b> Overall Length: 10" (25,4 cm) Z End: 70 mm Deep, 11 mm Wide Army Navy End: 40 mm Deep, 15 mm Wide



**New!**

PRODUCT NO:
<b>4010-01</b> Overall Length: 10" (25,4 cm) Large End: 41 mm x 40 mm Small End: 38 mm x 38 mm



PRODUCT NO:
<b>4010</b> Overall Length: 10" (25,4 cm) Z End: 70 mm Deep, 11 mm Wide Richardson End: 40 mm Deep, 37 mm Wide



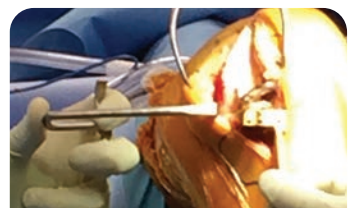
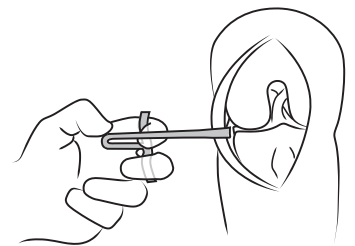
## Uni Medial/Lateral Ligament Retractor

Designed by Kurt Kramer, PA-C

*Designed to be placed in the medial/lateral tibial  
recess while making the horizontal tibial cut during  
unicompartmental knee arthroplasty—helping to retract  
and protect the medial and lateral collateral ligaments*

Ambidextrous, ergonomic design allows for comfortable and natural hand positioning, helping to improve MCL/LCL protection and ease of use, especially in the obese patient.

PRODUCT NO:
<b>3632</b> Overall Length: 4.25" (10,8 cm) Blade Width: 8.8 mm Blade Depth: 2.375" (6 cm)

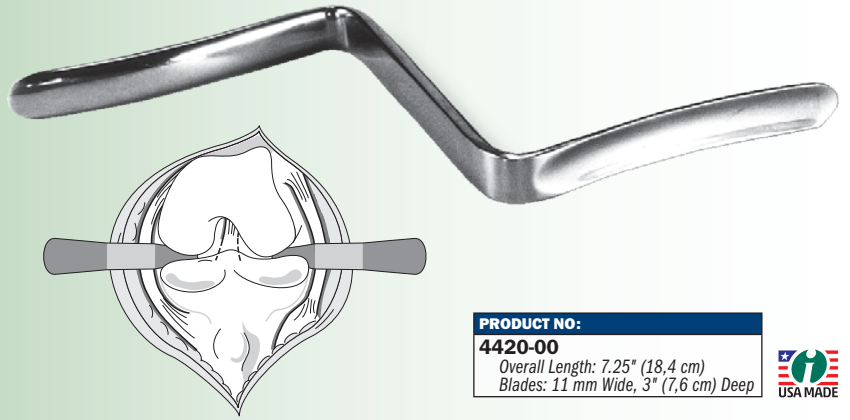
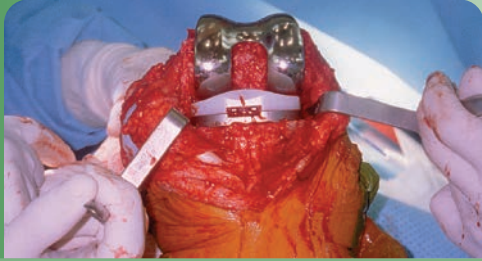




# "Z" Knee Retractor

*Helps create better access to the articulating surfaces*

Designed to expose the femur and the tibia during knee surgery for better access to the articulating surfaces. The "Z" contouring of the retractor provides the surgeon with an open field of view and working area.



**PRODUCT NO:**  
**4420-00**  
 Overall Length: 7.25" (18,4 cm)  
 Blades: 11 mm Wide, 3" (7,6 cm) Deep



# Engl Intercondylar Notch Retractors

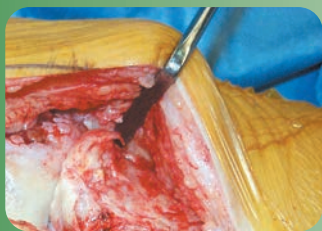
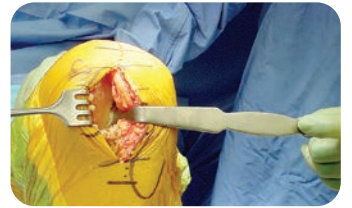
Designed by Gerard A. Engl, MD

*Enhances minimally invasive exposure of the medial femoral condyle*

**PRODUCT NO'S:**  
**3230-01** [Small]  
 Blade Width at Teeth: 9 mm  
 Depth from Bend: 2.25" (5,7 cm)  
 Overall Length: 8.125" (20,6 cm)  
**3230-02** [Medium]  
 Blade Width at Teeth: 10 mm  
 Depth from Bend: 2.25" (5,7 cm)  
 Overall Length: 8.125" (20,6 cm)  
**3230-03** [Large]  
 Blade Width at Teeth: 12 mm  
 Depth from Bend: 2.25" (5,7 cm)  
 Overall Length: 8.125" (20,6 cm)



*Used for unicondylar arthroplasty*

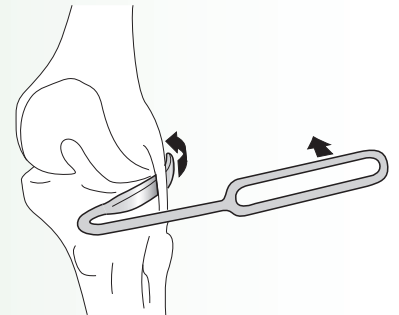
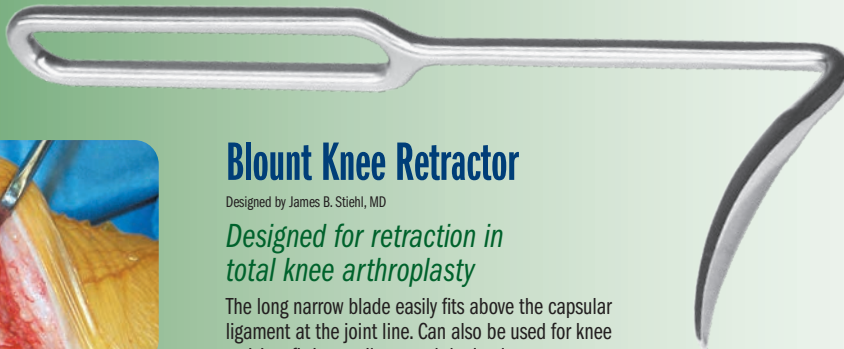


# Blount Knee Retractor

Designed by James B. Stiehl, MD

*Designed for retraction in total knee arthroplasty*

The long narrow blade easily fits above the capsular ligament at the joint line. Can also be used for knee revision, fitting easily around the implant.



**PRODUCT NO:**  
**4850**  
 Overall Length: 8.5" (21,6 cm)  
 Prong Width: 9 mm



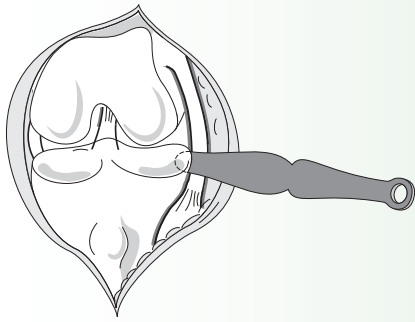
# Blount Retractor with Small Handle

Designed by Ronald Romanelli, MD

*A blount retractor with a lightweight ergo dynamic handle designed for tissue retraction and closure assistance in knee, shoulder, and hip arthroplasty*

**PRODUCT NO:**  
**4852**  
 Overall Length: 9.375" (25,1 cm)  
 Handle Length: 4.625" (11,7 cm)  
 Blade Depth: 1.5" (3,8 cm)  
 Blade Width at Widest: .325" (8,3 mm)





PRODUCT NO'S:	
<b>6720</b> [Standard]	Overall Length: 9.625" (24,4 cm) Blade Width: 15 mm
<b>6720-01</b> [Narrow]	Overall Length: 9.625" (24,4 cm) Blade Width: 9 mm



## Concave Total Knee Retractor

*Used to retract soft tissue away from the femur and tibia*

Used during total knee surgery to retract soft tissue away from the femur and tibia. The blade is designed to curve around the distal femur and tibia plateau.

## Knee Retractors with Easy Grip Handles

Retractors help provide excellent visibility and ligament protection during total and unicondylar knee replacement surgery.

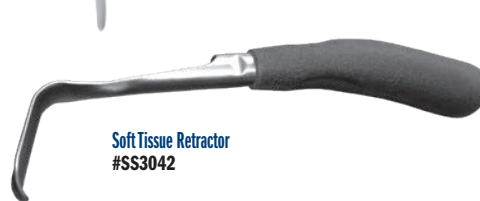
PRODUCT NO'S:	
<b>SS3035</b> [Small Hohmann Retractor]	Overall Length: 7" (17,8 cm) Blade Width: 25 mm
<b>SS3037</b> [Condylar Retractor]	Overall Length: 7" (17,8 cm) Blade Width: 12 mm
<b>SS3038</b> [Superior Retractor]	Overall Length: 8.25" (21 cm) Blade Width: 31 mm
<b>SS3042</b> [Soft Tissue Retractor]	Overall Length: 8.25" (21 cm) Blade Width: 36 mm



Small Hohmann Retractor  
#SS3035



Condylar Retractor  
#SS3037

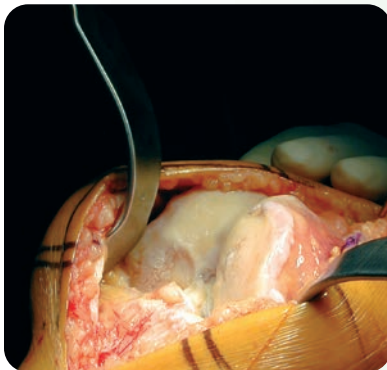


Soft Tissue Retractor  
#SS3042



Superior Retractor  
#SS3038

*Silicone handles help reduce holding fatigue*



## MIS Patella Retractor

Designed by William Robb, MD

PRODUCT NO:	
<b>3220-05</b>	Overall Length: 9" (22,9 cm) Patella Pad Width at Widest: 22 mm Lower Blade Width at Widest: 16 mm



## AORI Patellar Retractor

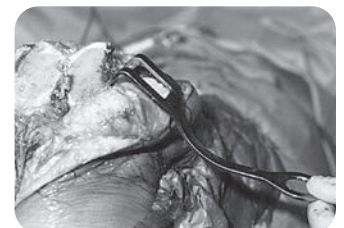
Designed by Gerard A. Engh, MD

*Designed to enhance exposure during total knee arthroplasty, the retractor has a deep basket and two rows of teeth to grab and hold to the lateral side of the patella*

The curved handle provides a fulcrum so that the applied force will both displace and evert the patella from the femur. The patellar retractor is placed after a routine midline, midvastus, or medial para patellar surgical approach to the knee. Once the patella is everted the patellar retractor is applied to the lateral border of the patella.



PRODUCT NO:	
<b>4690</b>	Overall Length: 7" (17,8 cm) Prong Width: 10 mm   22 mm Gap   10 mm



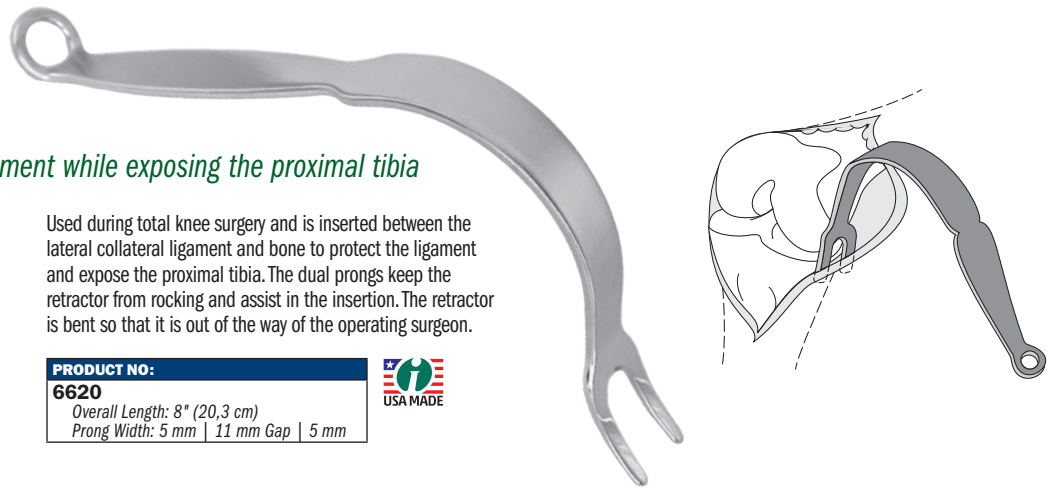
## Collateral Ligament Retractor

Helps protect the lateral collateral ligament while exposing the proximal tibia



Used during total knee surgery and is inserted between the lateral collateral ligament and bone to protect the ligament and expose the proximal tibia. The dual prongs keep the retractor from rocking and assist in the insertion. The retractor is bent so that it is out of the way of the operating surgeon.

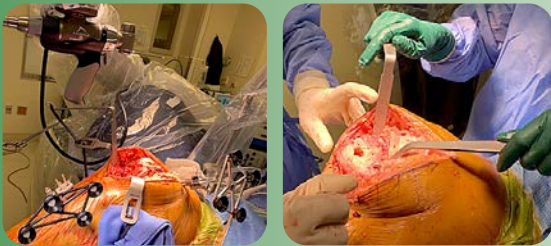
<b>PRODUCT NO:</b>
<b>6620</b>
Overall Length: 8" (20,3 cm)
Prong Width: 5 mm   11 mm Gap   5 mm



## Chandran Modified Knee Retractor

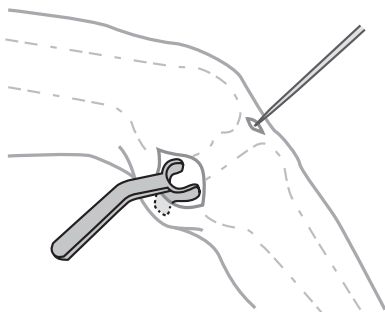
Designed by Rama E. Chandran, MD

Designed to help protect the patellar tendon during robotic assisted total knee replacement



Also useful to retract structures on the lateral side of the tibia.

<b>PRODUCT NO:</b>
<b>7117</b>
Overall Length: 8.75" (22,2 cm)
Blade Width: .625" (1,6 cm)
Blade Depth from Handle: 5" (12,7 cm)



<b>PRODUCT NO:</b>
<b>2731</b>
Overall Length: 5" (12,7 cm)
Depth: 1.625" (4,1 cm)
Diameter: 28 mm

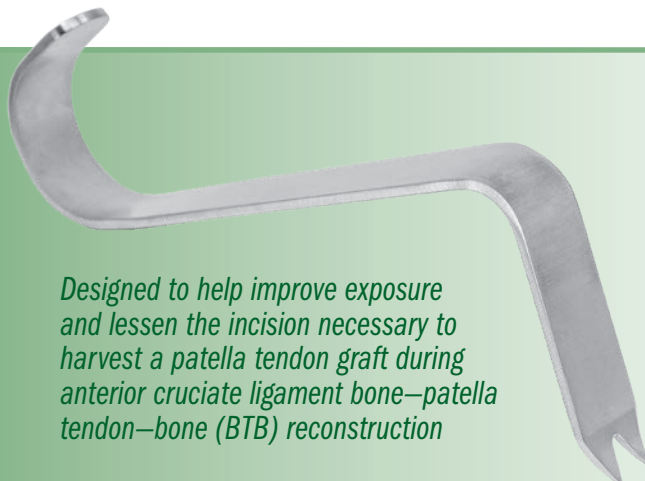
## Bicos Meniscal Repair Retractor

Designed by James Bicos, MD

A popliteal retractor specifically designed for meniscal repair or access to the posterior knee

Used when an inside out meniscal repair is indicated, the design facilitates retracting the posterior soft tissues of the popliteal fossa out of the way, allowing passage of meniscal repair needles.

The retractor's compact design facilitates a minimally invasive incision. The unique shape helps capture the meniscal repair needles and direct them out of the posterior incision for easy grasping and repair. Incorporates a shiny body to help reflect inside the posterior wound and aid in seeing and retrieving the needles.

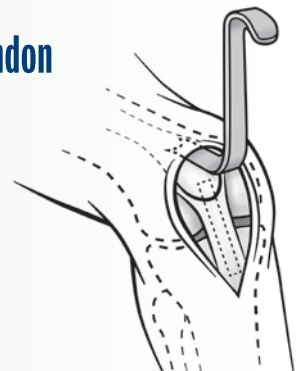


Designed to help improve exposure and lessen the incision necessary to harvest a patella tendon graft during anterior cruciate ligament bone–patella tendon–bone (BTB) reconstruction

## Sherman Patella Tendon Harvest Retractor

Designed by Mark Sherman, MD

<b>PRODUCT NO:</b>
<b>4691</b>
Overall Length: 8.5" (21,6 cm)
Depth from Bend: 3.25" (8,3 cm)
Blade Width: .875" (22 mm)
Prong Length: 10 mm





## Modified Hohmann Retractors

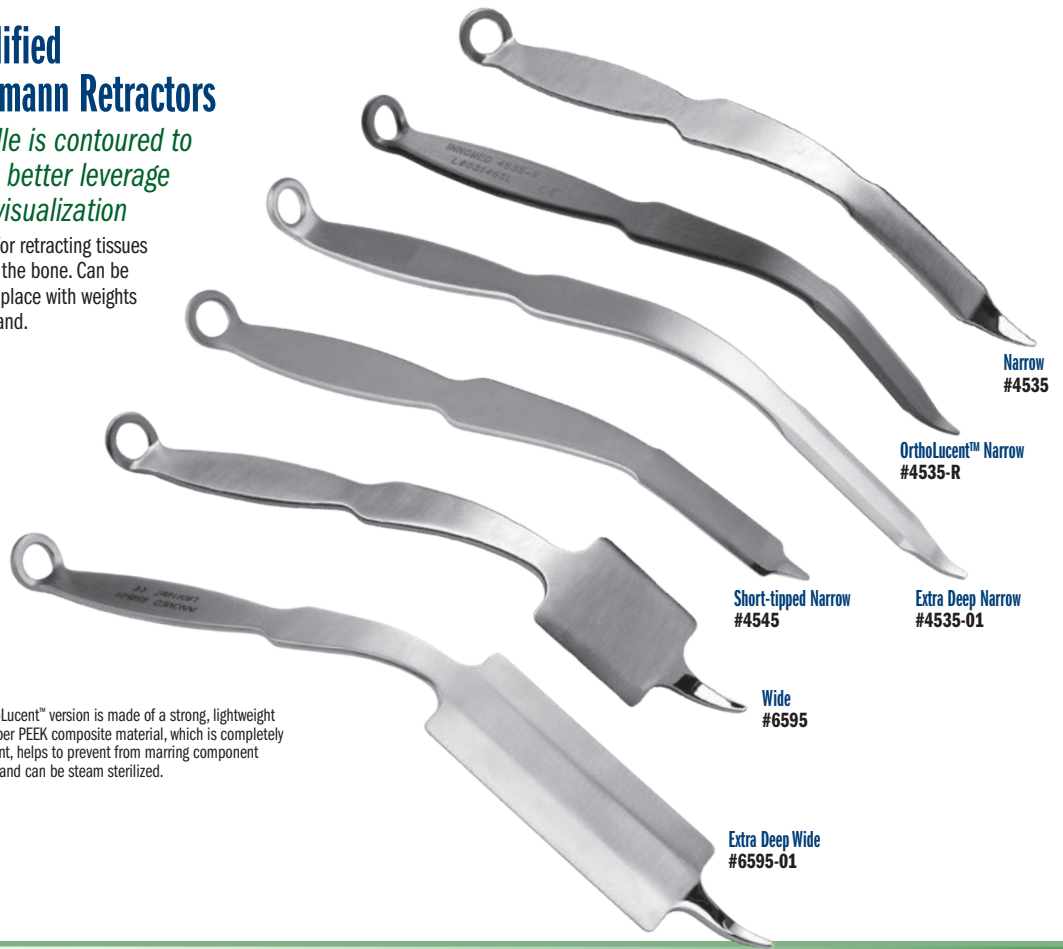
*Handle is contoured to allow better leverage and visualization*

Useful for retracting tissues around the bone. Can be held in place with weights or by hand.

PRODUCT NO'S:	
<b>4535</b> [Narrow]	Overall Length: 10" (25,4 cm) Blade Width: 14 mm
<b>4535-R*</b> [OrthoLucent™ Narrow]	Overall Length: 10" (25,4 cm) Blade Width: 18 mm
<b>4535-01</b> [Extra Deep Narrow]	Overall Length: 11.625" (29,5 cm) Blade Width: 16.4 mm
<b>4545</b> [Short-tipped Narrow]	Designed by Carl DiRaimondo, MD Overall Length: 9.5" (24,1 cm) Blade Width: 14 mm
<b>6595</b> [Wide]	Overall Length: 10" (25,4 cm) Blade Width: 42.5 mm
<b>6595-01</b> [Extra Deep Wide]	Overall Length: 11.5" (29,2 cm) Blade Width: 42.5 mm



\* MADE EXCLUSIVELY FOR INNOMED IN SWITZERLAND



Narrow  
#4535

OrthoLucent™ Narrow  
#4535-R

Short-tipped Narrow  
#4545

Extra Deep Narrow  
#4535-01

Wide  
#6595

The OrthoLucent™ version is made of a strong, lightweight carbon fiber PEEK composite material, which is completely radiolucent, helps to prevent from marring component surfaces, and can be steam sterilized.

Extra Deep Wide  
#6595-01

## OrthoLucent™ Retractors

*Gain Radiolucence Without Compromising Strength or Function*

- ▶ Made of a lightweight carbon fiber PEEK composite material
- ▶ Ideal for total joint use with x-ray
- ▶ Steam sterilizable
- ▶ Completely radiolucent
- ▶ Flat black non-gloss finish
- ▶ No metal transfer with component contact
- ▶ Slightly higher cost than stainless steel

PRODUCT NO'S:	
<b>2820-R</b> [PCL]	Overall Length: 8" (20,3 cm) Prong Width: 5 mm   1.0mm Gap   5 mm
<b>3220-02R</b> [Chandler]	Overall Length: 9.875" (25,1 cm) Blade Width: 3/4" (1,9 cm)
<b>4535-R</b> [Modified Narrow Hohmann]	Overall Length: 10" (25,4 cm) Blade Width: 18 mm
<b>4550-R</b> [Modified Blunt Hohmann]	Blade Width at Widest: 24,5 mm Overall Length: 10.75" (27,3 cm)
<b>4558-R</b> [Standard Hohmann]	Blade Width: 16 mm Overall Length: 9.625" (24,4 cm)
<b>7110-R</b> [Narrow Bent Hohmann]	Overall Length: 9.75" (23,8 cm) Handle Length: 7" (17,8 cm) Blade Width: 19 mm Depth from Bend: 4.75" (12,1 cm)

MADE EXCLUSIVELY FOR INNOMED IN SWITZERLAND

PCL Retractor  
#2820-R

Chandler Retractor  
#3220-02R

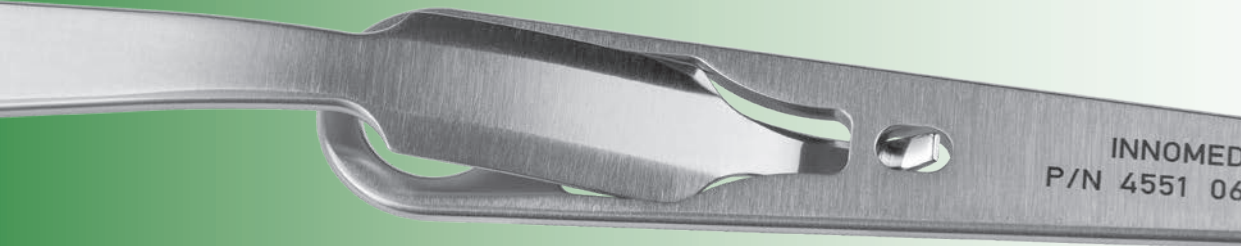
Modified Narrow Hohmann  
#4535-R

Modified Blunt Hohmann  
#4550-R

Standard Hohmann  
#4558-R

Narrow Bent Hohmann  
#7110-R





## Goytia Stackable Hohmann Retractors

Designed by Robin N. Goytia, MD

*Interlocking design helps to increase depth and leverage in hip exposure, particularly of the anterior acetabulum—especially useful with large patients*



**New!**  
DEEP VERSIONS

*2" (5 cm) deeper for use with large patients where extra depth, leverage and force is needed*

PRODUCT NO'S:		
<b>4551 [Standard]</b> Overall Length: 9.25" (23,5 cm) Handle Length: 5.625" (14,3 cm) Blade Width: 19.5 mm	<b>4552 [Bent]</b> Overall Length: 8.25" (20,3 cm) Handle Length: 5.625" (14,3 cm) Blade Width: 19.5 mm	<b>4553 [Wide]</b> Overall Length: 9.25" (23,5 cm) Handle Length: 5.625" (14,3 cm) Blade Width: 43 mm
<b>4551-D [Deep Standard]</b> Overall Length: 11.4" (29 cm) Handle Length: 5.625" (14,3 cm) Blade Width: 20 mm	<b>4552-D [Deep Bent]</b> Overall Length: 9.1" (23,1 cm) Handle Length: 5.625" (14,3 cm) Blade Width: 20 mm	<b>4553-D [Deep Wide]</b> Overall Length: 12" (30,5 cm) Handle Length: 5.625" (14,3 cm) Blade Width: 43 mm

- ▶ Custom fitted holes for interlocking retractors helps provide stability
- ▶ When "stacked", the increased lever arm of the retractor helps reduce fatigue
- ▶ Ideal for use with large patients where extra depth, leverage and force is needed



## Lateral Retraction Handle for Goytia Stackable Hohmann Retractors

Design modification by Brandon Thompson, CST/CFA of original design by Robin N. Goytia, MD

*Designed to allow lateral retraction when added to any of the Goytia stackable hohmann retractors*

**New!**

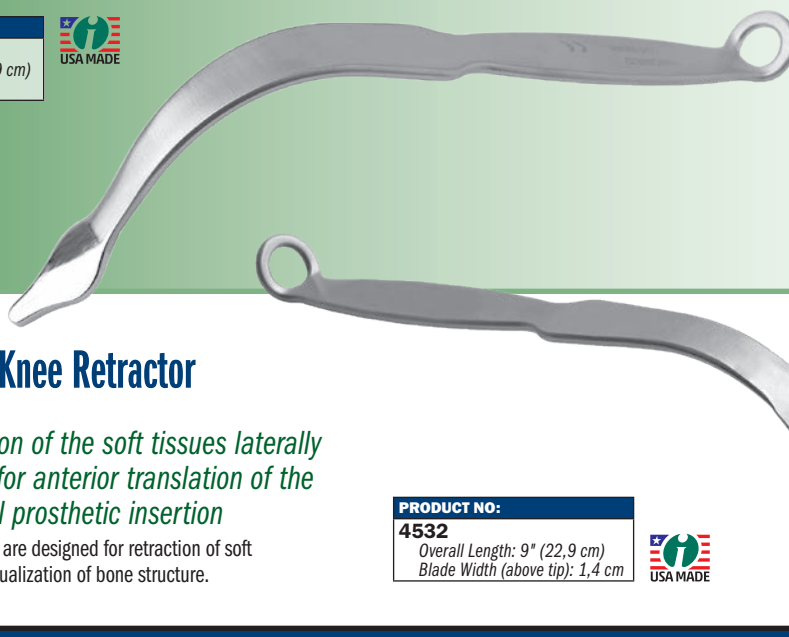


*Goytia stackable hohmann retractor(s) not included.*



**PRODUCT NO:**  
**4551-H**  
Overall Length: 9.25" (23,5 cm)

**PRODUCT NO:**  
**3220-03**  
Overall Length: 9" (22,9 cm)  
Blade Width: 1,6 cm



## MIS Utility Knee Retractor

Designed by William Robb, MD

*Used interchangeably for medial exposure, lateral exposure and to assist in posterior exposure for the tibia*

Helps to keep hands out of the field of view while providing retraction in minimally invasive knee surgery.

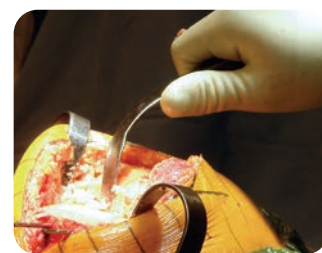
## Roose Utility Knee Retractor

Designed by Paul Roose, DO

*Used for retraction of the soft tissues laterally or medially and for anterior translation of the tibia during tibial prosthetic insertion*

The curvature and width are designed for retraction of soft tissues and excellent visualization of bone structure.

**PRODUCT NO:**  
**4532**  
Overall Length: 9" (22,9 cm)  
Blade Width (above tip): 1,4 cm





## Teurlings Modified Bent Hohmann Retractor

Designed by Luc Teurlings, MD

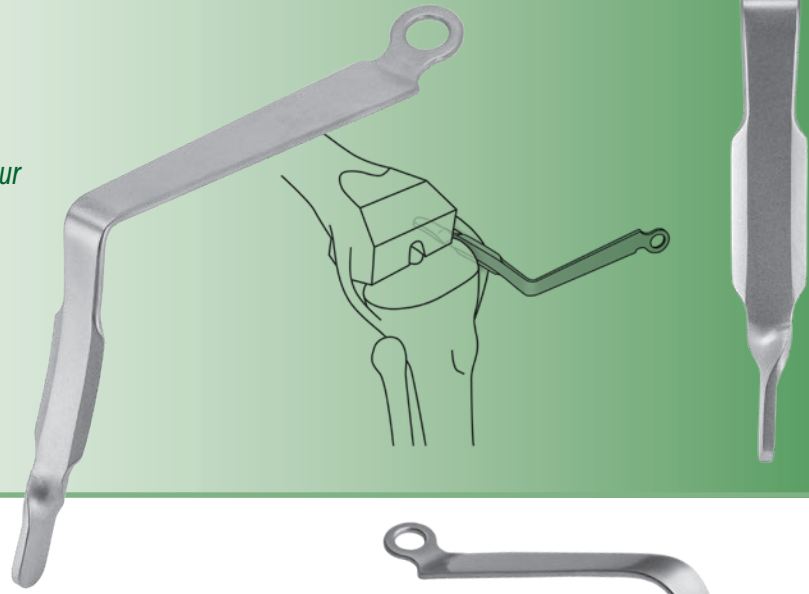
*Designed to help protect the femur cuts while retracting the MCL*

The twisted blunt end also helps elevate the femur and protect the MCL.

**PRODUCT NO:**

**7109**

Overall Length: 8.625" (21,9 cm)  
 Depth from Bend: 4.25" (10,8 cm)  
 Blade Width (Upper Portion): 17 mm  
 Blade Width (Lower Portion): 11 mm



## Bent Hohmann Retractors—Narrow

*Helps retract tissues at the margins of the joint*

The OrthoLucent™ version is made of a strong, lightweight carbon fiber PEEK composite material, which is completely radiolucent, helps to prevent from marring component surfaces, and can be steam sterilized.

**PRODUCT NO'S:**

**7110 [Narrow]**

Overall Length: 9.75" (23,8 cm)  
 Handle Length: 7" (17,8 cm)  
 Blade Width: 19 mm  
 Depth from Bend: 4.75" (12,1 cm)

**7110-R\* [OrthoLucent™ Narrow]**

Overall Length: 9.75" (23,8 cm)  
 Handle Length: 7" (17,8 cm)  
 Blade Width: 19 mm  
 Depth from Bend: 4.75" (12,1 cm)

**7110-01 [XL Handle Narrow]**

Overall Length: 11.5" (29,2 cm)  
 Handle Length: 10" (25,4 cm)  
 Blade Width: 19 mm  
 Depth from Bend: 4.75" (12,1 cm)

**7111 [Narrow w/Extra Grip Tip]**

Overall Length: 9.75" (23,8 cm)  
 Handle Length: 7" (17,8 cm)  
 Blade Width: 19 mm  
 Depth from Bend: 4.25" (10,8 cm)

**7115 [Short-tipped Narrow]**

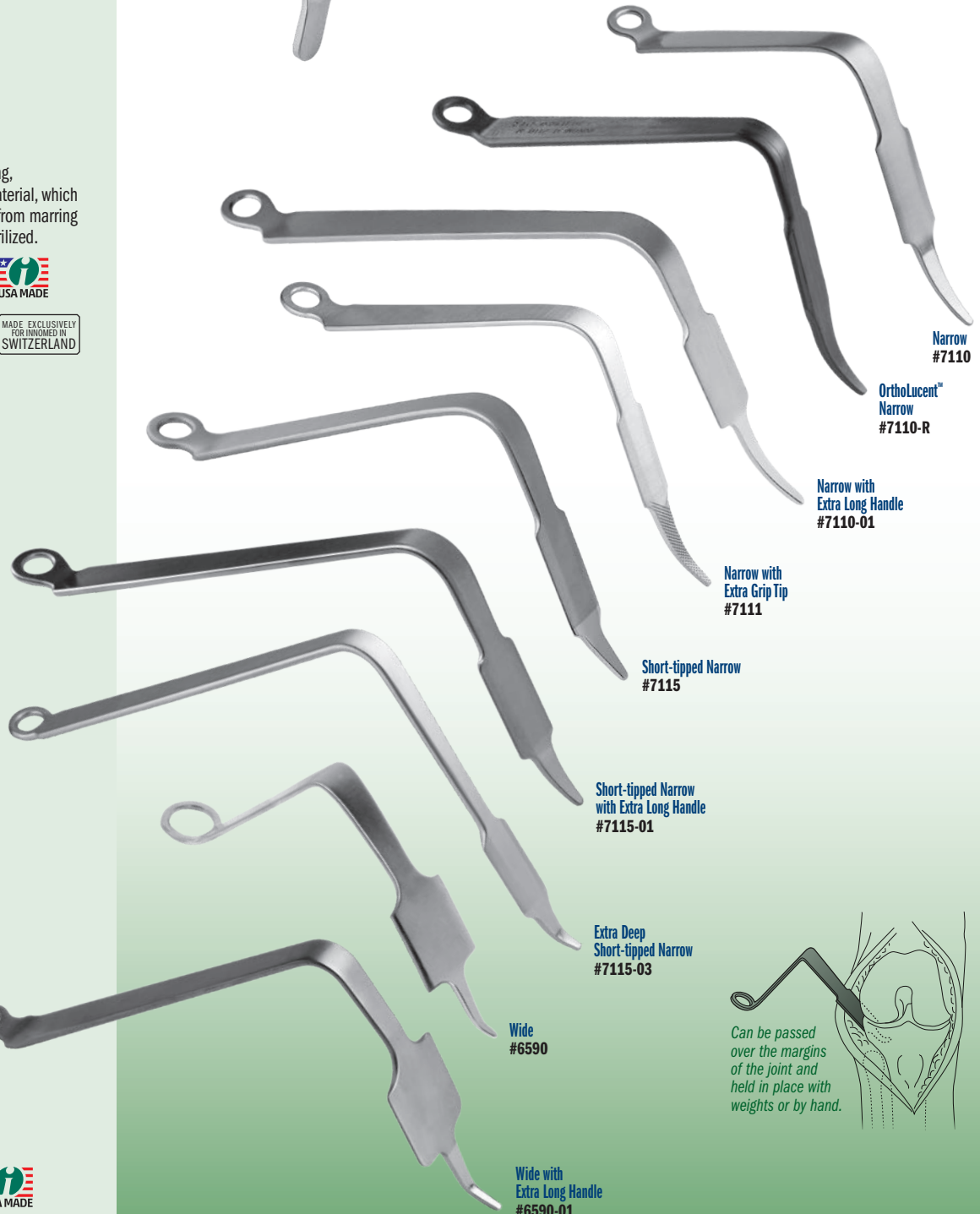
Overall Length: 8.625" (21,9 cm)  
 Handle Length: 7" (17,8 cm)  
 Blade Width: 19 mm  
 Depth from Bend: 4.4" (11,2 cm)

**7115-01 [Short-tipped Narrow Extra Long Handle]**

Overall Length: 11" (27,9 cm)  
 Handle Length: 10" (25,4 cm)  
 Blade Width: 19 mm  
 Depth from Bend: 4.25" (10,8 cm)

**7115-03 [Extra Deep Narrow]**

Overall Length: 12.125" (31,1 cm)  
 Handle Length: 9.75" (24,8 cm)  
 Depth from Bend: 6.25" (15,9 cm)  
 Blade Width: 19 mm



Narrow #7110

OrthoLucent™ Narrow #7110-R

Narrow with Extra Long Handle #7110-01

Narrow with Extra Grip Tip #7111

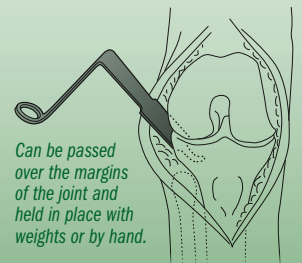
Short-tipped Narrow #7115

Short-tipped Narrow with Extra Long Handle #7115-01

Extra Deep Short-tipped Narrow #7115-03

Wide #6590

Wide with Extra Long Handle #6590-01



Can be passed over the margins of the joint and held in place with weights or by hand.

Extra Grip Tip design modification by Alfred A. Durham, MD  
 Short-tipped design modification by Carl DiRaimondo, MD

## Bent Hohmann Retractors—Wide

**PRODUCT NO'S:**

**6590 [Wide]**

Overall Length: 9.375" (23,8 cm)  
 Handle Length: 7" (17,8 cm)  
 Blade Width: 41 mm  
 Depth from Bend: 4.75" (12,1 cm)

**6590-01 [Extra Long Handle]**

Overall Length: 11" (27,9 cm)  
 Handle Length: 9" (22,9 cm)  
 Blade Width: 41 mm  
 Depth from Bend: 5.5" (14 cm)





## Modified Angled Hohmann Retractor with Long Handle and Short Tip

Designed by R. Michael Meneghini, MD

*Longer handle to help provide safe patella retraction with excellent ergonomics, and useful in other orthopedic procedures*

Excellent for gently retracting the patella and extensor mechanism on heavy obese patients and muscular male patients.



PRODUCT NO:	
<b>7119</b>	
Overall Length:	11.5" (29,2 cm)
Handle Length:	9.25" (23,5 cm)
Blade Depth:	5" (12,7 cm)
Blade Width:	.75" (19 mm)
Prong Depth:	1" (2,54 cm)



## Hohmann Retractor

*Designed like the original Hohmann-style retractor*

The OrthoLucent™ version is made of a strong, lightweight carbon fiber PEEK composite material, which is completely radiolucent, helps to prevent from marring component surfaces, and can be steam sterilized.



Standard  
#4558

OrthoLucent™  
#4558-R

Extra Deep  
#4558-01



\*OrthoLucent™



PRODUCT NO'S:	
<b>4558</b> [Standard]	Blade Width: 16 mm Overall Length: 9.46" (24 cm)
<b>4558-R*</b> [OrthoLucent™]	Blade Width: 16 mm Overall Length: 9.46" (24 cm)
<b>4558-01</b> [Extra Deep]	Blade Width: 16,7 mm Overall Length: 11.5" (29,2 cm)

## Modified Blunt Hohmann Retractor

*Used for soft tissue retraction*

The OrthoLucent™ version is made of a strong, lightweight carbon fiber PEEK composite material, which is completely radiolucent, helps to prevent from marring component surfaces, and can be steam sterilized.



Standard  
#4550

OrthoLucent™  
#4550-R

Extra Deep  
#4550-01



\*OrthoLucent™



PRODUCT NO'S:	
<b>4550</b> [Standard]	Blade Width at End: 11 mm Overall Length: 10.75" (27,3 cm)
<b>4550-R*</b> [OrthoLucent™]	Blade Width at Widest: 24,5 mm Overall Length: 10.75" (27,3 cm)
<b>4550-01</b> [Extra Deep]	Blade Width at End: 11 mm Overall Length: 13.25" (33,7 cm)



PRODUCT NO:	
<b>4539</b>	
Overall Length:	10" (25,4 cm)
Blade Width:	.85" (21,5 mm)



## Wetzel Modified Hohmann Retractor

Designed by Robert Wetzel, MD and Todd McKinley, MD

*The long point is designed to be placed around, on, or through a bony structure and then levered back to retract tissue*

The handle is contoured to allow better leverage and visualization. Can be held in place with weights or by hand.

## Baldwin Lateral Soft Tissue Retractor

Designed by James L. Baldwin, MD

*Designed to hold back the fat pad and soft tissues during total knee arthroplasty*

The fenestrated paddle helps hold back the fat pad and soft tissues, while the two long narrow prongs help penetrate the soft tissue, and rest against the side of the tibia to help prevent rotation of the instrument.



### PRODUCT NO:

**6312** [Sharp Prongs]  
Overall Length: 9.875" (25,1 cm)  
Pad Dimensions: 38 mm x 15 mm  
Prong Depth: 22 mm

**6313** [Blunt Prongs]  
Overall Length: 9.75" (24,8 cm)  
Pad Dimensions: 38 mm x 15 mm  
Prong Depth: 20 mm



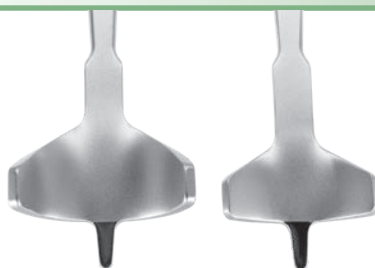
Sharp  
#6312

Blunt  
#6313

## Modified Short Tip Fat Pad Retractors

Designed by Robert Wubben, MD, with modification by Mojieb Manzary, MD, FRCSC

*Designed to help with soft tissue and fat pad retraction in the smaller knee, the blunted, shortened end of the pointed keel helps provide protection against bony perforation*



### PRODUCT NO'S:

**3217-L** [Large]  
Overall Length: 9.625" (24,4 cm)  
Prong Length: 12 mm

**3217-S** [Small]  
Overall Length: 9.625" (24,4 cm)  
Prong Length: 12 mm



Large  
#3217-L

Small  
#3217-S



### PRODUCT NO'S:

**3219-00** [Set]

Also available individually:

**3219-L** [Left]  
Overall Length: 10" (25,4 cm)  
Prong Length: 20 mm

**3219-R** [Right]  
Overall Length: 10" (25,4 cm)  
Prong Length: 20 mm



Left  
#3219-L

Right  
#3219-R

## Modified TKA Retractor Set

Designed by Robert Wubben, MD, with modification by David Ott, MD

*Designed for soft tissue retraction, the reduced phalange allows for ease of placement in the lateral gutter, and helps avoid contact with the lateral condyle*



### PRODUCT NO:

**3218**  
Overall Length: 10" (25,4 cm)  
Blade Width: 41 mm



## Wubben Lateral Fat Pad Retractor for TKR

Designed by Robert Wubben, MD

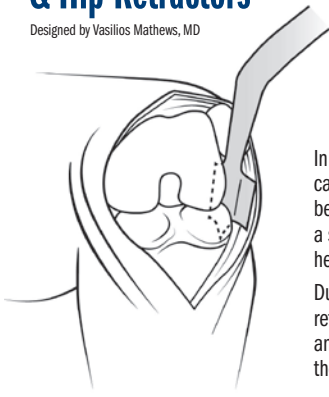
*Designed to hold soft tissues when inserting the TKR*





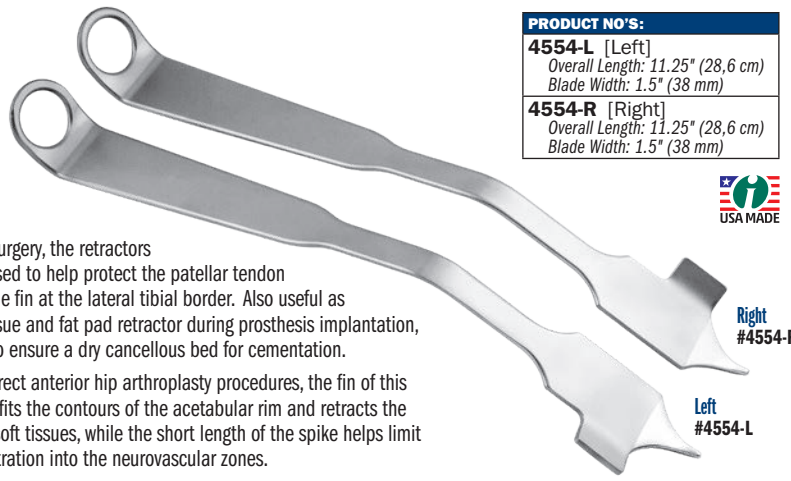
# Multi-Purpose Knee & Hip Retractors

Designed by Vasilios Mathews, MD

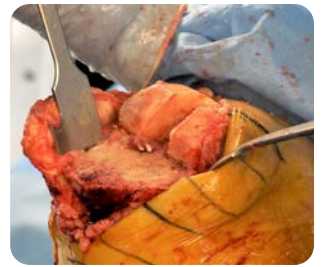


In knee surgery, the retractors can be used to help protect the patellar tendon behind the fin at the lateral tibial border. Also useful as a soft-tissue and fat pad retractor during prosthesis implantation, helping to ensure a dry cancellous bed for cementation.

During direct anterior hip arthroplasty procedures, the fin of this retractor fits the contours of the acetabular rim and retracts the anterior soft tissues, while the short length of the spike helps limit the penetration into the neurovascular zones.



PRODUCT NO'S:	
<b>4554-L</b> [Left]	Overall Length: 11.25" (28,6 cm) Blade Width: 1.5" (38 mm)
<b>4554-R</b> [Right]	Overall Length: 11.25" (28,6 cm) Blade Width: 1.5" (38 mm)

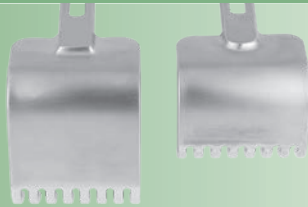


Designed for use in both knee and hip arthroplasty procedures

# Wide Rake Retractors with Ergonomic Handle

Designed for general use soft tissue retraction, the ergonomic handle allows for a better grip and less fatigue

Non-glare finish featured on the metal retractor parts.

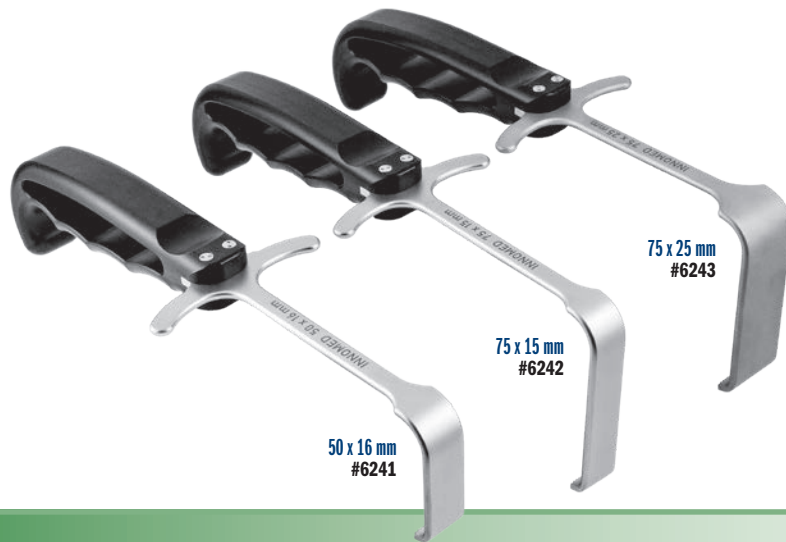


PRODUCT NO'S:	
<b>6051</b> [Deep, Sharp]	Overall Length: 11.175 (28,3 cm) Blade Width: 2.375" (6 cm) Blade Depth: 2.75" (7 cm)
<b>6052</b> [Deep, Blunt]	Overall Length: 11.175 (28,3 cm) Blade Width: 2.375" (6 cm) Blade Depth: 2.75" (7 cm)
<b>6053</b> [Shallow, Sharp]	Overall Length: 11.175 (28,3 cm) Blade Width: 2.375" (6 cm) Blade Depth: 1.875" (4,8 cm)
<b>6054</b> [Shallow, Blunt]	Overall Length: 11.175 (28,3 cm) Blade Width: 2.375" (6 cm) Blade Depth: 1.875" (4,8 cm)



Sharp and dull teeth available in two depths

Deep, Sharp #6051  
Deep, Blunt #6052  
Shallow, Sharp #6053  
Shallow, Blunt #6054



50 x 16 mm #6241

75 x 15 mm #6242

75 x 25 mm #6243



# Meyering Type Retractors with Ergonomic Handle

Designed for general use soft tissue retraction, the ergonomic handle allows for a better grip and less fatigue

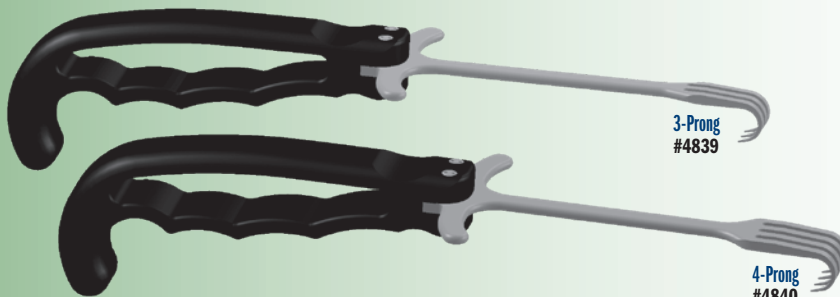
Non-glare finish featured on the metal retractor parts.

PRODUCT NO'S:	
<b>6241</b> [50 x 16 mm]	Overall Length: 8.875" (22,5 cm) Blade Width: 16 mm Blade Depth: 50 mm
<b>6242</b> [75 x 15 mm]	Overall Length: 9" (22,9 cm) Blade Width: 15 mm Blade Depth: 75 mm
<b>6243</b> [75 x 25 mm]	Overall Length: 9" (22,9 cm) Blade Width: 25 mm Blade Depth: 75 mm



# Rake Retractors with Ergonomic Handle

Designed for general use soft tissue retraction



3-Prong #4839

4-Prong #4840

PRODUCT NO'S:	
<b>4839</b> [3-Prong]	Overall Length: 9.5" (24,1 cm) Rake Width: 13 mm Rake Depth: 14 mm
<b>4840</b> [4-Prong]	Overall Length: 9.5" (24,1 cm) Rake Width: 19 mm Rake Depth: 14 mm

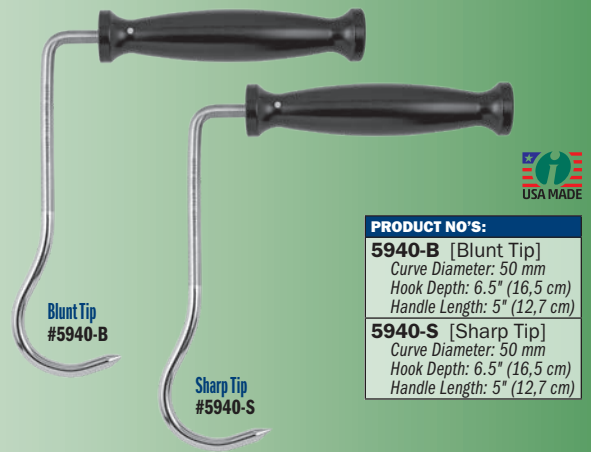




## 90° Bone Hook Designed by Charles Taunt, DO

*Designed to ergonomically help the surgical assistant elevate the proximal femur during TKA, the bone hook aids the surgeon in accessing posterior osteophytes and in applying local anesthetic to the posterior capsule*

Takes the place of an intramedullary device when the IM canal has not been opened (robotic assistance) or when damaged or osteopenic bone is of concern.



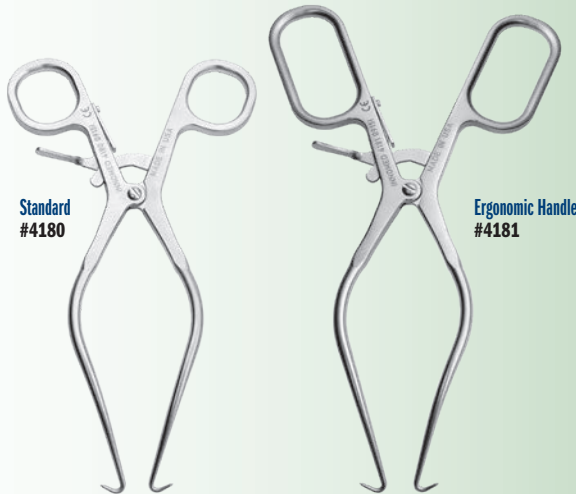
PRODUCT NO'S:	
<b>5940-B</b> [Blunt Tip]	Curve Diameter: 50 mm Hook Depth: 6.5" (16,5 cm) Handle Length: 5" (12,7 cm)
<b>5940-S</b> [Sharp Tip]	Curve Diameter: 50 mm Hook Depth: 6.5" (16,5 cm) Handle Length: 5" (12,7 cm)

## Distal Femur Distractor

*Helps distract the distal femur away from the proximal tibia*

Designed to distract the distal femur away from the proximal tibia during total knee surgery. It is inserted into a pre-drilled hole in the distal femur. The bent handle allows the femur to be distracted away from the tibia. The intramedullary rod portion is fluted.

PRODUCT NO'S:	
<b>4220-00</b> [Standard Handle]	Overall Length: 12.75" (32,4 cm) Rod Offset from Handle: 4.5" (11,4 cm)
<b>4220-01</b> [Upward Bent Handle]	Overall Length: 17.5" (49,6 cm) Rod Length from Bend: 12.75" (32,4 cm) Rod Offset from Handle: 4.5" (11,4 cm)



## Gelpi Retractors

PRODUCT NO'S:	
<b>4180</b> [Standard]	Overall Length: 7.75" (19,7 cm)
<b>4181</b> [With Ergonomic Handle]	Overall Length: 8.75" (22,2 cm)

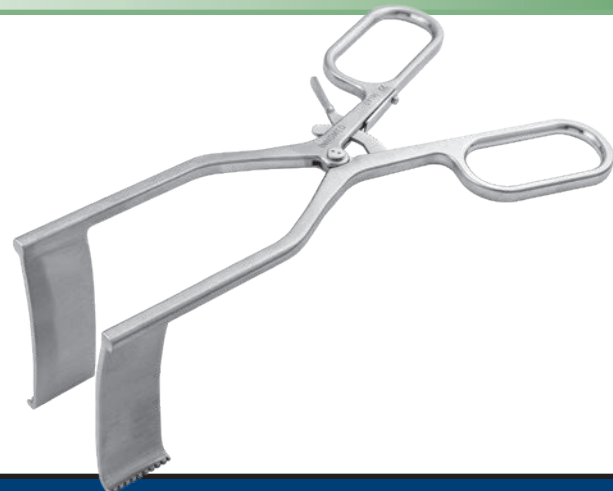


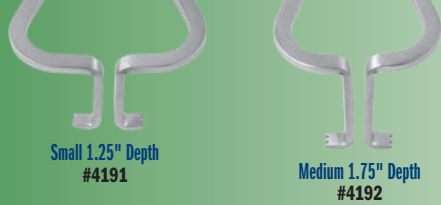
## Deep Meyerding Retractor with Ergonomic Handle

*A self-retaining soft tissue retractor for use in hip, knee, and shoulder surgery*

PRODUCT NO:	
<b>6244</b>	Overall Length: 8.5" (21,6 cm) Blade Depth: 3.5" (8,9 cm) Blade Width: 1" (2,54 cm)

MADE EXCLUSIVELY FOR INNOMED IN GERMANY





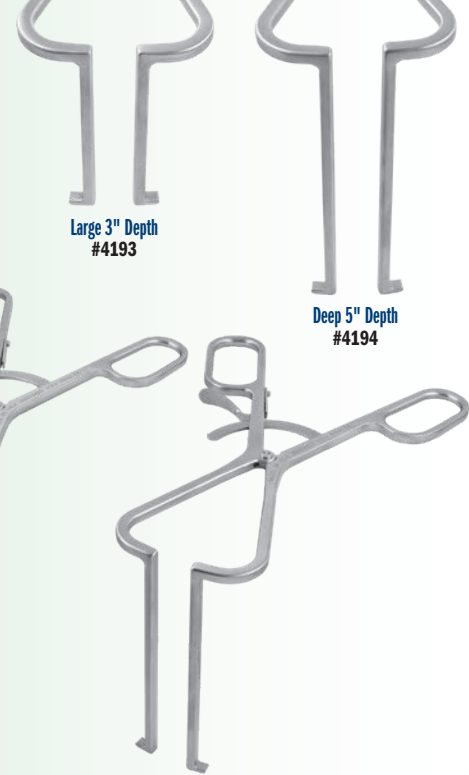
Small 1.25" Depth  
#4191

Medium 1.75" Depth  
#4192

## Flat Gelpi Retractors

Designed to help retract a broader area of soft tissue or muscle

PRODUCT NO'S:	
<b>4191</b> [Small]	Overall Length: 6.5" (16,5 cm) Prong Depth: 1.25" (3,2 cm)
<b>4192</b> [Medium]	Overall Length: 7.25" (18,4 cm) Prong Depth: 1.75" (4,4 cm)
<b>4193</b> [Large]	Overall Length: 9" (22,9 cm) Prong Depth: 3" (7,6 cm)
<b>4194</b> [Deep]	Overall Length: 10" (24,4 cm) Prong Depth: 5" (12,7 cm)



Large 3" Depth  
#4193

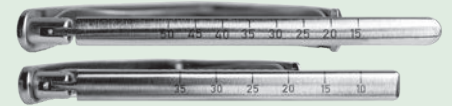
Deep 5" Depth  
#4194

The two largest sizes feature an ergonomic handle for increased comfort and control.

## Ortho Self-Retaining Retractors

Helps separate the femur and tibia during knee replacement procedures, where the calibrated design can help to balance ligaments

- Features a no-teeth design, available with flat or serrated outside blades
- Can also be used for spine surgery where the calibrated ratchet can be used to help accurately measure the size of an opening – useful in procedures to help assess bone graft needs
- Also useful in foot & ankle surgery



Calibrated ratchet (in mm) is helpful in ligament balancing

### Standard Handle

#### PRODUCT NO'S:

Flat Outside Pads	Serrated Outside Pads
<b>1842</b> [Small Flat] Overall Length: 6.5" (16,5 cm) Blade Width: 7 mm Blade Thickness: 1,7 mm	<b>1842-01</b> [Small Serrated] Overall Length: 6.5" (16,5 cm) Blade Width: 7 mm Blade Thickness: 1,7 mm
<b>1843</b> [Medium Flat] Overall Length: 9.25" (23,5 cm) Blade Width: 10 mm Blade Thickness: 1,7 mm	<b>1843-01</b> [Medium Serrated] Overall Length: 9.25" (23,5 cm) Blade Width: 10 mm Blade Thickness: 1,7 mm



MADE EXCLUSIVELY FOR INNOVIMED IN GERMANY



Medium Flat  
#1843

Small Flat  
#1842

Medium Serrated  
#1843-01

Small Serrated  
#1842-01

Small Serrated with Small Grip  
#1842-01-SG

### Small Grip Handle

#### PRODUCT NO'S:

Serrated Outside Pads
<b>1842-01-SG</b> [Small Serrated, Small Grip] Overall Length: 6.5" (16,5 cm) Blade Width: 7 mm Blade Thickness: 1,68 mm



Designed with the grip closer together for easier gripping and to help reduce hand fatigue

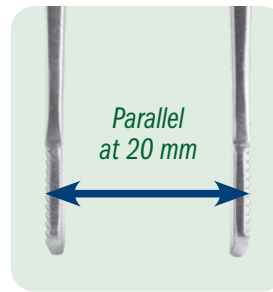
# Lombardi Gap Balancing Femoral Tibial Spreader

Designed by Adolph V. Lombardi Jr., MD

Locking mechanism modification designed by Munish C. Gupta, MD

*Designed to help separate the femur and tibia during total knee procedures, with the pads being parallel when measured at 20 mm of separation*

All models and sizes feature a calibrated handle to help accurately gauge the gap, and makes it possible for two spreaders to be used to assist in balancing ligaments.



## Standard Handle

### PRODUCT NO'S:

**1878** [Large – Grooved Pads]  
Overall Length: 9.25" (23,5 cm)  
Pads: 22 mm x 13 mm  
Opens to: 50 mm

**1877** [Small – Grooved Pads]  
Overall Length: 7" (17,8 cm)  
Pads: 22 mm x 13 mm  
Opens to: 35 mm

**1878-D** [Large – Diamond Cut Pads]  
Overall Length: 9.25" (23,5 cm)  
Pads: 22 mm x 13 mm  
Opens to: 50 mm

**1877-D** [Small – Diamond Cut Pads]  
Overall Length: 7" (17,8 cm)  
Pads: 22 mm x 13 mm  
Opens to: 35 mm



MADE EXCLUSIVELY FOR INNOVIMED IN GERMANY



Grooved Pads    Diamond Cut Pads



**Ratcheting Mechanism**  
Large – Horizontal Grooved Pads #1878  
Large – Diamond Cut Pads #1878-D



**Ratcheting Mechanism**  
Small – Horizontal Grooved Pads #1877  
Small – Diamond Cut Pads #1877-D



**Locking Mechanism**  
Large – Horizontal Grooved Pads #1878-LR



**Locking Mechanism**  
Small – Horizontal Grooved Pads #1877-LR



**Locking Mechanism**  
Small – Smooth Pads #1877-SP  
Design modified by Mojib Manzary, MD, FRCSC

*Locking ratchet mechanism helps prevent accidental release, and provides for controlled adjustment and easy release.*

## Locking Mechanism

### PRODUCT NO'S:

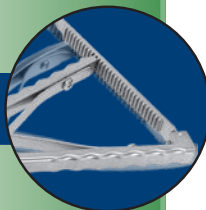
**1878-LR** [Large – Grooved Pads with Locking Mechanism]  
Overall Length: 9.625" (24,4 cm)  
Pads: 22 mm x 13 mm  
Opens to: 45 mm

**1877-LR** [Small – Grooved Pads with Locking Mechanism]  
Overall Length: 7" (17,8 cm)  
Pads: 22 mm x 13 mm  
Opens to: 35 mm

**1877-SP** [Small – Smooth Pads with Locking Mechanism]  
Overall Length: 7" (17,8 cm)  
Pads: 22 mm x 13 mm  
Opens to: 35 mm



## Small Grip Handle



### PRODUCT NO:

**1877-SG** [Small with Small Grip and Grooved Pads]  
Overall Length: 7" (17,8 cm)  
Pads: 22 mm x 13 mm  
Opens to: 35 mm



*Designed with the grip closer together for easier gripping and to help reduce hand fatigue*



**Ratcheting Mechanism**  
Small with Small Grip & Horizontal Grooved Pads #1877-SG

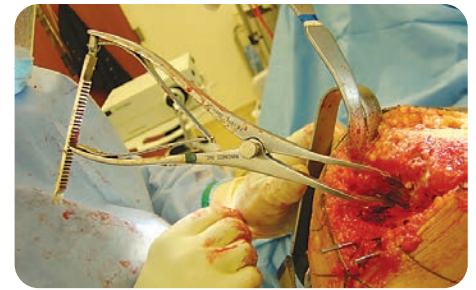
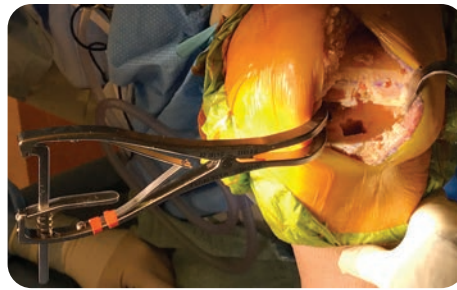
# Lombardi Femoral Tibial Spreader

Designed by Adolph V. Lombardi Jr., MD

Locking mechanism modification designed by Munish C. Gupta, MD

*Thin pads help to separate the femur and tibia during total knee procedures*

All models and sizes feature a calibrated handle to help accurately gauge the gap, and makes it possible for two spreaders to be used to assist in balancing ligaments.



## Standard Handle

### PRODUCT NO'S:

**1875** [Large – Grooved Pads]

Overall Length: 9.25" (23,5 cm)

Pads: 22 mm x 13 mm

Opens to: 50 mm

**1875-D** [Large – Diamond Cut Pads]

Overall Length: 9.25" (23,5 cm)

Pads: 22 mm x 13 mm

Opens to: 50 mm

**1876** [Small – Grooved Pads]

Overall Length: 7" (17,8 cm)

Pads: 22 mm x 13 mm

Opens to: 35 mm

**1876-D** [Small – Diamond Cut Pads]

Overall Length: 7" (17,8 cm)

Pads: 22 mm x 13 mm

Opens to: 35 mm



MADE EXCLUSIVELY FOR INNOVATED IN GERMANY



Grooved Pads Diamond Cut Pads

## Locking Mechanism

### PRODUCT NO'S:

**1875-LR** [Large – Grooved Pads with Locking Mechanism]

Overall Length: 9.625" (24,4 cm)

Pads: 22 mm x 13 mm

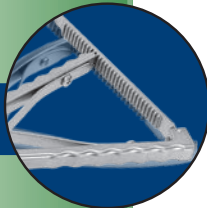
Opens to: 45 mm

**1876-LR** [Small – Grooved Pads with Locking Mechanism]

Overall Length: 7" (17,8 cm)

Pads: 22 mm x 13 mm

Opens to: 35 mm



## Small Grip Handle

### PRODUCT NO:

**1876-SG** [Small with Small Grip and Grooved Pads]

Overall Length: 7" (17,8 cm)

Pads: 22 mm x 13 mm

Opens to: 35 mm



### PRODUCT NO:

**1820**

Overall Length: 13" (33 cm)

Coated Surface: 4" (10,2 cm)

Blade Width: 13 mm



**Ratcheting Mechanism**  
Large – Horizontal Grooved Pads #1875  
Large – Diamond Cut Pads #1875-D



**Ratcheting Mechanism**  
Small – Horizontal Grooved Pads #1876  
Small – Diamond Cut Pads #1876-D



**Locking Mechanism**  
Large – Horizontal Grooved Pads #1875-LR



**Locking Mechanism**  
Small – Horizontal Grooved Pads #1876-LR

Locking ratchet mechanism helps prevent accidental release, and provides for controlled adjustment and easy release.

Designed with the grip closer together for easier gripping and to help reduce hand fatigue



**Ratcheting Mechanism**  
Small with Small Grip & Horizontal Grooved Pads #1876-SG

## Femoral Tibial Coated Spreader Bar

*Designed to separate the femur and tibia when implant components are in place*

The end is coated to help protect from scratching component surfaces.

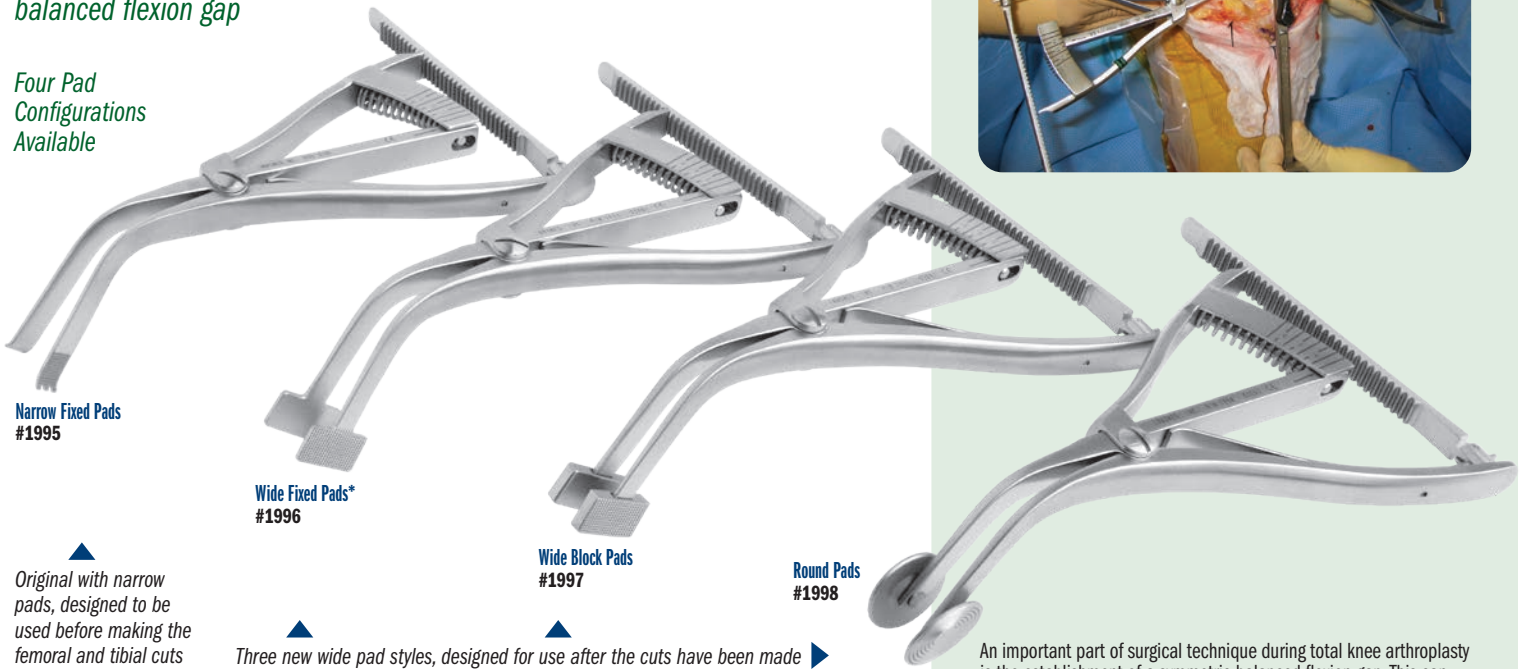
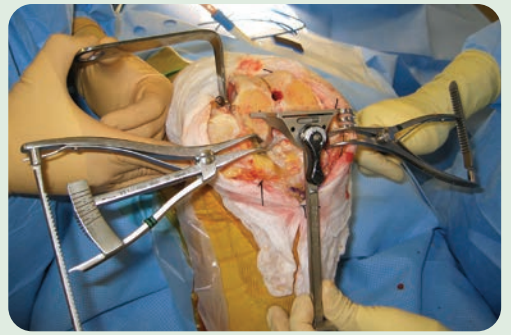


# Scott Femoral Tibial Tensor/Spreaders

Designed by Richard Scott, MD

Used before determining femoral component rotation to help properly tense the medial and lateral ligaments and help assure a stable, balanced flexion gap

Four Pad Configurations Available



**Narrow Fixed Pads**  
#1995

**Wide Fixed Pads\***  
#1996

**Wide Block Pads**  
#1997

**Round Pads**  
#1998

Original with narrow pads, designed to be used before making the femoral and tibial cuts

Three new wide pad styles, designed for use after the cuts have been made

An important part of surgical technique during total knee arthroplasty is the establishment of a symmetric balanced flexion gap. This can be achieved by tensing the medial and lateral ligaments with laminar spreaders and rotating the femoral component until a rectangular space is formed. The calibrated Tensor/Spreader allows the surgeon to choose a reproducible amount of tension across the medial or lateral flexion space.

In the varus knee, any medial release necessary to balance the knee in extension is performed first. In the valgus knee, the flexion gap can be balanced before the extension gap if the lateral retinaculum (not the lateral collateral ligament) is all that needs releasing to correct the deformity.

The spreader can be used before or after tibial preparation and also during revision surgery after a well-aligned tibial platform has been established.

The knee is flexed 90 degrees. Any medial retractor is removed. The medial gap is tensed with a plain or calibrated laminar spreader that is opened until the medial collateral ligament is fully tensed. The calibrated tensor is applied laterally and opened to the desired tension on the indicator. The femoral component is rotated until a rectangular gap is formed based off the tibial cut or an external tibial alignment device (if the tibial resection has not yet been performed).

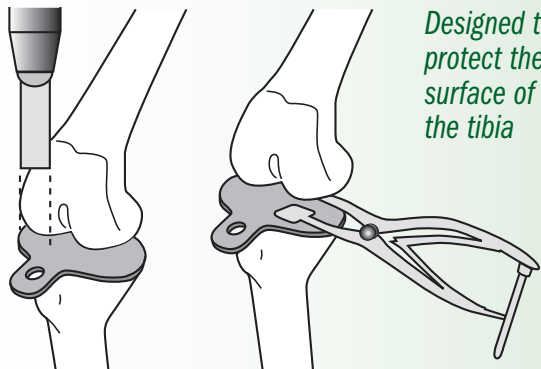
PRODUCT NO'S:	
<b>1995</b> [Narrow Fixed Pads] Overall Length: 7" (17,8 cm) Blade Width: 7 mm Opens to: 40 mm	
<b>1996*</b> [Wide Fixed Pads] Overall Length: 7" (17,8 cm) Pads: 22 mm x 13 mm Opens to: 40 mm	
<b>1997</b> [Wide Block Pads] Overall Length: 7" (17,8 cm) Pads: 23 mm x 12 mm Opens to: 40 mm	
<b>1998</b> [Round Pads] Overall Length: 7" (17,8 cm) Pads: 25 mm x 25 mm Opens to: 40 mm	



Surgical Technique available on our website.

US Patent #8,162,951 B2

\*Pad Modification designed by Raymond H. Kim, MD



Designed to protect the surface of the tibia

# Sorrells Tibia Protector Plates

Designed by R. Barry Sorrells, MD



**Small**  
65 x 40 mm  
#1135

**PRODUCT NO'S:**  
**1130** [Large] 75 mm x 45 mm  
**1135** [Small] 65 mm x 40 mm

**Large**  
75 x 45 mm  
#1130



### Locking Mechanism Version

Helps prevent accidental release, and provides for controlled adjustment and easy release.

### Speed Lock Version

Helps allow precise control and prevent unintended release.

### Coated Pad Version

Helps protect component surfaces when implants are in place, and are slightly contoured to add stability against the curved articulating implant surfaces.

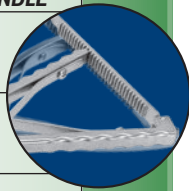
### Small Grip Handle

Designed with the grip closer together for easier gripping and to help reduce hand fatigue.

PRODUCT NO'S:	
<b>SMALL WITH STANDARD GRIP</b>	
<b>1850</b> [Grooved Pads]	Overall Length: 7" (17,8 cm) Pads: 23 x 12 mm Opens to: 39 mm
<b>1850-D</b> [Diamond Cut Pads]	Overall Length: 7" (17,8 cm) Pads: 23 x 12 mm Opens to: 39 mm
<b>1850-01</b> [Coated Pads]	Overall Length: 7" (17,8 cm) Pads: 18 x 15 mm Opens to: 39 mm
<b>1865</b> [Round Pads]	Overall Length: 7" (17,8 cm) Pads: 25 x 25 mm Opens to: 39 mm



PRODUCT NO'S:	
<b>SMALL WITH SMALL GRIP HANDLE</b>	
<b>1850-SG</b> [Grooved Pads]	Overall Length: 7" (17,8 cm) Pads: 23 x 12 mm Opens to: 39 mm
<b>1850-01-SG</b> [Coated Pads]	Overall Length: 7" (17,8 cm) Pads: 18 x 15 mm Opens to: 39 mm
<b>1865-SG</b> [Round Pads]	Overall Length: 7" (17,8 cm) Pads: 25 x 25 mm Opens to: 39 mm



PRODUCT NO'S:	
<b>SMALL WITH LOCKING MECHANISM</b>	
<b>1850-LR</b> [Grooved Pads]	Overall Length: 7" (17,8 cm) Pads: 23 x 12 mm Opens to: 39 mm
<b>1865-LR</b> [Round Pads]	Overall Length: 7" (17,8 cm) Pads: 25 x 25 mm Opens to: 39 mm



PRODUCT NO'S:	
<b>MEDIUM</b>	
<b>1855</b> [Grooved Pads]	Overall Length: 10" (25,4 cm) Pads: 23 x 14 mm Opens to 50 mm
<b>1855-D</b> [Diamond Cut Pads]	Overall Length: 10" (25,4 cm) Pads: 23 x 14 mm Opens to 50 mm
<b>1855-SL</b> [Speed Lock* & Grooved Pads]	Overall Length: 10" (25,4 cm) Pads: 23 x 14 mm Opens to 50 mm
<b>1866</b> [Round Pads]	Overall Length: 10" (25,4 cm) Pads: 25 x 25 mm Opens to 50 mm



\*Speed lock modification designed by Nasim A. Rana, MD

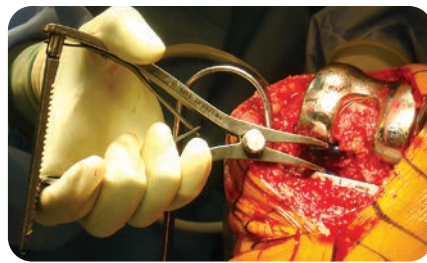
PRODUCT NO:	
<b>LARGE</b>	
<b>1860</b> [Grooved Pads]	Overall Length: 12" (30,5 cm) Pads: 25 x 16 mm Opens to 65 mm



## Calibrated Femoral Tibial Spreaders

Helps separate the femur and tibia during total knee replacement surgery

Designed to remain in position, with the femur and tibia separated, without the need of an assistant, and to minimize crushing the bone, even if osteoporotic. A wide unobstructed view of the posterior compartment is possible. Osteophytes on the posterior condyles of the femur and tibia can be seen and removed. The calibrated handle of the spreader makes it possible for two spreaders to be used to assist the surgeon in balancing ligaments.



**Standard Grip**

Small with Grooved Pads #1850  
Small with Diamond Cut Pads #1850-D

Small with Coated Pads #1850-01

Small with Round Pads #1865

Small - 7"



**Small Grip Handle**

Small Grip and Grooved Pads #1850-SG

Small Grip and Coated Pads #1850-01-SG

Small Grip and Round Pads #1865-SG

Small - 7"

Designed with the grip closer together for easier gripping and to help reduce hand fatigue



**Locking Mechanism**

Small with Grooved Pads and Locking Mechanism #1850-LR

Small with Round Pads and Locking Mechanism #1865-LR

Small - 7"



**Standard Grip**

Medium with Grooved Pads #1855  
Medium with Diamond Cut Pads #1855-D

Medium with Speed Lock & Grooved Pads (No Calibrations) #1855-SL

Medium with Round Pads #1866

Medium - 10"



Grooved Pads

Diamond Cut Pads

Coated Pads

Round Pads

Large with Grooved Pads #1860

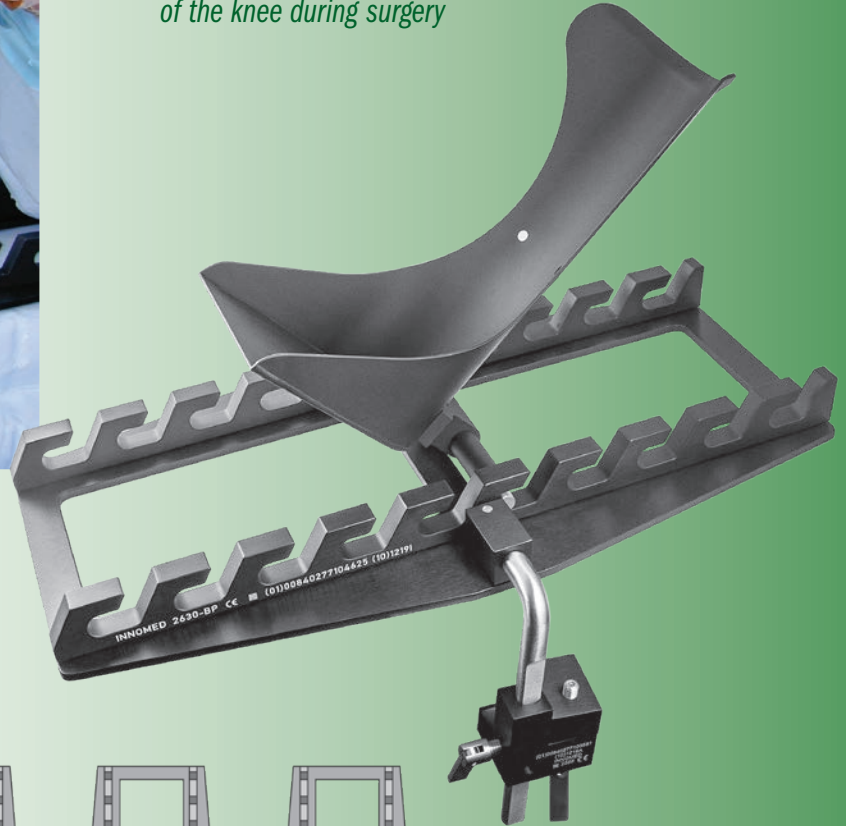
Large - 12"



# Robb Leg Positioner

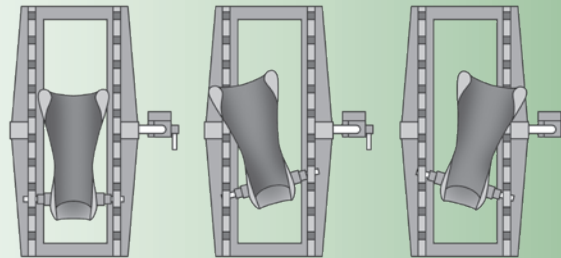
Designed by William Robb, MD

*Provides stable positioning of the knee during surgery*



- ▶ Slotted base allows the leg to be easily flexed or extended during knee surgery
- ▶ Slots are also designed to allow the foot piece to be rotated
- ▶ The complete unit is steam and gas sterilizable
- ▶ Supplied with a sterilizable table clamp which can be clamped over the sterile drape to the O.R. table side bar
- ▶ Three (3) Sterile Pads/Wraps are included with each new purchase (See below for Pad/Wrap information)

PRODUCT NO'S:	
<i>Base Dimensions: 21" x 11" (53,4cm x 27,9cm)</i>	
<b>2630-11</b>	[Robb Leg Positioner]
Optional & Replacement Parts:	
<b>2630-FP</b>	[Aluminum Footpiece Only]
<b>2629-00</b>	[Case of 10 Sterile Pads/Wraps]
<b>2595</b>	[Table Clamp]



## Leg Positioner Sterile Protective Pad & Wrap

*Disposable, latex-free sterile foam pad and cohesive wrap helps protect patient from pressure sores, abrasions and possible neurological impairment while securing foot into the boot*



Compatible with the Innomed's Stulberg, Robb and Lombardi Leg Positioners



PRODUCT NO:	
<b>2629-00</b>	[Case of 10 Sets]
<b>2629-L</b>	[1 Set]



Each set includes 1 Pad and 1 Wrap.





# Stulberg Leg Positioner

Designed by S. David Stulberg, MD

*Provides stable positioning of the knee during surgery*

- ▶ Allows the leg to be manipulated into the desired position and securely locked in place
- ▶ Includes the necessary adjustments to tilt, rotate, and flex or extend the knee
- ▶ Extension/flexion adjustments can be made with the quick release of the ratchet
- ▶ In use, the base plate is clamped onto the operating table with the vertical side bar, the base plate is draped, and the sterile support plate lowered into the base plate
- ▶ The patient's foot is wrapped into the foot support with a sterile bandage (additional padding may be used for thin tibias)
- ▶ The complete unit is steam and gas sterilizable
- ▶ Three (3) Sterile Pads/Wraps are included with each new purchase (See page 24 for Pad/Wrap information)

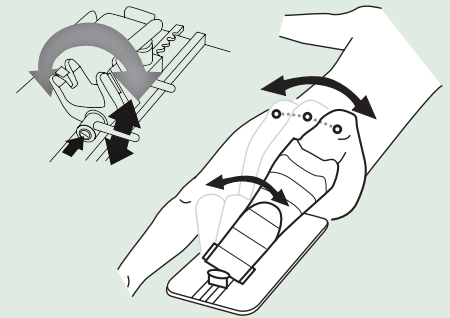


PRODUCT NO'S:	
Base Dimensions: 20" x 10.5" (50,8 cm x 26,7 cm)	
<b>2620-10</b> [Stulberg Leg Positioner]	
Optional & Replacement Parts:	
<b>2620-FP</b> [Aluminum Footpiece Only]	
<b>2629-00</b> [Case of 10 Sterile Pads/Wraps]	

Usage guide available on our website.

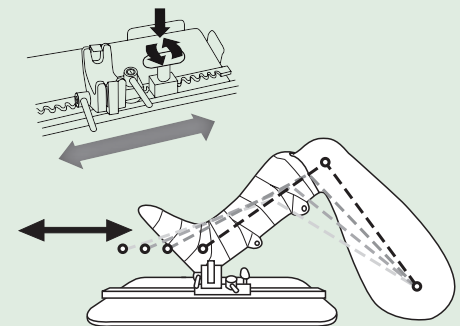


## Tilt Bar



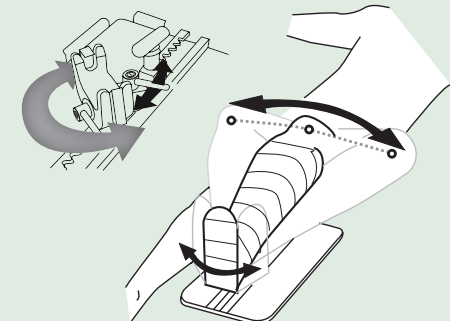
Loosening the Tilt Bar allows the knee to be tilted in either direction. Tightening the bar locks the Yoke System in the desired position.

## Ratchet



The Ratchet allows the Yoke Assembly to be moved in a precise gradual manner, the length of the Track. For faster adjustments, downward pressure on the Ratchet Handle releases the Yoke Assembly which then can be easily slid the length of the Track.

## Rotation Bar



Loosening the Rotation Bar allows the knee to be rotated in either direction. Tightening the bar locks the Yoke System in the desired direction.

# Chandran Thigh Lift Positioner

Designed by Rama Chandran, MD

Designed to help lift and position the thigh from above during knee surgery



**New!**

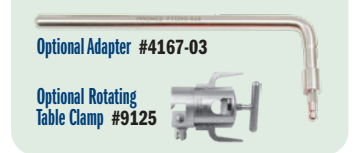


The optional thigh lift adapter is designed for use with a hydraulic lift device instead of the manual lift rod with table clamp.



PRODUCT NO'S:
<b>4167-00</b> [Positioner Set]
<b>Set Includes:</b>
<b>4167-01</b> [Cradle] Dimensions: 7.5" x 7.75" (19,1 x 19,7 cm)
<b>4167-02</b> [Rod] Width: 13.6" (34,5 cm) Height: 20.6" (52,3 cm)
<b>4150-PS</b> [Post Screw] Two included in set, one with this product number
<b>2760-P</b> [Silicone Pad] Dimensions: 9" x 8" x 1/2" thick (22,9 x 20,3 x 1,3 cm)
[Orange Strap] Dimensions: 2" x 31.5" (5,1 x 80 cm) Two included in set, see below for replacement 10-pack

PRODUCT NO'S:
<b>Optional Parts:</b>
<b>4167-03</b> [Adapter] Width: 12.4" (31,5 cm) Height: 4.875" (12,4 cm)
<b>9125</b> [Rotating Table Clamp]



PRODUCT NO'S:
<b>Replacement Parts:</b>
<b>8130-P</b> [Orange Straps - 10-Pack] Dimensions (Each): 2" x 31.5" (5,1 x 80 cm)
<b>2760-P</b> [Silicone Pad] Dimensions: 9" x 8" x 1/2" thick (22,9 x 20,3 x 1,3 cm)



# Adjustable Knee & Tibial Positioner

Designed by Ashutosh Chaudhari, MD

Adjustable design allows for use in procedures around the knee such as tibial nailing, tibial condyle plating, patella fracture fixation, supracondylar fracture plating, supracondylar fracture nailing, and total knee replacement

PRODUCT NO'S:
<b>2770-00</b> [Set] Includes Positioner, Pad, and Two Short Straps
<b>Individual / Replacement Parts</b>
<b>2770-01</b> [Positioner] Overall Length (Folded): 28" (71,1 cm) Overall Length (Flat): 54.75" (139 cm) Maximum Triangle Height: 14" (35,6 cm) Width: 5.5" (14 cm) Thickness (Folded): 1.8" (4,6 cm) Thickness (Flat): .75" (1,9 cm)
<b>2770-P</b> [Silicone Pad] Dimensions: 12" x 5.5" (30,5 cm X 14 cm)
<b>2590-S</b> [Short Straps] Pkg of 10



Radiolucent. Steam sterilizable.



## Lombardi Leg Positioner

Designed by Adolph V. Lombardi Jr., MD

*Designed to hold the leg during total knee surgery, the unrestricted design helps allow for manipulation of the leg*

- ▶ The footpiece consists of an open topped boot, separated with four spacers and attached to a boot support plate.
- ▶ The support plate is bent beyond the rear of the boot to help provide support in different positions of flexion/extension.
- ▶ The spacers allow for room to clean between the boot and support plate.

Two (2) Sterile Pads/Wraps are included with each purchase.

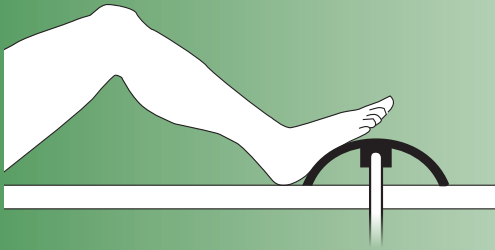
PRODUCT NO'S:	
<b>2622</b>	[Lombardi Leg Positioner]
Base Length: 13" (33 cm)	
Base Width: 7" tapers to 4" (17,8 x 10,2 cm)	
Overall Height: 12.75" (32,4 cm)	
Replacement Parts:	
<b>2629-00</b>	[Sterile Pad & Wrap – Case of 10 Sets]



## Kirschenbaum Foot Positioner

Designed by Ira Kirschenbaum, MD

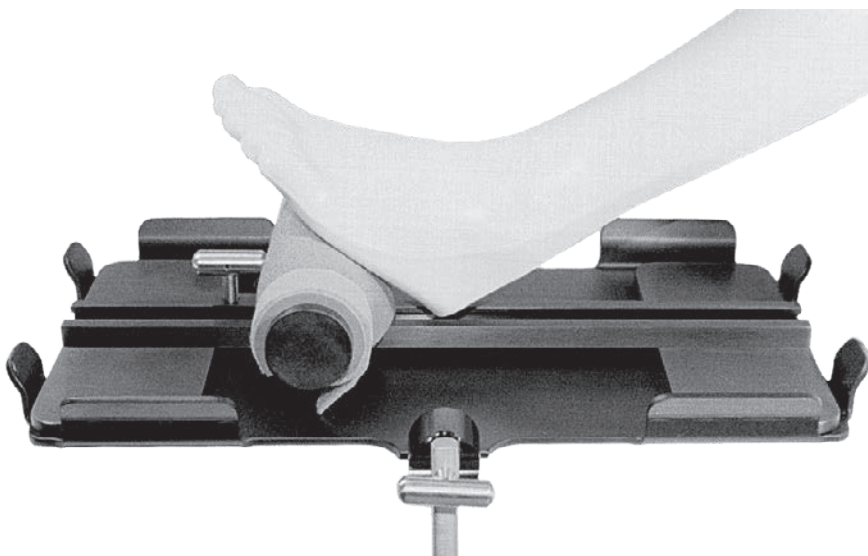
*Helps eliminate the use of sand bags under the drape during total knee surgery*



The foot rest is dome shaped for optimal foot contact and positioning the leg in flexion, and can be rotated. The unit can be used under the drape by attaching it to a standard table attachment or it can be sterilized for use on top of the drape. It can be attached to the table with the optional sterilizable table clamp. Supplied with a removable, sterilizable silicone foot pad.



PRODUCT NO'S:	
<b>2590</b>	[Foot Positioner – Long] 15.5" x 6" (39,4 cm x 15,2 cm)
<b>2591</b>	[Foot Positioner – Short] 9.5" x 6" (24,1 cm x 15,2 cm)
Optional & Replacement Parts:	
<b>2590-P</b>	[Large Replacement Pad] 16" x 9" (40,7 cm x 22,9 cm)
<b>2591-P</b>	[Small Replacement Pad] 9.5" x 9.25" (24,1 cm x 23,5 cm)
<b>2595</b>	[Optional Table Clamp]



## Stulberg Sliding Bolster

Designed by S. David Stulberg, MD

*Helps eliminate the need for a sand bag during total knee surgery*

The base plate is attached to the table and the sterile sliding bolster is placed on top of the sterile drape. The bolster can be adjusted for different angles of knee flexion during surgery.

PRODUCT NO'S:	
<b>2730</b>	[Sliding Bolster]
Base Dimensions:	
20" x 10.5" (50,8 cm x 26,7 cm)	





Use in Knee Surgery

Use in Hip Surgery

## Berger Block Positioner

Designed by Richard Berger, MD

Designed for lower extremity positioning with dual height options



PRODUCT NO'S:	
<b>2750-00</b> [Set]	Dimensions with Pads: 4.75" x 6.75" x 8" (12,1 x 17,1 x 20,3 cm)
<b>Set Includes / Available Individually:</b>	
<b>2750-01</b> [Positioner Only]	Dimensions: 4.125" x 6.125" x 8" (10,5 x 15,6 x 20,3 cm)
<b>2750-P</b> [Positioner Pad Only]	
[Brown Strap Only] (2) Included in Set	
<b>Optional Items:</b>	
<b>2750-S</b> [Brown Straps]	Pkg of 10



4" #2740-01

6" #2740-02

## Sanders Extremity Positioning Tubes

Designed to support the knee and ankle during lower extremity surgery

Designed by Richard A. Sanders, MD

The 4" (10,2 cm) tube elevates the foot and ankle for ankle fracture surgery.

The 6" (15,2 cm) tube lifts the knee off the operating table and allows for approximately 30° of knee flexion. Very useful for closure of total knee incisions, supporting fractures of the distal femur, and tibia plateau fractures.

The tubes are made of aluminum, allowing them to be autoclaved. They help eliminate the need for rolled sheet bolsters.

PRODUCT NO'S:	
<b>2740-01</b> [Small]	Diameter: 4" (10,2 cm) Width: 8" (20,3 cm)
<b>2740-02</b> [Large]	Diameter: 6" (15,2 cm) Width: 8" (20,3 cm)



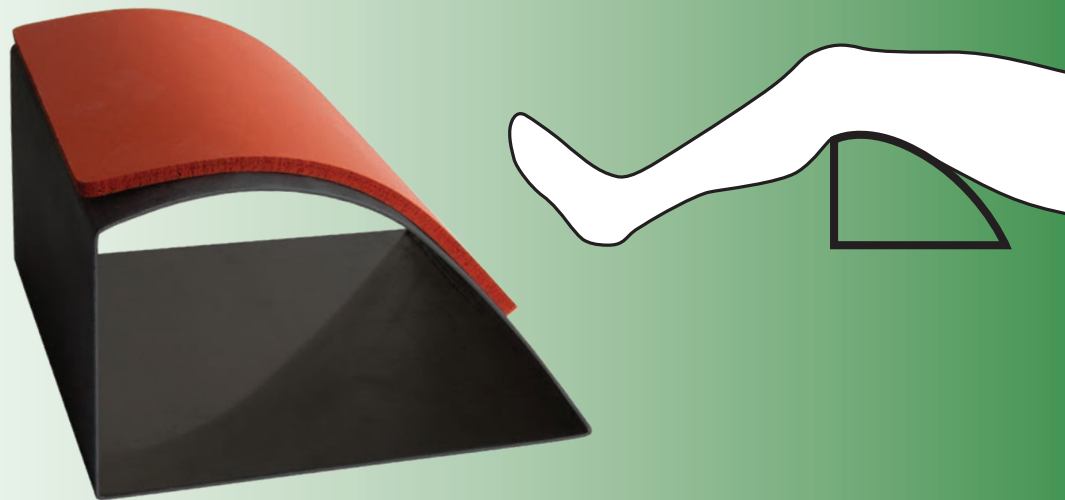
## Lower Extremity Leg Positioner

Designed by Ronald Romanelli, MD

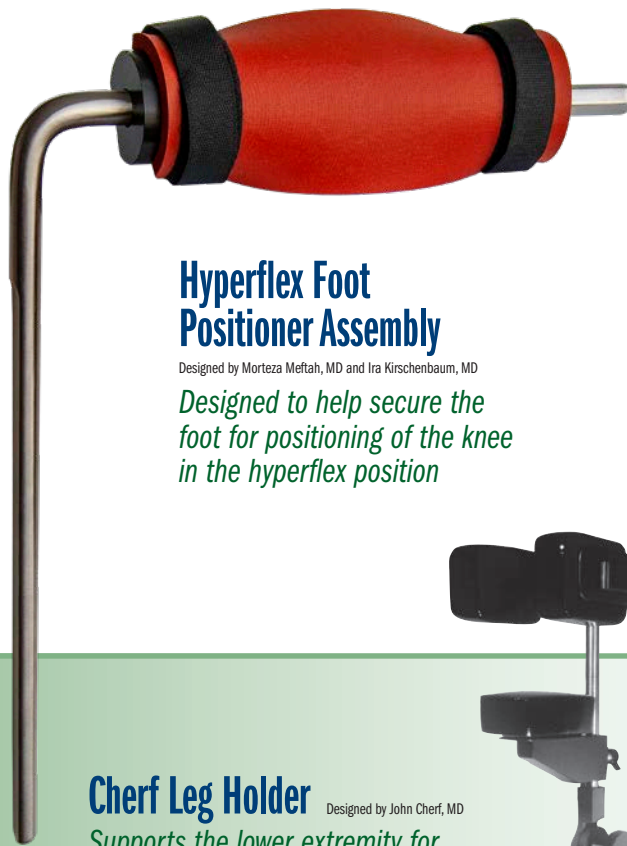
Used to support knee and leg during surgery, and can be used for casting

- ▶ Utilized for rodding of femurs or tibias
- ▶ Also useful for knee surgery and closures
- ▶ Very supportive, distributes stresses on leg, used instead of bolsters
- ▶ Supplied with one autoclavable silicone pad
- ▶ Aluminum positioner is radiolucent and gas or steam sterilizable

PRODUCT NO'S:	
<b>2745</b>	Dimensions: 5.5" x 9.5" x 9.25" (14 x 24 x 23,5 cm)
<b>Replacement Parts:</b>	
<b>2760-P</b>	[Silicone Pad]



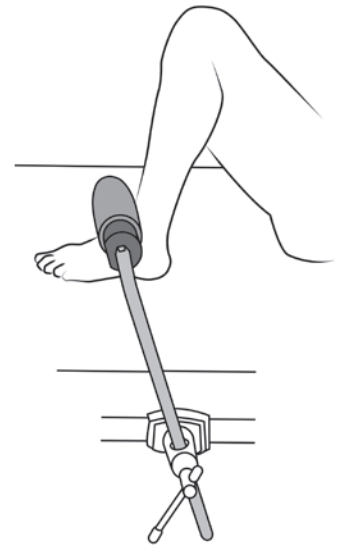
<b>PRODUCT NO'S:</b>	
<b>2589-00</b>	[Complete Assembly] Overall Length: 19" (48,3 cm)
<b>Individual/Replacement Parts:</b>	
<b>2589-01</b>	[Foot Positioner] Overall Length: 18" (45,7 cm)
<b>2590-B</b>	[Positioner Bar] Overall Length: 19" (48,3 cm)
<b>2730-P</b>	[Pad & Two Straps]
<b>4150-PS</b>	[Post Screw]
<b>Optional Parts:</b>	
<b>2590-S</b>	[Black Straps] Pkg of 10



## Hyperflex Foot Positioner Assembly

Designed by Morteza Meftah, MD and Ira Kirschenbaum, MD

*Designed to help secure the foot for positioning of the knee in the hyperflex position*



## Cherf Leg Holder

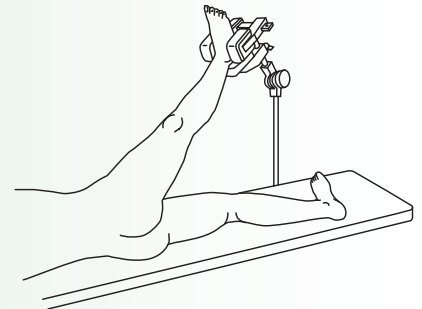
Designed by John Cherf, MD

*Supports the lower extremity for prepping before knee or hip surgery*

Useful for all lower extremity procedures and is particularly helpful for supporting the leg with the patient positioned in the lateral position. By holding the foot/ankle in an externally rotated position, the knee can be locked into extension which helps eliminate the need for manual support.

May also be used to support the limb for surgical patients in the supine position such as for knee and foot/ankle procedures.

<b>PRODUCT NO'S:</b>	
<b>2270</b>	
<b>Replacement Parts:</b>	
<b>4150-PD3</b>	[Set of 3 Small Pads]

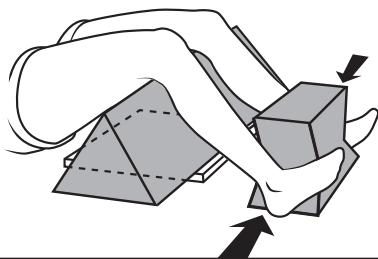


## Patient Self Stress Assembly Set

Designed by Kyle Cook, RTR and David Mauerhan, MD

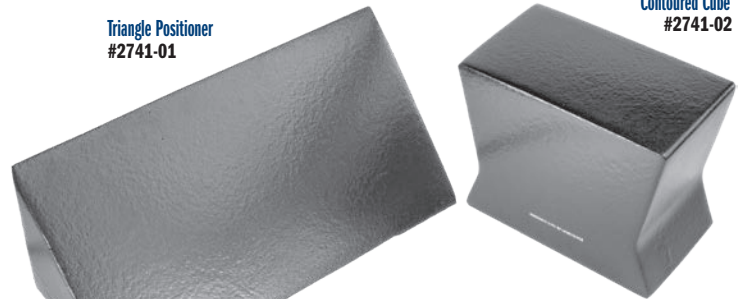


*Designed to help position a patient for X-ray evaluation to help determine candidacy for Unicdylar Knee Arthroplasty*



Triangle Positioner  
#2741-01

Contoured Cube  
#2741-02



<b>PRODUCT NO'S:</b>	
<b>2741-00</b>	[Set]
<b>Individual Instruments:</b>	
<b>2741-01</b>	[Triangle Positioner] Dimensions: 24" x 9" x 9" (61 cm x 23 cm x 23 cm)
<b>2741-02</b>	[Contoured Cube] Dimensions: 11" x 9" x 6" (28 cm x 23 cm x 15,2 cm)



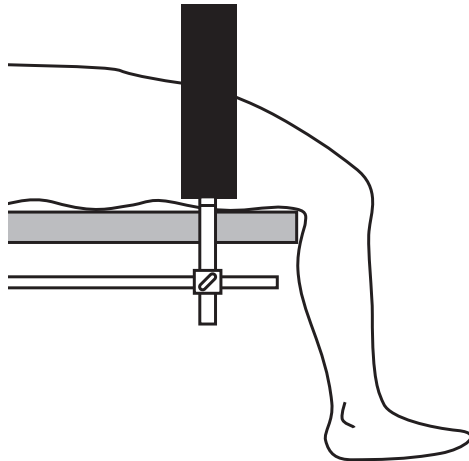
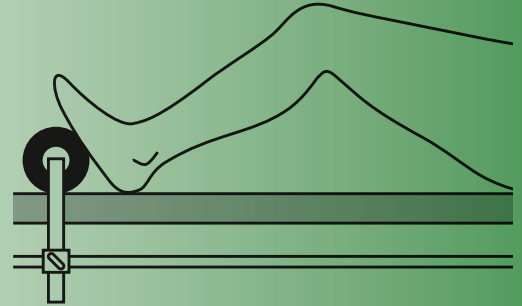
## Modified 90° Leg Stabilizer

Designed by Gregory Fanelli, MD

*Useful in total knee surgery to hold the leg in position*

Helps to open up the knee joint when pressure is applied to the lower leg. Pad and sterilizable table clamp included.

<b>PRODUCT NO:</b>
<b>2725</b>
Post Height: 11.375" (28,9 cm)
Pad Length: 9" (22,9 cm)
Pad Diameter: 3" (7,6 cm)
<b>Replacement Parts:</b>
<b>9120</b> [Table Clamp]
<b>8840-P</b> [Pad]



## Leg Stabilizer

Designed by Gregory Fanelli, MD

*Useful in arthroscopic knee surgery to hold the leg in position*

Helps to open up the knee joint when pressure is applied to the lower leg. Sterilizable table clamp included.

<b>PRODUCT NO:</b>
<b>8840</b>
Overall Length: 18.5" (47 cm)
Handle Length: 9.25" (23,5 cm)
Pad Diameter: 3" (7,6 cm)
<b>Replacement Parts:</b>
<b>9120</b> [Table Clamp]
<b>8840-P</b> [Pad]

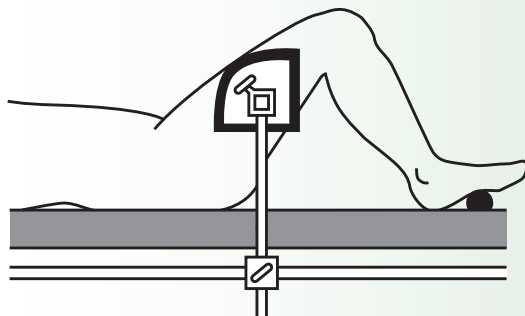


## Durham Leg Positioner

Designed by Al Durham, MD

*Placed against the thigh, helping to hold the leg upright in knee surgery*

Supplied with a sterilizable table clamp. The pad is made of semi-dense foam to help prevent pressure points and is sealed with a washable coating.



<b>PRODUCT NO:</b>
<b>4105</b>
<b>Replacement Parts:</b>
<b>9120</b> [Table Clamp]
<b>4105-P</b> [Pad]



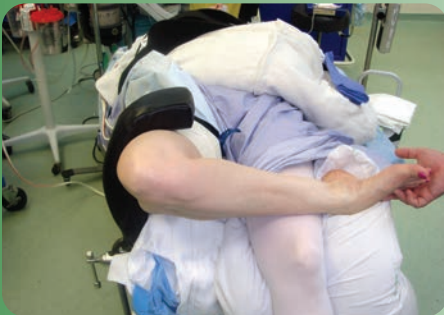
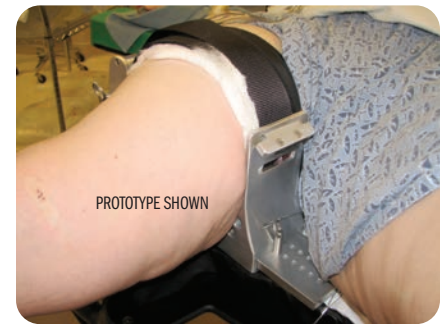
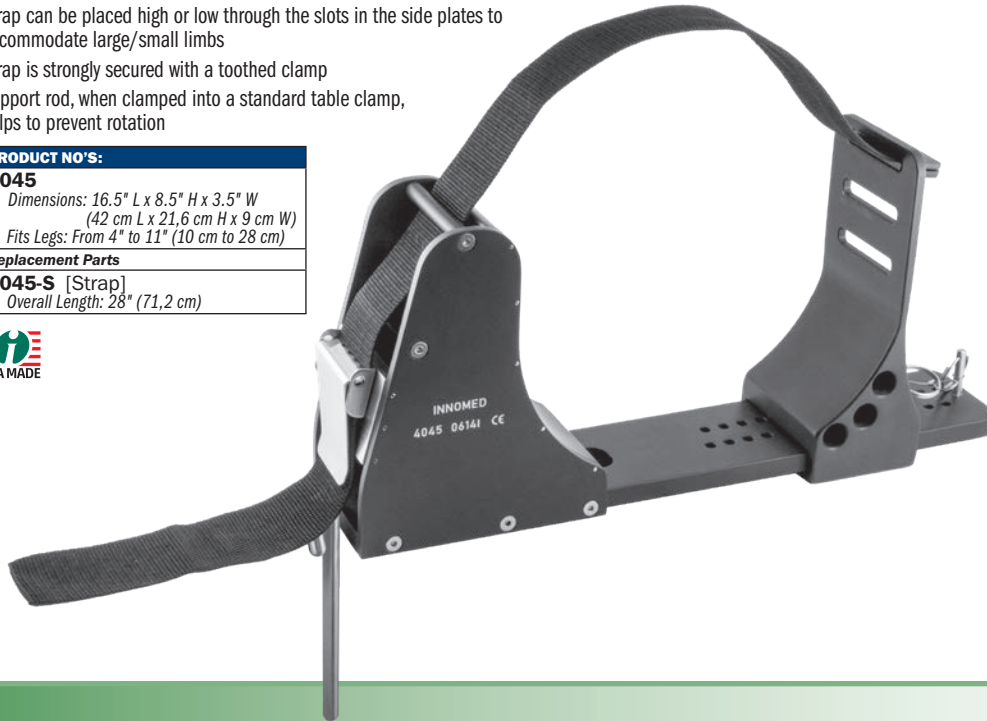
# Stanton Arthroscopic Leg Holder

Designed by John Stanton, MD

*Designed to securely hold legs of various sizes for arthroscopic surgery*

- ▶ Sliding leg holder can be adjusted for small calves or to accommodate large thighs
- ▶ Locking pin prevents sides from spreading apart
- ▶ Strap can be placed high or low through the slots in the side plates to accommodate large/small limbs
- ▶ Strap is strongly secured with a toothed clamp
- ▶ Support rod, when clamped into a standard table clamp, helps to prevent rotation

<b>PRODUCT NO'S:</b>
<b>4045</b>
Dimensions: 16.5" L x 8.5" H x 3.5" W (42 cm L x 21,6 cm H x 9 cm W)
Fits Legs: From 4" to 11" (10 cm to 28 cm)
<b>Replacement Parts</b>
<b>4045-S</b> [Strap]
Overall Length: 28" (71,2 cm)



# George Arthroscopic Knee Positioner

Designed by Michael S. George, MD

*Provides lateral as well as superior support which allows valgus stress to open the medial compartment*

Shape does not squeeze the thigh, making the need for a thigh tourniquet optional. If desired, the unit can easily be rotated out of the way without disrupting the sterile field. Using with a standard operating table clamp, the unit can easily be raised or lowered to accommodate all thigh sizes.

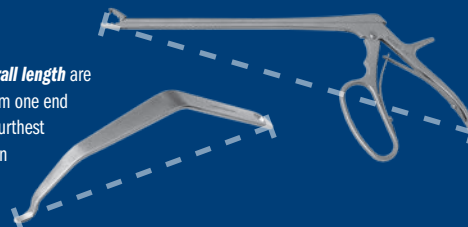
<b>PRODUCT NO'S:</b>
<b>2735</b>
Overall Height: 22" (55,9 cm)
Post Height: 12" (30,5 cm)
Pad Width: 3" (7,6 cm)
<b>Replacement Parts</b>
<b>2735-P</b> [Pad]



## Measurements in this Catalog

All effort has been made to ensure the accuracy of the measurements listed in this catalog, however, some small differences may exist between actual and listed measurements.

Measurements of **overall length** are the linear distance from one end of the product to the furthest opposite end, as shown in these examples:



Measurements of **blade width** are the linear distance from one side of the product to the opposite side, typically at the widest point, as shown in this example:



# FREE TRIAL

## on most instruments

Instruments are available for a no-charge two-week evaluation – includes FREE UPS Ground Shipping\*

\*When shipped to a hospital or medical center; additional charge applies for expedited shipping.  
Free trial offer excludes implant extraction instruments, which are available as rentals. There is a pad replacement charge with the hip positioners.

### Fromm Femur & Tibia Triangles

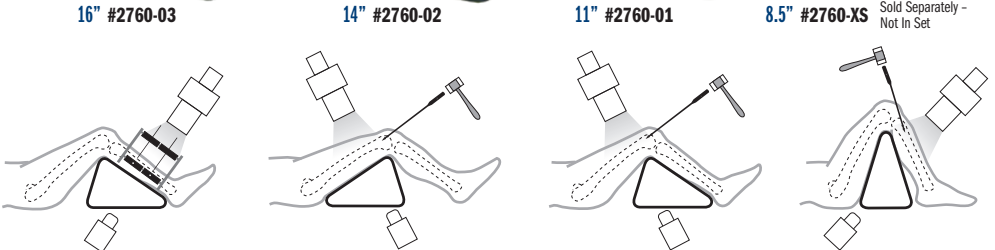
Designed by S.E. Fromm, MD \*  
Extra Small Triangle designed by S.E. Fromm, MD & Kenneth Merriman, MD

*Used for femur and tibia positioning during nailing, repairs and fractures*

Designed to position and hold the femur and tibia during intramedullary nailing of the tibia, ligament repairs and extremity fractures. Allows knee to be flexed greater than 90° to allow reaming and nail insertion without displacing fracture. The triangles are available in four heights: 8.5", 11", 14", and 16". The three smaller triangles are designed to fit inside the larger triangle for storage. They are supplied with an autoclavable silicone cushioning pad and Velcro® straps. The triangles are also radiolucent and gas or steam sterilizable.

PRODUCT NO.'S:	
<b>2760-00</b>	[Set of 3] Angles: Top 30°, Two Bottom 75°
<b>2760-01</b>	[11"] Base: 6" (15,2 cm), Height: 11" (27,9 cm)
<b>2760-02</b>	[14"] Base: 7" (17,8 cm), Height: 14" (35,6 cm)
<b>2760-03</b>	[16"] Base: 9" (22,9 cm), Height: 16" (40,7 cm)
<b>Sold Separately – Not In Set:</b>	
<b>2760-XS</b>	[8.5"] Base 5" (12,7 cm), Height: 8.5" (21,6 cm)
<b>Replacement Parts:</b>	
<b>2760-P</b>	[Silicone Pad]
<b>2760-S</b>	[Straps] Package of 18 – 6 Blue / 12 Green
<b>8100-P</b>	[Green Straps for Femur, Long] Pkg of 10
<b>8120-P</b>	[Blue Straps for Tibia, Short] Package of 10
<b>8120-SP</b>	[Straps for 2760-XS] Package of 10

\*Velcro® is a registered trademark of the Velcro Companies.



**Tibia Reduced For:**  
• Open Reduction and Internal Fixation (ORIF)  
• Application of uni- or multi-plane external fixator  
• Knee ligament repairs and/or reconstruction

**Retrograde Femoral Nailing**  
Triangle holds femur reduced (prevents sagging)

**Retrograde Femoral Nailing**

**Tibial Nailing**



ISO 13485:2016

**INNOMED, INC**  
103 Estus Drive  
Savannah, GA 31404  
  
Tel 912.236.0000  
Fax 912.236.7766  
  
innomed.net  
info@innomed.net

**Innomed-Europe LLC**  
Alte Steinhäuserstr. 19  
CH-6330 Cham, Switzerland  
Tel 0041 (0) 41 740 67 74  
  
www.innomed-europe.com  
orders@innomed-europe.com

**Innomed-Europe GmbH**  
c/o Emons Logistik GmbH  
In Rammelswiesen 9  
D-78056 Villingen-Schwenningen, Germany  
Tel 0049 (0) 7720 46110 60  
  
www.innomed-europe.com  
orders@innomed-europe.com

© 2024 Innomed, Inc.  
All Rights Reserved

