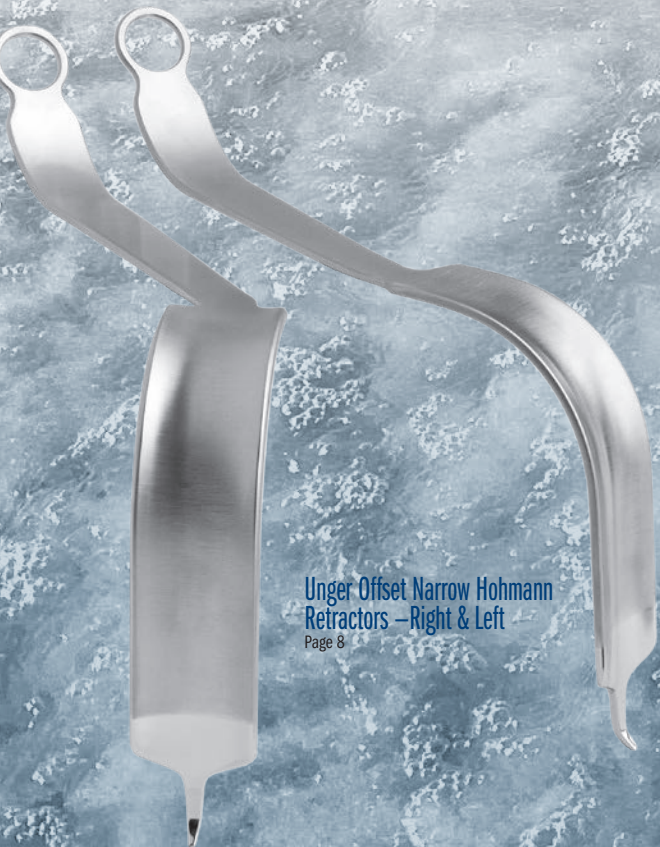


INNOMED

ORTHOPEDIC INSTRUMENTS



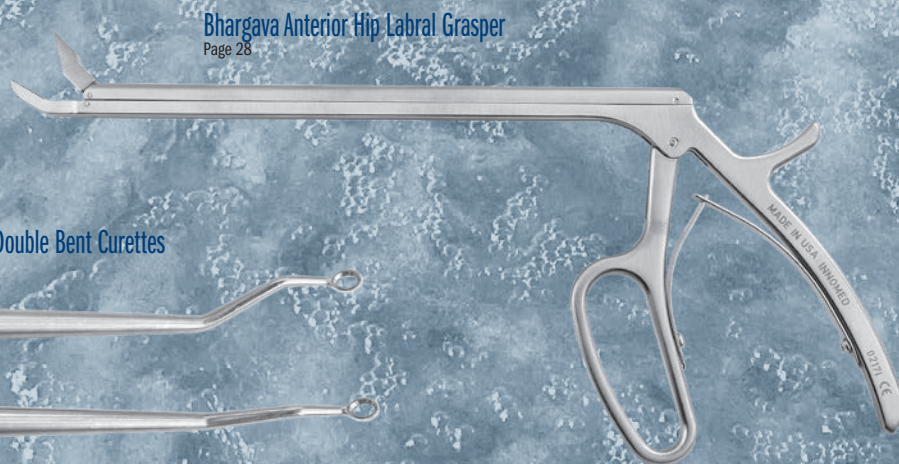
MARCH
2023



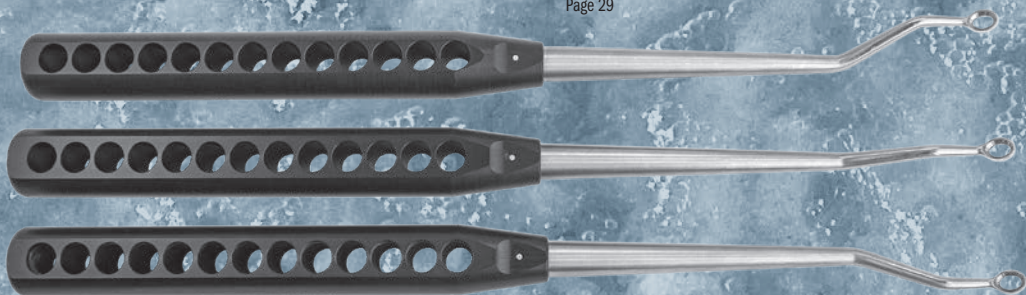
Unger Offset Narrow Hohmann
Retractors – Right & Left
Page 8



Curved Canal Rasps
Page 30



Bhargava Anterior Hip Labral Grasper
Page 28



Powers Double Bent Curettes
Page 29

Anterior Hip Instruments

1.800.548.2362 • INNOMED.NET

Direct Anterior Approach Retractor Set

A General Use Set of Innomed Retractors for Direct Anterior Approach Total Hip Arthroplasty



Single Prong Acetabular Retractor
– Standard
#6570

Mueller-type Femoral Neck
Elevator – Standard
#3415

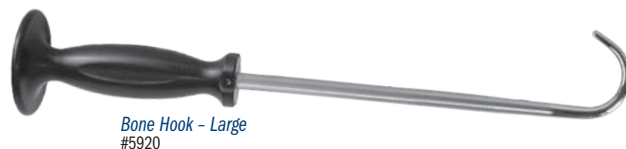
Cobra Retractor –
Standard with Sharp Tip
#6129

Deep Hohmann-style Retractors
with Large Handle – Standard
#C1009

Modified Hohmann
Retractor – Narrow
#4535

Cobra Retractor – Narrow
#6120

Bent Hohmann Retractor –
Narrow with Extra Long Handle
#7110-01



Bone Hook – Large
#5920



Rivero Extra Grip Femoral Head Remover
with Zimmer Hall Quick-connect
#3706



New!

PRODUCT NO'S:

6500-01 [DAA Retractor Set]
Set includes (2) #6120 and (1) of the other instruments shown below

Set Includes / Available Individually:

6570 [Single Prong Acetabular Retractor – Standard]
Overall Length: 12.125" (30,8 cm)
Blade Width: 22.3 mm

3415 [Mueller-type Femoral Neck Elevator – Standard]
Overall Length: 13.5" (34,3 cm)
Handle Length: 6.5" (16,5 cm)
Blade Width at Widest: 25 mm

6129 [Cobra Retractor – Standard w/Sharp Tip]
Overall Length: 12" (30,5 cm)
Handle Length: 7" (17,8 cm)
Blade at Widest: 33 mm

C1009 [Deep Hohmann-style Retractors with Large Handle – Standard]
Overall Length: 15.75" (40 cm)
Handle Length: 6.125" (15,6 cm)
Blade Depth: 4.5" (11,4 cm)
Blade Width: 1.1" (2,8 cm)
Prong Length: 1.5" (3,8 cm)

4535 [Modified Hohmann Retractor – Narrow]
Overall Length: 10" (25,4 cm)
Blade Width: 14 mm

6120 [Cobra Retractor – Narrow]
(2) included in set, (1) only with this product number
Overall Length: 11.75" (29,8 cm)
Handle Length: 6.5" (16,5 cm)
Blade Width: 19 mm

7110-01 [Bent Hohmann Retractor – Narrow with Extra Long Handle]
Overall Length: 11.5" (29,2 cm)
Handle Length: 10" (25,4 cm)
Blade Width: 19 mm
Depth from Bend: 4.25" (10,8 cm)

5920 [Bone Hook – Large]
Curve Diameter: 50 mm
Overall Length: 12.75" (32,4 cm)
Handle Length: 4.75" (12,1 cm)

3706 [Rivero Extra Grip Femoral Head Remover with Zimmer Hall Quick-connect]
Overall Length: 8.5" (21,6 cm)

Retractor Clip for Smoke Evacuation Tube

Designed by James Saucedo, MD

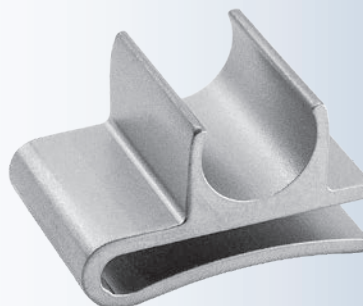
Repositionable stainless steel fastener designed to clip onto a retractor to help control the location of a smoke evacuation tube

Allows for use on a 1/8" thick material with allowance for a "spring" fit.

PRODUCT NO:

5466

Dimensions: 27 mm Long
18 mm Wide
16 mm Deep



New!



Alvi Small Charnley Style Locking Frame Set

Designed by Hasham Alvi, MD

A self-retaining frame and retractor system designed for use during anterior total hip arthroplasty, the blades help retract the hip capsule and musculature, permitting an unobstructed view of the acetabulum while freeing an assistant

PRODUCT NO'S:

7425-00 [Set]

Set includes: (1) 7425-01, (1) 7425-02, (1) 7425-03, (1) 7425-04

Also available individually:

7425-01 [Small Charnley Style Locking Frame]

Dimensions: 9" x 7" (22,9 cm x 17,8 cm)

7425-02 [2" Tapered Blade]

Blade Depth: 2" (5,1 cm)

Handle Length: 7" (17,8 cm)

Blade Width: 1" (2,54 cm)

7425-03 [3" Tapered Blade]

Blade Depth: 3" (7,6 cm)

Handle Length: 7" (17,8 cm)

Blade Width: 1" (2,54 cm)

7425-04 [4" Tapered Blade]

Blade Depth: 4" (10,2 cm)

Handle Length: 7" (17,8 cm)

Blade Width: 1" (2,54 cm)

Optional Blade (Not included in Set):

7425-02-MOD [Modified 2" Tapered Blade]

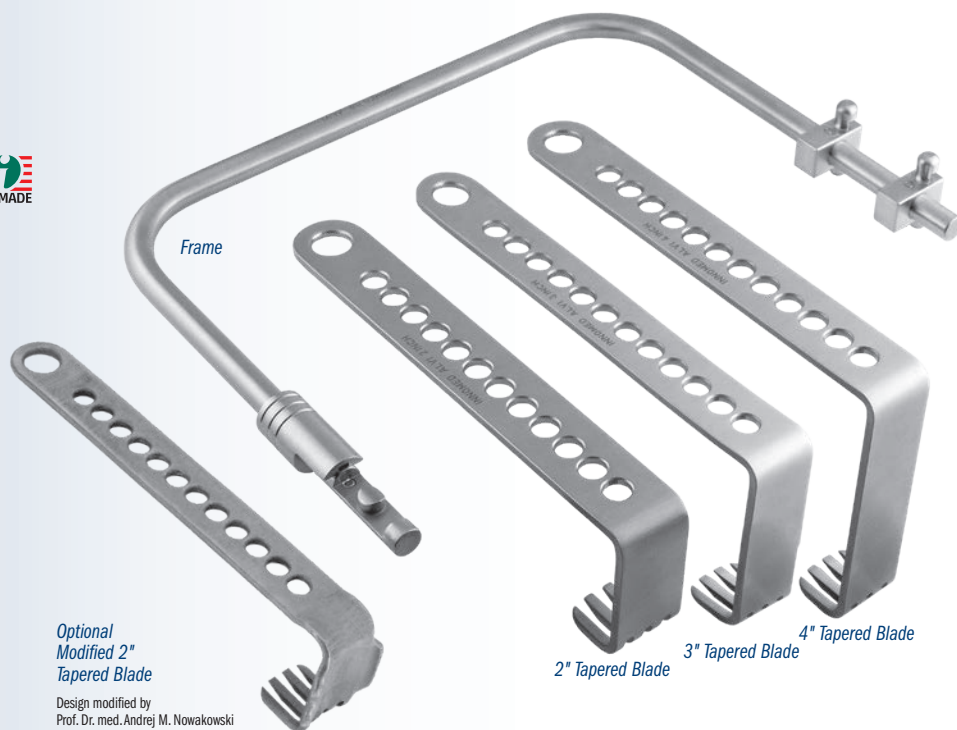
Blade Depth: 2" (5,1 cm)

Handle Length: 7" (17,8 cm)

Blade Width: 1" (2,54 cm)

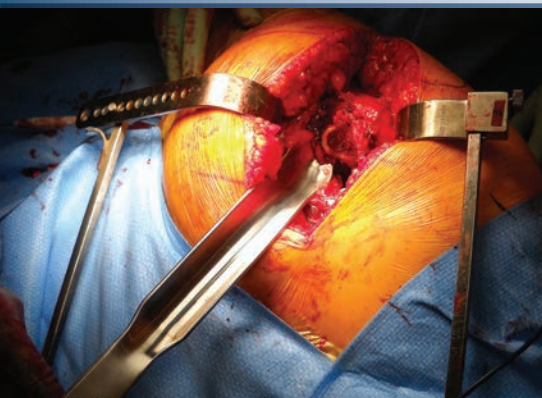
Set includes locking frame (7425-01) and one each of the three blade sizes: 2" (7425-02), 3" (7425-03), and 4" (7425-04).

(Optional Modified 2" Tapered Blade not included in set.)



Optional
Modified 2"
Tapered Blade

Design modified by
Prof. Dr. med. Andrej M. Nowakowski



Bozeman Direct Anterior THA Femoral Elevator

Designed by Daniel M. Gannon, MD

Designed to elevate the femur anteriorly, providing exposure to allow broaching of the femoral canal and final placement of the femoral component, during direct anterior approach THA

Helps to retract the TFL muscle out of the way, and provides surface area for the fulcrum effect, helping to reduce pressure on the muscle. Narrow designs helpful in minimally invasive surgery. The flared end joins the prongs to help maintain soft tissue retraction away from the broach teeth, while the two prong design helps placement lateral to the tip of the greater trochanter and elevates the femur.



PRODUCT NO'S:

6144 [Small]

Overall Length: 11.5" (29,2 cm)

Blade Neck Width: 26,1 mm

Blade Flared End Width: 30,1 mm

6146 [Medium]

Overall Length: 13.5" (34,3cm)

Blade Neck Width: 29,8 mm

Blade Flared End Width: 34,7 mm

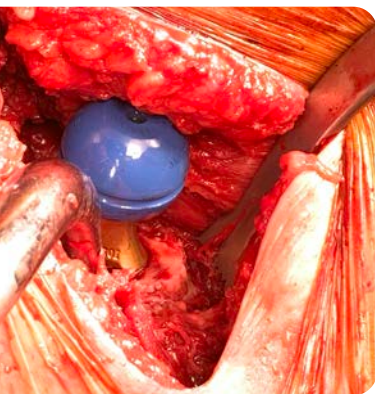
6145 [Large]

Overall Length: 15.5" (39,4 cm)

Blade Neck Width: 33,6 mm

Blade Flared End Width: 39,3 mm





Chandran Femoral Neck Retractor with Sharp Teeth

Designed by Rama Chandran, MD

Designed to grasp and expose the femoral neck, the teeth help prevent the retractor from slipping or shifting under downward pressure

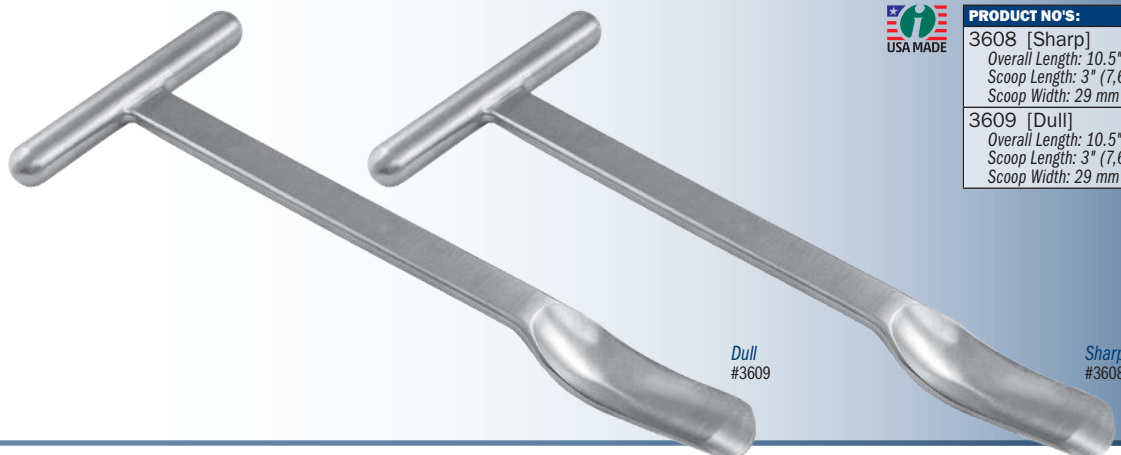
PRODUCT NO:

6141

Overall Length: 14.25" (36,2 cm)

Blade width at End: 1.25" (3,2 cm)

Prong Length: 1" (2,54 cm)



Huddleston Femoral Head Removers

Designed by H. Dennis Huddleston, MD

Designed to help lever a femoral head out of the acetabulum in standard and anterior approach total hip replacement



PRODUCT NO'S:

3608 [Sharp]

Overall Length: 10.5" (26,7 cm)

Scoop Length: 3" (7,6 cm)

Scoop Width: 29 mm

3609 [Dull]

Overall Length: 10.5" (26,7 cm)

Scoop Length: 3" (7,6 cm)

Scoop Width: 29 mm



Modified Anterior Hip Retractor

Designed to provide exposure of the proximal femur



PRODUCT NO:

6421 [Narrow Tip]

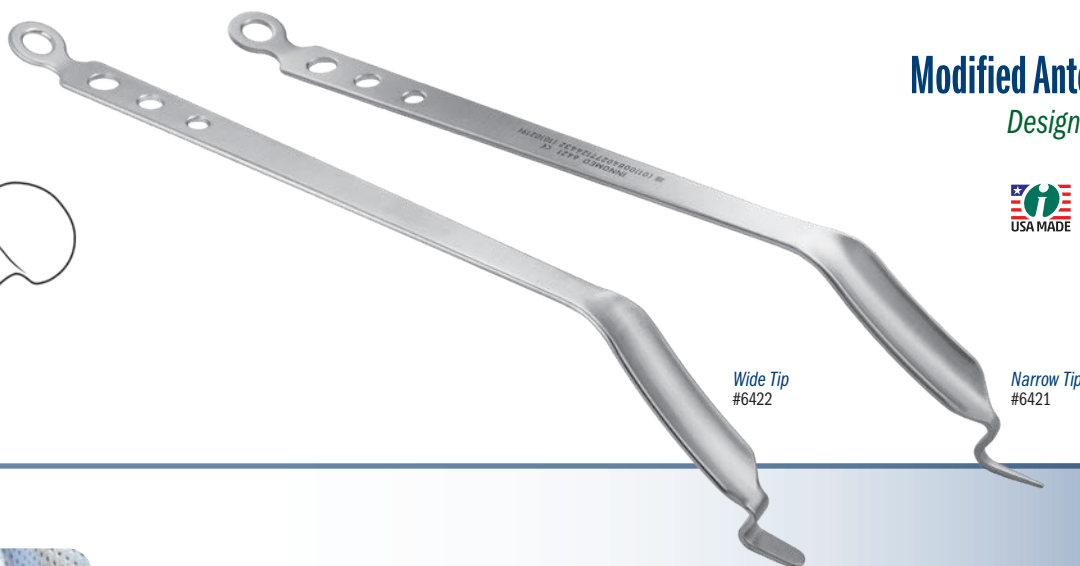
Overall Length: 15.75" (40 cm)

Blade Width: 1.15" (3 cm)

6422 [Wide Tip]

Overall Length: 15.75" (40 cm)

Blade Width: 1.15" (3 cm)



Hope Direct Anterior Femoral Retractor

Designed by Charles A. Hope, MD

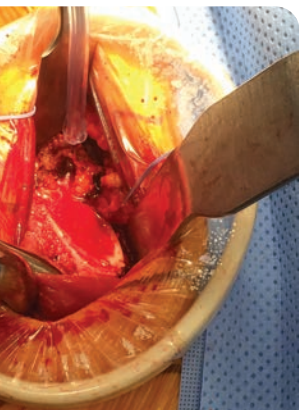
Designed to aid in exposure of the calcar femorale for proximal femoral exposure and broaching

PRODUCT NO:

5838

Overall Length: 11" (27,9 cm)

Blade Width: 1" (2,54 cm)





Alvi Modified Hohmann Retractor

Designed by Hasham Alvi, MD

Designed for use during minimally invasive anterior hip replacement surgery, the retractor is placed through the capsule, into the femoral head, allowing for retraction of the rectus femoris

The extra bend in the handle allows the assistant to stand on the operative side of the table allowing for ease of handling of the retractor.

PRODUCT NO:
4549
Overall Length: 8.75" (22.2 cm)
Blade Width: .75" (19 mm)



Whelan Femoral Neck Elevator

Designed by Edward J. Whelan, III, MD

Elevator has long tines to rest on the stronger bone at the base of the neck and calcar, and also fits well over the lesser trochanter and iliopsoas tendon for femoral broaching

PRODUCT NO:
3414
Overall Length: 13.75" (34.9 cm)
Depth from Bend: 1.5" (3.8 cm)
Blade Width: 2.4 cm

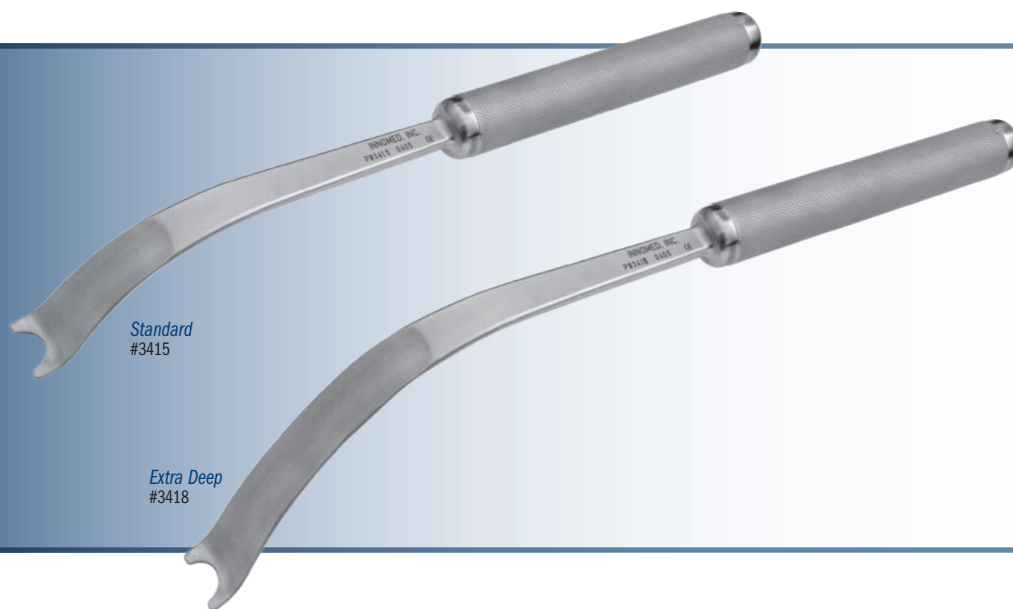


Mueller-type Femoral Neck Elevators

Extra Deep modified by Tom Eickmann, MD

Designed to elevate the proximal femur

PRODUCT NO'S:
3415 [Standard]
Overall Length: 13.5" (34.3 cm)
Handle Length: 6.5" (16.5 cm)
Blade Width at Widest: 25 mm
3418 [Extra Deep]
Overall Length: 15.25" (38.8 cm)
Handle Length: 6.5" (16.5 cm)
Blade Width at Widest: 25 mm



Hur Modified Mueller-type Femoral Neck Elevator

Wide blade design modification by John Hur, MD

Designed for the anterior approach to help expose the femoral calcar during broaching

The modified Mueller-type design non-forked end helps reduce stress risers and fractures.



PRODUCT NO:
3416
Overall Length: 13" (33 cm)
Handle Length: 6.5" (16.5 cm)
Blade Width at Widest: 1.25" (31.7 mm)



Basic Anterior Approach Instrument Set

A Basic Starter Set for the Direct Anterior Approach

Technique by Edward J. Whelan III, MD

PRODUCT NO'S:
6165-00 [Basic Anterior Approach Instrument Set] Set includes (2) #6162 and (1) of the other instruments shown below
Set Includes / Available Individually:
1576-B [Whelan Large Weitlaner Retractor – Blunt] Overall Length: 9" (22,9 cm) Blade Depth: 1" (2,54 cm)
1576-S [Whelan Large Weitlaner Retractor – Sharp] Overall Length: 9" (22,9 cm) Blade Depth: 1" (2,54 cm)
3414 [Whelan Femoral Neck Elevator] Overall Length: 13.75" (34,9 cm) Depth from Bend: 1.5" (3,8 cm) Blade Width: 2,4 cm
6162 [Modified Deep Hohmann Retractor] (2) included in set, (1) only with this product number Overall Length: 14.5" (36,9 cm) Blade Width: 25 mm
7116 [Whelan Narrow Hohmann Retractor] Overall Length: 13.25" (33,7 cm) Depth from Bend: 4.5" (11,4 cm) Blade Width: 2,4 cm
6422 [Modified Anterior Hip Retractor – Wide Tip] Overall Length: 15.75" (40 cm) Blade Width: 1.15" (3 cm)

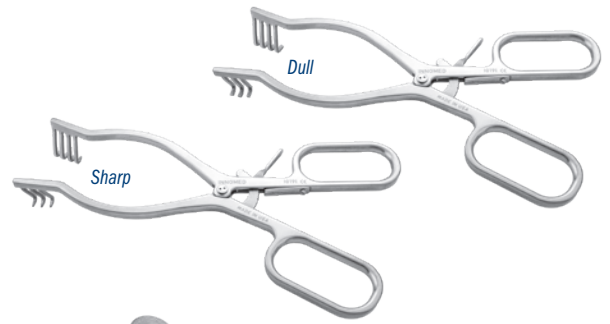


Whelan Large Anterior Hip Weitlaner Retractor with Ergonomic Handle

Designed by Edward J. Whelan, III, MD

Designed for self-retaining exposure during anterior approach THA

See page 21 for more information.

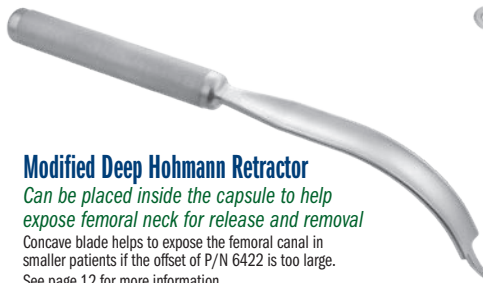


Whelan Femoral Neck Elevator

Designed by Edward J. Whelan, III, MD

Elevator has long tines to rest on the stronger bone at the base of the neck and calcar, and also fits well over the lesser trochanter and iliopsoas tendon for femoral broaching

See page 5 for more information.



Modified Deep Hohmann Retractor

Can be placed inside the capsule to help expose femoral neck for release and removal

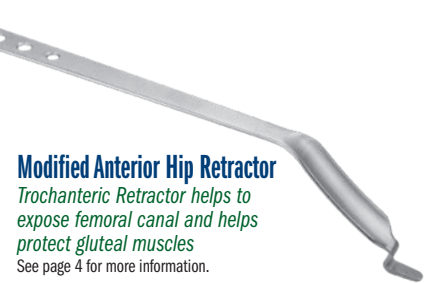
Concave blade helps to expose the femoral canal in smaller patients if the offset of P/N 6422 is too large. See page 12 for more information.

Whelan Narrow Hohmann Retractor

Designed by Edward J. Whelan, III, MD

Retractor has a large gentle right angle curve with sharp tip, for retraction of structures anterior to the acetabulum in the anterior approach to total hip

See page 11 for more information.



Modified Anterior Hip Retractor

Trochanteric Retractor helps to expose femoral canal and helps protect gluteal muscles

See page 4 for more information.

Stainless Steel Hip Surgery Ratchet Frame with Arms and Blades Sets

Designed for self-retaining wound exposure, the arms and blades of the OrthoLucent™ version are radiolucent and can be kept in place while using image intensification or taking an x-ray

- ▶ Arms rotate 180°
- ▶ Mobile Arm unit can be detached from ratchet body for cleaning

Set with OrthoLucent™ Arms and Blades

The OrthoLucent arms and blades are made of a strong, lightweight carbon fiber PEEK composite material, which is radiolucent, helps to prevent from marring component surfaces, and can be steam sterilized.

PRODUCT NO'S:
7428-00 [Stainless Steel Ratchet Frame with OrthoLucent Arms & Blades Set]
Set Includes / Available Individually:
7428-01 [Stainless Steel Ratchet Frame with OrthoLucent Arms Assembly] Dimensions (Flat): 10" x 5.625" (25,4 cm x 14,3 cm) Arms Extend: 4.25" (10,8 cm)
7427-02 [50 mm OrthoLucent Blade] Dimensions: 50 mm Deep X 25 mm Wide
7427-03 [75 mm OrthoLucent Blade] Dimensions: 75 mm Deep X 25 mm Wide
Optional Blade – Not Included In Set:
7427-04 [100 mm OrthoLucent Blade] Dimensions: 100 mm Deep X 25 mm Wide



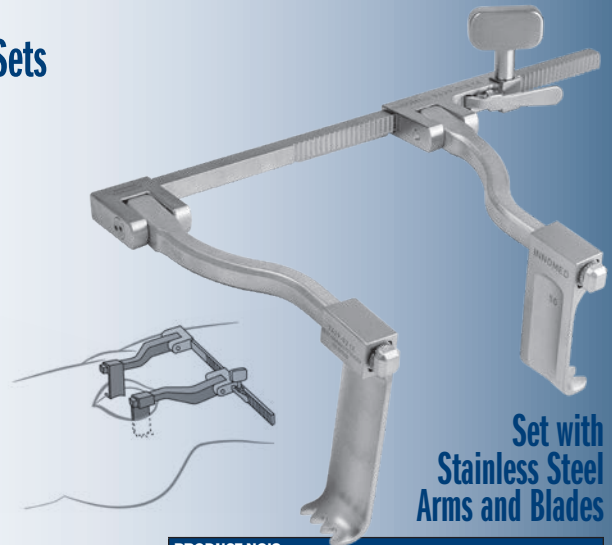
(1) 50 mm & (1) 75 mm blade included in each set.

Optional 100 mm blade available separately.



PRODUCT NO'S:
7429-00 [Stainless Steel Ratchet Frame with Stainless Steel Arms & Blades Set]
Set Includes / Available Individually:
7429-01 [Stainless Steel Ratchet Frame with Stainless Steel Arms Assembly] Dimensions (Flat): 10" x 6" (25,4 cm x 15,3 cm) Arms Extend: 4.875" (12,4 cm)
7429-02 [50 mm Stainless Steel Blade] Dimensions: 50 mm Deep X 25 mm Wide
7429-03 [75 mm Stainless Steel Blade] Dimensions: 75 mm Deep X 25 mm Wide
Optional Blade – Not Included In Set:
7429-04 [100 mm Stainless Steel Blade] Dimensions: 100 mm Deep X 25 mm Wide

Set with Stainless Steel Arms and Blades



Anterior Watson Jones Total Hip Arthroplasty System

Instrument system specifically designed for Direct Anterior approach THR

PRODUCT NO'S:	
6300-00	[Complete Set]
Available Individually:	
6301-L	[Awl – Left] Overall Length: 12.375" (31,5 cm)
6301-R	[Awl – Right] Overall Length: 12.375" (31,5 cm)
6302-01	[Lighted Mueller Retractor] Blade Width: 27 mm Handle Length: 5.5" (14 cm) Overall Length: 12.75" (32,4 cm)
6303-01	[Wide Lighted Retractor] Blade Width: 40 mm Blade Tip Length: 17 mm Overall Length: 12.75" (32,4 cm)
6304-01	[Narrow Lighted Retractor] Blade Width: 26 mm Blade Tip Length: 23 mm Overall Length: 16.5" (41,9 cm)
6305	[90° Cobra Retractor] Blade at Widest: 37 mm Blade Depth: 7.5" (19,1 cm) Blade Prong: 18 mm Long X 10 mm Wide Overall Length: 12.5" (31,8 cm) Handle Length: 9.5" (24,1 cm)
6306	[Deep Hohmann Retractor] Blade Width: 17 mm Prong Length: 34 mm Overall Length: 9.25" (23,5 cm)
6307	[Straight Hohmann Retractor] Prong Length: 4.2 cm Overall Length: 9.5" (24,1 cm)
6308	[Femoral Starter Drill] Drill Tip Dimensions: 18 mm Long X 12 mm Diameter Overall Length: 6" (15,2 cm) Shaft Length: 5.25" (13,3 cm)



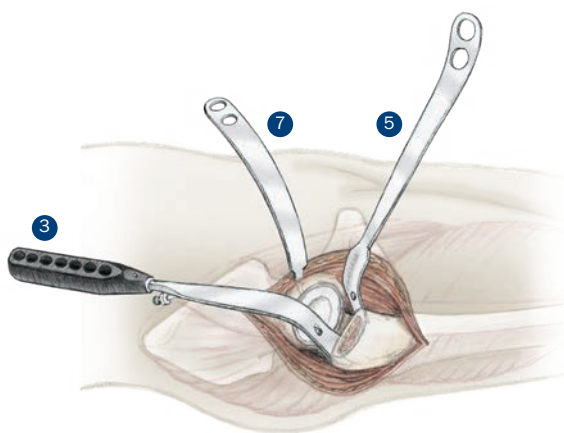
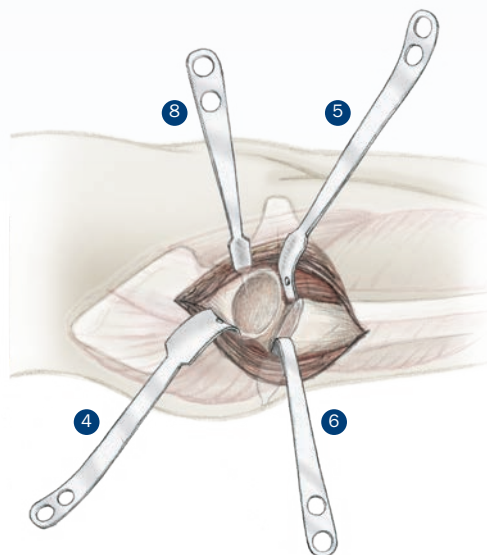
Lighted retractors attach to a fiber optic light cable with ACMI (female) connector and can be steam sterilized.

Optional quick-connect driver (NOT INCLUDED IN RETRACTOR SET) for use with the starter drill:

PRODUCT NO:	
8248	[Fixed Driver with Zimmer Hall Quick-connect] Overall Length: 5.75" (15,6 cm) Handle Width: 4.625" (11,6 cm)



Fixed Driver with Zimmer Hall Quick-connect



1 Awl – Left
#6301-L

2 Awl – Right
#6301-R

3 Lighted Mueller Retractor
#6302-01

4 Wide Lighted Retractor
#6303-01

5 Narrow Lighted Retractor
#6304-01

6 90° Cobra Retractor
#6305

7 Deep Hohmann Retractor
#6306

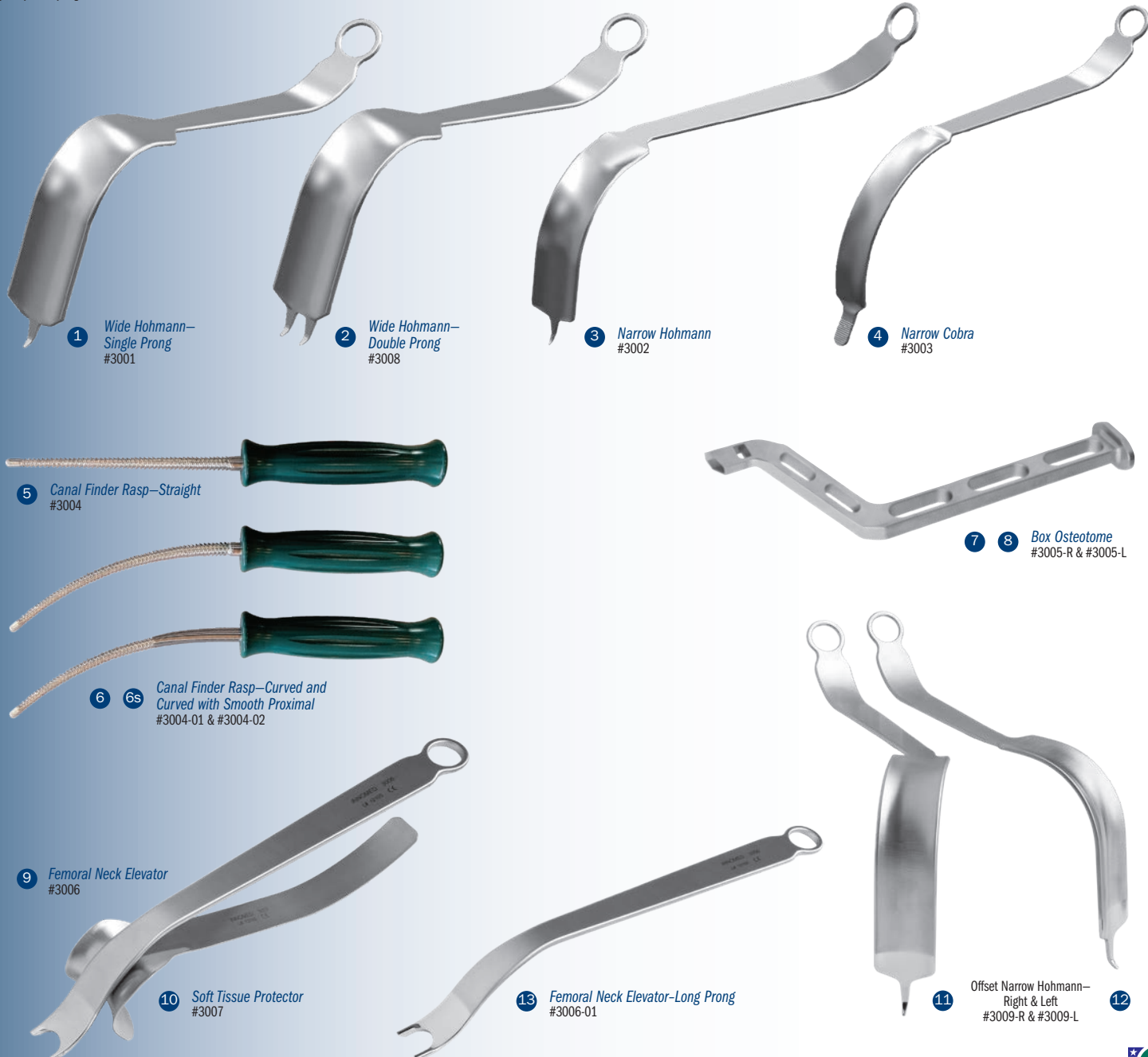
8 Straight Hohmann Retractor
#6307

9 Femoral Starter Drill with Zimmer Hall Quick-connect
#6308

Unger Anterior Total Hip Instruments

Universal instrument system specifically designed for Direct Anterior approach THR

Designed by Anthony Unger, MD



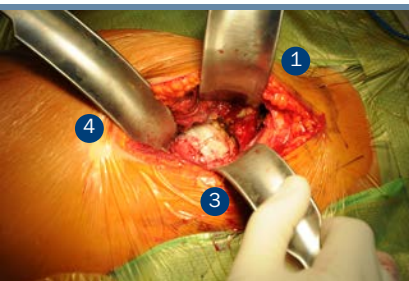
PRODUCT NO'S:

1	3001 [Unger Wide Hohmann-Single Prong] Blade Width: 44 mm Blade Depth: 5" (12,7 cm) Overall Length: 13.5" (34,3 cm)
2	3008 [Unger Wide Hohmann-Double Prong] Blade Width: 44 mm Blade Depth: 5" (12,7 cm) Overall Length: 13.5" (34,3 cm)
3	3002 [Unger Narrow Hohmann] Blade Width: 34 mm Blade Depth: 4" (10,2 cm) Overall Length: 13" (33 cm)
4	3003 [Unger Blunt Narrow Cobra] Blade Width: 34 mm Blade Width at Tip: 12 mm Blade Depth: 5.25" (13,3 cm) Overall Length: 14.5" (36,9 cm)

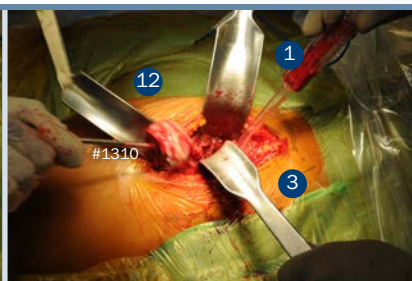
5	3004 [Unger Canal Finder Rasp-Straight] Overall Length: 11" (27,9 cm) Handle Length: 5" (12,7 cm)
6	3004-01 [Unger Canal Finder Rasp-Curved] Overall Length: 11" (27,9 cm) Handle Length: 5" (12,7 cm)
6s	3004-02 [Unger Canal Finder Rasp-Curved with Smooth Proximal] Overall Length: 11" (27,9 cm) Handle Length: 5" (12,7 cm)
7	3005-R [Unger Box Osteotome-Right] Overall Length: 12" (30,5 cm)
8	3005-L [Unger Box Osteotome-Left] Overall Length: 12" (30,5 cm)
9	3006 [Unger Femoral Neck Elevator] Blade Width at Widest: 25 mm Overall Length: 13" (33 cm) Handle Length: 9" (22,9 cm)

10	3007 [Unger Soft Tissue Protector] Blade Width: 50 mm Overall Length: 1.75" (4,4 cm) Handle Length: 10.125" (25,7 cm)
11	3009-R [Unger Offset Narrow Hohmann-Right] Blade Width: 34 mm Overall Depth: 4" (10,2 cm) Overall Length: 13" (33 cm)
12	3009-L [Unger Offset Narrow Hohmann-Left] Blade Width: 34 mm Overall Depth: 4" (10,2 cm) Overall Length: 13" (33 cm)
Optional Instruments:	
13	3006-01 [Femoral Neck Elevator-Long Prong] Blade Width at Widest: 25 mm Overall Length: 13.4" (34 cm) Handle Length: 9" (22,9 cm)

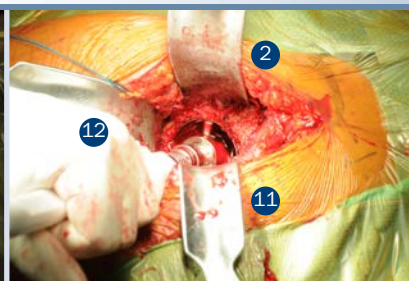




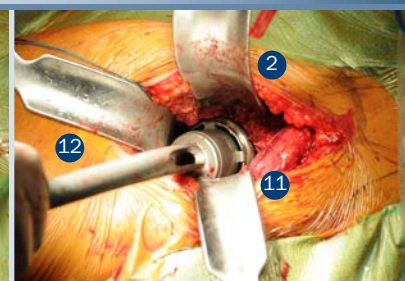
Femoral Head and Acetabular Exposure



Unger Wide Hohmann
Placed around the femoral neck to expose the anterior hip capsule.



Unger Narrow Hohmann
A curved sharp hohmann retractor placed under the posterior acetabulum to depress the femur and expose the acetabulum.



Unger Blunt Narrow Cobra
A ventral cobra retractor placed over the anterior acetabulum wall to pull the Rectus Femoris anteriorly.

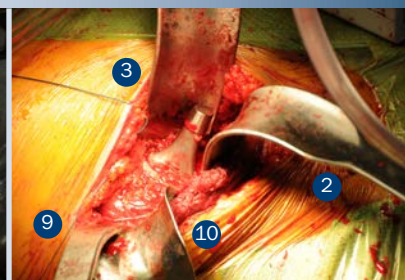
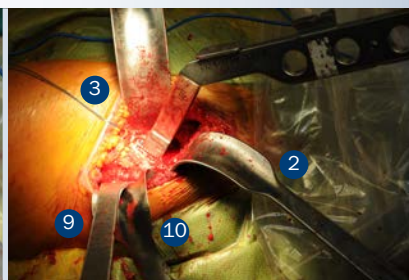
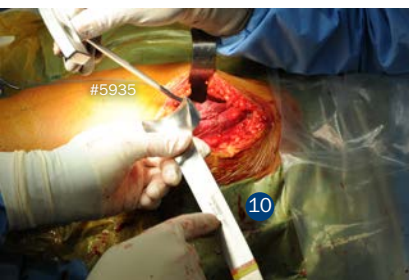


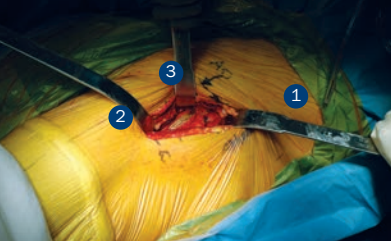
Femoral Neck Exposure

Unger Wide Hohmann
Placed medial to the femoral neck to push the femur laterally, helping to expose the femur for implant broaching and insertion.

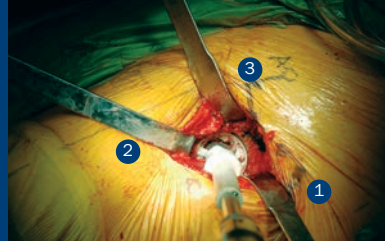
Unger Femoral Neck Elevator
A femur elevator designed to interact with the Unger Anterior Fulcrum to expose the femur. Placed behind the Greater Trochanter.

Unger Soft Tissue Protector
A unique device that protects the Tensor Fascia Lata and allows the femoral elevator to lever/push up the femur for femoral component broaching and placement.





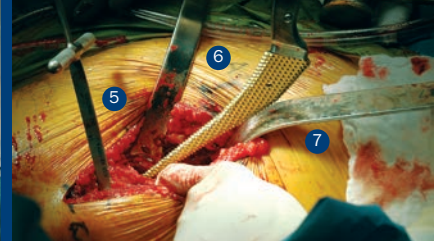
Exposure of the hip joint & removal of the femoral head



Acetabular exposure, reaming and cup insertion



Table Assembly/Elevator Hook for femoral access



Femoral broaching and stem insertion

Das/Seng Anterior Total Hip Instruments

Designed by Amal Das, MD and Brian Seng, DO

Retractor set with included table-mounted controlled-release ratcheting elevator hook, specifically designed to help simplify anterior approach total hip arthroplasty

Surgical technique available on our website.



1 Posterior Femoral Neck / Inferior Acetabular Rim Retractor #6221

2 Anterior Femoral Neck / Anteromedial Rim Retractor #6222

3 Anterolateral Acetabular Rim Retractor #6223

6 Femoral Calcar Retractor #6227

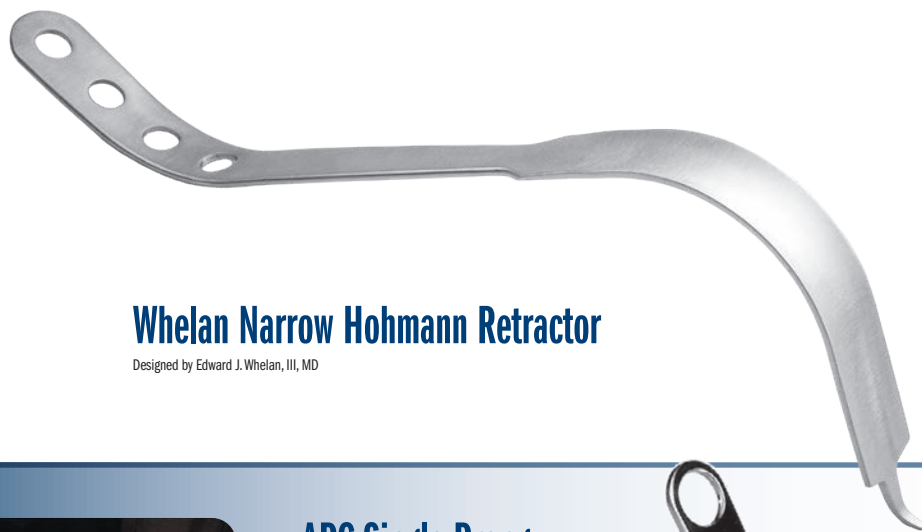
7 Greater Trochanteric Retractor #6225

5 Proximal Femoral Hook #6226-RH

Table Mounted Hook Hoist #6226-TA

PRODUCT NO.'S:	
6226-00	[Complete Set]
Set Includes / Available Individually:	
6221	[#1 - Posterior Femoral Neck / Inferior Acetabular Rim Retractor]
1	Blade Width: 25 mm Blade Depth: 3" (7,6 cm) Overall Length: 14" (35,6 cm)
6222	[#2 - Anterior Femoral Neck / Anteromedial Rim Retractor]
2	Blade Width: 31.5 mm, 10 mm @ Tip Blade Depth: 4.5" (10,2 cm) Overall Length: 15" (38,1 cm)
6223	[#3 - Anterolateral Acetabular Rim Retractor]
3	Blade Width: 18 mm Blade Depth: 3.25" (8,3 cm) Overall Length: 10" (25,4 cm)
6226-TA	[#4 - Table Mounted Hook Hoist]
4	This product number includes one 6226-RH Elevator Hook Folds to approx: 21" x 5" x 5" (53,4 cm x 12,7 cm x 12,7 cm)
6226-RH	[#5 - Proximal Femoral Hook]
5	Blade Depth from T-Handle: 7.5" (19,1 cm) Overall Length: 9.25" (23,5 cm)
6227	[#6 - Femoral Calcar Retractor]
6	Blade Width: 25 mm Blade Depth: 2" (5,1 cm) Overall Length: 14.5" (36,9 cm)
6225	[#7 - Greater Trochanteric Retractor]
7	Blade Width: 25 mm Blade Depth: 1.5" (3,8 cm) Overall Length: 14.875" (37,8 cm)





Whelan Narrow Hohmann Retractor

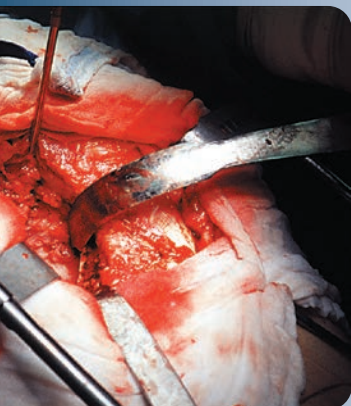
Designed by Edward J. Whelan, III, MD

Retractor has a large gentle right angle curve with sharp tip, for retraction of structures anterior to the acetabulum in the anterior approach to total hip

Helps allow for visibility without undue pressure or traction on the femoral nerve or vessels.

PRODUCT NO:

7116
Overall Length: 13.25" (33,7 cm)
Depth from Bend: 4.5" (11,4 cm)
Blade Width: 2,4 cm



APC Single Prong Hip Retractor

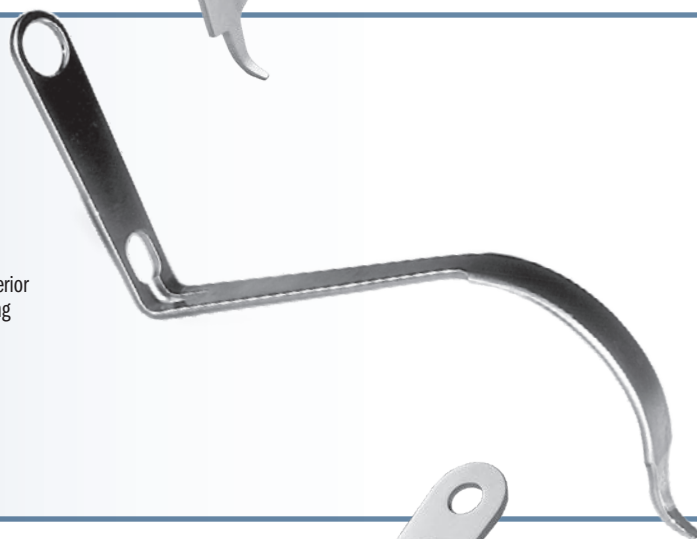
Designed by APC, Inc.

Used to help provide wide exposure of the acetabulum

Designed to be placed around the inferior-posterior edge of the acetabulum for wide exposure during total hip replacement. Modular weights can be used to help hold the retractor in place.

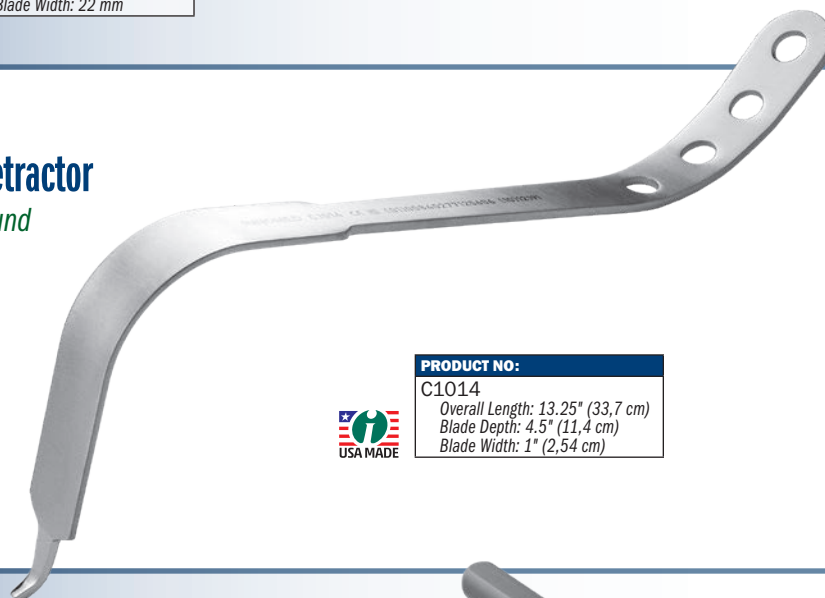
PRODUCT NO:

6420 [Single Prong]
Overall Length: 14" (35,6 cm)
Blade Width: 22 mm



Short Tip Acetabular Retractor

Designed for retraction around the acetabulum



PRODUCT NO:

C1014
Overall Length: 13.25" (33,7 cm)
Blade Depth: 4.5" (11,4 cm)
Blade Width: 1" (2,54 cm)



Modular Weights

Weights can be used to help hold the retractors in place.

PRODUCT NO'S:

3430-01	1.5 lbs. (.68 kg)
3430-02	2.0 lbs. (.91 kg)
3430-03	2.5 lbs. (1.13 kg) with attaching hook



O'Reilly Dual Handle Direct Anterior Retractor

Designed by Michael P. O'Reilly, MD

Designed for use over the anterior pelvic rim during acetabular exposure in direct anterior THA, the dual handle design allows for use in both right and left hips, as well as easy exchange of the instrument between assistants



Can be used in MIS/Direct Anterior, Total Hip Arthroplasty, Posterior/Anterolateral THA, and Hemiarthroplasty.

PRODUCT NO:

3011
Overall Length: 13.25" (33,7 cm)
Blade Depth: 4.25" (10,8 cm)
Blade Width: 1" (2,5 cm)



ABLE Advanced Anterior Approach Set

Designed for anterior MIS hip surgery

PRODUCT NO'S:

6161-00 [Set]

Set includes: (2) 6162, (1) 6163, (1) 6164

6161-01 [Set with Case]

Set includes: (2) 6162, (1) 6163, (1) 6164, (1) 6161-SC

Also available individually:

6162 [Modified Deep Hohmann Retractor – A]

(2) included in set, (1) only with this product number

Overall Length: 14.5" (36,9 cm)

Blade Width: 25 mm

6163 [Modified Small Hohmann Retractor – B]

Overall Length: 8.5" (21,6 cm)

Blade Width: 18 mm

6164 [Modified Mueller Retractor – C]

Overall Length: 15.25" (38,8 cm)

Blade Width: 25 mm

6161-SC [Storage Case]



Deep
Hohmann
#6162

Small
Hohmann
#6163

Mueller
#6164



Set In Case



Single Prong Acetabular Retractor

PRODUCT NO:

6570 [Standard]

Overall Length: 12.125" (30,8 cm)

Blade Width: 22.3 mm



Single Prong Soft Tissue Retractors

PRODUCT NO:

6450 [Standard]

Overall Length: 12.125" (30,8 cm)

Blade Width: 22.3 mm

6450-03 [Standard with Short Tip]

Overall Length: 11.75" (29,8 cm)

Blade Width: 22.3 mm

6450-02 [Straight Tip]

Overall Length: 12.125" (30,8 cm)

Blade Width: 22.3 mm



Standard
#6450

Standard
with Short Tip
#6450-03

Straight Tip
#6450-02



Chandran Anterior Retractor for THR

Design helps to prevent displacement of the retractor while reaming the acetabulum during direct anterior total hip replacement

Designed by Rama E. Chandran, MD

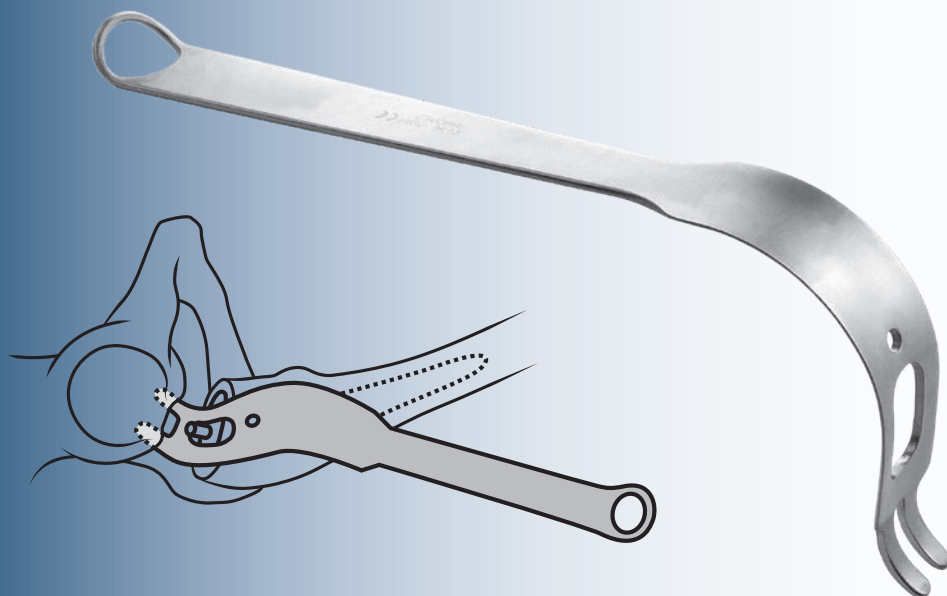
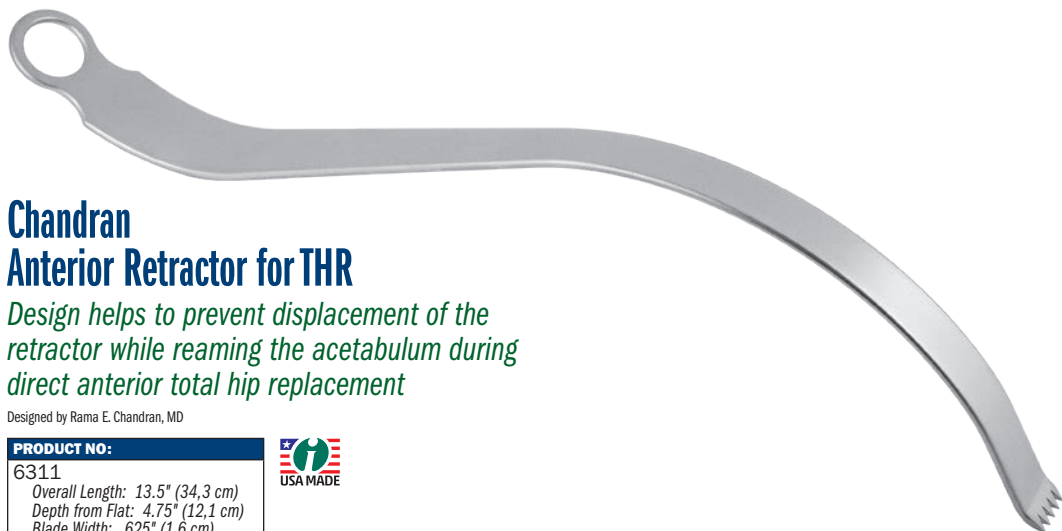
PRODUCT NO:

6311

Overall Length: 13.5" (34,3 cm)

Depth from Flat: 4.75" (12,1 cm)

Blade Width: .625" (1,6 cm)



Sinha Retractor for Acetabular Reaming

Design modification by Ajoy K. Sinha, MD

Designed to retract and protect the femur while preparing the acetabulum for reaming during antero-lateral approach total hip surgery

After the femur is prepared and the broach has been placed, the Sinha retractor is placed on the infero-lateral aspect of the acetabulum with the neck of the broach projecting through the large hole in the retractor blade. This serves to displace the femur posteriorly and to help protect the greater trochanter while acetabular reaming is conducted.

PRODUCT NO:

6174

Overall Length: 12.5" (31,8 cm)

Blade Width: 32 mm

Hole: 18 mm W x 33 mm H



PRODUCT NO'S:

C1009 [Standard]

Overall Length: 15.75" (40 cm)

Handle Length: 6.125" (15,6 cm)

Blade Depth: 4.5" (11,4 cm)

Blade Width: 1.1" (2,8 cm)

Prong Length: 1.5" (3,8 cm)

C1010 [90°]

Overall Length: 14.25" (36,2 cm)

Handle Length: 6.125" (15,6 cm)

Blade Depth: 5.25" (13,3 cm)

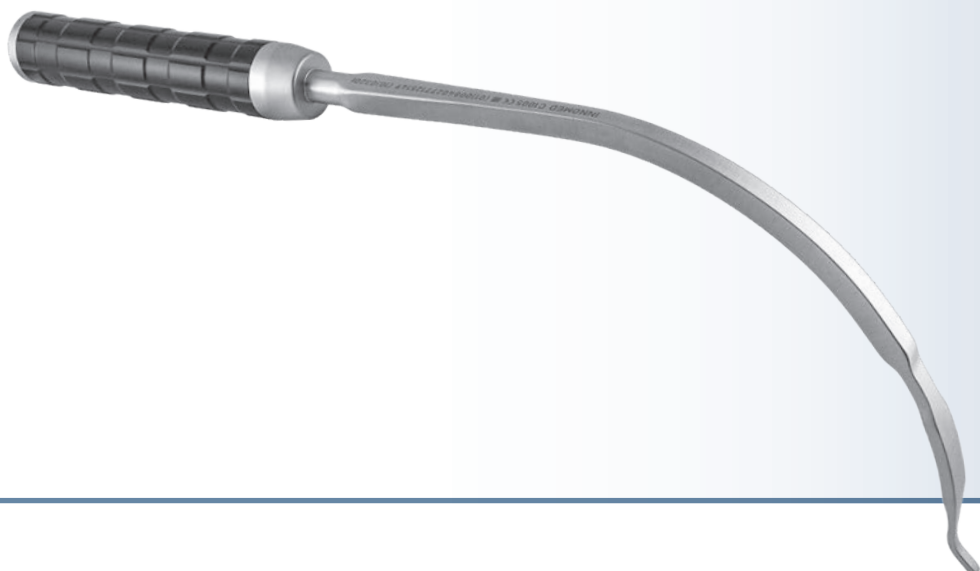
Blade Width: 1.1" (2,8 cm)

Prong Length: 1.5" (3,8 cm)



90°
#C1010

Standard
#C1009



Narrow Cobra-style Retractor with Large Handle

Designed for use around the femur and acetabulum

PRODUCT NO:

C1005

Overall Length: 17.5" (34,5 cm)

Depth from handle: 7" (17,8 cm)



Cobra Retractors

A general purpose instrument for use around the femur and acetabulum

Lighted cobra retractor can also be attached to a fiber optic light cable with ACMI (female) connector. Retractor can be steam sterilized.

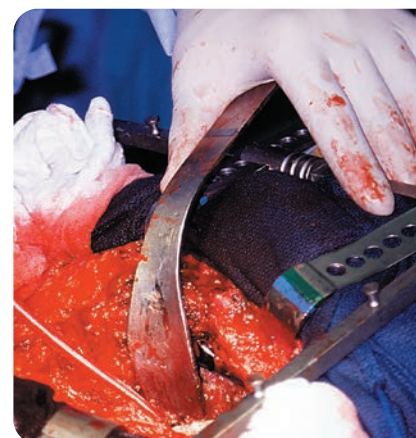
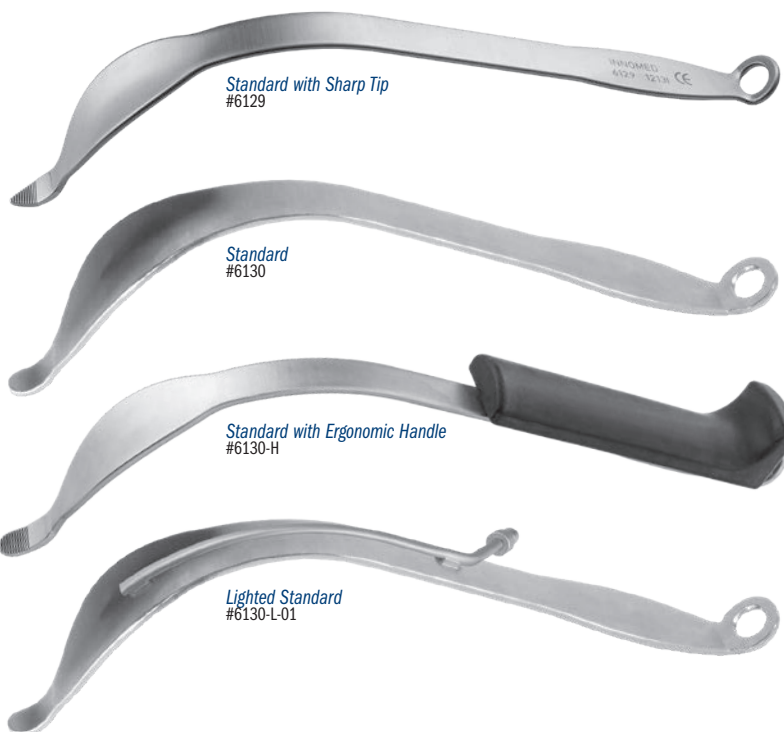
PRODUCT NO'S:

6129 [Standard w/Sharp Tip]
Overall Length: 12" (30,5 cm)
Handle Length: 7" (17,8 cm)
Blade at Widest: 33 mm

6130 [Standard]
Overall Length: 12" (30,5 cm)
Handle Length: 7" (17,8 cm)
Blade at Widest: 33 mm

6130-H [Standard with Ergonomic Handle]
Overall Length: 12" (30,5 cm)
Ergonomic Handle Length: 5" (12,7 cm)
Blade at Widest: 33 mm

6130-L-01 [Lighted Standard]
Overall Length: 12" (30,5 cm)
Handle Length: 7" (17,8 cm)
Blade Width at Widest: 33 mm



Jana Lighted Cobra Retractor

Designed by Ajoy K. Jana, MD

Designed to enhance exposure & visualization

Excellent for use in acetabular exposure and total hip replacements. Especially useful for the anterior approach. The retractor can be attached to a fiber optic light cable with ACMI (female) connector, and is steam sterilizable.

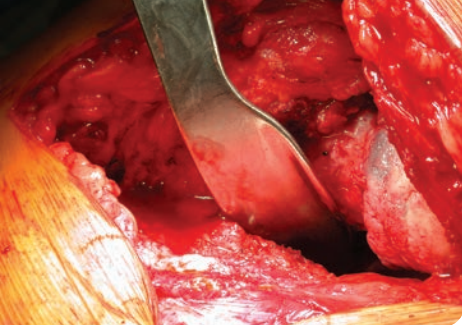
PRODUCT NO:

6119-L-01

Overall Length: 14.75" (37,5 cm)

Blade at Widest: 33 mm





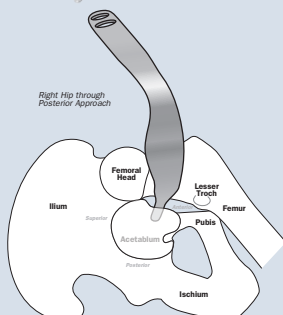
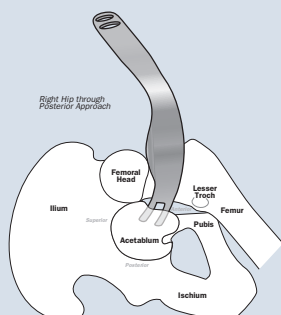
Flared Cobra Retractors

Designed by Henry Boucher, MD
Single prong design modification by Walter Frueh, MD

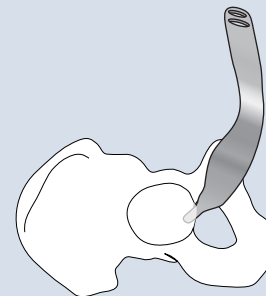
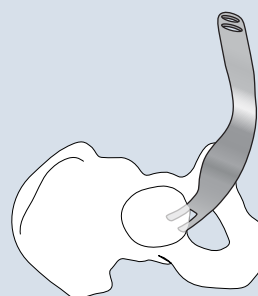


Left and right retractors can be used with the anterior, posterior or lateral approach to help expose the acetabulum in total hip surgery

PRODUCT NO'S:	
6110-01 [Double Prong - Right]	Overall Length: 15" (38 cm)
6110-02 [Double Prong - Left]	Overall Length: 15" (38 cm)
6109-L [Single Prong - Left]	Overall Length: 15" (38 cm)
6109-R [Single Prong - Right]	Overall Length: 15" (38 cm)



POSTERIOR APPROACH: Placed over the anterior acetabular wall for supero-anterior translation of the femoral head and neck during acetabular preparation. The prong(s) pierce the capsule over the anterior wall, then the curve and "twist" of the retractor allows for gentle retraction on the femoral neck.



ANTERIOR APPROACH: Placed inferior to the trans-acetabular ligament during exposure and preparation of the acetabular component. The curve and "twist" of the retractor allow for gentle retraction of the medial and inferior soft tissues and skin. Helps provide easier retraction for the assistant on the other side of the operating table.



Modified Cobra Retractor

A general purpose instrument for use around the femur and acetabulum

PRODUCT NO:	
C1012	
Overall Length: 14.5" (36,9 cm)	
Blade Depth: 5.25" (13,3 cm)	
Blade Width: 1" (2,54 cm)	

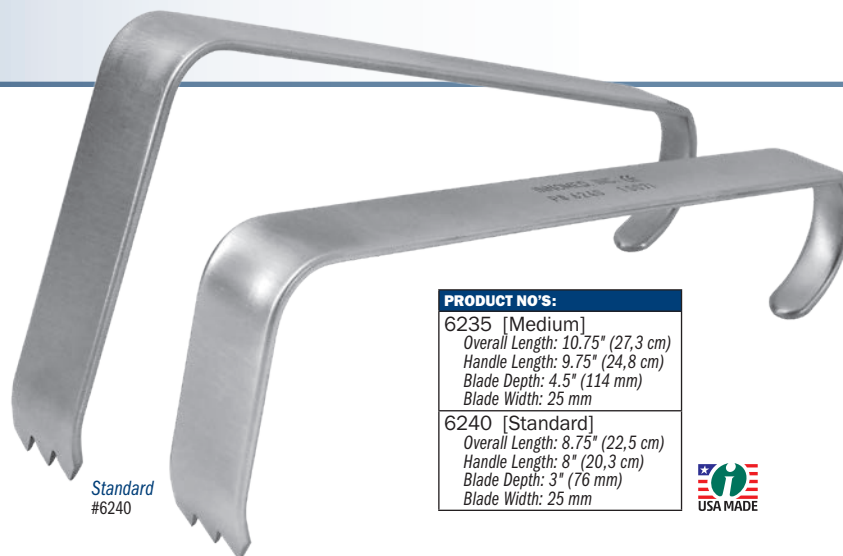


Hibbs Retractors

Designed for soft tissue retraction by either the toothed end or curved handle end

Extra large used in large patients when more leverage and depth is needed.

Medium
#6235



Standard
#6240

PRODUCT NO'S:	
6235 [Medium]	
Overall Length: 10.75" (27,3 cm)	
Handle Length: 9.75" (24,8 cm)	
Blade Depth: 4.5" (114 mm)	
Blade Width: 25 mm	
6240 [Standard]	
Overall Length: 8.75" (22,5 cm)	
Handle Length: 8" (20,3 cm)	
Blade Depth: 3" (76 mm)	
Blade Width: 25 mm	





Multi-Purpose Hip & Knee Retractors

Designed by Vasilios Mathews, MD

Designed for use in both hip and knee arthroplasty procedures

During direct anterior hip arthroplasty procedures, the fin of this retractor fits the contours of the acetabular rim and retracts the anterior soft tissues, while the short length of the spike helps limit the penetration into the neurovascular zones.

In knee surgery, the retractors can be used to help protect the patellar tendon behind the fin at the lateral tibial border. Also useful as a soft-tissue and fat pad retractor during prosthesis implantation, helping to ensure a dry cancellous bed for cementation.

PRODUCT NO'S:	
4554-L [Left]	4554-R [Right]
Overall Length: 11.25" (28,6 cm)	Overall Length: 11.25" (28,6 cm)
Blade Width: 1.5" (38 mm)	Blade Width: 1.5" (38 mm)



- ▶ Lateral flange protects the muscle of tensor fascia lata and soft tissues during insertion and removal of femoral broaching instruments
- ▶ Narrow tip for deep placement posterior to the femoral neck, anterior to the greater trochanter
- ▶ Rotation of the retractor handle helps keep the instrument against the patient and out of the surgeon's line of sight

PRODUCT NO'S:

4698-L [Left]	4698-R [Right]
Overall Length: 9.5" (24,1 cm)	Overall Length: 9.5" (24,1 cm)
Blade Width: 57 mm	Blade Width: 57 mm



O'Reilly Direct Access Anterior Broaching Retractor

Designed by Michael P. O'Reilly, MD

Designed for use in obtaining improved proximal exposure for femoral canal preparation during minimally invasive direct anterior THA

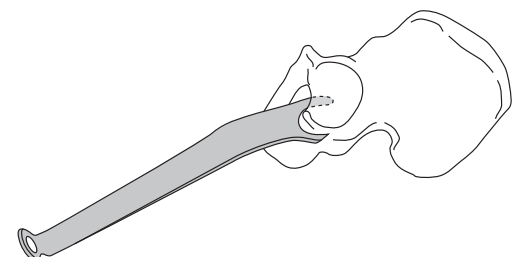
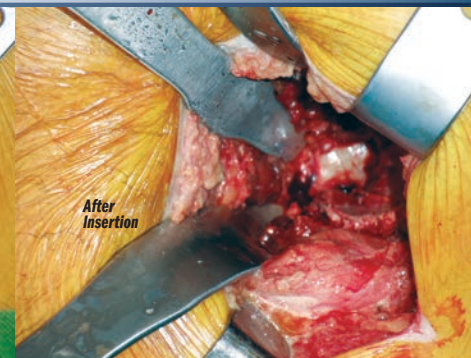
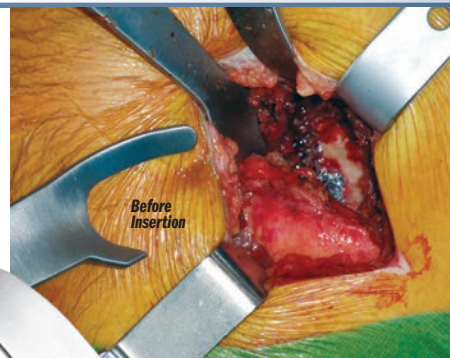
Moran Posterior-Inferior Retractor

Designed by Michael C. Moran, MD

Designed to achieve a stable position on the pelvis and expose the posterior-inferior aspect of the acetabulum

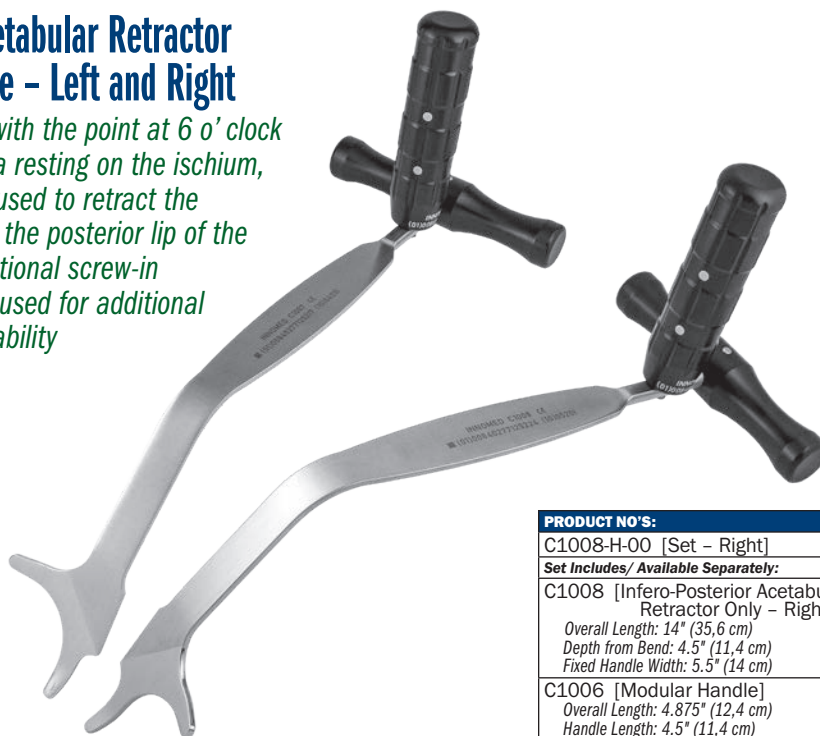
The short sharp tip is placed into the ischial sulcus behind the posterior acetabular rim. The long dull tip comes to rest behind the teardrop, while the retractor handle projects in a posterior-inferior direction.

PRODUCT NO'S:	
6415-L [Left]	6415-R [Right]
Overall Length: 12.5" (31,8 cm)	Overall Length: 12.5" (31,8 cm)



Infero-Posterior Acetabular Retractor with Modular Handle – Left and Right

Designed to be placed with the point at 6 o' clock and the retractor's axilla resting on the ischium, while the wing blade is used to retract the remaining capsule from the posterior lip of the acetabulum, and the optional screw-in modular handle can be used for additional leverage and maneuverability



PRODUCT NO'S:	
C1007-H-00	[Set – Left]
Set Includes/ Available Separately:	
C1007	[Infero-Posterior Acetabular Retractor Only – Left]
Overall Length: 14" (35,6 cm)	
Depth from Bend: 4.5" (11,4 cm)	
Fixed Handle Width: 5.5" (14 cm)	
C1006	[Modular Handle]
Overall Length: 4.875" (12,4 cm)	
Handle Length: 4.5" (11,4 cm)	

PRODUCT NO'S:	
C1008-H-00	[Set – Right]
Set Includes/ Available Separately:	
C1008	[Infero-Posterior Acetabular Retractor Only – Right]
Overall Length: 14" (35,6 cm)	
Depth from Bend: 4.5" (11,4 cm)	
Fixed Handle Width: 5.5" (14 cm)	
C1006	[Modular Handle]
Overall Length: 4.875" (12,4 cm)	
Handle Length: 4.5" (11,4 cm)	

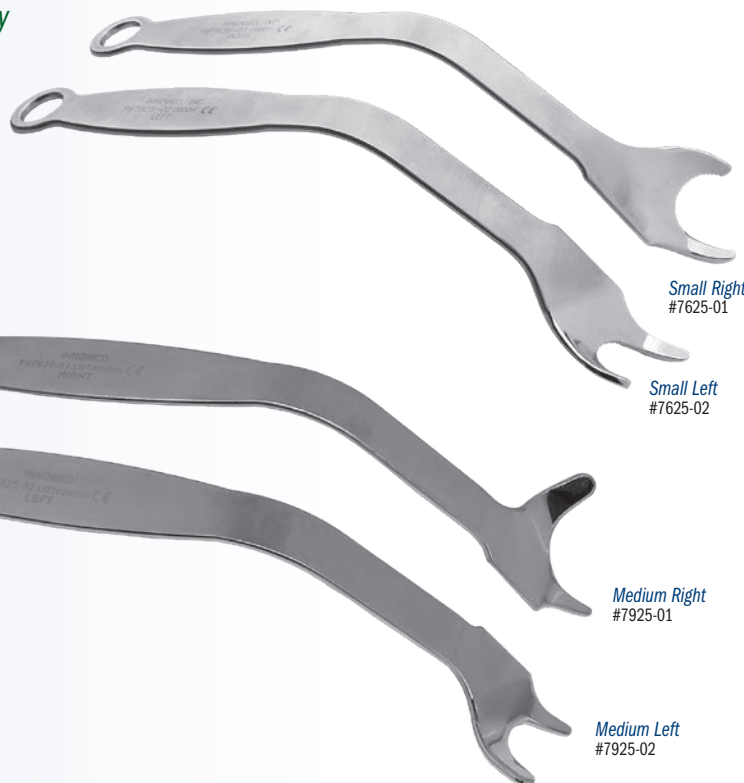


Posterior-Inferior Retractors

Designed by Wayne M. Goldstein, MD

Designed for Total Hip Surgery

The posterior-inferior retractor is placed with the point at 6 o' clock and the retractor's axilla resting on the ischium. The remaining blade of this retractor is used to retract the remaining capsule from the posterior lip of the acetabulum.



PRODUCT NO'S:		
7625-01	[Small Right]	7925-01 [Medium Right]
Overall Length: 10.75" (27,3 cm)		Overall Length: 11" (27,9 cm)
Handle-to-Bend Length: 5.5" (14 cm)		Handle-to-Bend Length: 7" (17,8 cm)
7625-02	[Small Left]	7925-02 [Medium Left]
Overall Length: 10.75" (27,3 cm)		Overall Length: 11" (27,9 cm)
Handle-to-Bend Length: 5.5" (14 cm)		Handle-to-Bend Length: 7" (17,8 cm)
7620-01	[Large Right]	7620-02 [Large Left]
Overall Length: 12" (30,5 cm)		Overall Length: 12" (30,5 cm)
Handle-to-Bend Length: 6" (15,2 cm)		Handle-to-Bend Length: 6" (15,2 cm)



Modified Wide Hohmann Retractor with Taylor Tip

Anterior and posterior acetabular retractors for all approaches, including the direct anterior approach, featuring a hammer platform for insertion with a mallet

Used as an anterior femoral elevator for the direct anterior approach, and a calcar and posterior femoral retractor for the posterior approach.

PRODUCT NO'S:

3012-00 [Set - Left & Right]

Also available individually:

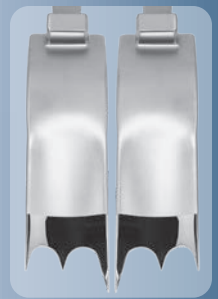
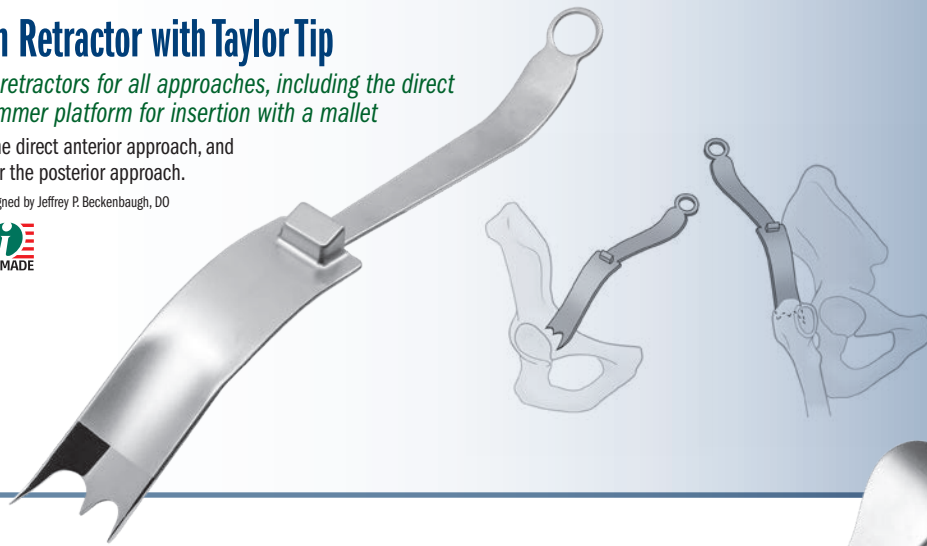
3012-L [Left]

Overall Length: 14.75" (37.5 cm)
Blade Depth: 5" (12.7 cm)
Blade Width: 45 mm

3012-R [Right]

Overall Length: 14.75" (37.5 cm)
Blade Depth: 5" (12.7 cm)
Blade Width: 45 mm

Designed by Jeffrey P. Beckenbaugh, DO



Jeffers Hip Retractor

Designed by Andrew Jeffers, MD

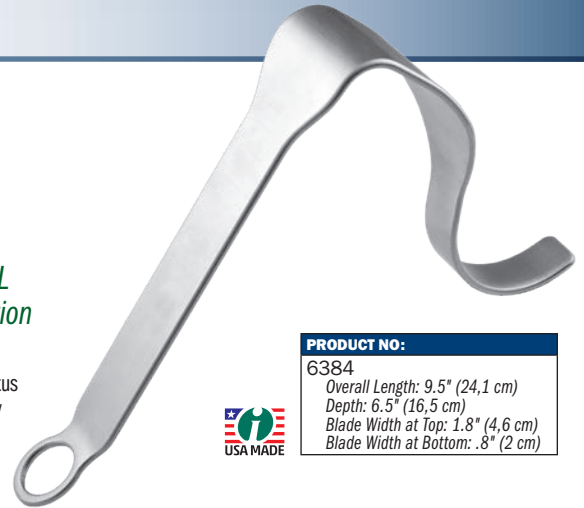
For use during the anterior approach, this retractor is designed to help protect the TFL from laceration during acetabular preparation in addition to maximizing exposure

Used with or without a weight, it is placed over the TFL and vastus lateralis and under the femur. The broad surface helps to gently retract the TFL and vastus away from the reamer path.

PRODUCT NO:

6384

Overall Length: 9.5" (24.1 cm)
Depth: 6.5" (16.5 cm)
Blade Width at Top: 1.8" (4.6 cm)
Blade Width at Bottom: .8" (2 cm)



Duke Classic Inferior Retractors with Extra Grip Tip

Designed by Justin Duke, MD

An inferior acetabular retractor designed for total hip arthroplasty while prepping the acetabulum

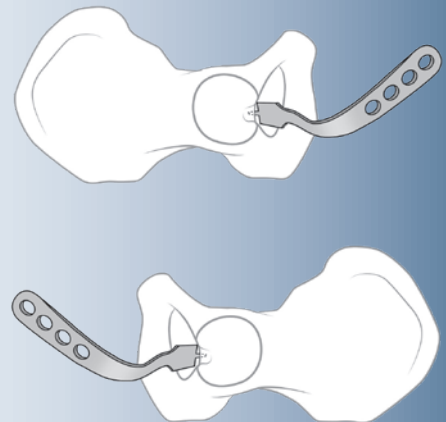
PRODUCT NO'S:

7621-01 [Left]

Overall Length: 10.25" (26 cm)
Handle Length: 5" (12.7 cm)
Depth: 7.5" (19.1 cm)
Blade Length: 2.75" (7 cm)
Blade Width: 1.125" (2.9 cm)
Prong Length: 1" (2.5 cm)
Prong Width: 6 mm

7621-02 [Right]

Overall Length: 10.25" (26 cm)
Handle Length: 5" (12.7 cm)
Depth: 7.5" (19.1 cm)
Blade Length: 2.75" (7 cm)
Blade Width: 1.125" (2.9 cm)
Prong Length: 1" (2.5 cm)
Prong Width: 6 mm



Posterior Acetabular Retractor

Designed by Amal Das, MD and Brian Seng, DO

Designed for posterior acetabular retraction during anterior approach total hip replacement surgery

PRODUCT NO:

6224

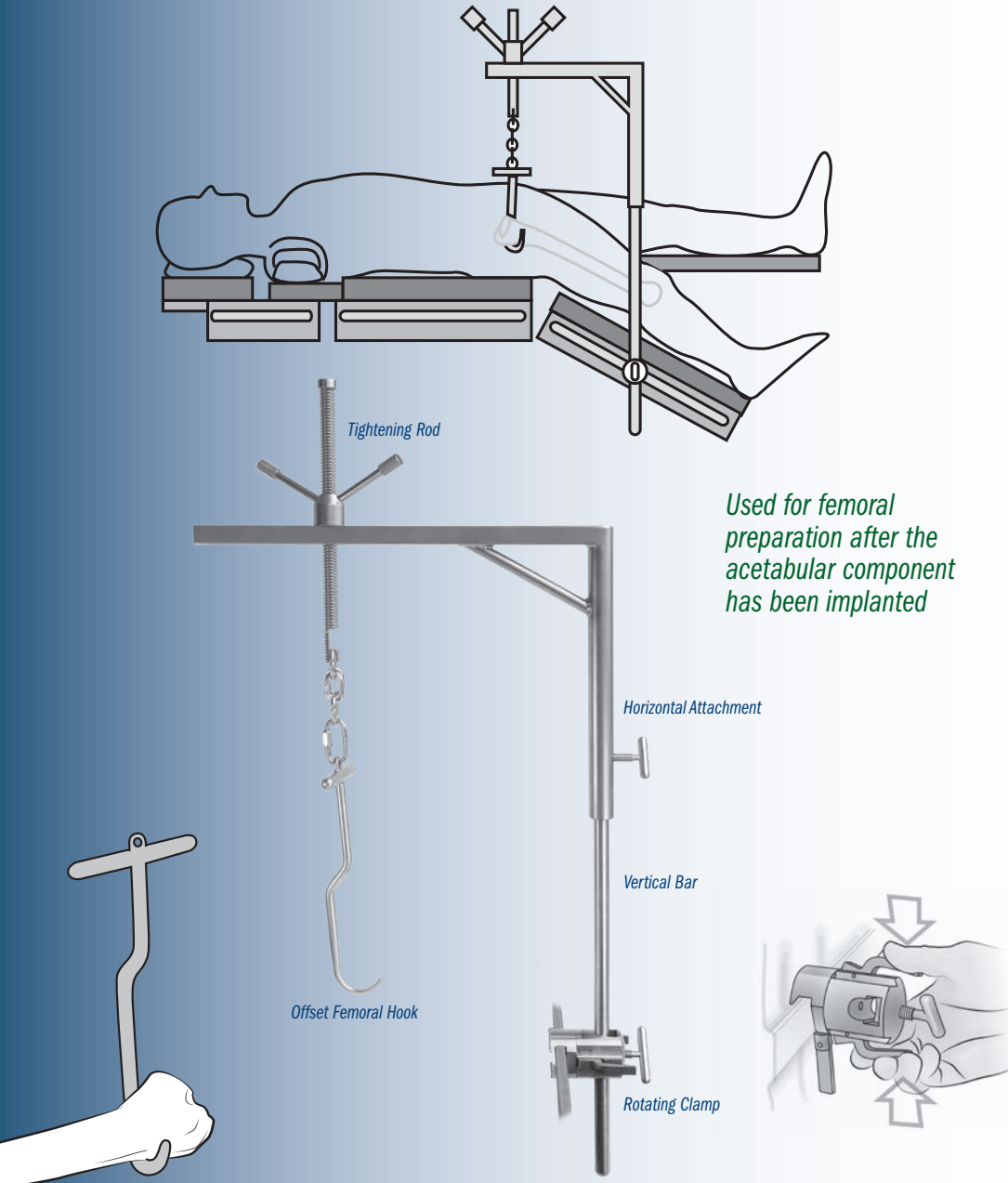
Blade Width: 25 mm
Blade Depth: 2.75" (7 cm)
Overall Length: 14" (35.6 cm)



Wixson Anterior Suspension Hook System

Designed by Richard L. Wixson, MD

Designed for use with a standard operating room table, helps to facilitate elevation of the proximal femur during direct anterior approach THR



Used for femoral preparation after the acetabular component has been implanted

The system consists of:

- 1) A **rotating clamp** that can be attached to the operating table side rails over the drapes.
- 2) A **vertical bar** that fits into the clamp and comes above the side of the table.
- 3) A **horizontal attachment** that fits over the vertical bar and can swing over the wound.
- 4) A threaded **tightening rod** that inserts through a slot in the arm of the horizontal attachment and can be used to bring up the proximal femur.
- 5) A large **offset femoral hook** that can be placed above the lesser trochanter and around the posterior femoral neck and trochanter base. The handle of the hook has a chain to attach to the threaded tightening rod coming through the horizontal arm.

PRODUCT NO.:

6245-00 [Complete Unit]

Replacement Parts:

6245-01 [Horizontal Attachment]

6245-02 [Tightening Rod]

6245-03 [Vertical Bar]

6245-04 [T-handle Bolt]

6245-05 [Offset Femoral Hook]

9125 [Rotating Table Clamp]

Complete unit includes:
Tightening rod, horizontal attachment, vertical bar, T-handle bolt, offset femoral hook, and rotating table clamp



Extension Set for Anterior THR Tables

Designed by David Ott, MD

Designed to add lift to the femoral hook during an anterior THR case and be able to remove without breaking the sterile field

PRODUCT NO'S:

8004-00 [Set of One Each]

Also available individually:

8004-S [Short Extension]

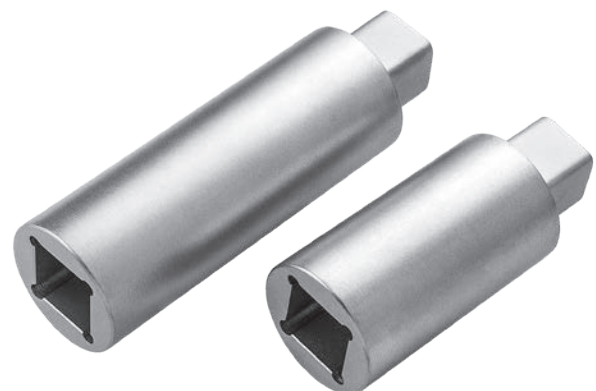
Extension Length: 2" (5,1 cm)

Overall Length: 3.625" (9,2 cm)

8004-L [Long Extension]

Extension Length: 3" (7,7 cm)

Overall Length: 2.6" (6,6 cm)



Kenerly Double Parallel Femoral Neck Disc Grasper

Design modified by J. Lex Kenerly, III, MD

Designed to remove the central disc of a double, parallel cut femoral neck osteotomy when performing THA

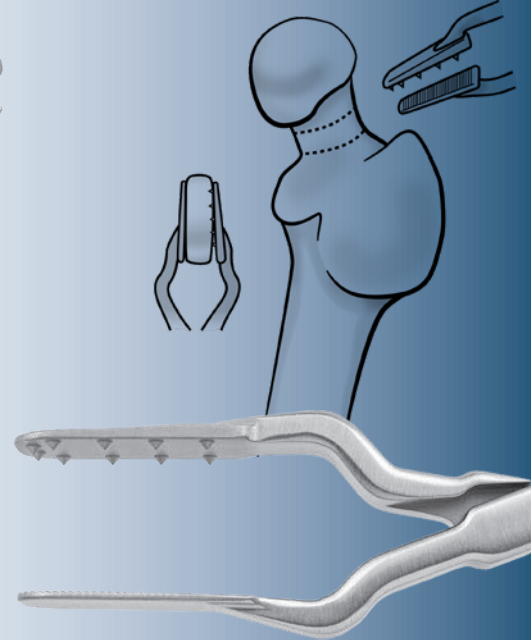
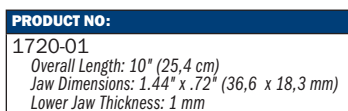
PRODUCT NO:

1720-01

Overall Length: 10" (25,4 cm)

Jaw Dimensions: 1.44" x .72" (36,6 x 18,3 mm)

Lower Jaw Thickness: 1 mm



Duellman Total Hip Trunnion Clamp

Designed by Todd Duellman, MD

Designed for use on a trial modular neck/trunnion at the time of placement on/off the femoral stem to help determine offset and neck length

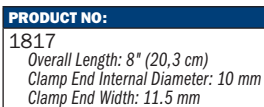
PRODUCT NO:

1817

Overall Length: 8" (20,3 cm)

Clamp End Internal Diameter: 10 mm

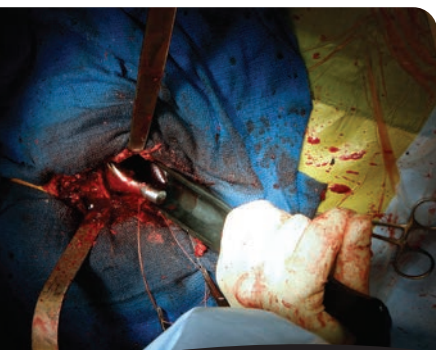
Clamp End Width: 11.5 mm



Namba Hip Slide

Designed by Robert S. Namba, MD

Safely glides femoral heads into the acetabulum – essential for ceramic heads



Helps reduce a femoral head trial and implant into the acetabulum during total hip surgery. Manufactured of delrin to help eliminate damage to the implant. Can be steam or gas sterilized and is radiolucent. Three sizes to accommodate different diameter heads.

Facilitates MIS hip replacement procedures

Smallest size now accommodates up to 40 mm

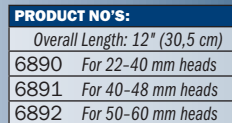
PRODUCT NO'S:

Overall Length: 12" (30,5 cm)

6890 For 22-40 mm heads

6891 For 40-48 mm heads

6892 For 50-60 mm heads

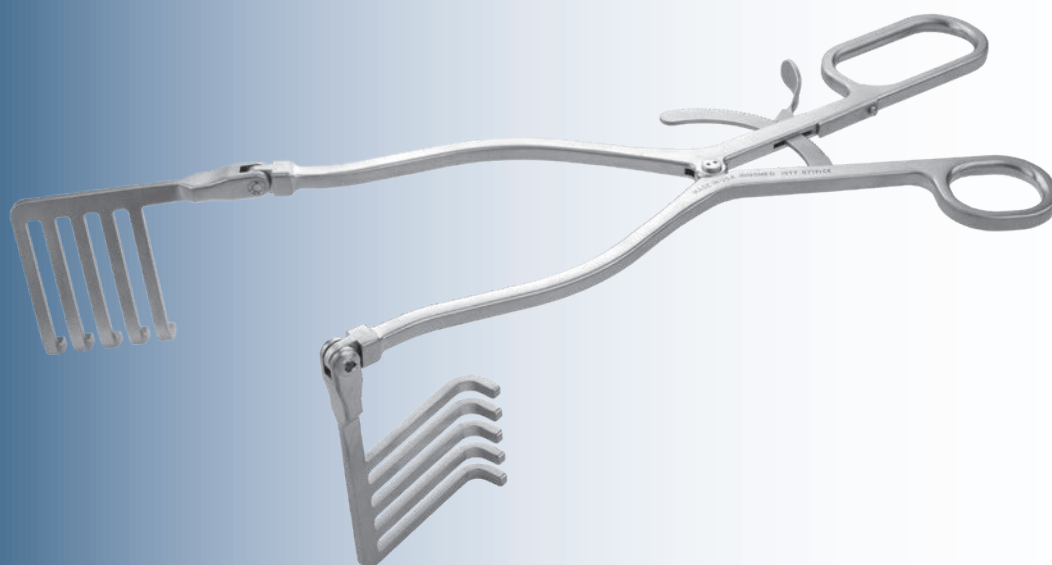
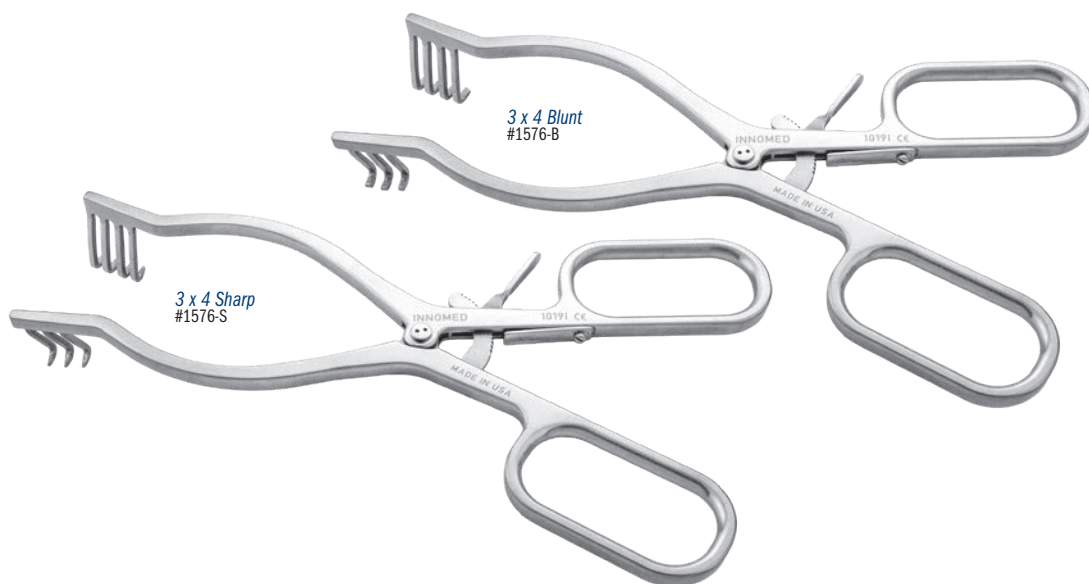


Whelan Large Anterior Hip Weitlaner Retractor with Ergonomic Handle

Designed by Edward J. Whelan III, MD

Designed for self-retaining exposure during anterior approach THA

PRODUCT NO'S:	
1576-B [Blunt]	
Overall Length: 9" (22,9 cm)	
Blade Depth: 1" (2,54 cm)	
1576-S [Sharp]	
Overall Length: 9" (22,9 cm)	
Blade Depth: 1" (2,54 cm)	

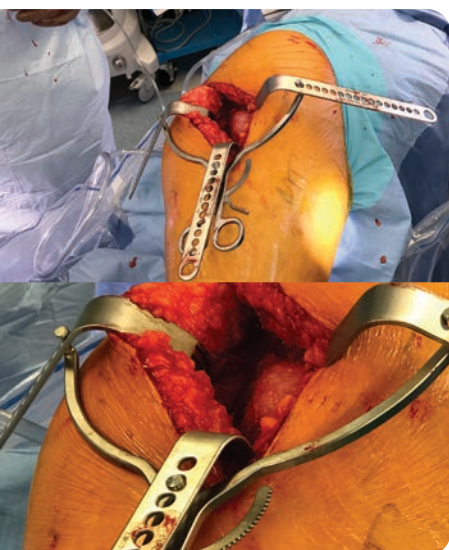


Alvi Beckman Self-Retaining Retractor

Designed by Hasham Alvi, MD

Designed for direct anterior approach hip arthroplasty, the wide, blunt and curved teeth help provide for better self-retaining retraction during dissection through the superficial and deep tissue planes to expose the hip joint

PRODUCT NO:	
1577	
Overall Length: 13" (33 cm)	
Length to Bend: 9.625" (24,4 cm)	
Depth when Full Bent: 3.125" (7,9 cm)	



Self-Retaining Tension Retractor

The expandable design allows for a wide variety of blades to be used for exposure in total joint and trauma procedures

Handle only – blades not included



Handle only – blades not included.

PRODUCT NO:	
1586	
Overall Length: 8.875" (22,5 cm)	
Maximum Width at Pegs: 8" (20,3 cm)	



Bone Hooks

Designed by R.L. Wixson, MD

PRODUCT NO'S:

5910 [Small]
Curve Diameter: 25 mm
Overall Length: 12.75" (32,4 cm)
Handle Length: 4.75" (12,1 cm)

5915 [Medium]
Curve Diameter: 35 mm
Overall Length: 12.75" (32,4 cm)
Handle Length: 4.75" (12,1 cm)

5920 [Large]
Curve Diameter: 50 mm
Overall Length: 12.75" (32,4 cm)
Handle Length: 4.75" (12,1 cm)

5920-01 [Large w/
Cable/Wire Hole]

Designed by: R.L. Wixson, MD & J. McCarthy, MD
Cable/Wire Hole Diameter: 2 mm
Curve Diameter: 50 mm
Overall Length: 12.75" (32,4 cm)
Handle Length: 4.75" (12,1 cm)



Sarraf Coated Hip Dislocation Hook

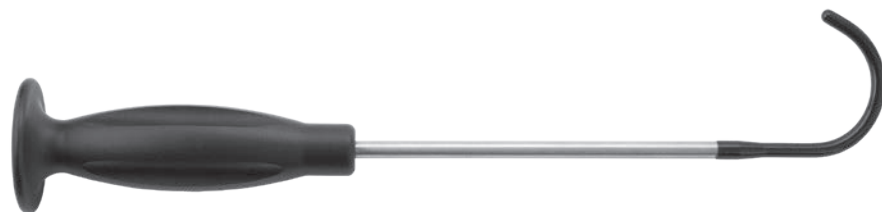
Designed by Khaled M. Sarraf, MD

Designed to aid in dislocating a femoral stem while helping to prevent damage to the trunnion

- ▶ Coated hook end helps to prevent from marring component surfaces.
- ▶ Can also be used as a bone hook, and for femoral elevation.

PRODUCT NO:

5905
Curve Diameter: 50 mm
Overall Length: 12.5" (31,8 cm)
Handle Length: 4.75" (12,1 cm)



Lombardi Bone Hooks

Designed by Adolph V. Lombardi, MD

PRODUCT NO'S:

5925 [Small]
Curve Diameter: 25 mm
Overall Length: 10" (25,4 cm)

5930 [Medium]
Curve Diameter: 35 mm
Overall Length: 10" (25,4 cm)

5935 [Large]
Curve Diameter: 55 mm
Overall length: 10" (25,4 cm)



Small

Ends drawn at actual size

Medium

Large

Kim Anterior Total Hip Awl

Designed by William C. Kim, MD

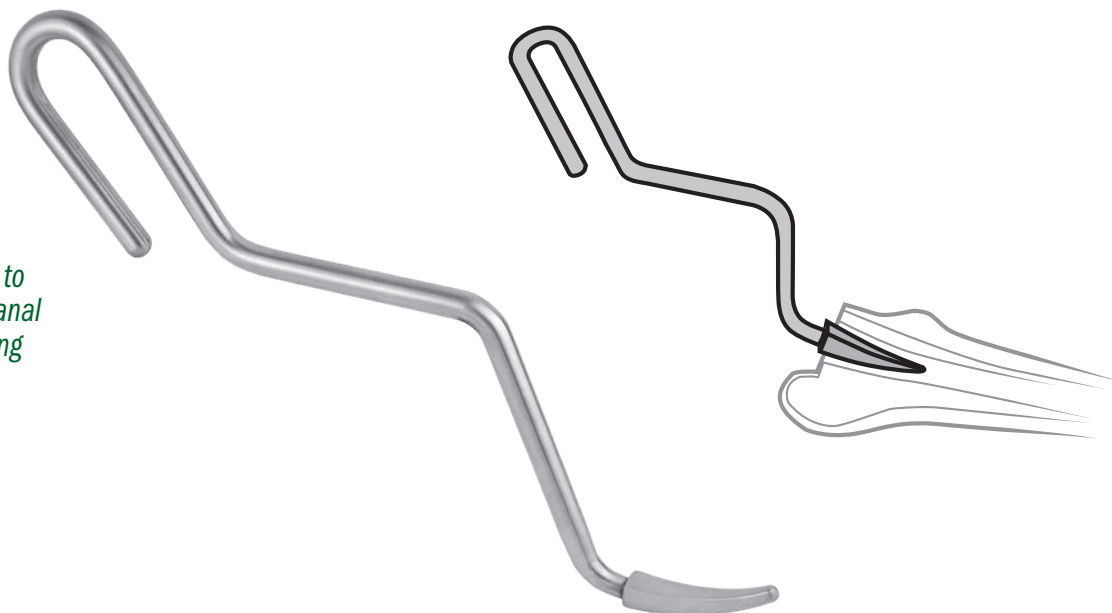
Designed to help avoid perforation of the femoral canal while helping to give an accurate assessment of canal orientation for trial broaching during anterior approach THA

PRODUCT NO:

8028

Overall Length: 12" (30,5 cm)

Blunt Reamer Length: 2" (5,1 cm)



Wertz Anterior THA Femoral Elevator

Designed by Michael P. Wertz, MD

Helps deliver the femur out of the incision during anterior total hip arthroplasty

Inserted into the femoral canal for elevation, the knurled underside helps to reduce the chance of slippage.

Knurled to help reduce the chance of slippage ▶



PRODUCT NO:

6148

Overall Length: 12.625" (32,1 cm)

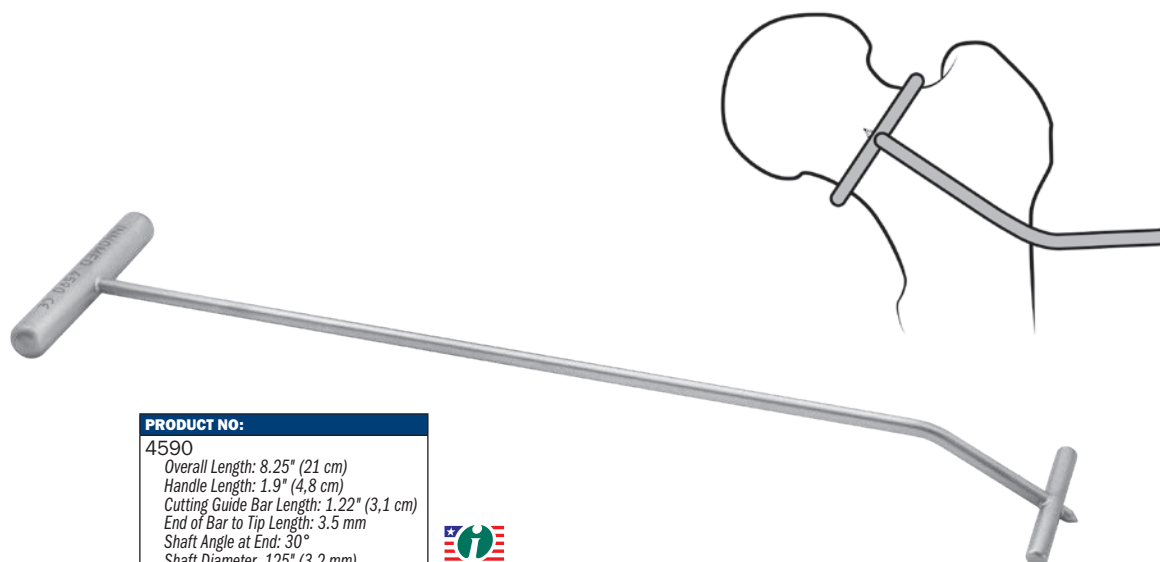
Blade Length: 3" (7,6 cm)



Kenerly Femoral Neck Cutting Guide

Designed by J. Lex Kenerly, III, MD

Designed for use during the anterior approach for THA to help determine the femoral neck osteotomy location, the guide is placed on the femoral neck and adjusted using the intraoperative C-arm image to visualize and compare to the pre-op templating, providing an excellent location for the initial femoral neck osteotomy



PRODUCT NO:

4590

Overall Length: 8.25" (21 cm)

Handle Length: 1.9" (4,8 cm)

Cutting Guide Bar Length: 1.22" (3,1 cm)

End of Bar to Tip Length: 3.5 mm

Shaft Angle at End: 30°

Shaft Diameter .125" (3,2 mm)



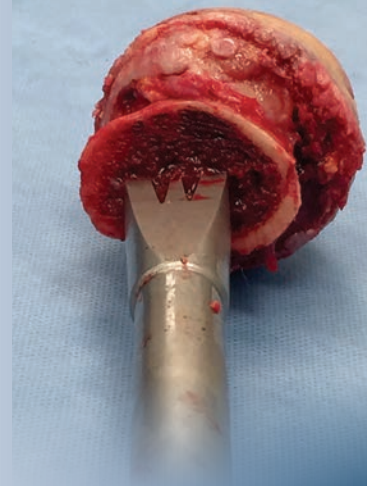
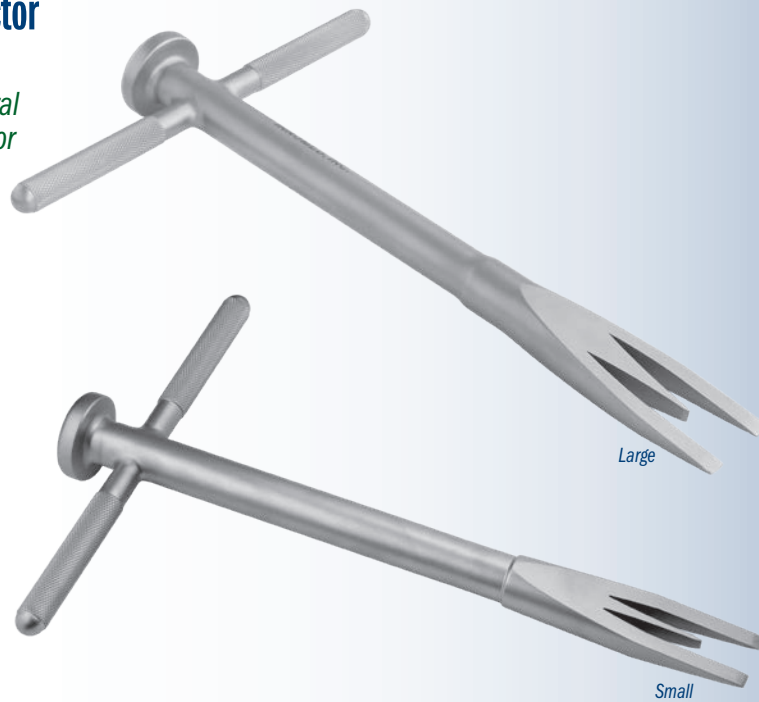
O'Reilly Femoral Head Extractor

Designed by Michael P. O'Reilly, MD
Small version designed modification by Tarum Bhargava, MD

Designed to help remove the femoral head during THA, MIS Direct Anterior THA, and hip fracture surgery/hemiarthroplasty

The perpendicular osteotome blades help provide purchase in osteoporotic bone, while the central osteotome provides a visual estimate of the instrument's depth of penetration to avoid acetabular injury with use during hemiarthroplasty.

The handle helps obtain rotational torque needed to rotate and dislocate the femoral head in direct anterior hip arthroplasty.



PRODUCT NO'S:	
3675 [Large]	Overall Length: 9.5" (24,1 cm) Hammer Platform Diameter: 1.125" (2,9 cm) Width at End: 1.1" (2,8 cm)
3674 [Small]	Overall Length: 9.5" (24,1 cm) Hammer Platform Diameter: 1.125" (2,9 cm) Width at End: .75" (1,9 cm)



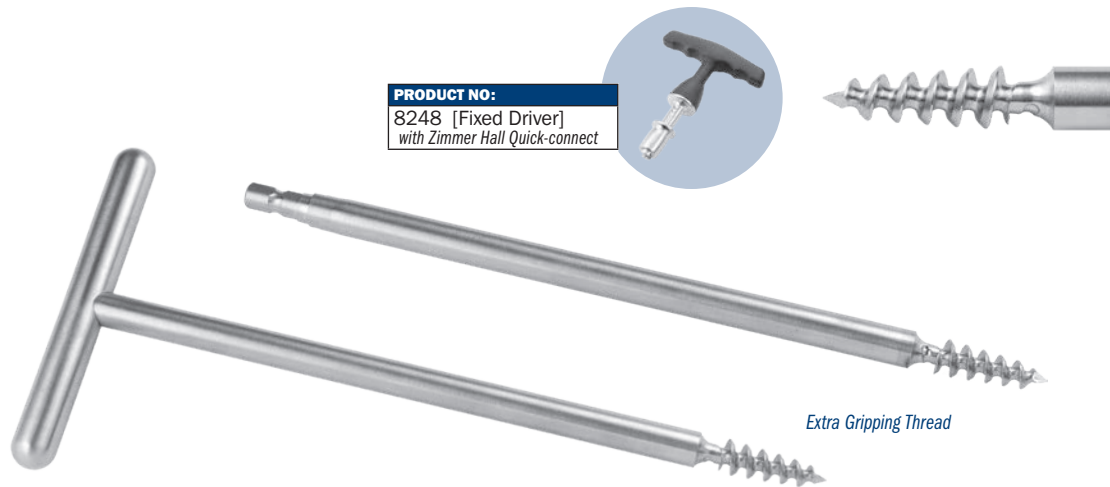
Rivero Extra Grip Femoral Head Removers

Modified by Dennis Rivero, MD

Used to remove femoral heads during total hip arthroplasty or fracture surgery

Quick-connect version for use with a driver.

PRODUCT NO'S:	
3706 [Zimmer Hall Quick-connect]	Overall Length: 8.5" (21,6 cm)
3707 [T-Handle]	Overall Length: 8.75" (22,2 cm)



PRODUCT NO:	
8248 [Fixed Driver]	with Zimmer Hall Quick-connect



Extra Gripping Thread

Femoral Head Removers

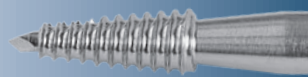
Used to remove a femoral head during total hip arthroplasty or fracture surgery

Quick-connect version for use with a driver.

PRODUCT NO'S:	
3688 [Zimmer Hall Quick-connect]	Overall Length: 8.5" (21,6 cm)
3690 [T-Handle]	Overall Length: 8.75" (22,2 cm)



PRODUCT NO:	
8248 [Fixed Driver]	with Zimmer Hall Quick-connect



Verner Corkscrew Femoral Head Remover

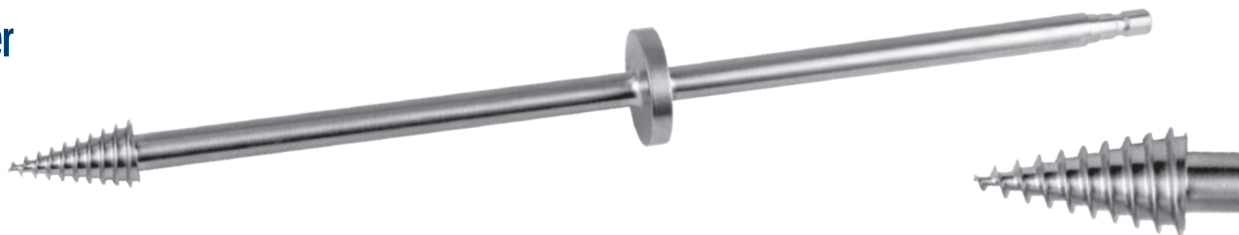
Designed by James J. Verner, MD & Andy Lytle

Used to remove the femoral head during total hip arthroplasty or fracture surgery

Designed so the threads engage the head under power and draws the corkscrew in until the head begins to turn.

The extra long shaft keeps the power reamer out of the operative site for better visualization and improves the lever arm when pivoting the head out of the acetabulum. The grip ring allows the surgeon to pull head out of acetabulum and soft tissue envelope when disengaged from the driver.

Features a Zimmer Hall Quick-connect for use with a driver.



PRODUCT NO:

3698

Overall Length: 12.25" (31,1 cm)



PRODUCT NO:

8248 [Fixed Driver]

with Zimmer Hall Quick-connect

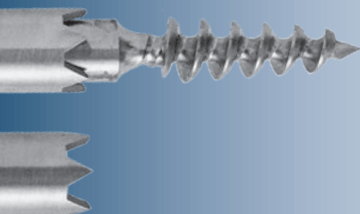


Rivero Anti-Rotation Corkscrew Femoral Head Remover

Designed by Dennis Rivero, MD

Designed to help prevent rotation while engaging a femoral head for removal

The sharp-toothed sleeve can be tapped in to help provide purchase of the femoral head, then held to help prevent rotation as the super-threaded corkscrew is turned to engage the head for removal.



PRODUCT NO'S:

3705 [Corkscrew & Sleeve Set]
Overall Length: 10" (25,4 cm)

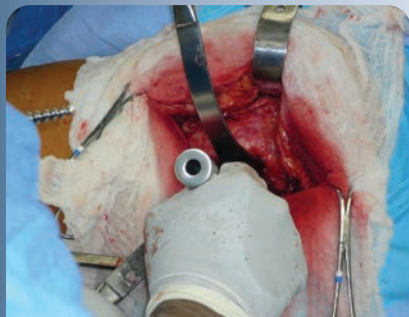
Individual Instruments:

3705-01 [Corkscrew Only]
Overall Length: 10" (25,4 cm)

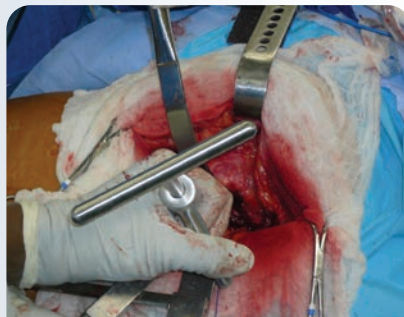
3705-02 [Sleeve Only]
Overall Length: 8" (20,3 cm)



STABILIZE HEAD



INSERT/ENGAGE CORKSCREW



REMOVE HEAD



Schantz Pin with Zimmer Hall Quick-connect

Designed by Keith Berend, MD

Used to help remove a femoral head during total hip surgery

PRODUCT NO:

3687

Overall Length: 8.625" (21,9 cm)

Shaft Length: 7.375" (18,7 cm)

Thread Length: 2.5" (6,4 cm)

Diameter: 4.5 mm



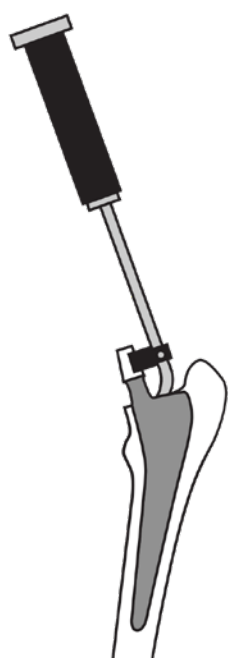
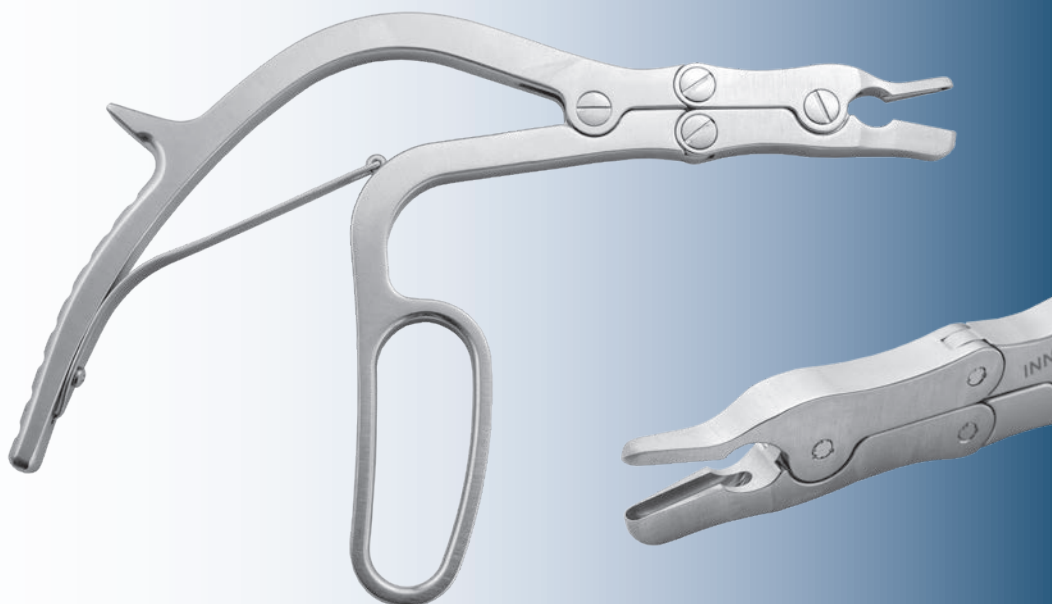
Partial threaded pin can be used to help remove a femoral head during total hip surgery. Especially helpful in minimally invasive total hip surgery where access to the femoral head is limited. Connects with a Zimmer Hall Quick-connect.

Modified Rongeur with Pistol Grip Handle

Design modification by Morteza Meftah, MD and Ira Kirschenbaum, MD, of an original design by James T. Mazzara, MD.

A thin top cutter and deep lower cutter, with edges that are rounded off, allows the top cutter to slide into a tight space— specifically the acetabulum or the patella—while the pistol grip helps lessen hand fatigue and slippage, and allows for better visualization

PRODUCT NO:
1765
Jaw Bite Length: 18 mm
Jaw Bite Width: Tapered from 7 to 4.5 mm
Overall Length: 10" (25,4 cm)



Bhargava DAA Femoral Stem Impactor

Designed by Tarun Bhargava, MD

Helps allow for easier impaction of most femoral stems through the DAA approach — protects the trunnion and helps allow for control of version during impaction

PRODUCT NO:
5308
Overall Length: 10" (25,4 cm)



Anterior Hip Referencing Rod Assembly

Designed by Scott A. Foster, MD

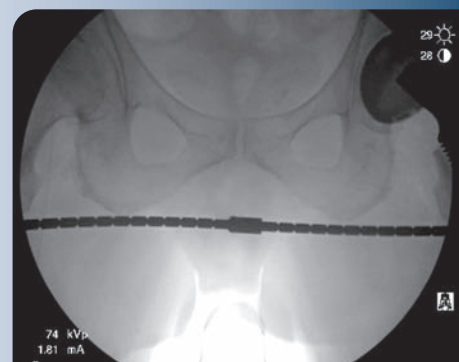
For use during intraoperative imaging while performing anterior hip arthroplasty to help determine implant fit, position, alignment and recreation of leg length and offset using the contralateral hip for reference

PRODUCT NO'S:
2674-00 [Complete Assembly] Overall Length: 27.75" (70,5 cm) Rod Diameter: .25" (6,3 mm)
2674-A [Top Assembly] Overall Length: 16.75" (42,6 cm) Rod Diameter: .25" (6,3 mm)
2674-B [Bottom Assembly] Overall Length: 10.5" (26,7 cm) Rod Diameter: .25" (6,3 mm)

Midshaft coupler allows the unit to fit into a traditional tray



- ▶ Designed to be overlayed on the pelvis during the imaging part of the procedure to compare leg length and offset to the contralateral hip using the trans teardrop or trans ischial line as reference
- ▶ Extended length allows the surgeons hands to remain outside of the imaging beam
- ▶ Notched in increments of 1 cm for ease of reference
- ▶ Features a threaded coupler midshaft to break down for processing and storage, allowing the unit to fit into a traditional tray



Hannum Tissue Grasper

Designed by Scott Hannum, MD

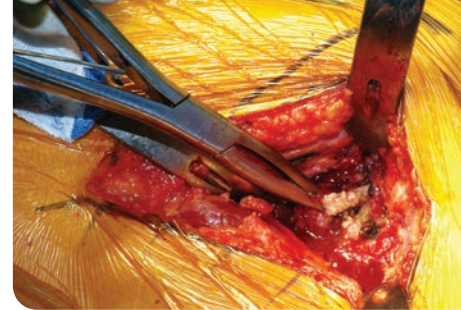
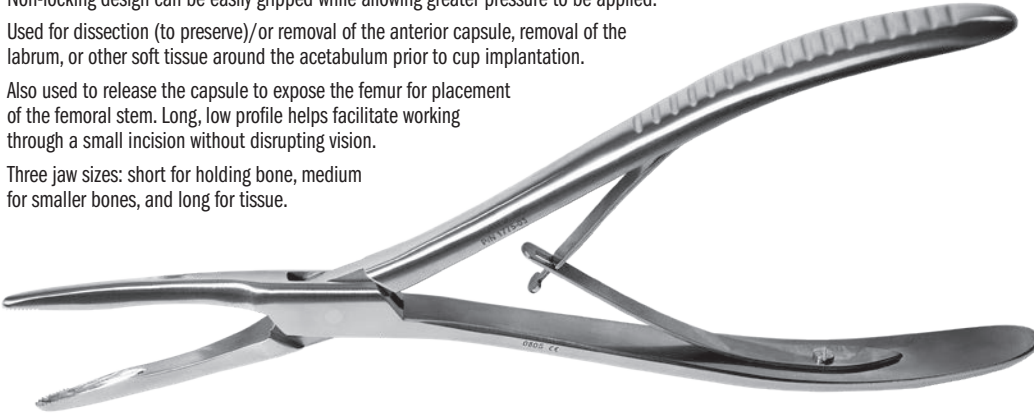
Teeth in jaw firmly holds bone and tissue

Non-locking design can be easily gripped while allowing greater pressure to be applied.

Used for dissection (to preserve)/or removal of the anterior capsule, removal of the labrum, or other soft tissue around the acetabulum prior to cup implantation.

Also used to release the capsule to expose the femur for placement of the femoral stem. Long, low profile helps facilitate working through a small incision without disrupting vision.

Three jaw sizes: short for holding bone, medium for smaller bones, and long for tissue.



Jaw widths
(at actual size)

8 mm

5 mm

3 mm

PRODUCT NO'S:

1775-01 [Short Jaw]
8 mm Jaw Width
Overall Length: 9.25" (23,5 cm)

1775-02 [Medium Jaw]
5 mm Jaw Width
Overall Length: 9.25" (23,5 cm)

1775-03 [Long Jaw]
3 mm Jaw Width
Overall Length: 9.25" (23,5 cm)

MADE EXCLUSIVELY
FOR INNOVED IN
GERMANY

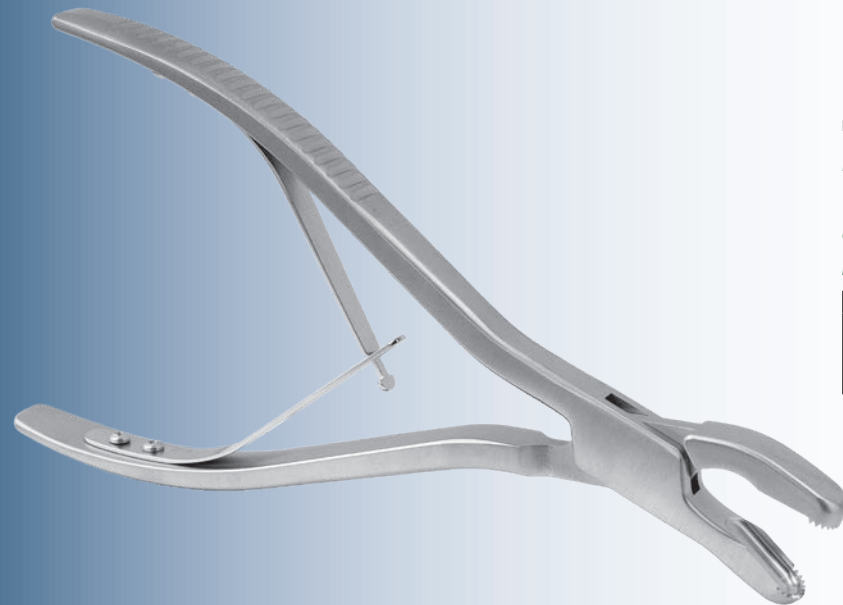
Hannum Modified Angled Grasper

Designed by Scott Hannum, MD

Heavy duty large bone grasper designed to help trim acetabular osteophytes — angled to ergonomically fit around the rim via the direct anterior approach

PRODUCT NO:

1775-04
Overall Length: 8.5" (21,6 cm)
Jaw Width: 11 mm
Jaw Bite Internal: 9 mm x 21 mm



Mazzara Pistol Grip Extra Long Rongeur

Designed by James T. Mazzara, MD

Pistol Grip handle lessens hand fatigue and slippage, and allows for better visualization

PRODUCT NO:

1768-02
Jaw Bite: 8 x 16 mm
Overall Length: 12.5" (31,8 cm)
Shaft-to-End Length: 6" (15,2 cm)





Shark Tooth Graspers

Designed by Luis Ulloa

Sharp teeth help grasp onto tissue and bone

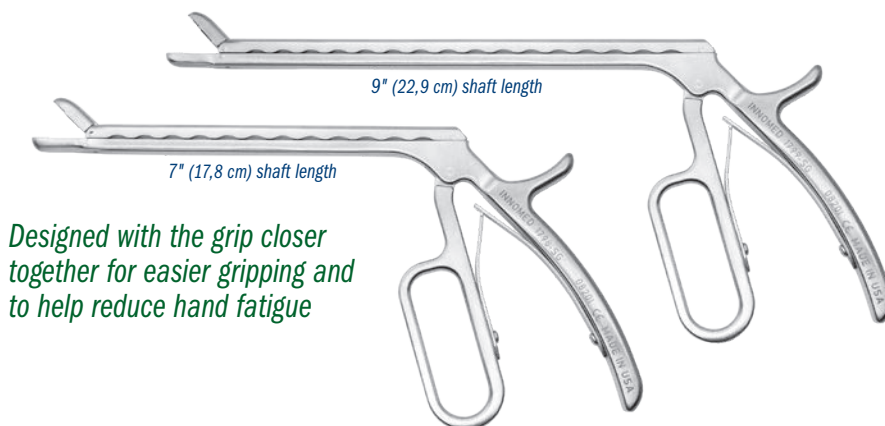
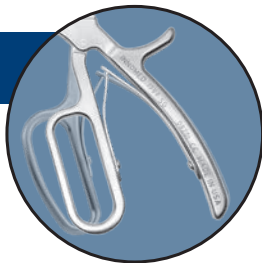
Helpful in removing the labrum, and osteophytes around the acetabulum and around the glenoid. Also helps to remove meniscus, osteophytes and loose bodies. Helps facilitate working through a small incision without disrupting vision.

Small Grip Handle

PRODUCT NO'S:

1798-SG [7" Small Grip]
Jaw Size: 6 mm x 10 mm
Overall Length: 10" (25,4 cm)
Shaft Length: 7" (17,8 cm)

1799-SG [9" Small Grip]
Jaw Size: 6 mm x 10 mm
Overall Length: 12" (30,5 cm)
Shaft Length: 9" (22,9 cm)



Designed with the grip closer together for easier gripping and to help reduce hand fatigue

Standard Handle

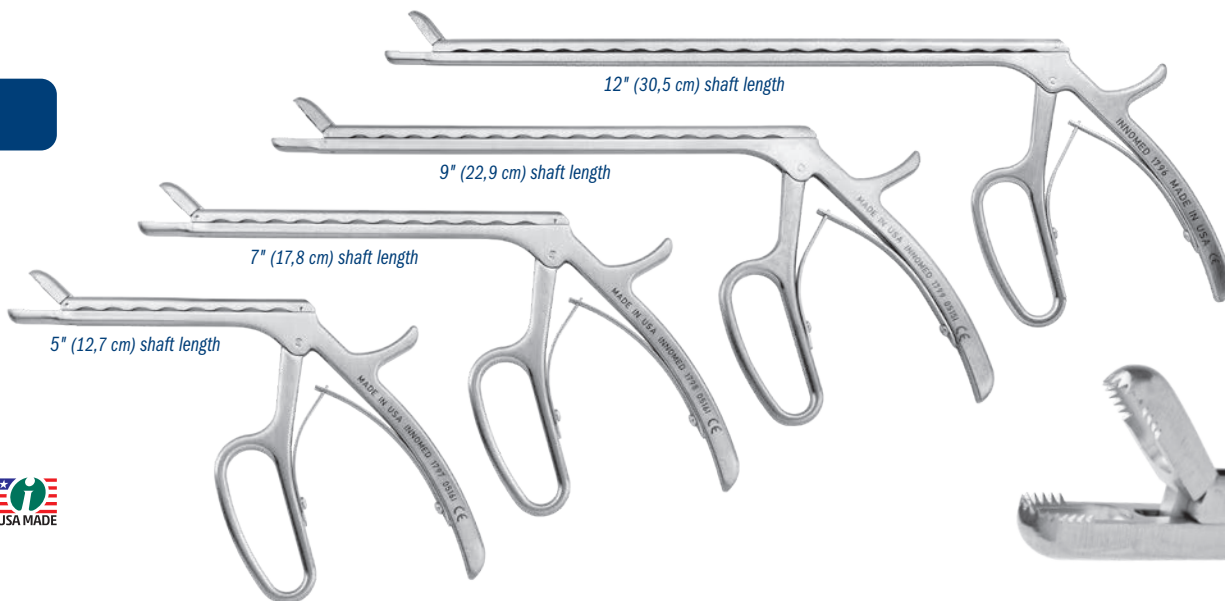
PRODUCT NO'S:

1797 [5" Standard]
Jaw Size: 6 mm x 10 mm
Overall Length: 8" (20,3 cm)
Shaft Length: 5" (12,7 cm)

1798 [7" Standard]
Jaw Size: 6 mm x 10 mm
Overall Length: 10" (25,4 cm)
Shaft Length: 7" (17,8 cm)

1799 [9" Standard]
Jaw Size: 6 mm x 10 mm
Overall Length: 12" (30,5 cm)
Shaft Length: 9" (22,9 cm)

1796 [12" Standard]
Jaw Size: 6 mm x 10 mm
Overall Length: 15" (38,1 cm)
Shaft Length: 12" (30,5 cm)



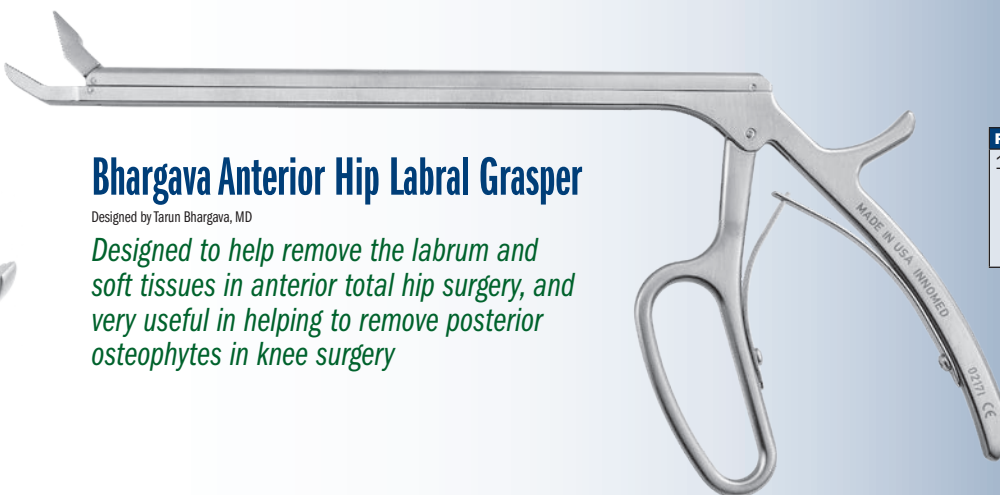
Bhargava Anterior Hip Labral Grasper

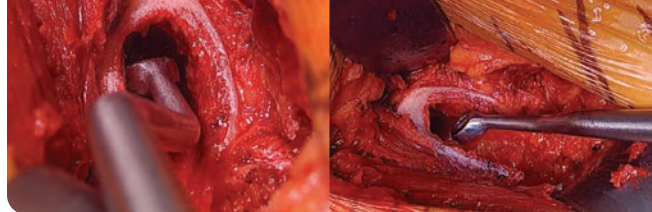
Designed by Tarun Bhargava, MD

Designed to help remove the labrum and soft tissues in anterior total hip surgery, and very useful in helping to remove posterior osteophytes in knee surgery

PRODUCT NO:

1776
Overall Length: 12.5" (31,8 cm)
Shaft Length: 9" (22,9 cm)
Shaft Width: 7 mm
Jaw Width at End: 4 mm
Toothed Jaw Length: 14 mm





Powers Double Bent Curette Set

Designed by Mark Powers, MD

The bayonet currettes help allow for proper lateralization and seating of the broach



PRODUCT NO'S:

5190-00 [Set of Three]

Also available individually:

5190-L [Angled Left]

Overall Length: 16.875" (42.9 cm)
Handle Length: 9" (22.9 cm)
Shaft Length Before Bend: 5.25" (13.3 cm)
Bend Offset: .5" (1.3 cm)
Curette Cup Angle: 33°
Curette Cup Inner Dimension: 6 mm X 8,7 mm

5190-R [Angled Right]

Overall Length: 16.875" (42.9 cm)
Handle Length: 9" (22.9 cm)
Shaft Length Before Bend: 5.25" (13.3 cm)
Bend Offset: .5" (1.3 cm)
Curette Cup Angle: 33°
Curette Cup Inner Dimension: 6 mm X 8,7 mm

5190-S [Straight]

Overall Length: 17" (43.2 cm)
Handle Length: 9" (22.9 cm)
Shaft Length Before Bend: 5.25" (13.3 cm)
Bend Offset: .5" (1.3 cm)
Curette Cup Angle: 33°
Curette Cup Inner Dimension: 6 mm X 8,7 mm



Sarraf Toothed Currettes

Designed by Khaled Sarraf, MD

Forward, straight, and reverse bent toothed currettes designed to aid in aid in all types of joint arthroplasty surgery, especially in scraping any articular chondral islands within the acetabulum during THA preparation



PRODUCT NO'S:

5174-00 [Set]

Set Includes/ Available Separately:

5174-F [Forward]

Overall Length: 11.5" (29.2 cm)
Handle Length: 5.5" (14 cm)
Angled Down: 30°

5174-R [Reverse]

Overall Length: 11.5" (29.2 cm)
Handle Length: 5.5" (14 cm)
Angled Up: 30°

5174-S [Straight]

Overall Length: 11.5" (29.2 cm)
Handle Length: 5.5" (14 cm)



- ▶ Can also be used for the femoral canal in cemented and uncemented THA
- ▶ Valuable aid in revision arthroplasty (hip, knee, shoulder and ankle) for cement curettage
- ▶ Useful tool in hip and knee primary arthroplasty as well as shoulder, elbow and ankle arthroplasty procedures
- ▶ Ultra hard titanium nitride coating helps to extend life by increasing surface hardness, prolonging sharpness, and resisting chemicals and corrosion.



Chandran Bent Serrated Curette

Designed by Rama E. Chandran, MD

Serrated design allows for easier removal of cancellous bone in the proximal femur in total joint arthroplasty

PRODUCT NO:

5171

Overall Length: 11.75" (29.8 cm)
Handle Length: 5.5" (14 cm)
Cup Size: 7 mm X 12 mm

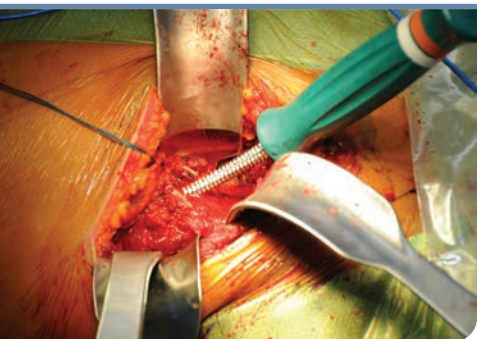


Curved Canal Rasps

Design modification by Michael Messieh, MD of original design by Anthony Unger, MD.

Designed for preparation of the femoral canal for insertion of a cemented or cementless hip stem, the multiple diameters serve to prepare the femoral canal after the initial 5 mm is used to find the curvature of the canal

PRODUCT NO'S:	
3004-01-08 [8 mm]	
Overall Length: 11" (27,9 cm) · Handle Length: 5" (12,7 cm)	
3004-01-10 [10 mm]	
Overall Length: 11" (27,9 cm) · Handle Length: 5" (12,7 cm)	
3004-01-12 [12 mm]	
Overall Length: 11" (27,9 cm) · Handle Length: 5" (12,7 cm)	

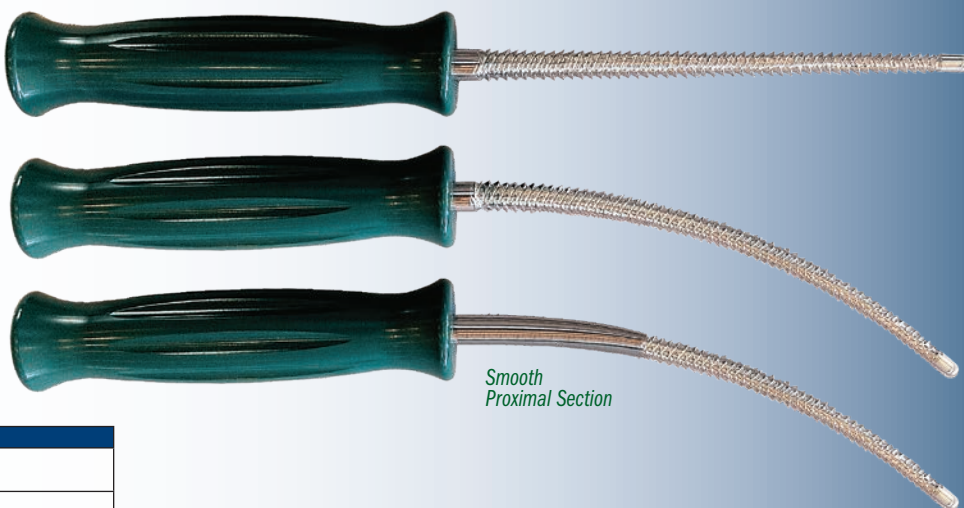


Unger Canal Finder Rasps

Designed by Anthony Unger, MD

Designed to help shape the femoral canal after reaming

PRODUCT NO'S:	
3004 [Unger Canal Finder Rasp - Straight]	
Overall Length: 11" (27,9 cm) · Handle Length: 5" (12,7 cm)	
3004-01 [Unger Canal Finder Rasp - Curved]	
Overall Length: 11" (27,9 cm) · Handle Length: 5" (12,7 cm)	
3004-02 [Unger Canal Finder Rasp - Curved with Smooth Proximal]	
Overall Length: 11" (27,9 cm) · Handle Length: 5" (12,7 cm)	



DAA Canal Finder Rasp

Designed to help begin preparation of the femoral canal prior to stem broaching – features a large handle with a striking plate end



PRODUCT NO:	
C1026	
Overall Length: 13.125" (33,4 cm)	
Handle Length: 6" (15,2 cm)	
Maximum Shaft Diameter: 13 mm	



T-Handle Femoral Canal Finders

Original design by Neal L. Rockowitz, MD

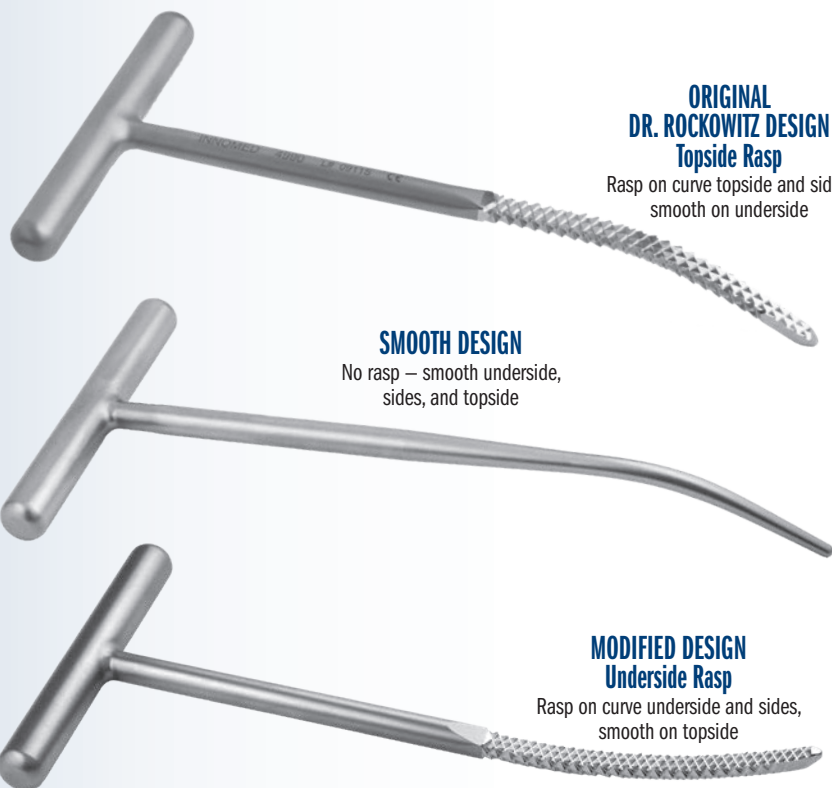
Designed to sound the femoral canal prior to stem broaching, especially useful to help start the broach path during the direct anterior approach

PRODUCT NO:

4990 [Rockowitz Topside Rasp]
Overall Length: 9" (22,9 cm)
Curved Rasp Portion: 4" (10,2 cm)

4990-03 [Smooth]
Overall Length: 9.385" (24,4 cm)

4989 [Modified Underside Rasp]
Overall Length: 9" (22,9 cm)
Curved Rasp Portion: 4" (10,2 cm)



ORIGINAL DR. ROCKOWITZ DESIGN Topside Rasp

Rasp on curve topside and sides,
smooth on underside

SMOOTH DESIGN

No rasp – smooth underside,
sides, and topside

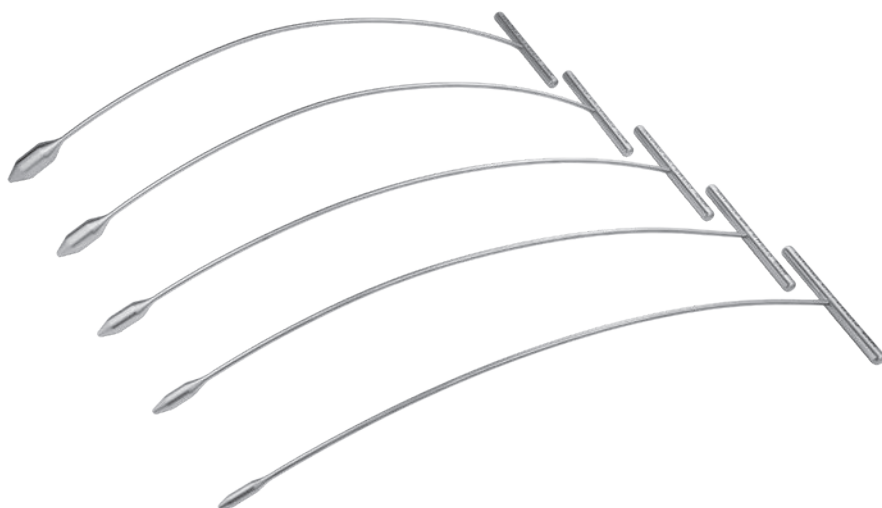
MODIFIED DESIGN Underside Rasp

Rasp on curve underside and sides,
smooth on topside

Powers Femoral Sounds

Designed by Mark Powers, MD

Allows the surgeon to gently identify the canal of a long bone as well as its width (isthmus) prior to inserting a device



Particularly useful for the anterior approach to the hip. Helps identify intraoperative occult fractures. Properly identifying the medullary canal before broaching helps minimize possible intraoperative fractures.

PRODUCT NO'S:

4189-00 [Set of 5]

Also available individually:

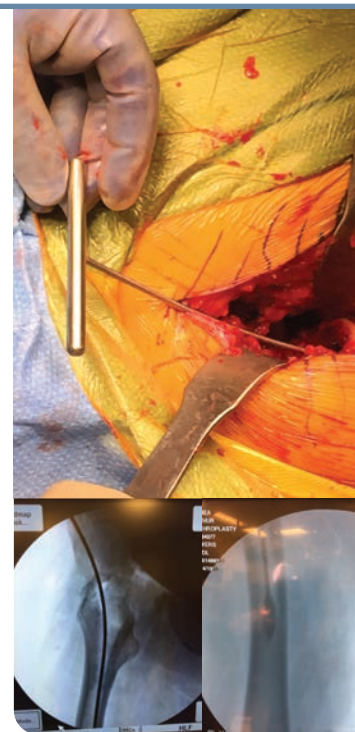
4189-06 [6 mm]
Overall Length: 14.25" (36,2 cm)
Handle Length: 3.5" (8,9 cm)

4189-08 [8 mm]
Overall Length: 14.25" (36,2 cm)
Handle Length: 3.5" (8,9 cm)

4189-10 [10 mm]
Overall Length: 14.25" (36,2 cm)
Handle Length: 3.5" (8,9 cm)

4189-12 [12 mm]
Overall Length: 14.25" (36,2 cm)
Handle Length: 3.5" (8,9 cm)

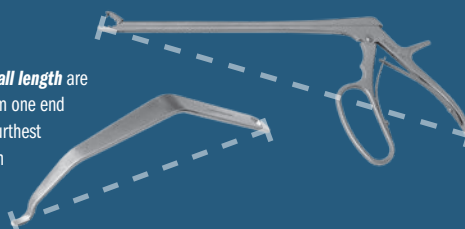
4189-14 [14 mm]
Overall Length: 14.25" (36,2 cm)
Handle Length: 3.5" (8,9 cm)



Measurements in this Catalog

All effort has been made to ensure the accuracy of the measurements listed in this catalog, however, some small differences may exist between actual and listed measurements.

Measurements of **overall length** are the linear distance from one end of the product to the furthest opposite end, as shown in these examples:



Measurements of **blade width** are the linear distance from one side of the product to the opposite side, typically at the widest point, as shown in this example:

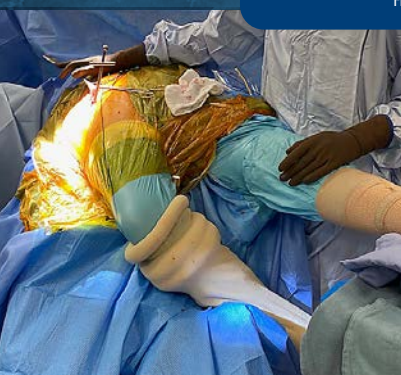


FREE TRIAL

on most instruments

Instruments are available for a no-charge two-week evaluation – includes FREE UPS Ground Shipping*

*When shipped to a hospital or medical center; additional charge applies for expedited shipping.
Free trial offer excludes implant extraction instruments, which are available as rentals. There is a pad replacement charge with the hip positioners.



- ▶ Allows one assistant to secure the leg for femoral preparation
- ▶ Attaches directly to a standard operating table
- ▶ Allows easy assessment of hip stability and leg length discrepancy
- ▶ Calibrations on the rod help to allow for precise and reproducible placement of the leg positioner according to surgeon preference



Direct Anterior Total Hip Arthroplasty Leg Positioner Assembly

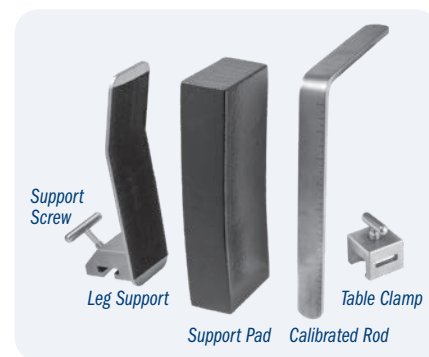
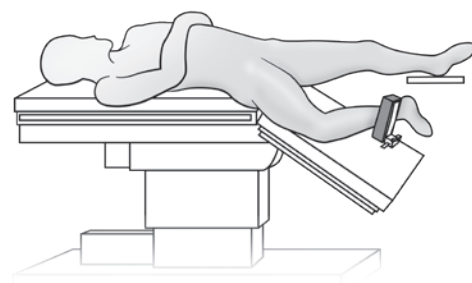
Designed by Benjamin M. Frye, MD

Designed to help position the operative leg for direct anterior approach total hip arthroplasty using a standard operating table

PRODUCT NO.'S:	
4165-00	[Assembly]
Individual/Replacement Parts:	
4165-01	[Leg Support]
Overall Length: 8.75" (22,2 cm)	
Width: 2.5" (6,4 cm)	
4165-02	[Calibrated Rod]
Dimensions: 9.625" x 7.125" x 1" (24,5 x 18,1 x 2,5 cm)	
4165-P	[Leg Support Pad]
Dimensions: 8.5" x 3" x 1.75" (21,6 x 7,6 x 4,4 cm)	
4150-PS	[Support Screw]
T-Handle Width: 1.875" (4,7 cm)	
T-Handle Depth: 1.5" (3,8 cm)	
9120	[Table Clamp]
Dimensions: 1.7" x 1.7" x 1.4" (4,3 x 4,3 x 3,6 cm)	



US Patent No. 16/523,304



INNOMED, INC
103 Estus Drive
Savannah, GA 31404

Tel 912.236.0000
Fax 912.236.7766

innomed.net
info@innomed.net

Innomed-Europe LLC
Alte Steinhauserstr. 19
CH-6330 Cham, Switzerland
Tel 0041 (0) 41 740 67 74

Innomed-Europe GmbH
Villingen-Schwenningen,
Deutschland
Tel 0049 (0) 7720 46110 60

www.innomed-europe.com
orders@innomed-europe.com

TOLL FREE 1.800.548.2362



ISO 13485:2016



INNOMED.NET

info@innomed.net