

Extra Large Hip Retractors

Designed by Wayne M. Goldstein, MD

For hip surgery with large patients, and when extra large instruments are desired for increased leverage and depth

Extra Leverage Femoral Neck Elevators

PRODUCT NO'S:

7650 [Standard]
Overall Length: 18.25"
Handle Length: 9.25"
Blade Width: 38mm

7650-02 [Short Handle]
Overall Length: 15.25"
Handle Length: 6.25"
Blade Width: 38mm

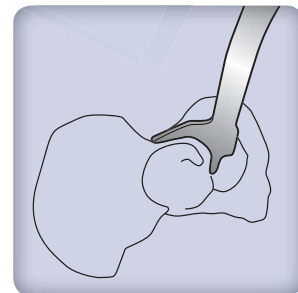


Infero-posterior Acetabular Capsule Retractors

PRODUCT NO'S:

7620-01 [Right]
Overall Length: 12"
Handle-to-Bend Length: 6"

7620-02 [Left]
Overall Length: 12"
Handle-to-Bend Length: 6"



Extra Leverage Proximal Femoral Elevator

PRODUCT NO:

7640
Overall Length: 17.5"
Handle Length: 13"
Blade Width at Widest: 63mm



Large Cobra Retractors

PRODUCT NO'S:

7630-01 [Standard]
Overall Length: 17.5"
Handle Length: 14"

7630-02 [Wide]
Overall Length: 17.5"
Handle Length: 14"



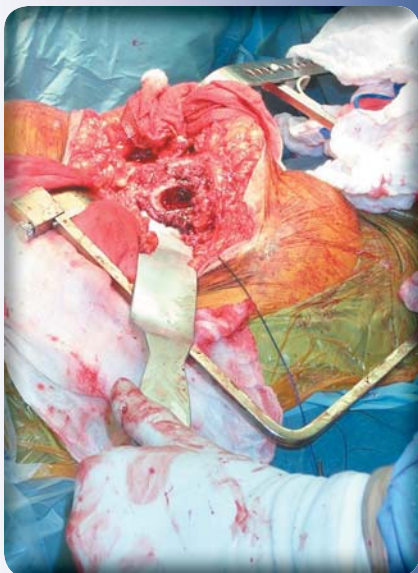
Large Soft Tissue Retractors

PRODUCT NO'S:

7670-01
Blade Depth: 3"
Blade Width: 50mm
Handle-to-Bend Length: 10.5"

7670-02
Blade Depth: 3.5"
Blade Width: 50mm
Handle-to-Bend Length: 10.5"

7670-03
Blade Depth: 4"
Blade Width: 50mm
Handle-to-Bend Length: 10.5"



Modular Weights

Weights can be used to help hold the retractors in place.

PRODUCT NO'S:

3430-01 1.5 lbs. (.68 kg)

3430-02 2.0 lbs. (.91 kg)

3430-03 2.5 lbs. (1.13 kg)
with attaching hook



FREE TRIAL ON MOST INSTRUMENTS

© 2011 Innomed, Inc.

INNOMED 



103 Estus Drive, Savannah, GA 31404
www.innomed.net info@innomed.net

912.236.0000 Phone
912.236.7766 Fax

Innomed-Europe Tel. +41 41 740 67 73
Fax +41 41 740 67 74

1.800.548.2362