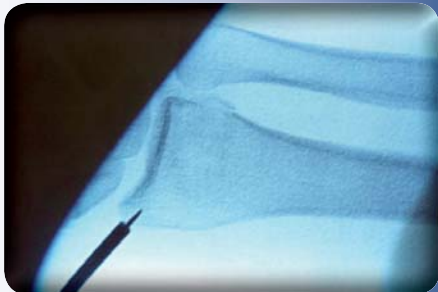
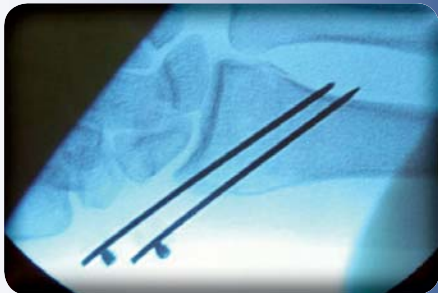


# Sanders Pin Inserters

Designed by Richard Sanders, MD

*Designed to aim and control the placement of flexible k-wires when they contact hard corticle bone, while helping to protect neurovascular structures from the spinning wire*

The ends of the guide are smooth and can be passed through skin and tissue with less danger to neurovascular structures. Narrow guides are ideal for wrist surgery such as distal radius fractures, intercarpal fusions, carpal dislocations, etc., where K-wires must be inserted from angles not accessible through the initial incision. The guides can be inserted through appropriately placed small peripheral incisions and placed on the bone with direct vision from the primary incision. The K wire is then passed through the guide, helping to protect adjacent soft tissue structures.



#### PRODUCT NO'S:

3015-081  
Accepts k-wires up to: .081" (2mm)  
Tube Length: 1.875"  
Overall Length: 4.25"  
Handle Length: 3.15"

3015-052  
Accepts k-wires up to: .052" (1.25mm)  
Tube Length: 1.875"  
Overall Length: 4.25"  
Handle Length: 3.15"

FREE TRIAL ON MOST INSTRUMENTS



103 Estus Drive, Savannah, GA 31404  
www.innomed.net info@innomed.net

912.236.0000 Phone  
912.236.7766 Fax



# INNOMED

1.800.548.2362