

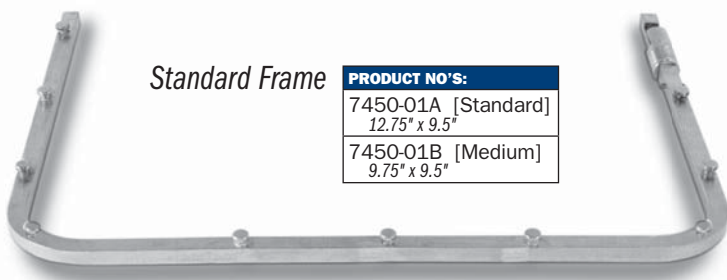


Self-Retaining Hip Surgery Retractor System

Designed by S. David Stulberg, MD

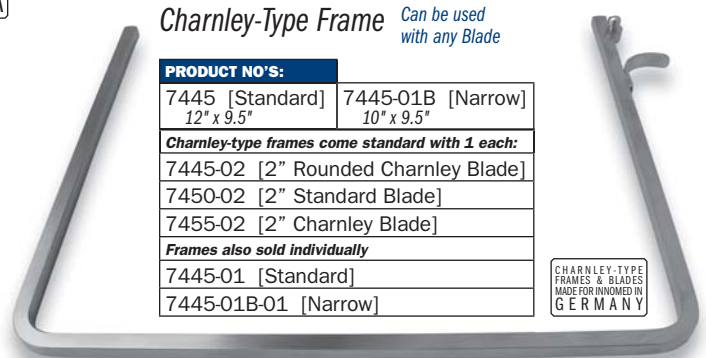
Helps to free assisting personnel while providing excellent exposure during hip arthroplasty and hip fracture surgery

MADE IN USA



Standard Frame

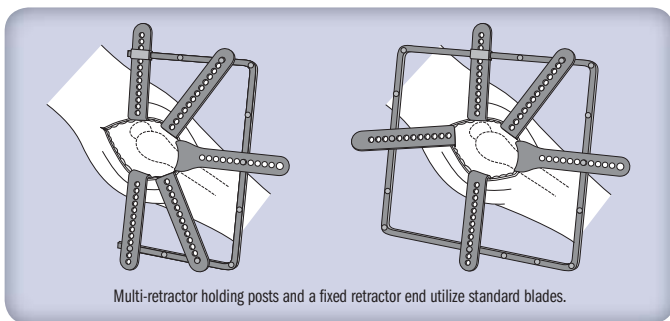
PRODUCT NO'S:	
7450-01A [Standard]	12.75" x 9.5"
7450-01B [Medium]	9.75" x 9.5"



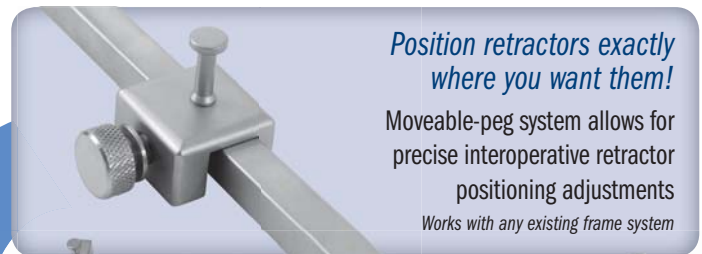
Charnley-Type Frame *Can be used with any Blade*

PRODUCT NO'S:	
7445 [Standard]	12" x 9.5"
7445-01B [Narrow]	10" x 9.5"
Charnley-type frames come standard with 1 each:	
7445-02 [2" Rounded Charnley Blade]	
7450-02 [2" Standard Blade]	
7455-02 [2" Charnley Blade]	
Frames also sold individually	
7445-01 [Standard]	
7445-01B-01 [Narrow]	

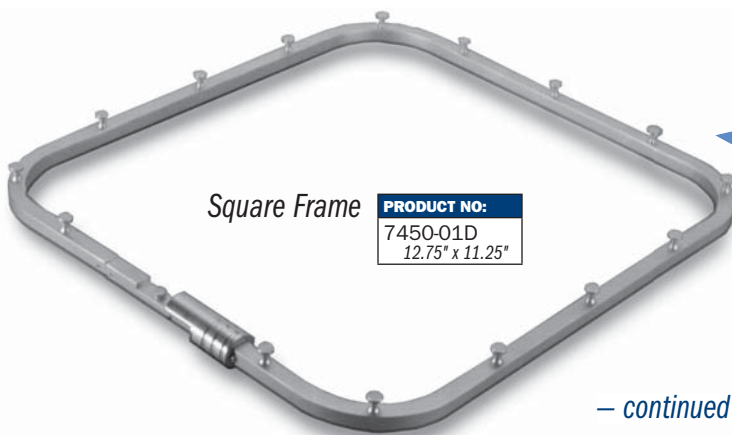
CHARNLEY-TYPE
FRAMES & BLADES
MADE FOR INNOMED IN
GERMANY



Multi-retractor holding posts and a fixed retractor end utilize standard blades.

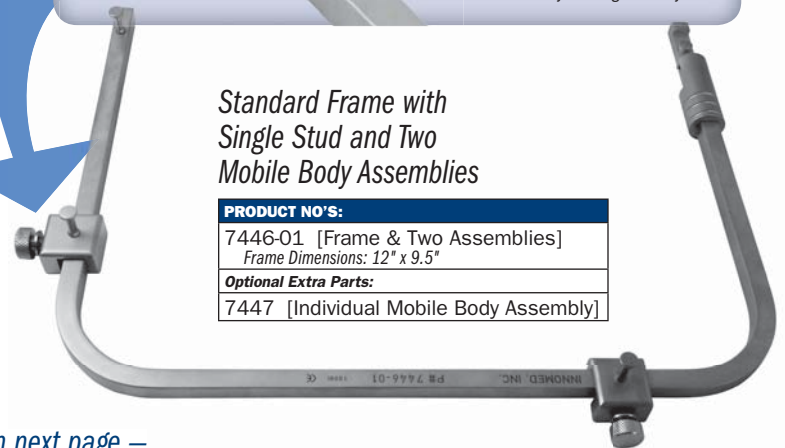


Position retractors exactly where you want them!
Moveable-peg system allows for precise interoperative retractor positioning adjustments
Works with any existing frame system



Square Frame

PRODUCT NO:	
7450-01D	12.75" x 11.25"



Standard Frame with Single Stud and Two Mobile Body Assemblies

PRODUCT NO'S:	
7446-01 [Frame & Two Assemblies]	Frame Dimensions: 12" x 9.5"
Optional Extra Parts:	
7447 [Individual Mobile Body Assembly]	

– continued on next page –

FREE TRIAL ON MOST INSTRUMENTS



103 Estus Drive, Savannah, GA 31404
www.innomed.net info@innomed.net

912.236.0000 Phone
912.236.7766 Fax

© 2012 Innomed, Inc.

Innomed-Europe Tel. +41 41 740 67 73
Fax +41 41 740 67 74



1.800.548.2362

OPTIONAL PIECES

Standard Blade

PRODUCT NO'S:

Handle Length: 6"
7450-02 2" blade depth
7450-03 3" blade depth
7450-04 4" blade depth
7450-05 5" blade depth
7450-06 6" blade depth

Long Standard Blade

PRODUCT NO'S:

Handle Length: 8"
7451-02 2" blade depth
7451-03 3" blade depth
7451-04 4" blade depth
7451-05 5" blade depth
7451-06 6" blade depth

3-Prong Rake Blade

PRODUCT NO:

7450-10A 1" blade depth

5-Prong Rake Blade

PRODUCT NO:

7450-10B 1" blade depth

Hohmann Style Blade

PRODUCT NO'S:

7450-08A [Standard] 4" blade depth
7450-08B [Deep] 6" blade depth

Bennett Style Blade

PRODUCT NO'S:

7450-07A [Standard] 4" blade depth
7450-07B [Deep] 6" blade depth

Soft Tissue Blade

PRODUCT NO'S:

7450-09A [Standard] 2" blade depth
7450-09B [Deep] 2.5" blade depth

Blades with T-Handle

T-bar handles help prevent the hand from slipping

PRODUCT NO'S:

7450-02T 2" blade depth
7450-03T 3" blade depth
7450-04T 4" blade depth
7450-05T 5" blade depth
7450-06T 6" blade depth



Extra Large Standard Blades

Designed by Andrew D. Bunta, MD

Help retract soft tissue in larger patients

PRODUCT NO'S:

7470-02 2" blade depth
7470-03 3" blade depth
7470-04 4" blade depth



Narrow Retractor Blades

PRODUCT NO'S:

7480-02 2" blade depth
7480-03 3" blade depth



Retractor Blades for Charnley-type Frame

PRODUCT NO'S:

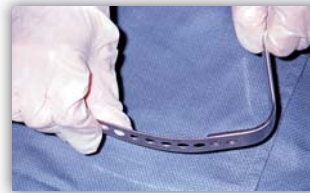
7445-02 Rounded 2" blade depth
7455-02 2" blade depth
7455-04 4" blade depth
7455-06 6" blade depth

CHARNLEY-TYPE
FRAMES & BLADES
MADE FOR INNOMED IN
GERMANY

Malleable Retractor Blades

PRODUCT NO'S:

7452-05 5" blade depth
7452-06 6" blade depth



Extra Wide Blades

Designed by Andrew D. Bunta, MD

PRODUCT NO'S:

Blade Width: 2.75"
7460-01 2.5" blade depth
7460-02 3.25" blade depth
7460-03 4.25" blade depth

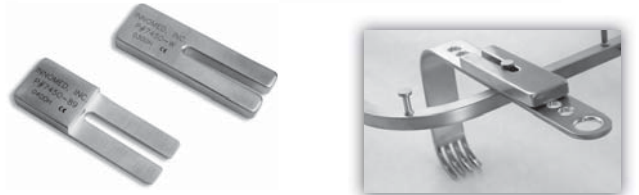


Wedges for Frames

Help stabilize retractor blades

PRODUCT NO'S:

7450-89 [Thin Wedge]
Dimensions: 3" x 1" x 8.5mm
Blade Length: 1.75"
Blade Depth: 8.5mm 4mm
7450-99 [Thick Wedge]
Dimensions: 3" x 1" x 8.5mm
Blade Length: 1.75"
Blade Depth: 8.5mm



Velcro™ Straps for Hip and Acetabular Retractors

Help hold retractors in place in conjunction with a retractor frame

PRODUCT NO:

8140 [Pkg of 10]
Strap Length: 8.75"

