

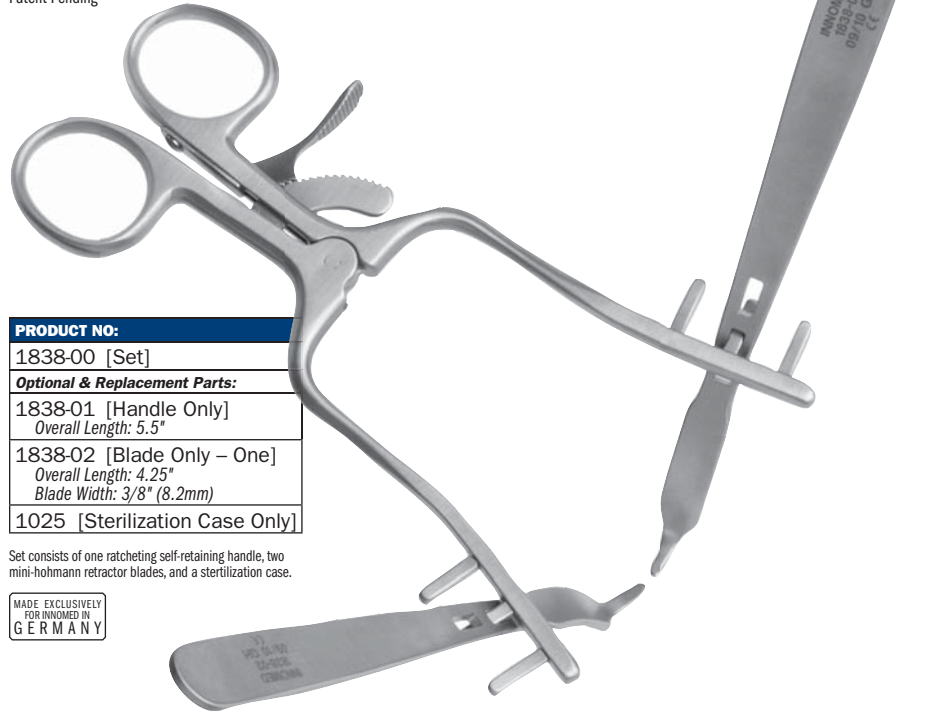
Dodson Modular Retractor

Designed by Mark A. Dodson, MD

Designed to help expose a small to medium size bone for internal fixation—can be used for distal radius, ulna, humerus, and fibula fractures

Allows the limb to be rotated (pronated or supinated) without loss of exposure. The hohmann retractors have three hole sizes which allow for a variety of positioning angle options using the teeth of the self-retaining handle, or can also be positioned in-between the teeth. The hohmann is placed around the bone, and thus reduces the force on the soft tissues while increasing exposure. Can be used in the forearm to treat radius and ulna shaft fractures, humerus fractures, as well as in the leg for fibula fractures.

Patent Pending



PRODUCT NO:

1838-00 [Set]

Optional & Replacement Parts:

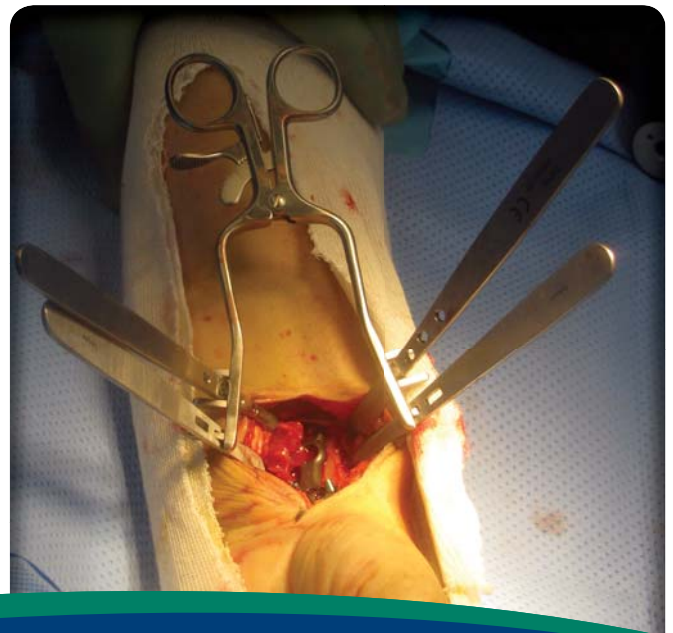
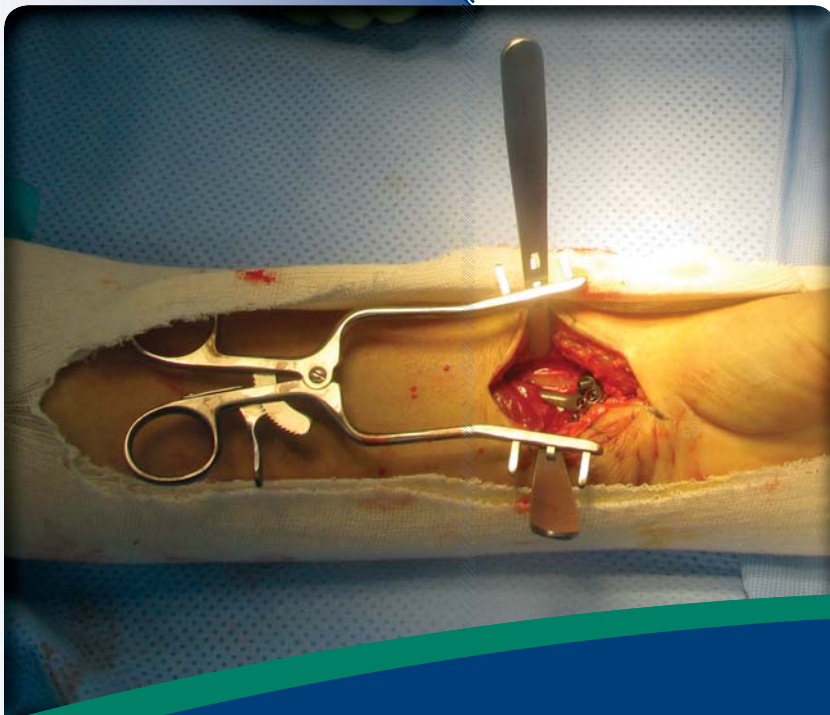
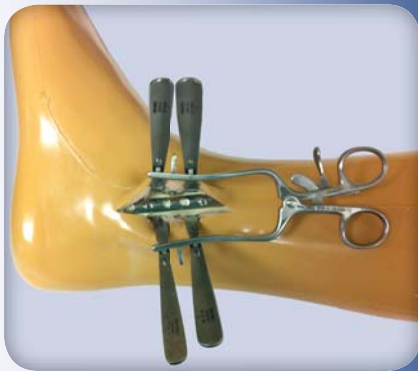
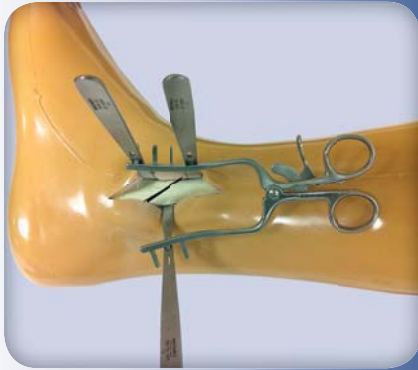
1838-01 [Handle Only]
Overall Length: 5.5"

1838-02 [Blade Only – One]
Overall Length: 4.25"
Blade Width: 3/8" (8.2mm)

1025 [Sterilization Case Only]

Set consists of one ratcheting self-retaining handle, two mini-hohmann retractor blades, and a sterilization case.

MADE EXCLUSIVELY
FOR INNOMED IN
GERMANY



FREE TRIAL ON MOST INSTRUMENTS



103 Estus Drive, Savannah, GA 31404
www.innomed.net info@innomed.net

912.236.0000 Phone
912.236.7766 Fax

© 2012 Innomed, Inc.

Innomed-Europe Tel. +41 41 740 67 74
Fax +41 41 740 67 71

INNOMED

1.800.548.2362