



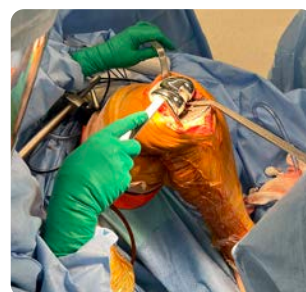
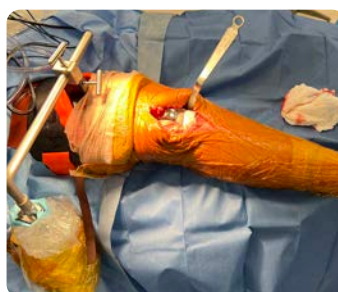
PRODUCT NO'S:	
4167-00	[Positioner Set]
Set Includes:	
4167-01	[Cradle]
Dimensions: 7.5" x 7.75" (19,1 x 19,7 cm)	
4167-02	[Rod]
Width: 13.6" (34,5 cm)	
Height: 20.6" (52,3 cm)	
4150-PS	[Post Screw]
Two included in set, one with this product number	
2760-P	[Silicone Pad]
Dimensions: 9" x 8" x 1/2" thick (22,9 x 20,3 x 1,3 cm)	
[Orange Strap]	
Dimensions: 2" x 31.5" (5,1 x 80 cm)	
Two included in set, see below for replacement 10-pack	
[Short Black Straps]	
Dimensions (Each): 2" x 24" (5,1 x 61 cm)	
Two included in set, see below for replacement 10-pack	



PRODUCT NO'S:	
Replacement Parts:	
2760-P	[Silicone Pad]
Dimensions: 9" x 8" x 1/2" thick (22,9 x 20,3 x 1,3 cm)	
8129-P	[Short Black Straps] 10-Pack
Dimensions (Each): 2" x 24" (5,1 x 61 cm)	
8130-P	[Orange Straps] 10-Pack
Dimensions (Each): 2" x 31.5" (5,1 x 80 cm)	



PRODUCT NO'S:	
Optional Parts:	
4167-03	[Adapter]
Width: 12.4" (31,5 cm)	
Height: 4.875" (12,4 cm)	
9125	[Rotating Table Clamp]



Chandran Thigh Lift Positioner

Designed by Rama Chandran, MD

Designed to help lift and position the thigh from above during knee surgery



The optional thigh lift adapter is designed for use with a hydraulic lift device instead of the manual lift rod with table clamp.

www.innomed.net



INNOMED

ISO 13485:2016

FREE TRIAL ON MOST INSTRUMENTS



103 Estus Drive, Savannah, GA 31404
info@innomed.net

912.236.0000 Phone
912.236.7766 Fax

Innomed-Europe Tel. +41 41 740 67 74
info@innomed-europe.com

1.800.548.2362

© 2024 Innomed, Inc.