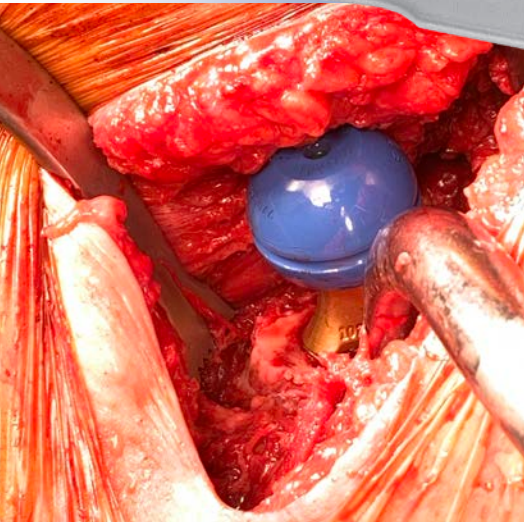


# Chandran Femoral Neck Retractor with Sharp Teeth

Designed by Rama Chandran, MD

*Designed to grasp and expose the femoral neck, the teeth help prevent the retractor from slipping or shifting under downward pressure*



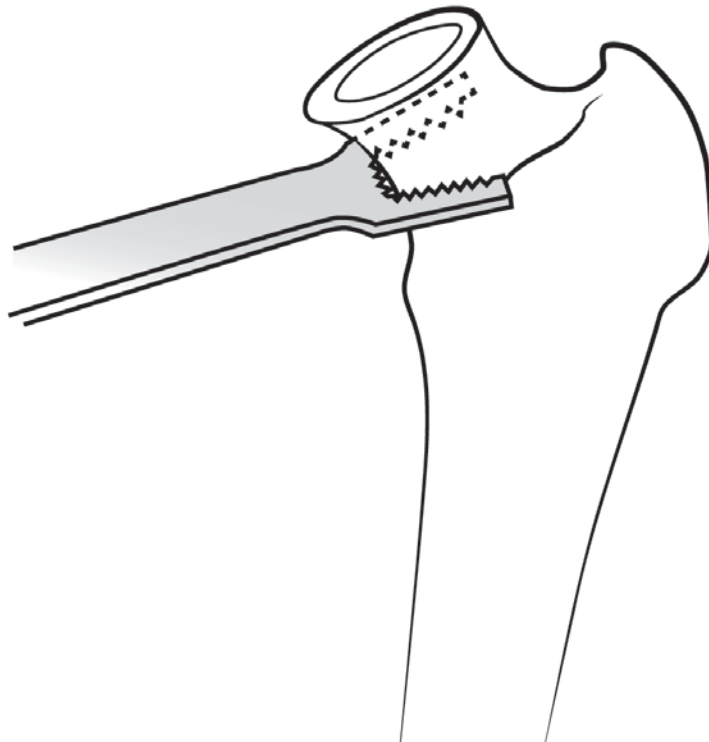
**PRODUCT NO:**

**6141**

Overall Length: 14.25" (36,2 cm)

Blade width at End: 1.25" (3,2 cm)

Prong Length: 1" (2,54 cm)



ISO 13485:2016

**FREE TRIAL ON MOST INSTRUMENTS**

[www.innomed.net](http://www.innomed.net)



103 Estus Drive, Savannah, GA 31404  
info@innomed.net

912.236.0000 Phone  
912.236.7766 Fax

Innomed-Europe Tel. +41 41 740 67 74  
info@innomed-europe.com

**1.800.548.2362**

# INNOMED