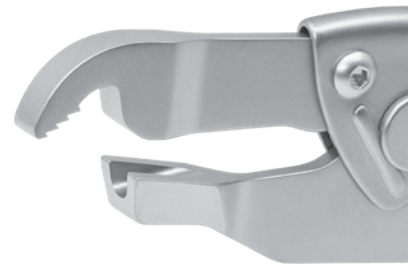


Broach Extraction OrthoVise™

Designed by Joel Matta, MD

Designed for hip broach extraction when the broach post is broken or there is a failure of the broach handle



PRODUCT NO'S:

3976-00 [Broach Extraction OrthoVise Set with Small Slaphammer]

Set includes / Available individually:

3976-01 [Broach Extraction OrthoVise Only]
Overall Length: 9" (22,9 cm)

3955 [Slap Hammer for Small OrthoVise]
Overall Length: 8.75" (22,2 cm)

3985-03 [Threaded Adapting Screw-Small]



Slap Hammer for Small OrthoVise

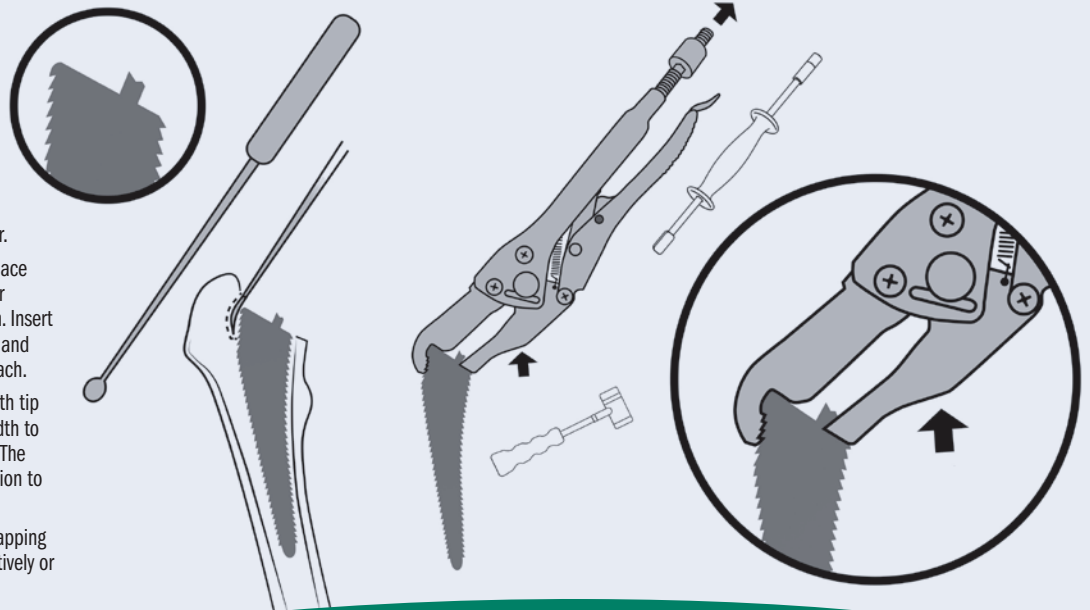


Threaded Adapter-Small



Steps for use.

1. Apply vise grip to another broach of similar size to see how a secure fit is obtained.
2. Remove bone lateral to the super-lateral shoulder of the broach with a 1/4" curved osteotome, curette or powered burr. This will be cancellous bone from the medial greater trochanter.
3. Attempt to slide toothed lateral vise grip jaw into place to grip super-lateral broach surface. Remove further cancellous bone as necessary to allow full insertion. Insert lateral jaw to depth where jaw teeth are not visible and the jaw is ideally within 1 mm of the top of the broach.
4. Apply slotted medial vise grip jaw to broken post with tip of jaw flush with broach top. Adjust vise grip jaw width to fit, then close and lock handles against resistance. The vise grip should feel secure and not wobble in relation to the broach.
5. Remove broach by gripping vise grip handles and tapping with hammer on prominence of medial jaw. Alternatively or also apply extraction force with slap hammer.



ISO 13485:2016

FREE TRIAL ON MOST INSTRUMENTS

INNOMED



103 Estus Drive, Savannah, GA 31404
www.innomed.net info@innomed.net

912.236.0000 Phone
912.236.7766 Fax

Innomed-Europe Tel. +41 41 740 67 74
Fax +41 41 740 67 71

1.800.548.2362

© 2022 Innomed, Inc.