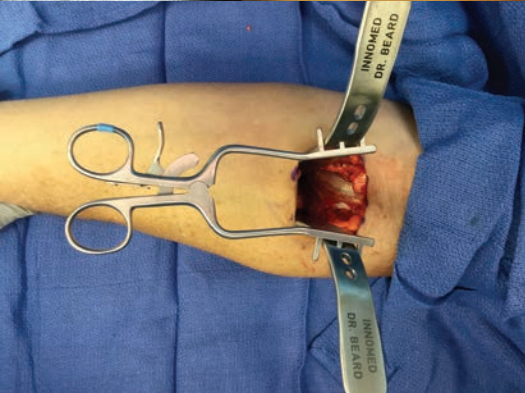
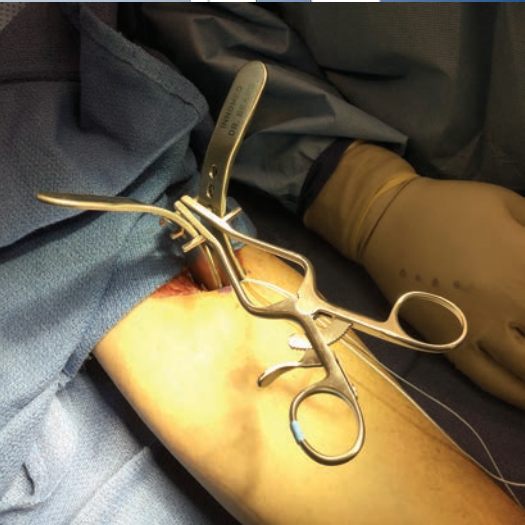


Beard Distal Bicep Retractor

Designed by David Beard, MD

Designed to help optimize surgical exposure during anterior single incision distal biceps tendon reinsertion

The blade design features an anatomically contoured distal end to hug the radius cortex. The smooth distal end helps to avoid deep penetration, and the width matches the width of the distal biceps tendon insertion site. The narrow curved handle design helps to optimize workspace and visualization.



Sold as a set, or available individually for replacement.

PRODUCT NO'S:	
5834-00	[Set – Retractor & Two Blades]
Available Individually:	
5834-01	[Blade] 1 blade with this product number
	Overall Length: 6.375" (16,2 cm)
	Width: .625" (16 mm)
5834-02	[Self-retaining Retractor]
	Overall Length: 7.5" (19,1 cm)



ISO 9001:2008 • ISO 13485:2003

FREE TRIAL ON MOST INSTRUMENTS

Scan to
Launch Our
Website



INNOMED



103 Estus Drive, Savannah, GA 31404
www.innomed.net info@innomed.net

912.236.0000 Phone
912.236.7766 Fax

Innomed-Europe Tel. +41 41 740 67 74
Fax +41 41 740 67 71

1.800.548.2362

© 2017 Innomed, Inc.