

PRODUCT NO.'S:	
2022-00	[Complete System with Case]
System Includes:	
2022-01	[Screw Removal Pliers] Overall Length: 8" (20,3 cm)
2022-02	[Mini Lexer Gouge - 4 mm] Overall Length: 7" (17,8 cm) Gouge Width: 4 mm
2022-03	[Mini Lexer Gouge - 6 mm] Overall Length: 7" (17,8 cm) Gouge Width: 6 mm
2022-04	[Mini Lexer Gouge - 10 mm] Overall Length: 7" (17,8 cm) Gouge Width: 10 mm
2022-05	[Extraction Screw for 1.5/2.0 mm Screw] Overall Length: 1.6" (4 cm)
2022-06	[Extraction Screw for 2.7/3.5/4.0 mm Screw] Overall Length: 1.6" (4 cm)
2022-07	[Extraction Screw for 4.5/5.0/6.5/7.0 mm Screw] Overall Length: 1.6" (4 cm)
2022-CASE	[Case for System]
2022-IP	[Instruction Plate] Dimensions: 7.875" x 3.65" (20 x 9,3 cm)
2022-SH	[Sharp Hook] Overall Length: 6.1" (15,5 cm)
2022-T	[T-Handle with AO-End] Overall Length: 5.9" (15 cm) Handle Width: 3.15" (8 cm)
2023-01	[Extraction Bolt for 1.5 mm Screw] Overall Length: 2.35" (6 cm)
2023-02	[Extraction Bolt for 2.0 mm Screw] Overall Length: 2.35" (6 cm)
2023-03	[Extraction Bolt for 2.7 mm Screw] Overall Length: 2.35" (6 cm)
2023-04	[Extraction Bolt for 3.5/4.0 mm Screw] Overall Length: 2.35" (6 cm)
2023-05	[Extraction Bolt for 4.5 mm Screw] Overall Length: 3.15" (8 cm)
2023-06	[Extraction Bolt for 5.0/6.5/7.0 mm Screw] Overall Length: 3.94" (10 cm)
2023-07	[Trepine for 1.5 mm Screw] Overall Length: 4.125" (10,5 cm)
2023-08	[Trepine for 2.0 mm Screw] Overall Length: 4.125" (10,5 cm)
2023-09	[Trepine for 2.7 mm Screw] Overall Length: 4.125" (10,5 cm)
2023-10	[Trepine for 3.5/4.0 mm Screw] Overall Length: 4.125" (10,5 cm)
2023-11	[Trepine for 4.5 mm Screw] Overall Length: 5.4" (13,7 cm)
2023-12	[Trepine for 5.0/6.5/7.0 mm Screw] Overall Length: 5.4" (13,7 cm)
2024-01	[Spare Trepine Cutting End for 1.5 mm Screw] Overall Length: 1.6" (4 cm)
2024-02	[Spare Trepine Cutting End for 2.0 mm Screw] Overall Length: 1.6" (4 cm)
2024-03	[Spare Trepine Cutting End for 2.7 mm Screw] Overall Length: 1.6" (4 cm)
2024-04	[Spare Trepine Cutting End for 3.5/4.0 mm Screw] Overall Length: 1.6" (4 cm)
2024-05	[Spare Trepine Cutting End for 4.5 mm Screw] Overall Length: 2.75" (7 cm)
2024-06	[Spare Trepine Cutting End for 5.0/6.5/7.0 mm Screw] Overall Length: 2.75" (7 cm)

Basic Screw Removal System

System designed to help remove damaged and broken screws from 1.5 to 7.0 mm

Screw Removal Pliers



#2022-01

See Reverse Side For Instructions

Sharp Hook



#2022-SH

T-Handle with AO-End



#2022-T

Mini Lexer Gouges



4 mm Gouge #2022-02



6 mm Gouge #2022-03



10 mm Gouge #2022-04

Extraction Screws



For 1.5/2.0 mm #2022-05

For 2.7/3.5/4.0 mm #2022-06

For 4.5/5.0/6.5/7.0 mm #2022-07

Extraction Bolts



For 1.5 mm Screw #2023-01

For 2.0 mm Screw #2023-02

For 2.7 mm Screw #2023-03

For 3.5/4.0 mm Screw #2023-04

For 4.5 mm Screw #2023-05

For 5.0/6.5/7.0 mm Screw #2023-06

Trepines



For 1.5 mm Screw #2023-07

For 2.0 mm Screw #2023-08

For 2.7 mm Screw #2023-09

For 3.5/4.0 mm Screw #2023-10

For 4.5 mm Screw #2023-11

For 5.0/6.5/7.0 mm Screw #2023-12

Spare Trepine Cutting Ends



For 1.5 mm Screw #2024-01

For 2.0 mm Screw #2024-02

For 2.7 mm Screw #2024-03

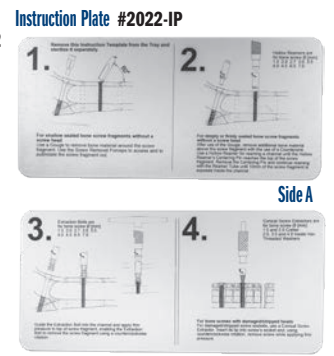
For 3.5/4.0 mm Screw #2024-04

For 4.5 mm Screw #2024-05

For 5.0/6.5/7.0 mm Screw #2024-06



Set in Case



Instruction Plate #2022-IP

Side A

Side B

MADE FOR INNOMED IN GERMANY

www.innomed.net



FREE TRIAL ON MOST INSTRUMENTS

INNOMED

ISO 13485:2016



103 Estus Drive, Savannah, GA 31404
info@innomed.net

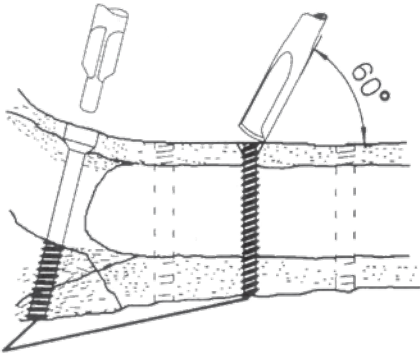
912.236.0000 Phone
912.236.7766 Fax

Innomed-Europe Tel. +41 41 740 67 74
info@innomed-europe.com

1.800.548.2362

Instructions

1.

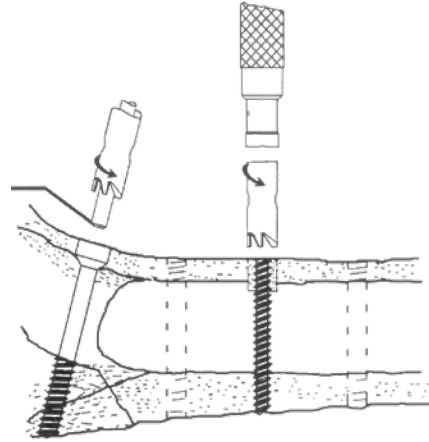


For shallow seated bone screw fragments without a screw head

Use a Gouge to remove bone material from around the screw fragment. Use the Screw Removal Pliers to access and to pull/rotate the screw fragment out.

2.

Trephines are for bone screw Ø [mm]:
1.5/2.0/2.7/3.0/3.5/4.0/4.5/6.5/7.0

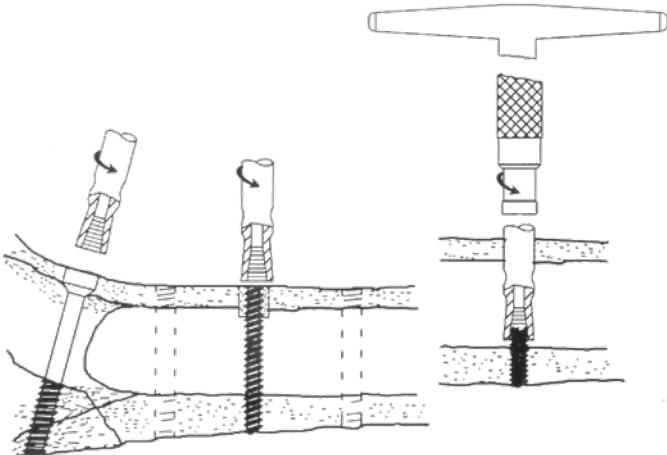


For deeply or firmly seated bone screw fragments without a screw head

After use of the Gouge, remove additional bone material above the screw fragment with the use of a countersink. Use a Trephine for reaming a channel until the Trephine's Centering Pin reaches the top of the screw fragment. Remove the Centering Pin and continue reaming with the Trephine until 10 mm of the screw fragment is exposed inside the channel.

3.

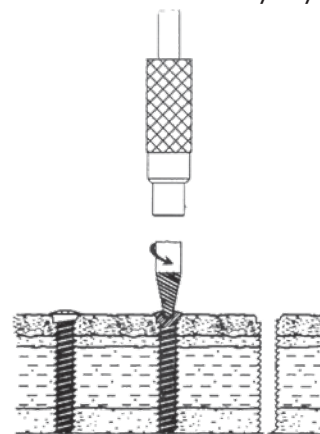
Extraction Bolts are for bone screw Ø [mm]:
1.5/2.0/2.7/3.0/3.5/4.0/4.5/6.5/7.0



Guide the Extraction Bolt into the channel and apply firm pressure to the top of the screw fragment, enabling the Extraction Bolt to remove the screw fragment using a counterclockwise rotation.

4.

Screw Extractors are for bone screw Ø [mm]:
1.5/2.0 Cortex
2.7/3.5/4.0 Inside Hex Threaded
4.5/6.5/7.0 Inside Hex Threaded



For bone screws with damaged/stripped heads

For damaged/stripped screw sockets, use a Screw Extractor. Insert its tip into the screw's socket and, using counterclockwise rotation, remove screw while applying firm pressure.